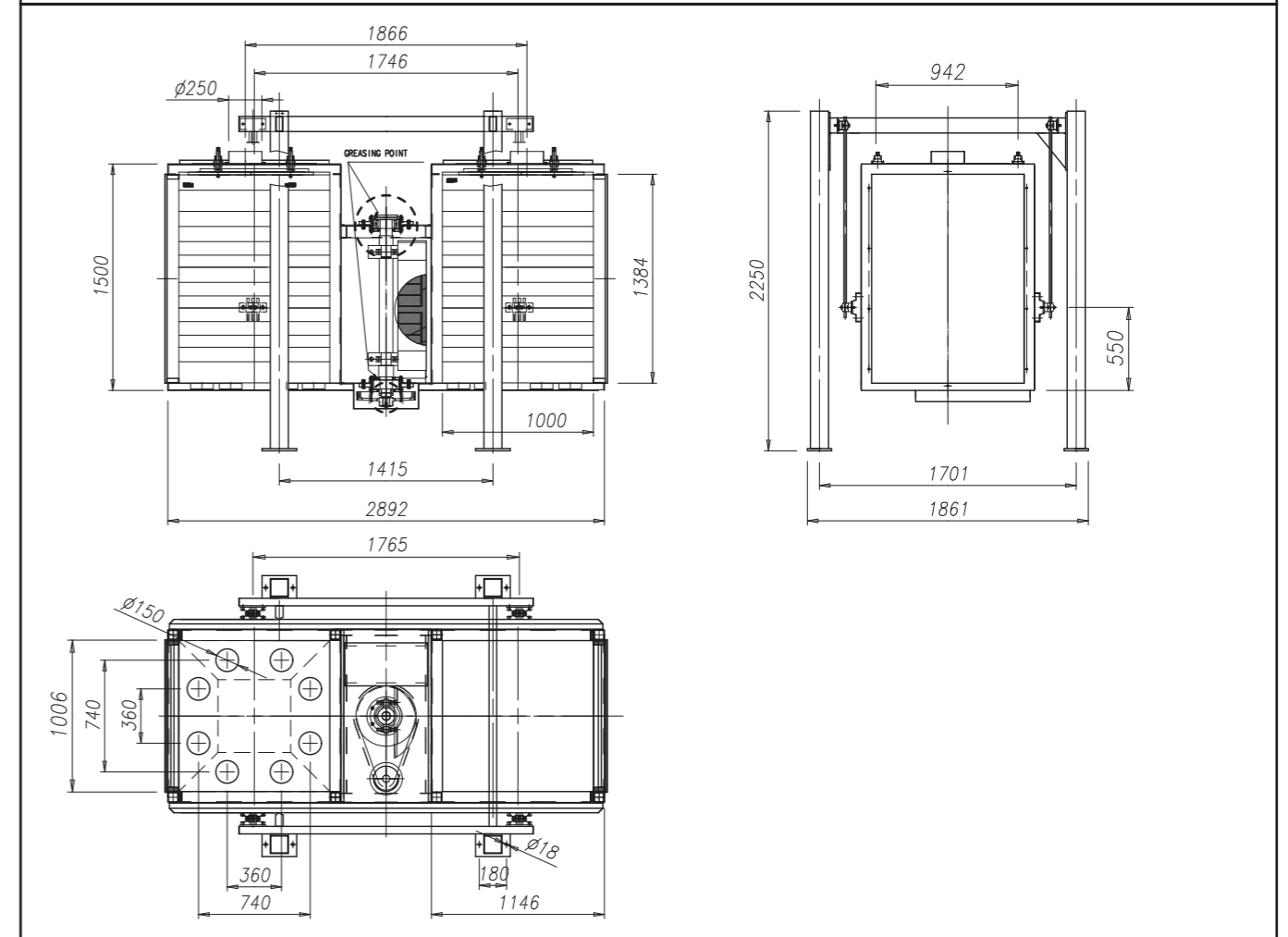
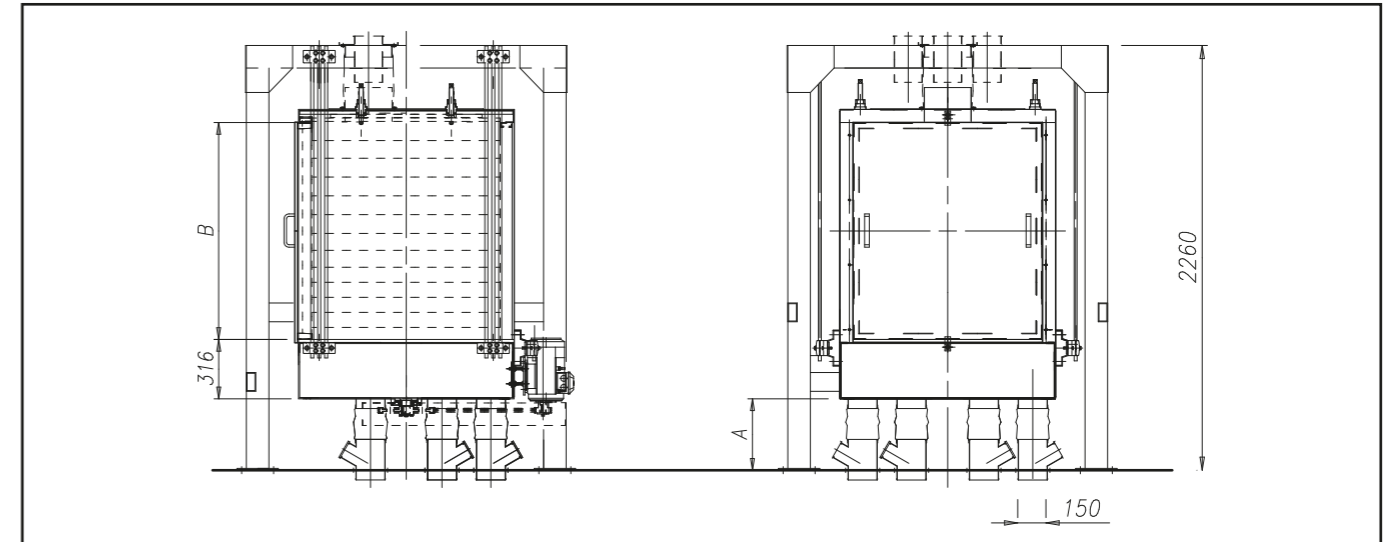
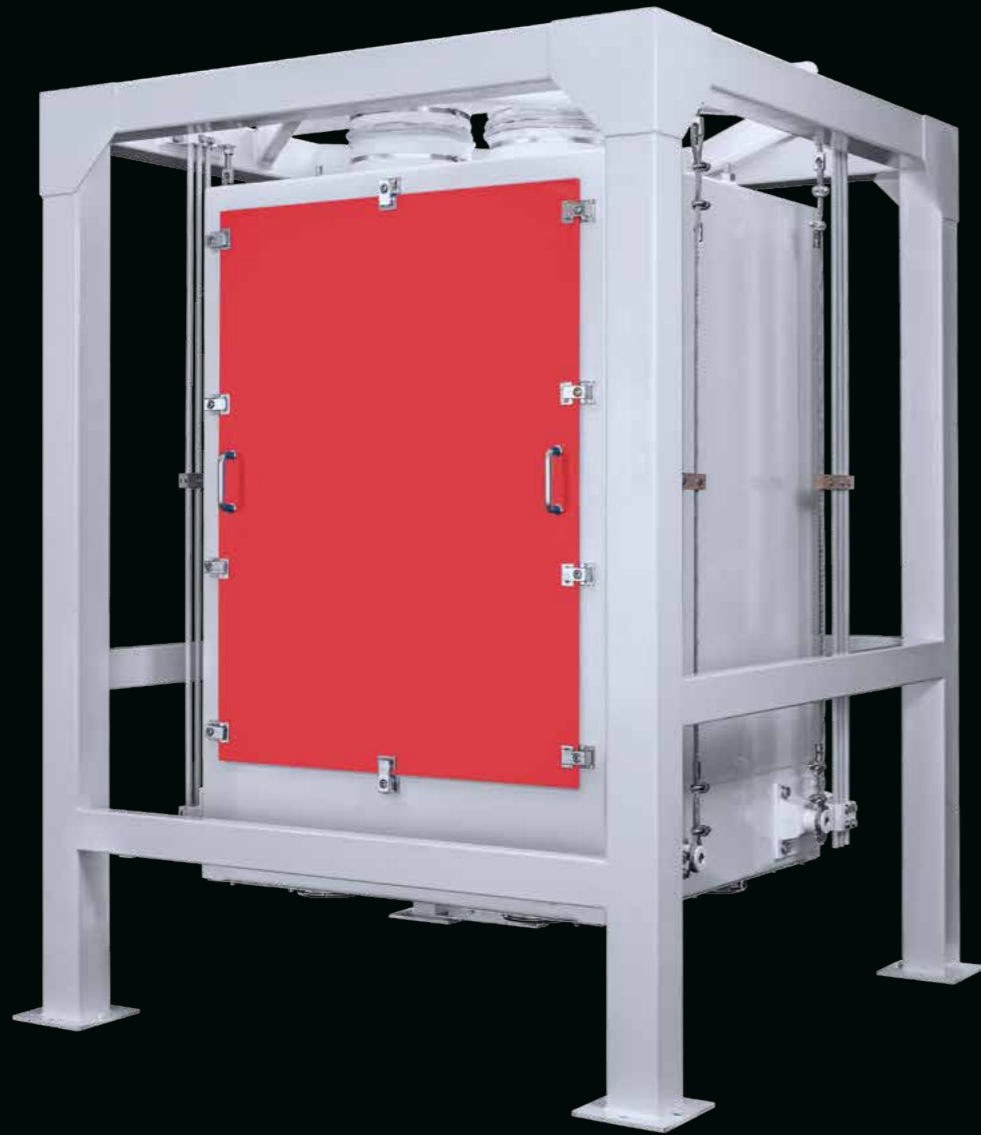


GSPM

Control Plansifter

The machine is composed by one, or two sieve boxes, with 8, 10, 12 sieves. Machine is suitable for high potential of sifting in wheat mills, feed mills, maize mills and food industry in general.

Maximum efficiency and reliability of operation contribute to solve particular problems of selection and sieving with minimum encumbrance.



Model	Sifting Area m ²	Capacity [flour] * T/h	Power kW	Weight Kg
Single channel	11	15	1,5	950
Double channel	22	30	2,2	1500

(*) For flour 250 micron with max 15.5% humidity
Units = mm