

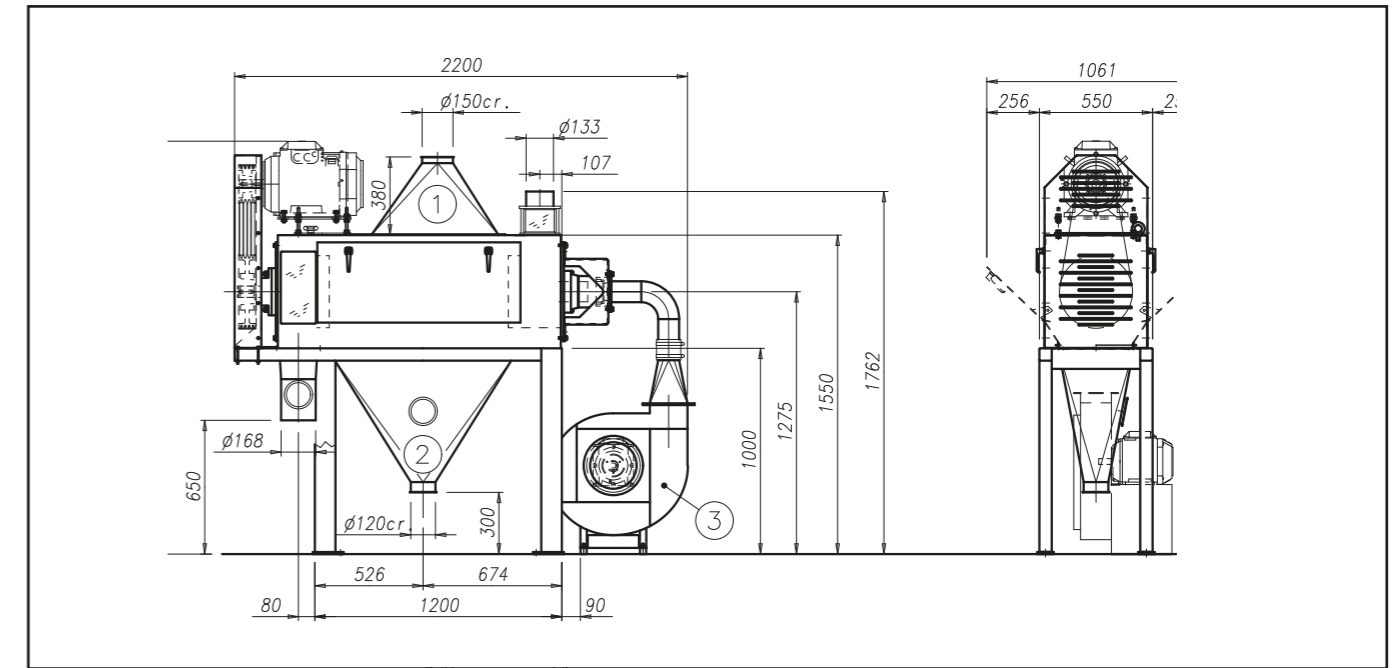
TPA

Intensive Scourer

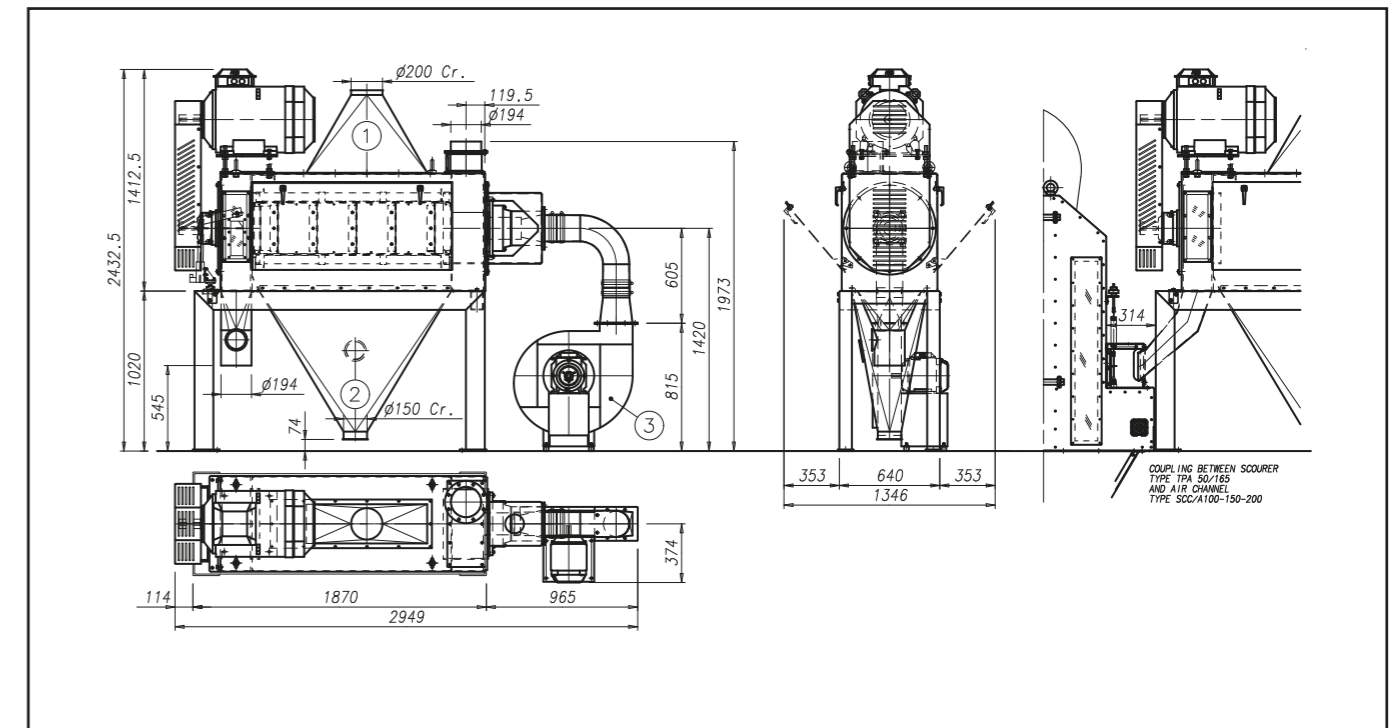
Performs an intensive cleaning of the grain kernel surface. Strong motor dynamically balanced with special rubbing beaters and paddles for product advancement. The retention time of the product inside the machine is regulated by means of an air division screen system. Built-in fan for cleaning of the rotor and the sieve



TPA 35-135



TPA 50-165



| Type | *Capacity t/h | Power Kw | Aspiration 1 m ³ /min mmH2O | | Aspiration 2 m ³ /min mmH2O | | Fan 3 m ³ /min Kw | | Weight Kg | Volume m ³ |
|------------|---------------|----------|--|----|--|----|------------------------------|----|-----------|-----------------------|
| TPA 35-135 | 8 | 15 | 10 | 50 | 15 | 50 | 3 | 25 | 660 | 3 |
| TPA 50-165 | 10 | 22 | 30 | 50 | 10 | 50 | 4 | 35 | 1200 | 5 |
| | 15 | 37 | | | | | | | | |
| | 20 | 45 | | | | | | | | |

* Soft wheat 0,75t/m³
Units = mm