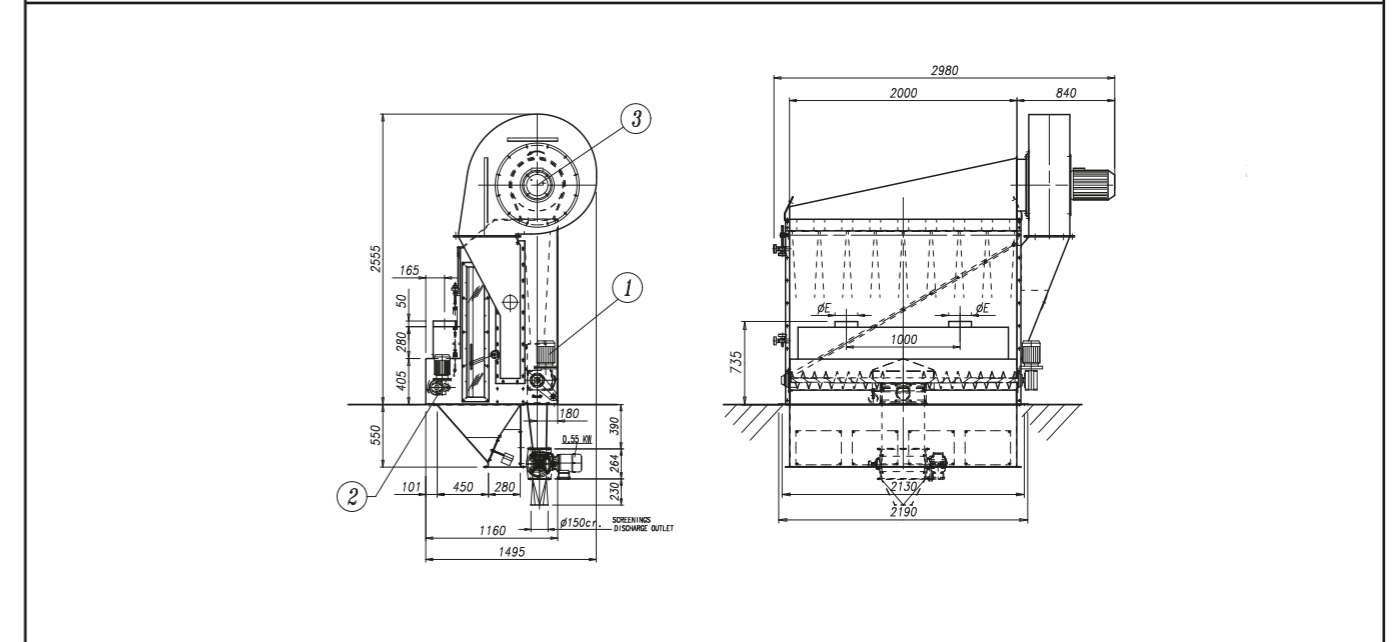
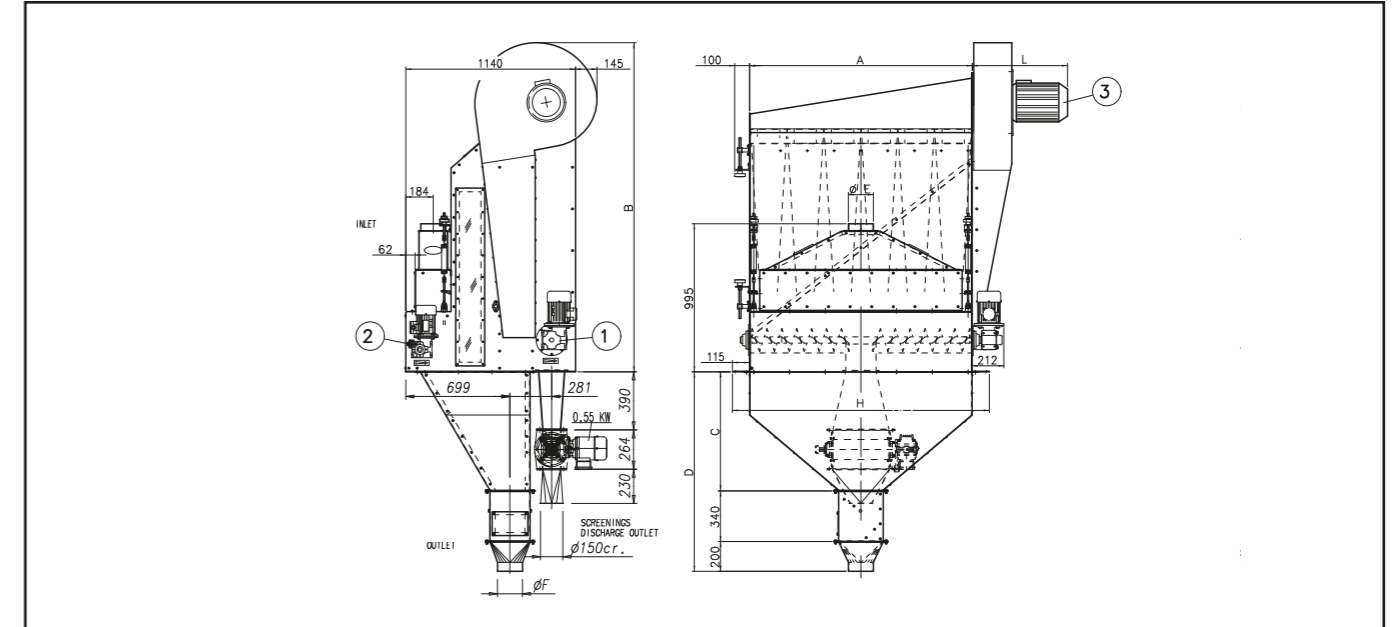


# SCC

## Closed Air Cycle Separator

The Closed Air Cycle Separator SCC is utilized in the cleaning of grains to remove light impurities from the product flow. Dust, glume, light grains, etc. are easily removed. The selection grade, set up by the operator, is executed through an air division screen by means of kinematics levers.



SCC/A	*CapacityT/h Cleaning Silos		Gear motors Kw 1 2		Motor 3 Kw	A	B	C	D	F	Weight Kg	Vol. m <sup>3</sup>
75	12	50	0,55	0,55	2,2	750	2120	600	1140	133	675	5
100	16	66	0,55	0,55	3	1000	2170	650	1340	168	900	6
150	24	100	0,55	0,55	5,5	1500	2220	800	1340	194	1200	8
										250		

SCC	*CapacityT/h Cleaning Silos		Gear motors Kw 1 2		Motor 3 Kw	Weight Kg	Vol. m <sup>3</sup>
200	32	132	0,75	0,55	Kw 5,5	1500	12

\* Soft wheat 0,75t/m<sup>3</sup>  
Units = mm