

Inside-Out Glazing Made

EMU Dual Circuit [300 - 500kg]

The Ergonomic Manipulating Unit (EMU) is an innovative machine with a unique manipulating head designed to glaze a building from the 'inside-out' when craneage or scaffolding is impractical.

With recognition from the Design Council and given the Quality in Construction Award by Construction News, the EMU has a unique manipulating head that can angle and push glass, curtain walling and unitized glazing panels outside of a building envelope, realign them and then pull them back into position for fixing.

The flexible hydraulic lifting head slews 80° left and right, tilts up and down 80° and rotates continuously 360° to manipulate loads into the ideal angle ready for fitting. The boom also slews up to 90° left and right to assist in load pick up.

Independently powered with an on-board drive system, the EMU has the mobility to access tight interior areas. Its four outriggers enhance stability and reduce the floor loading of the machine.

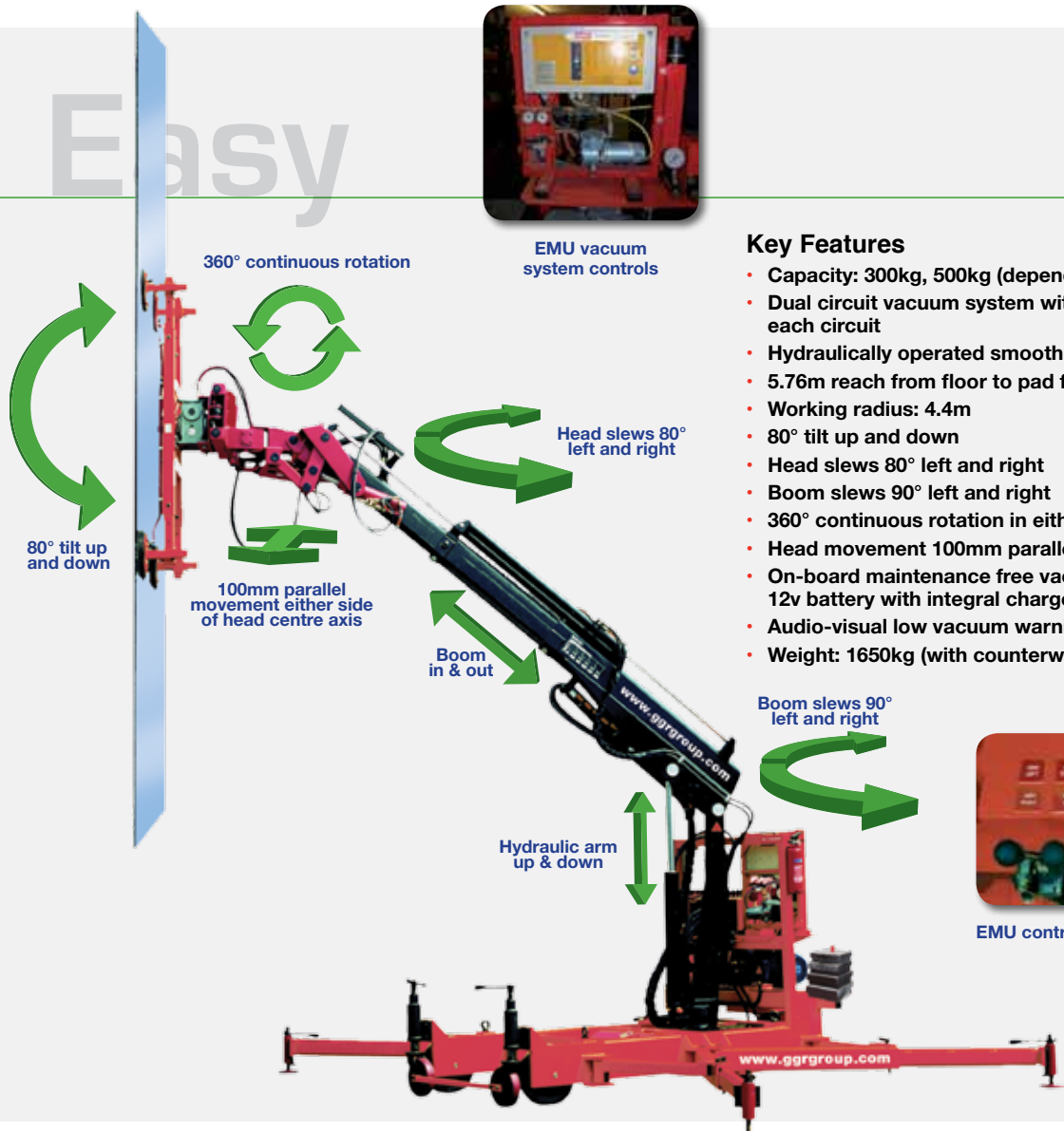
Reference Code

GRE05



Technical Specifications

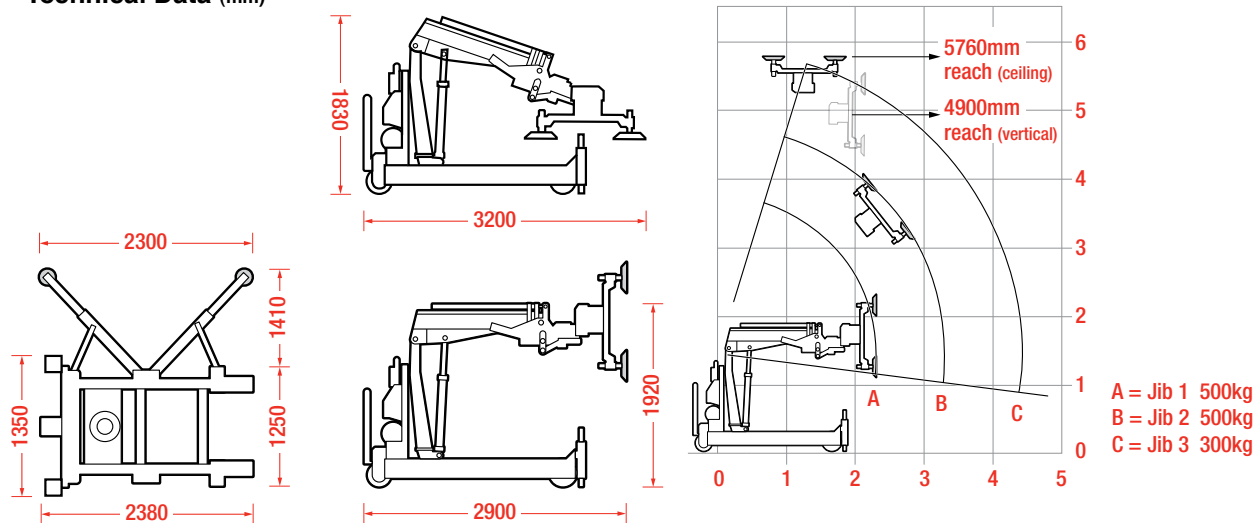
Safe working load	jibs 1 & 2: jib 3:	500kg 300kg
Suitable for lifting	material properties: surface: example:	gastight / non-porous smooth glass, plastic boards, ceramic plates, sheet metals, coated boards
Weight	with counterweights: without counterweights:	1650kg 1450kg
Width	folded:	1350mm (with counterweights), 1250mm (without)
Length	length:	3200mm
Height	folded:	1830mm
Number of suction cups	cups:	4 - 12 depending on configuration. Standard frame is 10 cups and 2 extension arms. Custom built frames are available. Curved frame option also available.
Powered head tilt	powered head tilt:	80° up & down
Powered head sideshift	movement:	100mm
Powered pad frame rotation	rotation:	360° continuous
Powered head slew	left & right:	80°
Powered boom slew	left & right:	90°
Vacuum system	dual circuit:	1 pump, 2 vacuum reserve tanks
Power requirements	options:	Manipulation of the head and arm is powered by 110v/32A site supply. An LPG-powered generator is available for situations where site supplies are not present
Optional accessories	optional:	4 section extra length hydraulic boom, increases length by 1m and reduces capacity to 200kg



Key Features

- Capacity: 300kg, 500kg (depending on chosen jib)
- Dual circuit vacuum system with vacuum gauge for each circuit
- Hydraulically operated smooth control
- 5.76m reach from floor to pad face
- Working radius: 4.4m
- 80° tilt up and down
- Head slews 80° left and right
- Boom slews 90° left and right
- 360° continuous rotation in either direction
- Head movement 100mm parallel left and right
- On-board maintenance free vacuum pump powered by 12v battery with integral charger or 110v/240v mains
- Audio-visual low vacuum warning system
- Weight: 1650kg (with counterweights)

Technical Data (mm)



Inside-Out Glazing In Tight

EMU 1000 Dual Circuit [1000kg]

The EMU 1000, with a lifting capacity of 1000kg, is specifically designed for interior and exterior use when craneage is too costly, impractical or impossible.

The unique manipulating head enables 'inside-out' glazing. It can angle and push a unit outside the envelope, realign it and then pull it back into position for fixing. In addition, the EMU's on-board drive system provides the mobility to access tight interior areas.

Key Features

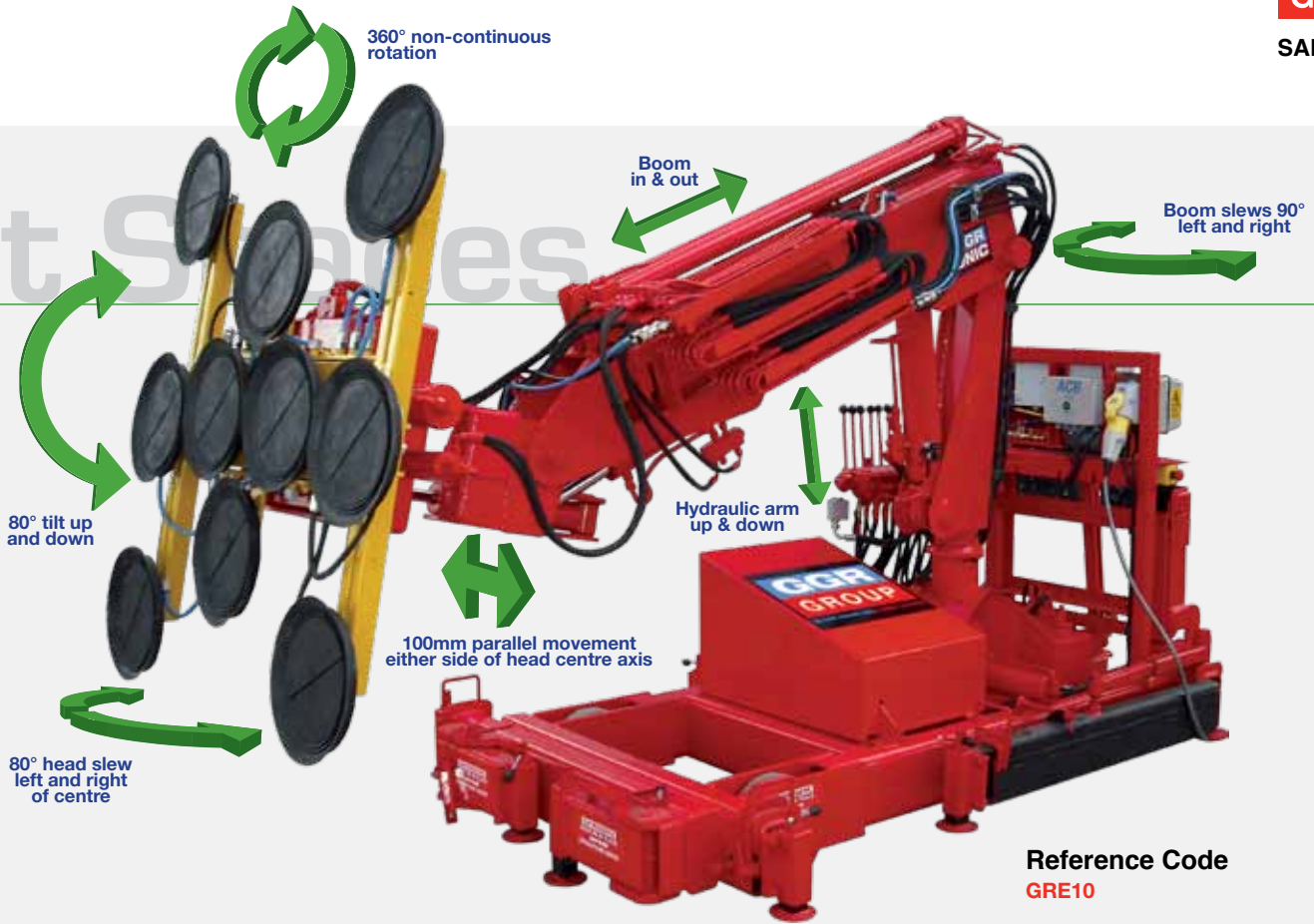
- Capacity 1000kg (with extension arms), 750kg (without arms)
- Dual circuit vacuum system with vacuum gauge, reserve tank and non-return valve for each circuit
- 5.6m reach from floor to pad face
- Working radius 4.6m
- Six outriggers provide stability and reduce floor loading
- Unique, patented head allows a unit to be manipulated with ease through:
 - 80° left and right of centre
 - 80° up and down from centre
 - 360° non-continuous rotation
 - 100mm parallel movement either side of head centre axis
- Boom slews 90° left and right
- On-board maintenance-free vacuum pump
- 12v battery with integral charger or 110v mains
- Audio-visual low vacuum warning
- Weight: 3000kg (with counterweights)



EMU 1000 with counterweights

Technical Specifications

Safe working load	jibs 1 & 2: jib 3:	1000kg (with extension arms), 750kg (without extension arms) 1000kg (with extension arms), 750kg (without extension arms)
Suitable for lifting	material properties: surface: example:	gastight / non-porous smooth glass, plastic boards, ceramic plates, sheet metals, coated boards
Weight	with counterweights: without counterweights:	3000kg 2500kg
Width	folded:	1500mm
Length	folded:	3300mm (4350mm with counterweight pack)
Height	folded:	2100mm
Number of suction cups	cups:	10 cups (750kg) - 14 cups (1000kg)
Powered head tilt	powered head tilt:	80° up & down
Powered head sideshift	movement:	100mm
Powered pad frame rotation	rotation:	360° non-continuous
Powered head slew	left & right:	80°
Powered boom slew	left & right:	90°
Vacuum system	dual circuit:	1 pump, 2 vacuum reserve tanks
Power requirements	options:	Manipulation of the head and arm is powered by 110v/32A site supply. An LPG-powered generator is available for situations where site supplies are not present



Overload warning alarm



EMU 1000 control levers



Dual vacuum gauge circuit



Counterweight pack



Technical Data (mm)

