



CPS5

Rapid/Creepspeed-Positioning Controller

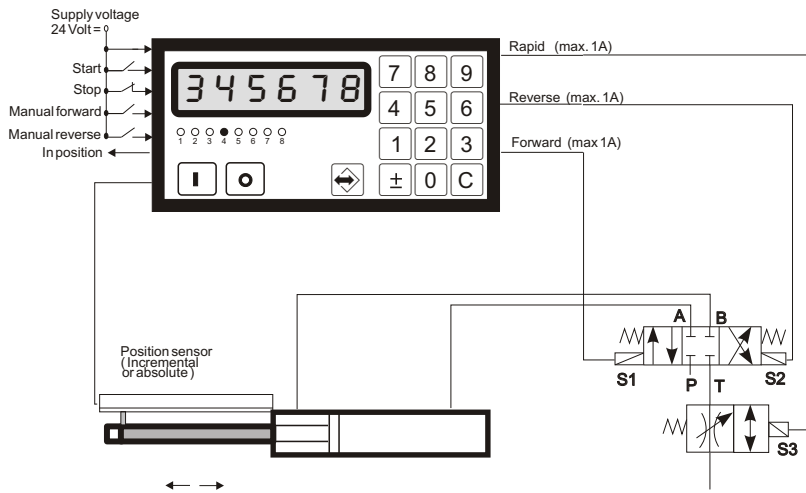
- For positioning AC motors in Posistop version or with frequency converter
- Easily adapted to various frequency converters
- Position sensing using incremental or absolute encoders
- Direct length preset (key in - start)
- Up to 8 positions may be stored
- Automatic rapid/creep cycling and brake actuation
- Highly legible LED display (6-digit, red, 14 mm high)
- Play compensation and loop travel
- Resolution programmable to display in engineering units
- Supply voltage 18 V - 32 V
- Built-in encoder supply 300 mA, 5 V or 24 V
- Compact size (144x72x112mm (WxHxD))



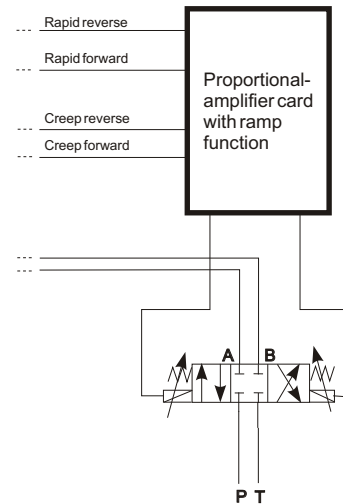
Ordering code

CPS 5.101	Use with incremental encoders
CPS 5.201	Use the absolute encoder having SSI interface
CPS 5.401	Use with magnetostrictive transducer

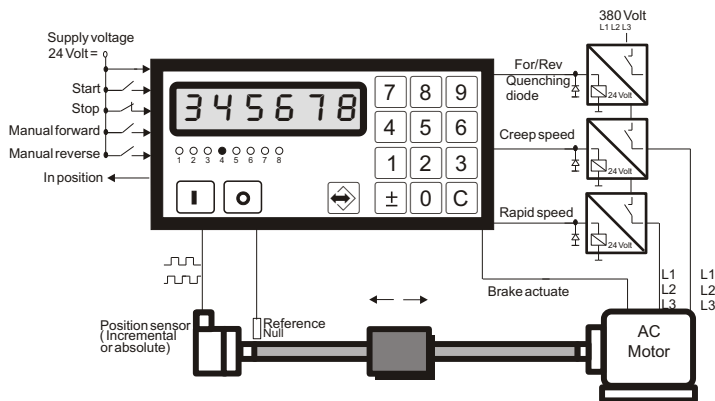
Rapid/Creep Control



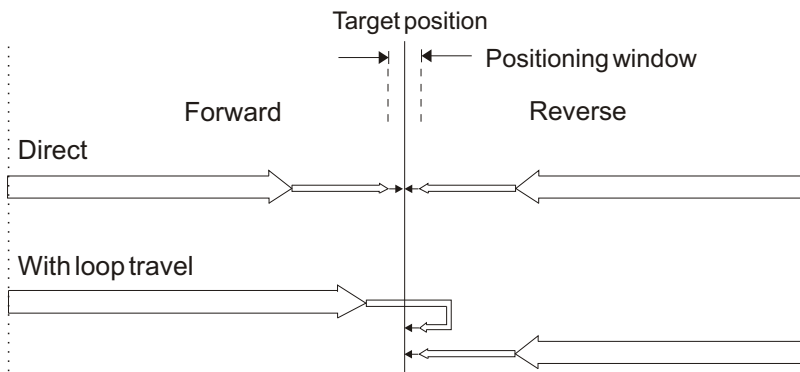
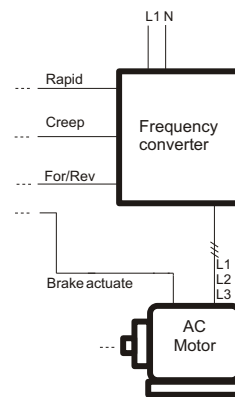
Proportional-Valve



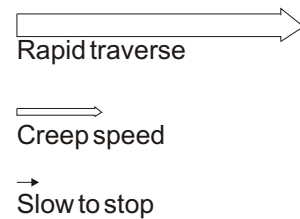
Pole Changing Motor



Motor with frequency converter



Signs and symbols:



- 8 digital inputs 24 V, for
- Manual jog
 - Start, Stop
 - Reference (Home)
 - Zero set
 - Keypad disable

- 8 digital outputs 24 V, for
- Rapid traverse forward/reverse
 - Creep speed forward/reverse
 - Actuate brake
 - Position reached
 - Fault

All data in this brochure have an informative character without warranty of characteristics. Changes without previous announcement reserved.

esitron-electronic GmbH

Ernst-Zimmermann-Str. 18
D-88045 Friedrichshafen
Internet: www.esitron.de

Tel. +49(0)7541-6000-0
Fax +49(0)7541-6000-11
E-Mail: info@esitron.de