

□42 HECM24... Line Driver



STEPPING MOTORS

2-Phase Step Motor | Flange 42mm | 0.21 - 0.93 Nm
with Encoder

SCHRITTMOTOREN

2-Phasen Schrittmotoren | Flansch 42mm | 0,21 - 0,93 Nm
mit Encoder

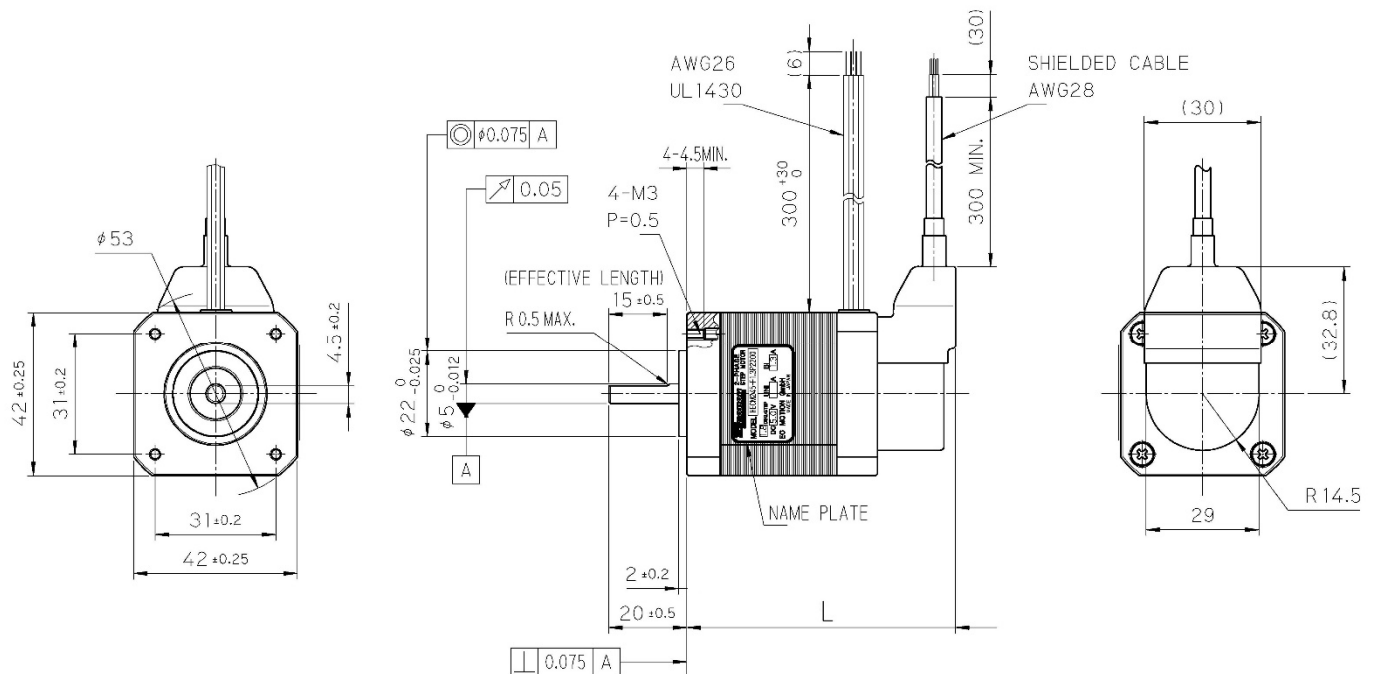


HECM24... Series

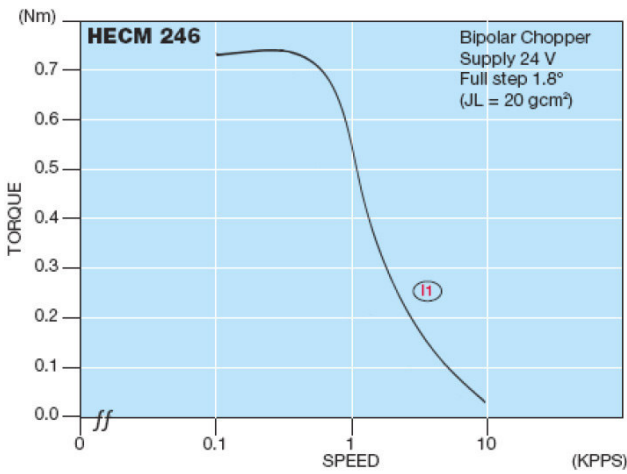
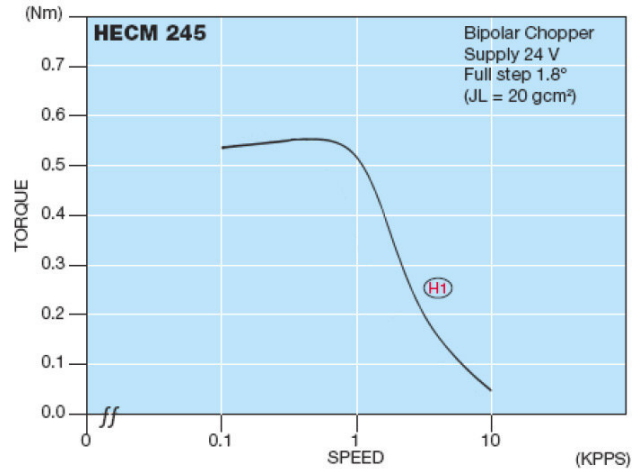
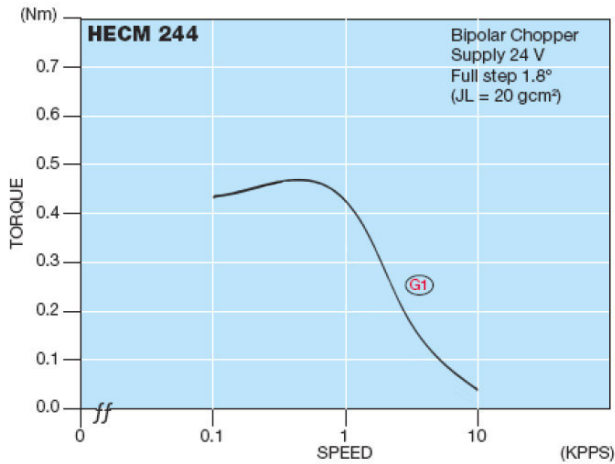
2-Phase Step Motor with Encoder
[1.8° High-Torque-Version]

Model P = Line Driver 200 Pulse/Umd.	● Bipolar (4 Leads)				● Unipolar				Speed Torque
	Holding Torque [Nm]	Current / Phase [A]	Resistance / Phase [Ohm]	Inductance / Phase [mH]	Holding Torque [Nm]	Current / Phase [A]	Resistance / Phase [Ohm]	Inductance / Phase [mH]	
HECM244-F1.3P2200	0.50	1.3	3.6	6.0	—	—	—	—	G1
HECM245-F1.3P2200	0.62	1.3	3.8	6.0	—	—	—	—	H1
HECM246-F1.3P2200	0.93	1.3	5.2	10.0	—	—	—	—	I1

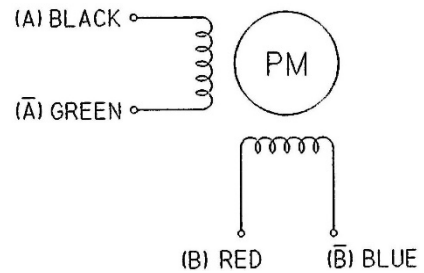
Model	Number of Leads	Weight of Motor & Encoder	Size Length	Rotor Inertia
HECM244	4	0.30 kg	61 mm	$57 \times 10^{-7} \text{ kgm}^2$
HECM245	4	0.40 kg	69 mm	$76 \times 10^{-7} \text{ kgm}^2$
HECM246	4	0.50 kg	81 mm	$114 \times 10^{-7} \text{ kgm}^2$



Planetary Gears are optionally available



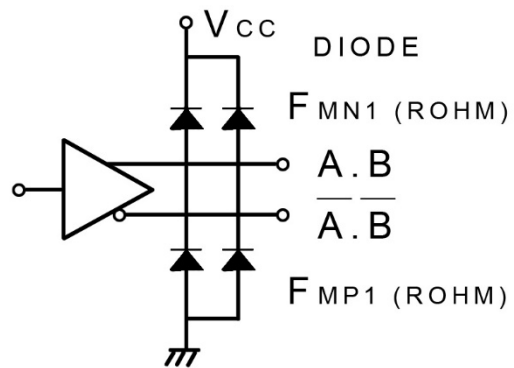
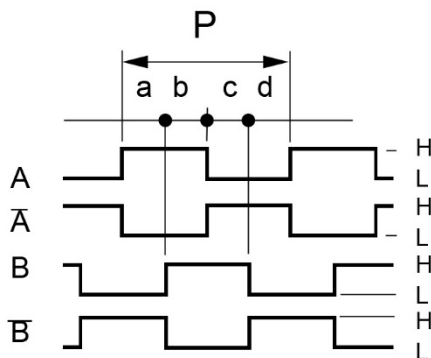
Step Motor - Color of lead wires



Encoder Performance

Operating Temp.range : 0°C - 85°C
 Supply : DC 5V ± 5% , 100mA max
 Resolution : 200 Counts / Turn
 Frequency Response : 100K Hz max.
 A phase difference : 1/4 P ± 1/8 P
 Code : Incremental A.B (2Ch.)

Output Signal : when output is high : DC 2.4V min
 Output Signal : when output is low : DC 0.4V max
 Sinking & Output Current : typical ± 20mA max
 Rise & Fall Times : 1 µsec max
 Moment of inertia : 5 g-cm² max Encoder only
 Output Circuit : Line Driver AM26C3IIDB



CW Rotation viewed from mounting end. Encoder signal A and B position is "H" at Motor 2Phase on.

Color of Leadwires and Funktion :

DC 5V = red	A phase = brown	\bar{A} phase = orange
GND = blue	B phase = yellow	\bar{B} phase = gray

(Old-Version)

A phase = brown	\bar{A} phase = orange
B phase = yellow	\bar{B} phase = white
DC 5V = red	GND = black