



alu-logic

Engineering Hardware Packaging and Logistics Solutions Ltd.

OFFSHORE COMPETENCIES



www.alu-logic.eu

TABLE OF CONTENTS

Offshore Box AL 640	1 - 4
---------------------	-------

Basic Box DL 540	5 - 8
------------------	-------

Defense Box NA 740	9 - 12
--------------------	--------

Offshore Box AL 640

UNCOMPROMISING PERFORMANCE IN INDUSTRIAL ENVIRONMENTS.

Universal box for a broad range of applications, from sea transport to manufacturing, packaging, storage & inland transport, organization or protection. Whether inland or off shore, these boxes perform durably as they are designed and manufactured based on the practical experiences of offshore applications under extreme conditions. With their rigid design you get a trustworthy and yet economical packaging. The boxes are available in 33 standard sizes + in custom sizes on request.

This range offers an aluminum box for universal industrial use, for everyone, requesting a tough and yet economical box.

The AL 640 range comprises 33 models. Capacities range from 13 to 874 liters. If one of these does not fit your requirement, we can make to your size.



Your advantages in detail - technical specification:

- High quality heavy duty aluminium alloy box. 1.0 mm AlMg3 body sheet material on all sizes, strength and durability by design.
- 33 standard available sizes, stackable within range, offering options for logistical packing, storage and transport. Special sizes can be made to order.
- Aluminum profile safety spring handles with plastic molded grip.
- Toggle locks made from aluminium/stainless steel. Corrosion resistant, prepared for cylinder lock, lead seal and padlock, up to shackle \varnothing 6 mm.
- Additional bracing made of stable aluminium profiles. Depending on the size, the bottom and the lid have been additionally reinforced with aluminium reinforcement struts.
- All riveted joints with sealed blind rivets.
- 2 lid straps, 20mm wide, ends sealed to avoid fraying. Fastened with oversized-head rivets to prevent ripping out.
- 95-100° opening angle of the lid.
- IP 54 standard design.
- Stacking corners made of cast aluminium with injection molding.
- All around reinforcement ribs and additional corner ribs depending on size.
- Stainless steel piano hinges lengthwise of the box. Riveted in the body sheet and solid lid profile.
- High-strength welded joints. Gap-free, load-bearing dot welded overlap joint of the body sheet.
- Solid silicone sealing strip profile 8x7mm in the upper rim with specially formed legs to avoid extraction. High temperature tolerance in the event of exposure to both low and high temperatures

Strength hidden in details, materialized as a whole – Offshore Box AL 640

YOUR ADVANTAGE: RIGID DESIGN BALANCED WITH ECONOMY

Many offer products. We deliver solutions. Solutions with all details designed for fulfilling.

Nothing less and nothing more, that's the substance of our products



Stacking corners

Made of cast aluminium with injection molding.



Handles

Aluminium profile safety spring handles with return spring and plastic molded grip.



Toggle lock made from aluminium/stainless steel - 40mm wide.

Corrosion resistant, prepared for cylinder lock, lead seal and padlock, up to shackle thickness 6 mm.



Ribs

All around reinforcement ribs and additional corner ribs depending on size.



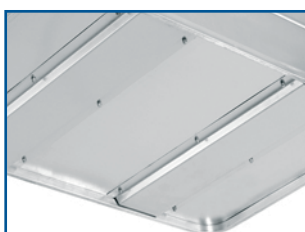
Rivets

All riveted joints are finished with sealed blind rivets.



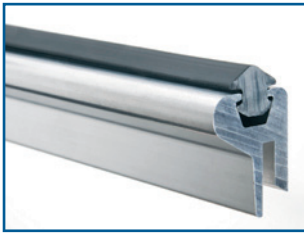
Stainless steel piano hinges lengthwise

Riveted in the body sheet and solid lid profile.



Aluminium profile reinforcement struts

Additional bracing made of stable aluminium profiles. Depending on the size, the bottom and the lid have been additionally reinforced with aluminium reinforcement struts.



Silicone sealing strip

Solid silicone sealing strip profile 8x7mm in the upper rim with specially formed legs to avoid extraction. High temperature tolerance in the event of exposure to both low and high temperatures.



Lid straps

2 lid straps, 20mm wide, ends sealed to avoid fraying. Fastened with oversized-head rivets to prevent ripping out.

High-strength welded joints

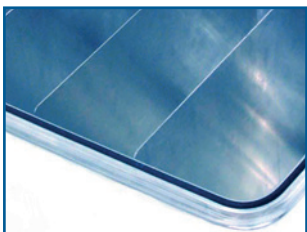
Gap-free load-bearing dot welded overlap joint of the body sheet.



Accessories

TO COMPLETE YOUR BOX INTO A PACKAGING SOLUTION

We offer not only empty boxes but also a range of useful accessories.



Internal divider

We offer adjustable aluminium divider panel sets for the boxes, consisting of aluminium partition walls and struts. They quickly and simply help adjusting the box's interior to whatever you are transporting or storing.

Cylinder lock - lock set

The design of the toggle locks enables fitting of locks that assure safety of sensible contents.

Lock sets are available keyed alike only in the set for one box or the complete ordered series keyed alike.

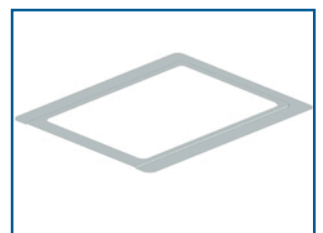


Foam inlets

Special inside inlets. Soft foam inlays made of open-celled PU foam, ready cut to shape. The quick and simple solution for individual units or small batches stored in the box.

Document holder A/4 or A/5

Document holders made of aluminium profiles are put in the inside of the lid on request for storing accompanying documentation of the content like packing lists, etc. They are available in A/4 and A/5 formats.



Optional extras

FOR YOUR SPECIFIC DEMAND

Extras are provided for fulfilling the requirements of planned operations.

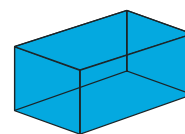
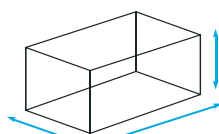
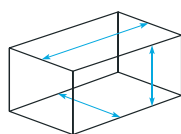
RAL 6031 F9

It might be necessary that the box is painted in a color complying with the application purpose. Powder coating is available in any RAL color or in special colors like RAL 6031 F9 NATO green.



Available sizes in the range Offshore Box AL 640

ADDITIONAL SIZES ARE POSSIBLE ON REQUEST



TYPE	Item number	Internal dimensions mm (LxWxH)	External dimensions mm (LxWxH)	Volume	Weight
AL 640	10210075	500x170x150	530x200x170	13	3,6
AL 640	10210076	785x170x150	815x200x170	20	5,0
AL 640	10210077	1270x220x230	1300x250x250	64	8,4
AL 640	10210078	750x550x780	780x580x800	322	11,8
AL 640	10210079	550x350x150	580x380x170	29	4,9
AL 640	10210080	370x350x310	400x380x330	40	4,5
AL 640	10210081	1150x450x380	1180x480x410	197	11,2
AL 640	10210082	1950x300x155	1980x330x175	91	12,2
AL 640	10210083	350x250x310	380x280x330	27	3,8
AL 640	10210084	550x350x310	580x380x330	60	5,7
AL 640	10210085	550x350x220	580x380x240	42	5,2
AL 640	10210086	550x350x380	580x380x400	73	6,0
AL 640	10210087	750x350x310	780x380x330	81	7,0
AL 640	10210088	750x550x380	780x580x400	157	9,0
AL 640	10210089	750x550x580	780x580x600	239	10,4
AL 640	10210090	850x450x350	880x480x370	134	8,7
AL 640	10210091	1150x750x480	1180x780x500	414	15,2
AL 640	10210092	600x400x485	630x430x505	116	7,3
AL 640	10210093	550x550x220	580x580x240	67	6,5
AL 640	10210094	550x550x380	580x580x400	115	7,4
AL 640	10210095	550x550x580	580x580x600	175	8,6
AL 640	10210096	1470x270x280	1500x300x300	111	10,4
AL 640	10210097	1150x750x310	1180x780x330	267	13,5
AL 640	10210098	1150x750x680	1180x780x700	587	17,3
AL 640	10210099	1550x550x480	1580x580x500	409	16,5
AL 640	10210100	1670x770x680	1700x800x700	874	23,1
AL 640	10210101	360x260x165	390x290x185	15	3,5
AL 640	10210102	1000x350x310	1030x380x330	109	8,6
AL 640	10210103	1000x350x550	1030x380x570	193	10,3
AL 640	10210104	1700x300x310	1730x330x330	158	12,5
AL 640	10210105	390x350x310	420x380x330	42	4,6
AL 640	10210106	370x370x380	400x400x400	52	4,9
AL 640	10210107	1950x300x300	1980x330x320	176	13,9

Basic Box DL 540

BASIC VALUE THAT PERFORMS ENDURABLY UNDER MOST CONDITIONS.

Intended for industrial & universal use for a broad range of applications, like:

manufacturing, packaging, storage & transportation, organization or protection.

Robust transportation boxes, superior in safety and economical in use, equipped with all necessary features to fulfill various tasks.

The boxes are available in 9 standard sizes + in custom sizes on request.

This range offers an aluminum box for the industry or for everyone, requesting a safe and economical box.

The DL 540 range comprises 9 models. Capacities range from 29 to 425 liters. If one of these does not fit your requirement, we can make to your size.



Your advantages in detail - technical specification:

- Quality, durable aluminium box. 1.0 mm aluminium sheet material on all sizes, strength and durability by design.
- 9 standard available sizes, stackable within range, offering options for logistical packing, storage and transport. Special sizes can be made to order.
- Aluminum profile safety spring handles with plastic molded grip.
- Stacking corners made from nylon/polyester and designed for temperatures between -40°C and +180°C are intended for even safer and economical storage.
- Toggle lock made from aluminium/stainless steel - 40mm wide. Corrosion resistant, prepared for cylinder lock, lead seal and padlock, up to shackle thickness 6 mm.
- Corrosion resistant hinges with hinge damage prevention.
- All around reinforcement ribs and additional corner ribs depending on size.
- High-strength welded joints. Gap-free load-bearing dot welded overlap joint of the body sheet.
- Rubber sealing profile in the upper rim for ingress protection against dust and water.
- All riveted joints with sealed blind rivets.
- By types 163 and 415 liters the bottom and the lid have been additionally reinforced with aluminium reinforcement struts.
- 2 lid straps, 20mm wide, ends sealed to avoid fraying. Fastened with oversized-head rivets to prevent ripping out.
- 95-100° opening angle of the lid.
- Removable protection foil on the lid to protect the box against scratches.
- IP 54 standard design

Strength hidden in details, materialized as a whole - Basic Box DL 540

YOUR ADVANTAGE: SUPERIOR IN SAFETY AND ECONOMICAL IN USE

Many offer products. We deliver solutions. Solutions with all details designed for fulfilling.

Nothing less and nothing more, that's the substance of our products



Stacking corners

Stacking corners made from nylon/polyester and designed for temperatures between -40°C and +180°C are intended for even safer and economical storage in a limited space.



Handles

Aluminium profile safety spring handles with return spring and plastic molded grip.



Ribs

All around reinforcement ribs and additional corner ribs depending on size.



Toggle lock made from aluminium/stainless steel - 40mm wide.

Corrosion resistant, prepared for cylinder lock, lead seal and padlock, up to shackle thickness 6 mm.



Hinges

Corrosion resistant hinges with hinge damage prevention.



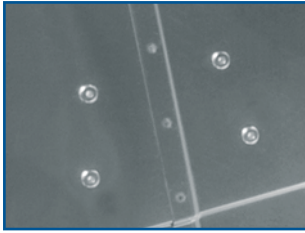
Protection foil

Removable protection foil on the lid to protect the box against scratches.



Aluminium profile reinforcement struts

Additional bracing made of stable aluminium profiles. By types 163 and 415 liters the bottom and the lid have been additionally reinforced with aluminium reinforcement struts.



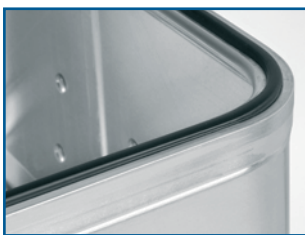
Rivets

All riveted joints are finished with sealed blind rivets.



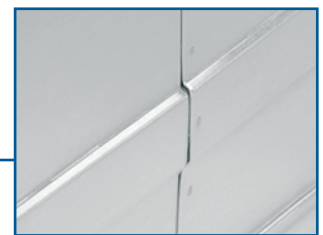
Lid straps

2 lid straps, 20mm wide, ends sealed to avoid fraying. Fastened with oversized-head rivets to prevent ripping out.



Sealing strip

Rubber sealing strip profile in the upper rim for ingress protection against dust and water.



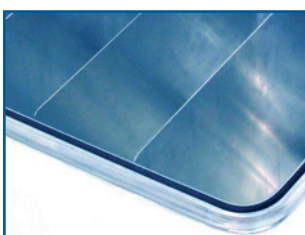
High-strength welded joints

Gap-free load-bearing dot welded overlap joint of the body sheet.

Accessories

TO COMPLETE YOUR BOX INTO A PACKAGING SOLUTION

We offer not only empty boxes but also a range of useful accessories.



Internal divider

We offer adjustable aluminium divider panel sets for the boxes 47, 90 and 91 liters, consisting of aluminium partition walls and struts. They quickly and simply help adjusting the box's interior to whatever you are transporting or storing.

Cylinder lock - lock set

The design of the toggle locks enables fitting of locks that assure safety of sensible contents.

Lock sets are available keyed alike only in the set for one box or the complete ordered series keyed alike.

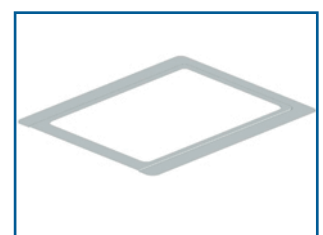


Foam inlets

Special inside inlets. Soft foam inlays made of open-celled PU foam, ready cut to shape. The quick and simple solution for individual units or small batches stored in the box.

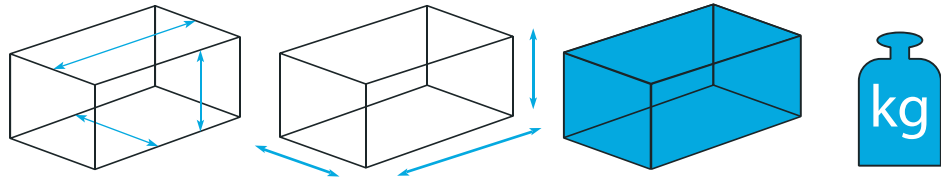
Document holder A/4 or A/5

Document holders made of aluminium profiles are put in the inside of the lid on request for storing accompanying documentation of the content like packing lists, etc. They are available in A/4 and A/5 formats.



Available sizes in the range Basic Box DL 540

ADDITIONAL SIZES ARE POSSIBLE ON REQUEST



TYPE	Item number	Internal dimensions mm (LxWxH)	External dimensions mm (LxWxH)	Volume	Weight
DL 540	10210035	400x300x245	432x335x277	29L	3,3
DL 540	10210036	550x350x245	582x385x275	47L	4,6
DL 540	10210037	550x350x380	582x385x410	73L	5,3
DL 540	10210038	750x350x350	782x385x380	92L	6,2
DL 540	10210039	870x460x350	902x495x380	140L	8,7
DL 540	10210040	750x550x380	782x585x410	157L	9,0
DL 540	10210041	1150x350x380	1182x385x410	153L	10,5
DL 540	10210042	750x550x590	782x585x620	243L	10,7
DL 540	10210043	1160x755x485	1192x790x515	425L	17,5

Defense Box NA 740

REAL VALUE THAT PERFORMS ENDURABLY UNDER EXTREME CONDITIONS.

At every latitude to the polar circles and beyond, whether inland or off shore, these boxes perform durably as they are designed and manufactured based on the practical experiences of military applications under extreme conditions. With their additional reinforcements, heavy duty components you get a snow-, desert- and seaworthy packaging, devoted to mobile operations.

The boxes are available in 19 standard sizes + in custom sizes on request.

This range offers an aluminum box for the defense industry or for everyone, requesting an durable heavy duty box.

The NA 740 range comprises 19 models. Capacities range from 27 to 673 liters. If one of these does not fit your requirement, we can make to your size.



Your advantages in detail - technical specification:

- High quality heavy duty aluminium alloy box. 1.0 mm AlMg3 body sheet material on all sizes, strength and durability by design.
- Heavy duty stainless steel spring drop handles with return spring and plastic molded grip, fixed with 6 solid rivets.
- 1,5mm backup plate for the handles' riveting in the inside of the box.
- Toggle locks made from aluminium/stainless steel. Corrosion resistant, prepared for cylinder lock, lead seal and padlock, up to shackle Ø 6 mm. Lock fixed with 4 solid rivets to the body.
- Every box reinforced with aluminium profile reinforcement struts.
- All riveted joints with solid rivets.
- 2 lid straps, 20mm wide, ends sealed to avoid fraying. Fastened with oversized-head rivets to prevent ripping out.
- 115-120° opening angle of the lid, to prevent accidental fall.
- PU resin sealing of all joints and rivet heads inside to provide water-tightness up to the lid.
- IP 54 standard design, IP 65 version with additional sealing in the lid available where it needs an extra protection.
- Stacking corners made of cast aluminium with injection molding.
- All around reinforcement ribs and additional corner ribs.
- Stainless steel piano hinges lengthwise of the box. Riveted in the body sheet and solid lid profile.
- High-strength welded joints. Gap-free, load-bearing dot welded overlap joint of the body sheet.
- Solid silicone sealing strip profile 8x7mm in the upper rim with specially formed legs to avoid extraction. High temperature tolerance in the event of exposure to both low and high temperatures

Strength hidden in details, materialized as a whole - Defense Box NA 470

YOUR ADVANTAGE: REAL VALUE THAT PERFORMS ENDURABLY

Many offer products. We deliver solutions. Solutions with all details designed for fulfilling.

Nothing less and nothing more, that's the substance of our products



Stacking corners

Made of cast aluminium with injection molding.



Handles

Heavy duty stainless steel spring drop handles with return spring and plastic molded grip.



Toggle lock made from aluminium/stainless steel - 40mm wide.

Corrosion resistant, prepared for cylinder lock, lead seal and padlock, up to shackle thickness 6 mm. Lock fixed with 4 solid rivets to the body. Catch-hook fixed with 3 solid rivets to the lid.



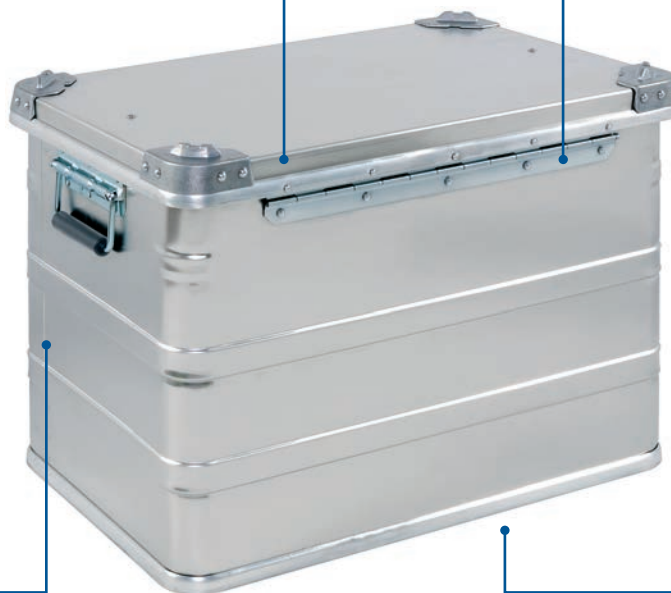
Ribs

All around reinforcement ribs and additional corner ribs depending on size.



All solid rivets

All riveted joints are finished with solid rivets.



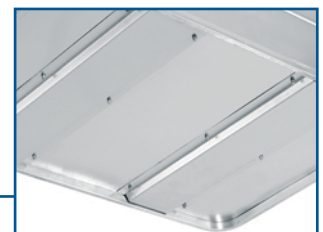
Stainless steel piano hinges lengthwise

Riveted in the body sheet and solid lid profile.



High-strength welded joints

Gap-free load-bearing dot welded overlap joint of the body sheet.



Aluminium profile reinforcement struts

Additional bracing made of stable aluminium profiles on base plate.



Backup plate

1,5mm backup plates for fixing the handles in the inside, for additional reinforcement and load-bearing of the handles.



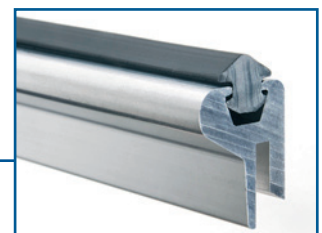
Lid straps

2 lid straps, 20mm wide, ends sealed to avoid fraying. Fastened with oversized-head rivets to prevent ripping out.



PU-Sealing

PU resin sealing of all joints and rivet heads in the inside to provide water-tightness.



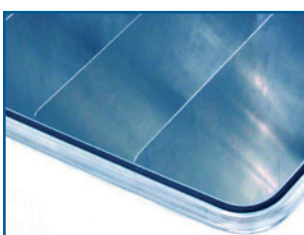
Silicone sealing strip

Solid silicone sealing strip profile 8x7mm in the upper rim with specially formed legs to avoid extraction. High temperature tolerance in the event of exposure to both low and high temperatures.

Accessories

TO COMPLETE YOUR BOX INTO A PACKAGING SOLUTION

We offer not only empty boxes but also a range of useful accessories.



Internal divider

We offer adjustable aluminium divider panel sets for the boxes, consisting of aluminium partition walls and struts. They quickly and

simply help adjusting the box's interior to whatever you are transporting or storing.



Foam inlets

Special inside inlets. Soft foam inlays made of open-celled PU foam, ready cut to shape. The quick and simple solution for individual units

or small batches stored in the box.

Cylinder lock - lock set

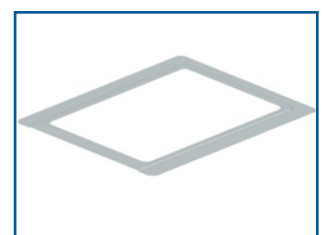
The design of the toggle locks enables fitting of locks that assure safety of sensible contents.

Lock sets are available keyed alike only in the set for one box or the complete ordered series keyed alike.



Document holder A/4 or A/5

Document holders made of aluminium profiles are put in the inside of the lid on request for storing accompanying documentation of the content like packing lists, etc. They are available in A/4 and A/5 formats.



Optional extras

FOR YOUR SPECIFIC DEMAND

Extras are provided for fulfilling the requirements of planned operations.



RAL 6031 F9

It might be necessary that the box is painted in a color complying with the application purpose.

Powder coating is available in any RAL color or in special colors like RAL 6031 F9 NATO green.

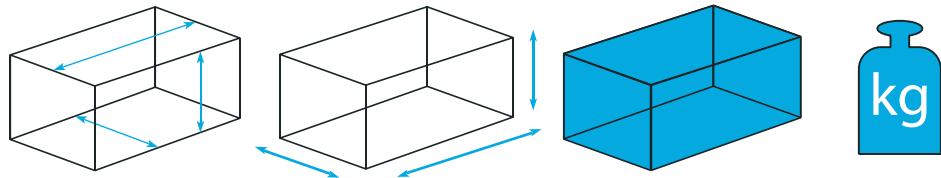
Additional sealing in the lid

Additional all around sealing strip in the lid, improving the box into IP 65.



Available sizes in the range Defense Box NA 740

ADDITIONAL SIZES ARE POSSIBLE ON REQUEST



TYPE	Item number	Internal dimensions mm (LxWxH)	External dimensions mm (LxWxH)	Volume	Weight
NA 740	10210006	350x250x310	380x280x330	27	3,9
NA 740	10210007	550x350x150	580x380x170	29	5,0
NA 740	10210008	550x350x220	580x380x240	42	5.3
NA 740	10210009	550x350x310	580x380x330	60	5,8
NA 740	10210026	1150x350x150	1180x380x170	60	8,4
NA 740	10210010	550x350x380	580x380x400	73	6,1
NA 740	10210014	750x350x310	780x380x330	81	7,1
NA 740	10210013	670x370x430	700x400x450	107	7,3
NA 740	10210003	550x550x380	580x580x400	115	7,5
NA 740	10210027	1350x400x220	1380x430x240	119	10,7
NA 740	10210025	2000x350x220	2030x380x240	154	14,1
NA 740	10210015	750x550x380	780x580x400	157	9,1
NA 740	10210017	950x450x380	980x480x400	162	9,8
NA 740	10210024	1180x440x350	1210x470x370	182	11,1
NA 740	10210005	1160x450x400	1190x480x420	209	11,5
NA 740	10210002	730x540x550	760x570x570	217	10,0
NA 740	10210001	750x550x580	780x580x600	239	10,5
NA 740	10210018	1150x750x480	1180x780x500	414	15,4
NA 740	10210004	1150x750x780	1180x780x800	673	18,4



alu-logic

Engineering Hardware Packaging and Logistics Solutions Ltd.

Cellphone: +36 30 288 6238
Telefon/Fax: +36 76 427 128
E-mail: info@alu-logic.eu
H - 6000 Kecskemét, Klapka u. 22.



www.alu-logic.eu