

CHEMICAL RESISTANCE RATING GUIDE

O- no effect M- moderate effect S- severe effect

ALCOHOLS

Benzyl Alcohol	O
Ethyl Alcohol	O
Isopropyl Alcohol	O
Methyl Alcohol	O
Ethylene Glycol	O
Methyl Ethyl Ketone	O
Methyl Isobutyl Ketone	O
Glycerol	O
1-Hexanol	O
Resorcinol	O

ALDEHYDES

Benzaldehyde	O
Buraldehyde	O
Furfural	O

AMINES

Aniline	O
Triethanolamine	O

DETERGENTS & OTHER CLEANING PRODUCTS

Calgonite (1%)	O
Clorox (1%)	O
Clorox (Concentrate)	O
Joy (1%)	O
Joy (Concentrate)	O
Lestoil (1%)	O
Lux Flakes	O
Rinse Dry (1%)	O
Rinse Dry (Concentrate)	O
Tide (1%)	O

ESTERS

Amyl Acetate	O
Dibutyl Sebacate	O
Diethyl Phthalate	O
Ethyl Acetate	O
Tricresyl Phosphate	O

ETHERS

Dibenzyl Ether	O
Diethylene Glycol Monobutyl Ether	O
Ethyl Ether	O
Ethylene Glycol Monoethyl Ether	O

HALOGENATED HYDROCARBONS

Benzyl Chloride	O
Bromobenzene	O
Carbon Tetrachloride	O
Chloroform	O
Ethylene Dichloride	O
Perchloroethylene	O

HYDROCARBONS

Benzene	O
Cyclohexane	O
Ethylbenzene	O
Heptane	O
Hexane	O

Naphthalene	O
Toluene	O
Xylene	O

OTHER SUBSTITUTED HYDROCARBONS

Carbon Disulphide	O
Nitrobenzene	O

HYDRAULIC FLUIDS

Oronite 8200	O
Pydraul F9	O
Pydraul 60	O
Skydrol	O
Skydrol 500	O

INORGANIC ACIDS

Chlorosulphonic Acid (10%)	S
Chromic Acid (10%)	M
Chromic Acid (Concentrate)	M
Hydrochloric Acid (10%)	M
Hydrochloric Acid (Concentrate)	S
Hydrofluoric Acid (Concentrate)	M
Nitric Acid (10%)	S
Phosphoric Acid (Concentrate)	M
Sulphuric Acid (10%)	M
Sulphuric Acid (Concentrate)	S

INORGANIC BASES

Barium Hydroxide (Concentrate)	O
Calcium Hydroxide (Concentrate)	O
Potassium Hydroxide (10%)	M
Sodium Hydroxide (10%)	M
Sodium Hydroxide (Concentrate)	M

INORGANIC SALTS (25% Solution)

Ammonium Chloride	M
Ammonium Nitrate	O
Barium Chloride	M
Calcium Chloride	M
Calcium Hypochlorite	M
Cupric Chloride	M
Cupric Sulphate	O
Ferric Chloride	M
Ferric Nitrate	O
Ferrous Sulphate	O
Magnesium Chloride	M
Magnesium Sulphate	O
Nickel Sulphate	O
Potassium Chloride	M
Potassium Permanganate	O
Potassium Bisulphite	O
Potassium Dichromate	M
Sodium Borate (Borax)	O
Sodium Bicarbonate	O
Sodium Chloride	M
Zinc Nitrate	O
Sodium Chloride - Saturated	M

KETONES

Acetone	O
---------	---

MISCELLANEOUS

Gelatine (sat. sol'n)	O
Glucose (sat. sol'n)	O
Antifreeze	O
Brake Fluid	O
Transmission Fluid	O

NATURAL FATS & OILS

Butter	O
Castor Oil	O
Cottonseed Oil	O
Lard	O
Oleomargarine	O
Olive Oil	O
White Mineral Oil	O

OILS & FUELS

A.S.T.M. No. 1 Oil	O
A.S.T.M. No. 2 Oil	O
A.S.T.M. No. 3 Oil	O
A.S.T.M. Fuel A	O
A.S.T.M. Fuel B	O
A.S.T.M. Fuel C	O
Heating Fuel Oil	O
Jet Aircraft Engine Oil	O

ORGANIC ACIDS

Acetic Acid (10%)	M
Acetic Acid (Glacial)	M
Citric Acid (10%)	M
Formic Acid (10%)	M
Lactic Acid (10%)	M
Oleic Acid (100%)	O
Oxalic Acid (10%)	M
Phenol (10%)	O
Phenol (100%)	M
Picric Acid (10%)	M
Stearic Acid (100%)	O
Tannic Acid (10%)	O
Tartaric Acid (10%)	M

WATER

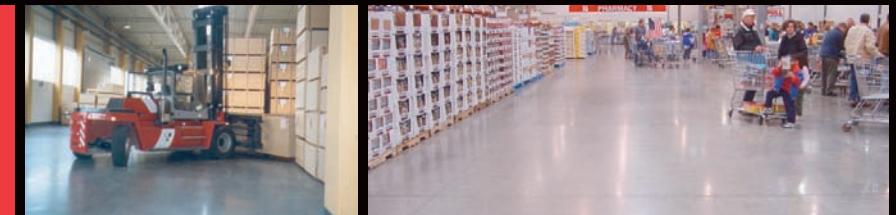
Distilled Water	O
Seawater	M

NOTE: Chemical mixtures do not necessarily have the same effect or lack of effect on the Ashford Formula than those of the individual components within a given blend. Chemical attack can be influenced by temperature, contact time, concentration and composition. The information and recommendations contained in this bulletin are based on data believed to be reliable, but all such information and recommendations are specified without guarantee or warranty.

ASHFORD FORMULA™

THE FINAL TREATMENT FOR YOUR CONCRETE

maintenance only adds to the quality.



CURECRETE DISTRIBUTION, INC.
 HQ 1203 W. SPRING CREEK PLACE SPRINGVILLE, UTAH 84663
 P 801.489.5663 F 801.489.3307
www.ashfordformula.com



introduction

Your facility has recently been treated with the Ashford Formula, the world's most widely used concrete densifier. Through a unique process, the concrete becomes extremely hard, dense, and dust proof and will completely seal within 6-12 months after application. This sealing process will be hastened by implementing a consistent, quality maintenance program. Fortunately, cleaning your Ashford Formula floor is convenient, economical, and will result in a floor that has a marble-like sheen that improves with age. With the Ashford Formula, there is no surface film or coating present to peel, blister, or require replacement. The floor's performance, as well as the satin sheen that develops over time, is enhanced by proper cleaning and maintenance. Following the Maintenance Program outlined here will ensure optimal performance.

optimum results

This program is designed for you to achieve optimum results for your new Ashford floor. The following three floors represent what you can expect by adhering to our maintenance program.

1. Costco
2. Cooper Auto
3. Saturn Plant



maintenance program

An effective maintenance program that includes daily scrubbing with aggressive bristle brushes, ample down pressure, and liberal amounts of water and detergent will enhance the floor's performance significantly. Implementation of the following maintenance program will allow the Ashford Formula to continue to react with the concrete, forcing contaminants out of the floor surface. Stains will become lighter and less discernible as the marble-like sheen develops.

recommended supplies

- Automatic scrubber — capable of 300 pounds of downward pressure.
- Black Stripping Pads or Nylo-Grit Brushes (Nylon bristles tipped with Silicon Carbide) — accelerates the sheen and creates a more uniform appearance.
- Polypropylene or Stiff-Poly brushes — regular maintenance after sheen develops
- Alkaline (med-high) detergent (void of sulfates, hydroxides, acidic chemicals, and D-Limonene) — acidic cleaners or sweeping compounds will dull the appearance of the surface. Acid concentrates will permanently etch the surface.
- Oil emulsifier Crete-Strip/water — use concentrates directly on stain for spot treatment.
- Large volumes of water — water used while cleaning the concrete's surface will actually accelerate the sealing properties and hasten the reaction between the Ashford Formula and the concrete.

scheduled maintenance

- Scrub floor OFTEN
Minimum routine detergent scrubbing 2-3 times per week
- Clean spills QUICKLY
Concrete will resist contamination and moisture penetration of most liquids following the sealing period. Food stains such as mustard, grape juice, etc., may leave a residual stain if not removed quickly.

cleaning products

- Detergents:
Crete-Clean (pH of 10-11) Curecrete Distribution, Inc.
5 gallon pails, 55 gallon drums
- Oil Emulsifier
Crete-Strip Curecrete Distribution, Inc.
5 gallon pails, 55 gallon drums
- Automatic Scrubber
For discount pricing on automatic scrubbers, contact Curecrete Distribution, Inc. Your local janitorial supply house will also carry scrubbers.

expectations from a properly maintained floor

IMMEDIATELY AFTER TREATMENT

- The hardening and dust proofing will take effect within the first few days of treatment. The floor will have a normal concrete appearance or a slight sheen (broom-finished or rough-textured concrete will retain its natural concrete appearance).
- The floor is not completely sealed. It will allow penetration for the first 6-12 months as the permanent internal sealing process is completed. Susceptible to staining, all spills and contaminants should be removed quickly. Routine detergent scrubbing will lighten and help leach out stains as the floor continues to seal and will accelerate the sealing process.
- The denseness and hardness of the floor will be immediately enhanced. However, care should be taken not to gouge the floor with nails, etc. after the initial placement.
- To accelerate the sheen, the floor can be burnished with a black stripping pad at 2000-3500 RPMS, or clean daily using an auto-scrubber equipped with Nylo-grit brushes.
- To further enhance the intensity of the sheen, the floor can be buffed with a red pad.

3-6 MONTHS AFTER TREATMENT

- If the standard maintenance program is followed, smooth-troweled floor surfaces will have developed a sheen.

12 MONTHS AFTER TREATMENT

- A hard-shell finished surface will develop.
- The sealing process is complete, which results in a surface that will be resistant to contamination and moisture penetration by most liquids and contaminants.

sales representative

applicator

troubleshooting contacts

Should you experience any problems or have any questions regarding the maintenance of your Ashford Formula floor, please contact:

Director of Quality Control
(800) 998-5664
qualitycontrol@ashfordformula.com

Director of Technical Support
(800) 998-5664
techsupport@ashfordformula.com