

NPK®

Product guide



NPK®

www.npke.eu

a division of Nippon Pneumatic Mfg. Co. Ltd. Osaka Japan



NPK Japan



NPK France S.A.S.



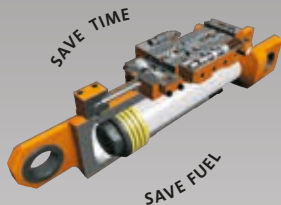
WTC Rotterdam
NPK Europe (Holland) BV

NPK Europe Mfg. s.r.o.
Czech Republic

Hydraulic Pulverizer

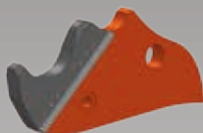
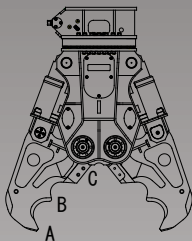


Different style of tooth plates
for different types of applications



Model	V160R	V250R
Excavator weight (t)	16 - 21	24 - 35
Weight (kg)	1650	2750
Max. jaw opening (mm)	750	900
Working pressure (MPa)	28	28
Oil flow (l/min)	80 - 150	100 - 200
Rotation pressure (MPa)	14	14
Rotation oil flow (l/min)	10 - 15	15 - 40
Max. force (A) (kN)	795	1020
Max. force (B) (kN)	1050	1330
Max. force (Cutter) (kN)	1960	2250
Opening time (sec.)	0,8	0,9
Closing time (sec.)	1,8	2,3
Total cycle time (sec.)	2,6	3,2
Number of cycles (n/min)	23	19
Oil flow (l/min)	150	200

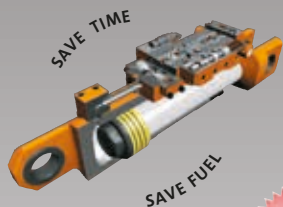
Concrete Crusher



Optional:
SV250R with replaceable tooth



Model	SV-7XR	SV140R	SV250R	SV380R
Excavator weight (t)	6 - 9	10 - 16	19 - 28	29 - 38
Weight (kg)	745	1450	2470	3800
Max. jaw opening (mm)	700	970	1200	1400
Working pressure (MPa)	28	28	28	28
Oil flow (l/min)	50 - 130	80 - 230	100 - 400	150 - 500
Rotation pressure (MPa)	14	14	14	14
Rotation oil flow (l/min)	15 - 30	15 - 30	15 - 30	15 - 30
Max. force (A) (kN)	470	700	1150	1400
Max. force (B) (kN)	720	1130	1815	2220
Max. force (C) (kN)	1530	2200	3450	4370
Opening time (sec.)	0,9	0,9	1,2	1,2
Closing time (sec.)	1,8	1,9	2,1	2,3
Total cycle time (sec.)	2,7	2,8	3,3	3,5
Number of cycles (n/min)	22	21	18	17
Oil flow (l/min)	130	230	400	500



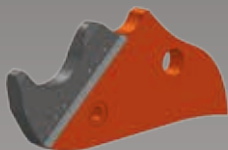
Model	SV400R	SV500R	SV-65XR	SV-100XR
Excavator weight (t)	29 - 38	39 - 48	60 - 70	80 - 100
Weight (kg)	4100	4960	6625	9200
Max. jaw opening (mm)	1500	1750	2000	2200
Working pressure (MPa)	28	28	26	28
Oil flow (l/min)	150 - 500	175 - 600	200 - 700	200 - 800
Rotation pressure (MPa)	14	14	14	14
Rotation oil flow (l/min)	15 - 30	15 - 30	20 - 30	20 - 40
Max. force (A) (kN)	1500	1780	2140	2660
Max. force (B) (kN)	2470	3020	3250	4200
Max. force (C) (kN)	4860	5670	5780	7350
Opening time (sec.)	1,4	1,3	1,2	2,1
Closing time (sec.)	2,7	2,9	3,1	4,4
Total cycle time (sec.)	4,1	4,2	4,3	6,5
Number of cycles (n/min)	15	14	14	9
Oil flow (l/min)	500	600	700	800

Concrete Crusher

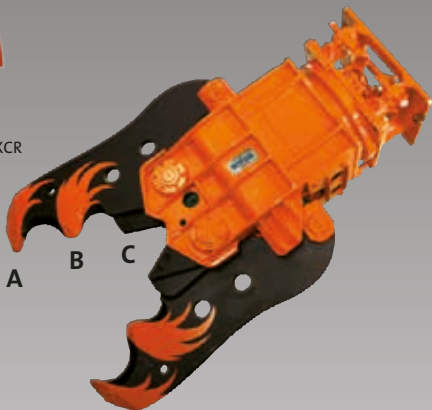
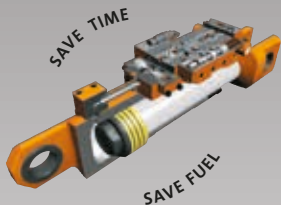


*Optional: HYDRAULIC ROTATION

Model	X-1	X-3A*	X-4A*	X-7A*	S-13XCR
Excavator weight (t)	1,3 - 2,0	2,5 - 4,0	3,5 - 5,5	6 - 9	10 - 15
Weight (kg)	130	280	350	670	1485
Max. jaw opening (mm)	260	354	460	550	810
Working pressure (MPa)	21	21	21	25	25
Oil flow (l/min)	20 - 30	30 - 50	30 - 50	50 - 80	80 - 150
Rotation pressure (MPa)	-	-	-	-	14
Rotation oil flow (l/min)	-	-	-	-	10 - 15
Max. force (A) (kN)	240	320	330	490	660
Max. force (B) (kN)	-	480	500	771	1070
Max. force (C) (kN)	860	920	1050	1300	1750
Opening time (sec.)	0,9	0,8	1,0	1,1	1,6
Closing time (sec.)	1,7	1,5	1,9	2,1	2,3
Total cycle time (sec.)	2,6	2,3	2,9	3,2	3,9
Number of cycles (n/min)	23	26	21	19	15
Oil flow (l/min)	30	50	50	80	150

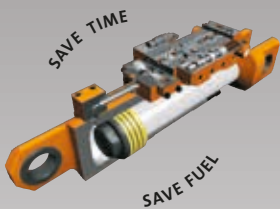


Optional:
Replaceable tooth up to S-24XCR

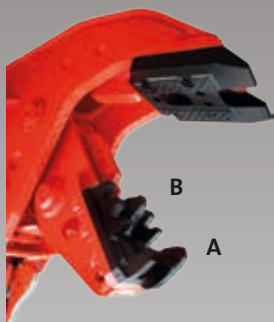


Model	S-16XCR	S-23XCR	S-24XCR	S-36XCR	S-42XCR
Excavator weight (t)	14 - 18	19 - 21	19 - 27	29 - 38	39 - 48
Weight (kg)	1820	2370	2550	3800	4550
Max. jaw opening (mm)	850	1020	1100	1355	1500
Working pressure (MPa)	25	28	25	25	25
Oil flow (l/min)	80 - 150	100 - 200	100 - 200	150 - 250	175 - 275
Rotation pressure (MPa)	14	14	14	14	14
Rotation oil flow (l/min)	10 - 15	10 - 15	10 - 15	20 - 30	20 - 30
Max. force (A) (kN)	710	890	1000	1400	1520
Max. force (B) (kN)	1150	1390	1570	2200	2470
Max. force (C) (kN)	2250	2910	3350	3800	4200
Opening time (sec.)	1,8	2,0	2,0	2,9	3,0
Closing time (sec.)	2,5	2,5	3,5	3,8	4,4
Total cycle time (sec.)	4,3	4,5	5,5	6,7	7,4
Number of cycles (n/min)	14	13	11	9	8
Oil flow (l/min)	150	200	200	250	275

Concrete Cruncher

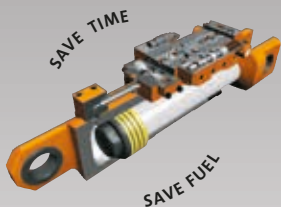


Model	G70	G120	G-18JX	G-28J
Excavator weight (t)	6 - 10	10 - 17	17 - 22	25 - 38
Weight (kg)	690	1165	2150	2960
Max. jaw opening (mm)	600	775	823	1000
Working pressure (MPa)	26	28	26	28
Oil flow (l/min)	50 - 80	80 - 150	100 - 200	100 - 250
Rotation pressure (MPa)	-	-	-	-
Rotation oil flow (l/min)	-	-	-	-
Max. force (A) (kN)	410	690	820	1170
Max. force (B) (kN)	550	950	1060	1530
Opening time (sec.)	1,2	0,8	0,9	1,6
Closing time (sec.)	2,1	1,8	2,3	2,9
Total cycle time (sec.)	3,3	2,6	3,2	4,5
Number of cycles (n/min)	18	23	19	13
Oil flow (l/min)	80	150	200	250



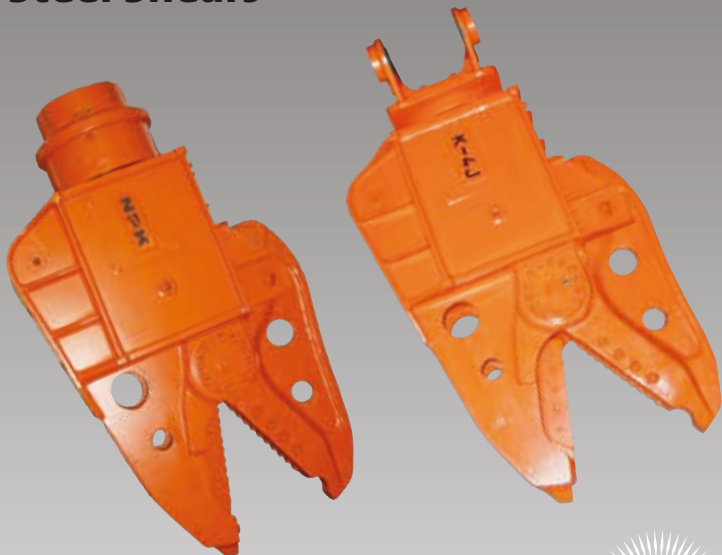
Model	U-21JXR	U-31JX	U-31JXR	U-45JR
Excavator weight (t)	19 - 28	29 - 48	29 - 48	45 - 50
Weight (kg)	2325	3000	3455	4560
Max. jaw opening (mm)	800	980	980	1130
Working pressure (MPa)	26	28	28	30
Oil flow (l/min)	100 - 200	100 - 250	100 - 250	175 - 275
Rotation pressure (MPa)	14	-	14	14
Rotation oil flow (l/min)	10 - 15	-	10 - 15	20 - 30
Max. force (A) (kN)	645	1150	1150	1260
Max. force (B) (kN)	885	1540	1540	1740
Opening time (sec.)	1,2	1,6	1,6	2,4
Closing time (sec.)	1,6	2,9	2,9	3,0
Total cycle time (sec.)	2,8	4,5	4,5	5,4
Number of cycles (n/min)	21	13	13	11
Oil flow (l/min)	200	250	250	275

Concrete Cruncher with Electromagnet



Model	G-25JEH	G-35JEH	G-45EH
Excavator weight (t)	19 - 28	29 - 48	45 - 50
Weight (kg)	2650	3550	4500
Max. jaw opening (mm)	823	980	1130
Working pressure (Mpa)	26	28	30
Oil flow (l/min)	100 - 200	100 - 250	175 - 275
Max force (A) (kN)	820	1150	1240
Max force (B) (kN)	1060	1540	1680
Magnet voltage (V)	DC 220	DC 220	DC 220
Dimensions magnet (mm)	600x250	720x250	720x250
Power (kW)	2,4	3,4	3,4

Steel Shears

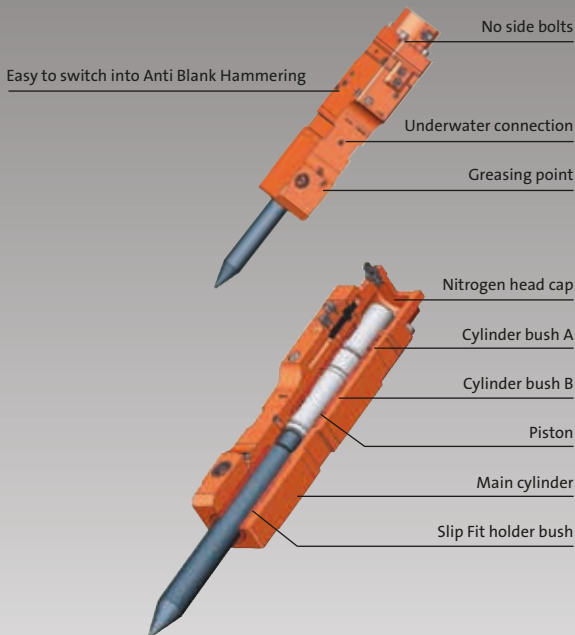


Optional:
HYDRAULIC ROTATION

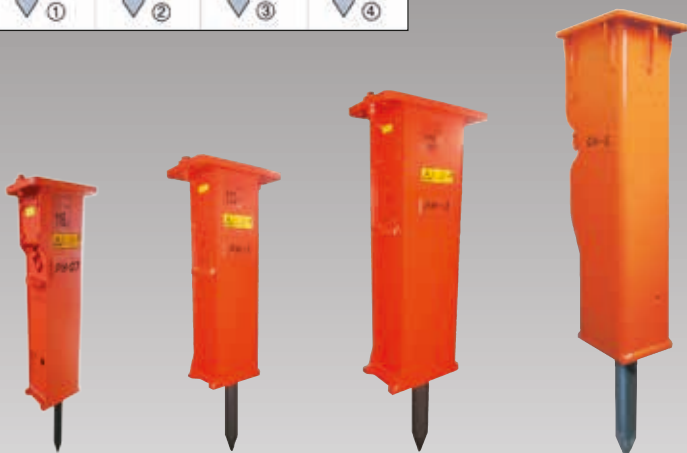
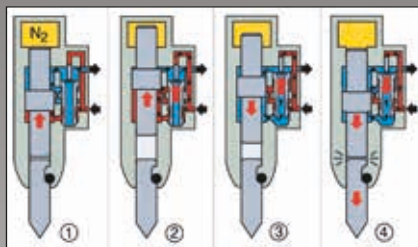


Model	K-3J	K-4J	K-7J
Excavator weight (t)	2,5 - 3,5	3,5 - 5,5	6 - 9
Weight (kg)	280	370	680
Working pressure (MPa)	18	18	21
Oil flow (l/min)	30 - 50	30 - 50	50 - 80
Max. force (kN)	716	785	1290
Max. jaw opening (mm)	340	399	532
Cutter length (mm)	220	260	340

Hydraulic Hammer – PH-series (6 models)



Model	E-106	PH-06	PH-07	PH-1
Excavator weight (t)	0,7 - 1,0	1,0 - 2,0	1,5 - 3,0	2,0 - 3,5
Weight (kg)	62	94	112	162
Total length (mm)	872	991	1035	1154
Oil flow (l/min)	15 - 20	15 - 35	15 - 45	25 - 55
Blow frequency (bpm)	900 - 1200	480 - 1200	450 - 1300	550 - 1100
Min. exc. pressure (MPa)	15 ~	20 ~	21 ~	21 ~
Chisel diameter (mm)	41	42	47	57



Model	PH-2	PH-3	PH-4	GH-6
Excavator weight (t)	3,0 - 5,5	4,0 - 9,0	6,0 - 12,0	12,0 - 18,0
Weight (kg)	200	314	465	851
Total length (mm)	1240	1395	1570	1931
Oil flow (l/min)	25 - 60	45 - 100	50 - 120	90 - 150
Blow frequency (bpm)	500 - 1200	500 - 1150	400 - 1000	460 - 800
Min. exc. pressure (MPa)	21 ~	21 ~	21 ~	21 ~
Chisel diameter (mm)	66	76	86	106

Hydraulic Hammer – GH-series (10 models)

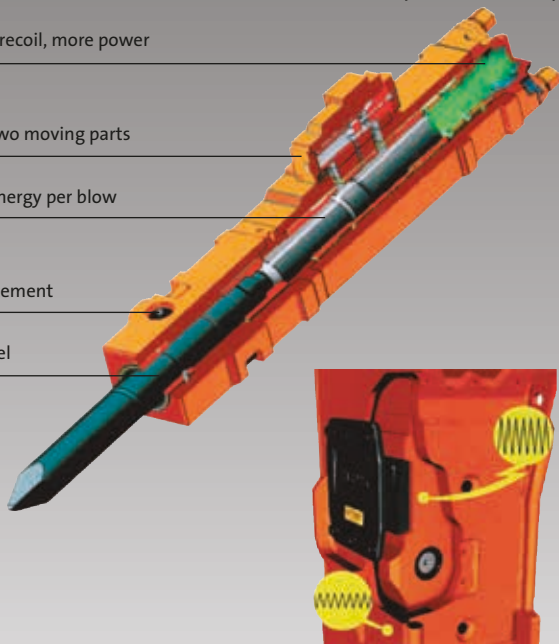
Nitrogen gas: less recoil, more power

Main valve: only two moving parts

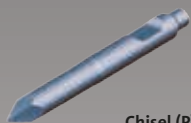
Piston: constant energy per blow

Rapid chisel replacement

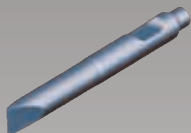
Genuine NPK Chisel



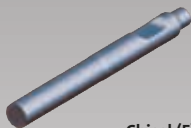
Model	GH-7A	GH-9	GH-10	GH-12	GH-15
Excavator weight (t)	14 - 21	17 - 24	21 - 28	24 - 38	28 - 45
Weight (kg)	1220	1482	1691	2085	2618
Total length (mm)	2235	2356	2535	2738	2933
Oil flow (l/min)	100 - 180	150 - 200	165 - 210	170 - 220	200 - 250
Blow frequency (bpm)	400 - 750	500 - 650	430 - 550	400 - 520	350 - 450
Min. exc. pressure (MPa)	21 ~	21 ~	21 ~	21 ~	21 ~
Chisel diameter (mm)	116	126	136	146	156



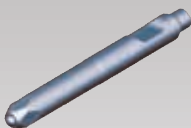
Chisel (P)



Chisel (FX)



Chisel (E)

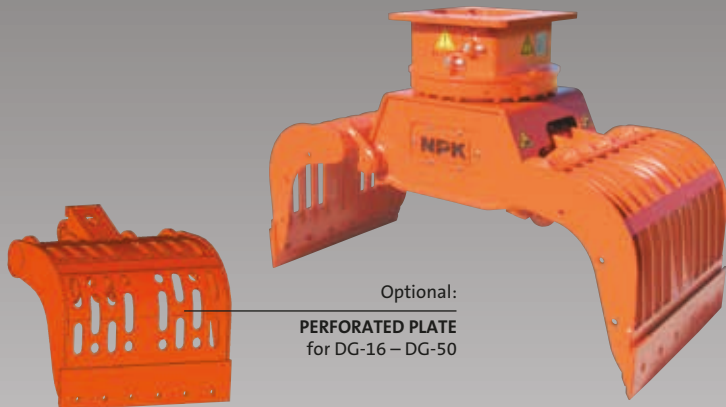


Chisel (PC)



Model	GH-18	GH-23	GH-30	GH-40
Excavator weight (t)	38 - 50	50 - 60	50 - 80	90 - 110
Weight (kg)	3067	4525	5450	7750
Total length (mm)	3056	3320	3552	3867
Oil flow (l/min)	220 - 290	250 - 320	280 - 350	300 - 400
Blow frequency (bpm)	300 - 400	300 - 400	310 - 390	240 - 330
Min. exc. pressure (MPa)	21 ~	21 ~	21 ~	21 ~
Chisel diameter (mm)	165	174	184	204

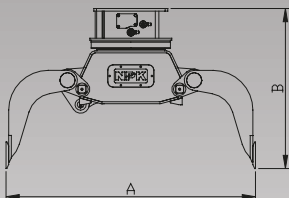
Demolition Grabs



Optional:

PERFORATED PLATE
for DG-16 – DG-50

Model	DG-1	DG-4	DG-6	DG-9	DG-14
Excavator weight (t)	0,7 - 1,5	2,5 - 4,0	4 - 6	5 - 9	7 - 14
Weight (kg)	75	172	290	450	642
Capacity (L)	25	90	150	180	300
Working pressure (MPa)	18 - 26	18 - 26	20 - 28	22 - 32	25 - 35
Oil flow (l/min)	10 - 20	15 - 35	20 - 40	30 - 50	30 - 60
Closing force (kN)	6	15	21	32	38
Rotation:					
Working pressure (MPa)	16 - 26	18 - 26	10 - 13	10 - 13	10 - 14
Oil flow (l/min)	5 - 18	12 - 22	10 - 15	12 - 15	20 - 30
Dimensions:					
A (mm)	640	1145	1355	1632	1800
B (mm)	595	800	1045	1080	1175
Width (mm)	300	450	500	580	700



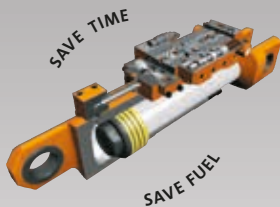
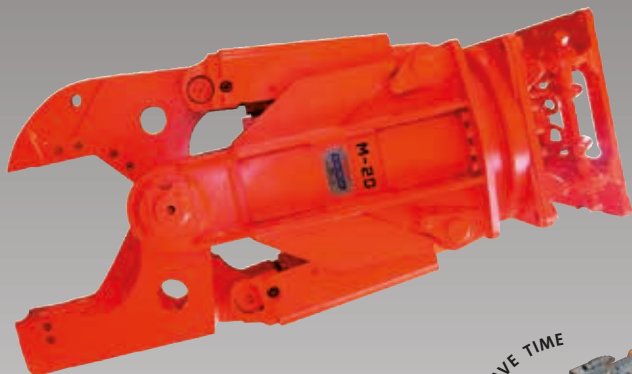
Optional:

DOUBLE MOTOR
for DG-20 – DG-50

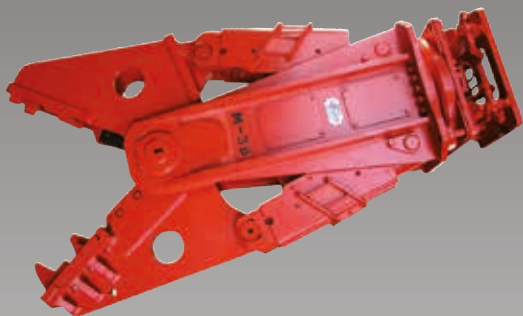


Model	DG-16	DG-20	DG-30	DG-40	DG-50
Excavator weight (t)	10 - 16	14 - 20	18 - 30	25 - 40	35 - 50
Weight (kg)	875	1230	1850	2050	2500
Capacity (L)	425	500	800	900	1100
Working pressure (MPa)	25 - 35	25 - 35	25 - 35	25 - 35	25 - 35
Oil flow (l/min)	60 - 100	60 - 100	80 - 120	80 - 120	100 - 140
Closing force (kN)	48	52	72	72	90
Rotation:					
Working pressure (MPa)	10 - 14	10 - 14	10 - 14	10 - 14	10 - 16
Oil flow (l/min)	20 - 30	20 - 30	20 - 30	20 - 30	30 - 50
Dimensions:					
A (mm)	1850	2050	2410	2410	2450
B (mm)	1235	1300	1485	1485	1560
Width (mm)	860	950	1115	1360	1450

Multi-Processor



Model	M-20S/G/K	M-28S/G/K	M-38S/G/K
Excavator weight (t)	17 - 24	28 - 40	35 - 45
Weight (kg)	2000/2100/2100	2970/3150/3130	3850/4150/4250
Max. jaw opening (mm)	940/770/540	1067/910/638	1230/1140/735
Working pressure (MPa)	25	25	25
Oil flow (l/min)	100 - 250	150 - 350	175 - 400
Rotation pressure (MPa)	14	14	14
Rotation oil flow (l/min)	10 - 15	10 - 30	10 - 30
Max. force (A) (kN)	690/740/800	1030/1120/1190	1300/1360/1510
Max. force (B) (kN)	1070/1250/1480	1400/1500/1700	2000/2000/2680
Max. force (C) (kN)	3250	4500	5900



Type S

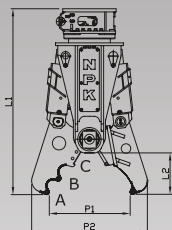


Type G

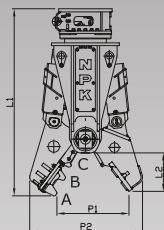


Type K

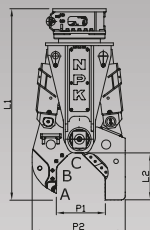
Type S



Type G



Type K



Model	M-20S/G/K	M-28S/G/K	M-38S/G/K
L1 (mm)	2276/2268/2376	2631/2652/2716	3200/3250/3325
L2 (mm)	401/393/501	542/505/627	781/709/654
P1 (mm)	940/770/540	1067/910/638	1230/1140/735
P2 (mm)	1245/1181/1052	1517/1480/1273	1670/1665/1495
Opening time (sec.)	1,1	1,5	2,0
Closing time (sec.)	2,2	2,7	3,6
Total cycle time (sec)	3,3	4,2	5,6
Number of cycles (n/min)	18	14	11
Oil flow (l/min)	250	350	400

Compactors



Optional:

HYDRAULIC ROTATION

Model	C-2D	C-3D	C-4C	C-6C	C-8C	C-10C	C-12C
Excavator weight (t)	2,5 - 5,5	3 - 8	4,5 - 11,5	7 - 20	14 - 34	27 - 45	35 - 63,5
Impulse force (kg)	1600	2700	3600	7300	11000	15450	20400
Cycles per min. (n/min)	2400	2200	2100	2200	2200	2200	2200
Working pressure (MPa)	10,5 - 14	13,5 - 17	11,7 - 15	12,5 - 16	14 - 17	14 - 17	14 - 17
Oil flow (l/min)	42 - 49	53 - 72	68 - 83	106 - 125	145 - 160	150 - 210	210 - 265
Dim. baseplate (mm)	320 x 635	430 X 710	580 x 860	740 x 1020	860 x 1170	1020 x 1320	1140 x 1470
Weight (kg)	172	360	436	778	1056	1640	2030
Height (mm)	711	737	762	990	1145	1270	1397
Width (mm)	320	432	584	736	860	1016	1144

Model	C-3DR	C-4CR	C-6CR	C-8CR
Weight (kg)	370	475	890	1158
Height (mm)	783	825	979	1069
Rotator oil flow (l/min)	6 - 70	6 - 70	6 - 70	6 - 70
Max rotator pressure (MPa)	- 32	- 32	- 32	- 32

Sheet Piler



Model	HP-45X	HP-75X	HP-75XB	HP-10L	HP-10S
Excavator weight (ton)	10 - 15	17 - 21	17 - 21	25 - 35	25 - 35
Weight (kg)	736	1050	1050	1250	1250
Frequency (c/min)	3000	2400	2400	2400	2400
Working pressure (MPa)	15	12	15	16	16
Oil flow (l/min)	-120	-200	-160	-240	-200
Vibration force (kN)	82	104	104	173	173
Length (mm)	1780	1910	1910	1970	1970
Chuck opening (mm)	35	40	40	40	40
Chuck oil flow (l/min)	10 - 20	10 - 20	10 - 20	10 - 20	10 - 20
Chuck pressure (MPa)	24	21	21	24	24

X-Y-Z Concept



Model	X-1	Y-25	Z-1	Z-2	Z-3
Excavator weight (ton)	1,3 - 2,0	1,2 - 2,2	1,3 - 1,5	2,0 - 2,7	3,0 - 3,5
Weight (kg)	130	134	110	195	280
Max. jaw opening (mm)	260	-	304	355	420
Working pressure (MPa)	21	14	21	21	27
Oil flow (l/min)	20 - 30	30	20 - 30	40 - 60	50 - 72
Force at tip (kN)	240	-	56	70	120
Width scrape plate (mm)	-	400	-	-	-
Vibration force (kN)	-	5	-	-	-
Frequency (Hz)	-	33	-	-	-

SG-Serie



Model	SG-110
Excavator weight (ton)	12 - 20
Weight (kg)	1325
Max. jaw opening (mm)	2120
Width (mm)	680
Opening / Closing	
Working pressure (MPa)	25 - 35
Oil flow (l/min)	60 - 100
Rotation	
Working pressure (MPa)	10 - 14
Oil flow (l/min)	20 - 30
Closing force (kN)	50

**HYDRAULIC
HAMMERS**



PULVERIZERS



SHEET PILERS



CRUNCHERS



STEEL SHEARS



CRUSHERS



X-Y-Z CONCEPT



**DEMOLITION
GRABS**



COMPACTORS



**MULTI-
PROCESSORS**



NPK Europe (Holland) BV

P. O. Box 30157

3001 DD Rotterdam

The Netherlands

Tel: +31 10 205 1710

Fax: +31 10 205 1715

E-mail: info@npke.nl

NPK®
www.npke.eu