

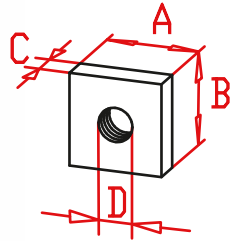


Accessories

Square nut



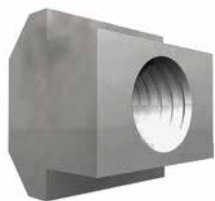
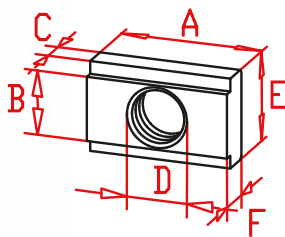
DIN 562



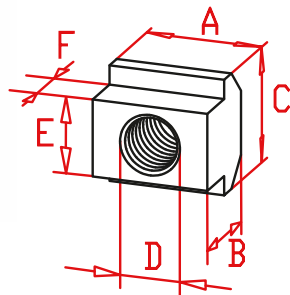
Slide nuts position refer to chapter 2.2 page 3
Material: galvanized steel

| Code-No. | Type | A | B | C | D |
|----------|------|----|----|-----|------|
| 02708 | M 4 | 7 | 7 | 2,2 | M 4 |
| 02710 | M 5 | 8 | 8 | 2,7 | M 5 |
| 02715 | M 6 | 10 | 10 | 3,2 | M 6 |
| 02714 | M 8 | 13 | 13 | 4 | M 8 |
| 02713 | M 10 | 17 | 17 | 5 | M 10 |
| 02721 | M 10 | 25 | 20 | 8 | M 10 |

T-nut



DIN 508

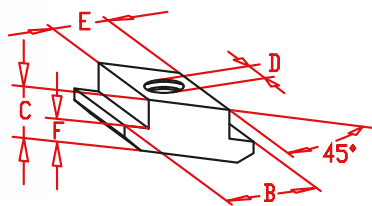


Slide nuts position refer to chapter 2.2 page 3
Material: galvanized steel

| Code-No. | Type | A | B | C | D | E | F |
|----------|------|----|-----|-----|------|-----|-----|
| 02717 | M3 | 8 | 4,2 | 2,1 | M 3 | 6,9 | 4,3 |
| 02739 | M4 | 10 | 4,2 | 2,1 | M 4 | 6,9 | 3,3 |
| 02742 | M 5 | 12 | 5,3 | 3 | M 5 | 8 | 4 |
| 02709 | M 5 | 14 | 8,1 | 4,5 | M 5 | 14 | 6 |
| 02716 | M 6 | 14 | 8,1 | 4,5 | M 6 | 14 | 6 |
| 02718 | M 8 | 18 | 8,1 | 4,5 | M 8 | 14 | 6 |
| 02719 | M10 | 22 | 8,1 | 4,5 | M 10 | 14 | 6 |
| 02730 | M 6 | 13 | 10 | 4 | M 6 | 15 | 8 |
| 02731 | M 8 | 13 | 10 | 4 | M 8 | 15 | 8 |

| Code-No. | Type | A | B | C | D | E | F |
|----------|------|----|----|----|------|----|----|
| 02734 | M 5 | 10 | 8 | 10 | M 5 | 6 | 4 |
| 02735 | M 6 | 13 | 10 | 13 | M 6 | 8 | 4 |
| 02736 | M 8 | 15 | 12 | 15 | M 8 | 10 | 6 |
| 02720 | M 10 | 18 | 14 | 18 | M 10 | 12 | 7 |
| 02722 | M 12 | 22 | 16 | 22 | M 12 | 14 | 8 |
| 02737 | M 16 | 28 | 20 | 28 | M 16 | 18 | 10 |

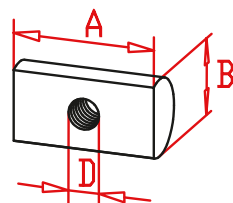
Rhombus nut



Slide nuts position refer to chapter 2.2 page 3
Material: galvanized steel

| Code-No. | Type | B | C | D | E | F |
|----------|------|----|---|-----|----|-----|
| 02732 | M 8 | 15 | 9 | M 8 | 10 | 4,2 |
| 02733 | M 6 | 15 | 9 | M 6 | 10 | 4,2 |
| 02760 | M 5 | 10 | 8 | M 5 | 6 | 4 |

Half round nut

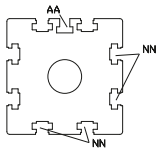


For guide body profile EL, ML, QL / QS and for fastening of jointing and mounting blocks. Material: galvanized steel

| Size | Code-No. | Type | A | B | D |
|--------|----------|------|----|----|--------|
| 30 | 02724 | M 3 | 28 | 5 | 2x M 3 |
| 40 | 02725 | M 5 | 14 | 6 | M 5 |
| 60 (S) | 02726 | M 6 | 18 | 10 | M 6 |
| 80 (S) | 02728 | M 8 | 22 | 12 | M 8 |
| 100 | 02729 | M 8 | 22 | 16 | M 8 |
| 125 | 02723 | M10 | 25 | 20 | M10 |

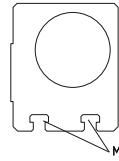
T-nut allocation

Bearing block profile EL



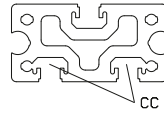
| Size | T-slot nut slot AA Code No. | T-slot nut slot NN Code No. |
|--------|-----------------------------|-----------------------------|
| 30 | 02715 | 02715 |
| 40 | 02710 | 02715 |
| 60 (S) | 02710 | 02718 |
| 80 (S) | 02714 | 02719 |
| 100 | 02714 | 02720 |
| 125 | 02736 | 02722 |

Bearing block profile ELZ



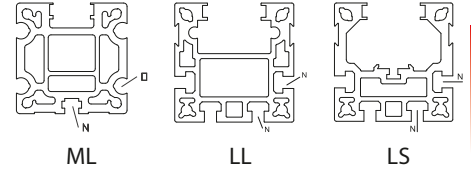
| Size | T-slot nut slot M Code No. |
|--------|----------------------------|
| 30 | 02710 |
| 40 | 02735 |
| 60 (S) | 02731 / 02719 |
| 80 (S) | 02736 |
| 100 | 02720 |
| 125 | 02722 |

Guide body profile E



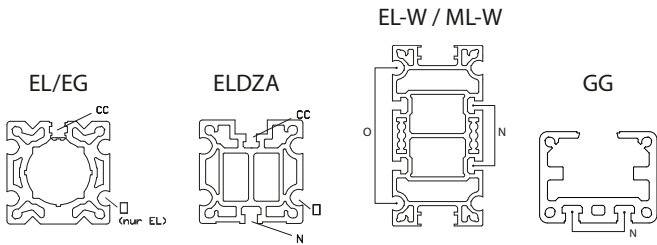
| Size | T-slot nut slot CC Code No. |
|------|-----------------------------|
| 40 | 02730 / 02731 |
| 60 | 02730 / 02731 |
| 80 | 02730 / 02731 |

Guide body profile ML/LL/LS/ALL

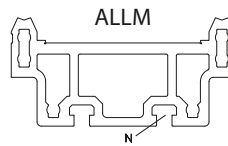


| Type | T-slot nut slot N Code No. | T-slot nut slot O Code No. |
|------------|----------------------------|----------------------------|
| ML 60 (S) | 02716 / 02718 | 02726 |
| ML 80 (S) | 02719 | 02728 |
| ML 100 | 02720 | 02729 |
| LL / LS 40 | 02708 | |
| LL / LS 60 | 02734 | |
| LL / LS 80 | 02735 | |
| ALLM 200 | 02737 | |

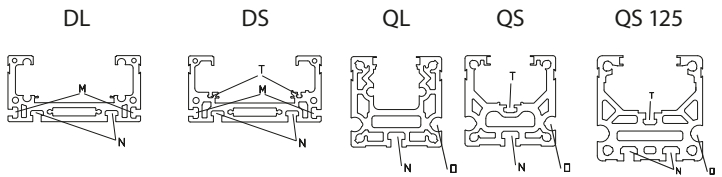
Guide body profile EL / EG



| Size | T-slot nut slot CC Code No. | T-slot nut slot O Code No. | T-slot nut slot N Code No. |
|------------------|-----------------------------|----------------------------|----------------------------|
| EL 30 | 02715 | 02724 | - |
| EL/EG 40 | 02718 | 02725 | - |
| EL/EG 60 | 02718 | 02726 | - |
| EL/EG 80(S) | 02718 | 02728 | - |
| EL 100 | 02721 | 02729 | - |
| EL 125 | 02721 | 02723 | - |
| ELDZA 60(S) | 02734 | 02726 | 02735 |
| ELDZA 80(S) | 02730 | 02728 | 02720 |
| ELDZA 100 | 02736 | 02729 | 02720 |
| EL-W/ML-W 60 (S) | - | 02726 | 02734 |
| GG 90 | - | - | 02736 |



Guide body profile DL/DS QL/QS

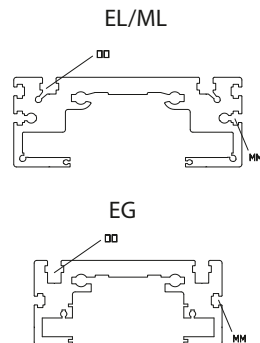


| Size | T-slot nut slot N Code No. | T-slot nut slot M Code No. | T-slot nut slot T* Code No. | T-slot nut slot O* Code No. |
|-----------|----------------------------|----------------------------|-----------------------------|-----------------------------|
| DL/DS 120 | 02735 | 02734 | 02717 | - |
| DL/DS 160 | 02736 | 02735 | 02739 | - |
| DL/DS 200 | 02720 | 02736 | 02735 | - |
| QL/QS 60 | 02734** | - | 02739 | 02726 |
| QL/QS 80 | 02735** | - | 02742 | 02728 |
| QL/QS 100 | 02720** | - | 02716 | 02729 |
| QS 125 | 02720 | - | 02736 | 02723 |

* only for DS/QS guide body profile
 ** not in QST/K guide body profile

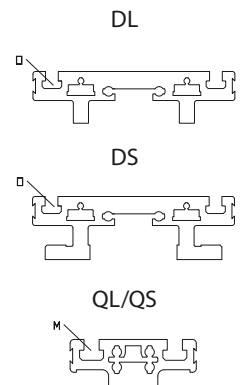
Carriage profile EL / EG

| Size | T-slot nut slot OO Code No. | T-slot nut slot MM Code No. |
|------|-----------------------------|-----------------------------|
| 30 | 02715 | - |
| 40 | 02716 / 02709 | - |
| 60 | 02718 | - |
| 60 S | 02736 | - |
| 80 | 02718 / 02719 | 02715 |
| 80S | 02736 | 02735 |
| 100 | 02720 | 02713 |
| 125 | 02722 | 02720 |



Carriage profile DL / DS / QL / QS

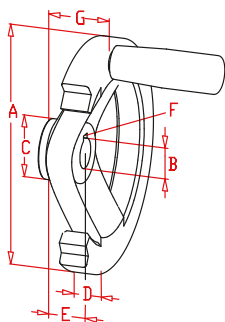
| Size | T-slot nut slot O Code No. | T-slot nut slot M Code No. |
|-----------|----------------------------|----------------------------|
| DL/DS 120 | 02735 | - |
| DL/DS 160 | 02736 | - |
| DL/DS 200 | 02720 | - |
| QL/QS 60 | - | 02735 |
| QL/QS 80 | - | 02736 |
| QL/QS 100 | - | 02720 |
| QS 125 | - | 02722 |



Slide nut dimensions refer to chapter 2.2 page 2

Handwheel with keyway and locking screw

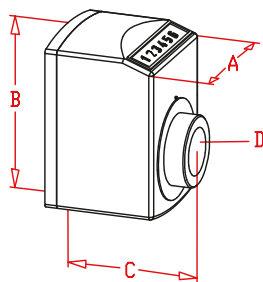
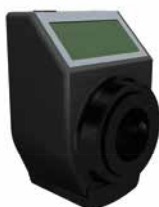
2.2



A plastic coated aluminium handwheel with a matt black finish. Equipped with a black handle.

| Code-No. | Type | A | B | C | D | E | F | G |
|----------|------|-----|----|----|------|----|-----|----|
| 00050 | 30 | 70 | 6 | 17 | 13 | 15 | - | 20 |
| 00100 | 40 | 100 | 10 | 29 | 14,5 | 17 | 3x3 | 30 |
| 00160 | 60 | 140 | 14 | 36 | 16,5 | 19 | 5x5 | 36 |
| 00200 | 80 | 200 | 18 | 42 | 20,5 | 24 | 6x6 | 45 |
| 00222 | 100 | 200 | 22 | 42 | 20,5 | 24 | 6x6 | 45 |

Positional indicator



Code No. 00265 - 00268
electronic indicator

SH-FH

SV-FV



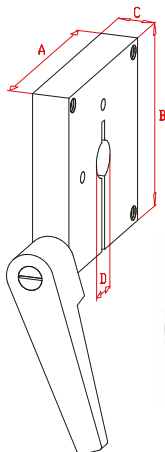
Shell made of polyamide orange. Ambient temperature 80°C. Any fitting position possible. Numeral height 6 mm. Accuracy of reading 0,1 mm.

| Code-No. | Size | AxBxC | D | Type | pitch (mm) |
|----------|---|----------|-------------------|------|------------|
| 00231.. | EL / EG 30 | 33x47x31 | 6 | SH | 2,5 od. 3 |
| 00232.. | | 33x47x31 | 6 | FH | 2,5 od. 3 |
| 00233.. | | 33x47x31 | 6 | SV | 2,5 od. 3 |
| 00234.. | | 33x47x31 | 6 | FV | 2,5 od. 3 |
| 00241.. | EL / EG 40, 60, 80 | 48x67x51 | 12,17,20 | SH | 4 od. 8 |
| 00242.. | | 48x67x51 | 12,17,20 | FH | 4 od. 8 |
| 00243.. | | 48x67x51 | 12,17,20 | SV | 4 od. 8 |
| 00244.. | | 48x67x51 | 12,17,20 | FV | 4 od. 8 |
| 00251.. | QS 60, 80 | 48x67x51 | 12,17,20 | SH | 5 od. 10 |
| 00252.. | DL / DS 120, 160 | 48x67x51 | 12,17,20 | FH | 5 od. 10 |
| 00253.. | | 48x67x51 | 12,17,20 | SV | 5 od. 10 |
| 00254.. | | 48x67x51 | 12,17,20 | FV | 5 od. 10 |
| 00261.. | EL 100, 125 QS 100 DL 200 | 56x75x64 | 22,25,30 | SH | 6 od. 12 |
| 00262.. | | 56x75x64 | 22,25,30 | FH | 6 od. 12 |
| 00263.. | | 56x75x64 | 22,25,30 | SV | 6 od. 12 |
| 00264.. | | 56x75x64 | 22,25,30 | FV | 6 od. 12 |
| 00265.. | EL / EG 40, 60, 80, 100, 125 QS 60, 80, 100 DL / DS 120, 160, 200 | 48x76x39 | 12,17,20,22,25,30 | SH | 0 - 14 |
| 00266.. | | 48x76x39 | 12,17,20,22,25,30 | FH | 0 - 14 |
| 00267.. | | 48x76x39 | 12,17,20,22,25,30 | SV | 0 - 14 |
| 00268.. | | 48x76x39 | 12,17,20,22,25,30 | FV | 0 - 14 |

0024108

Sample ordering code: size 40, 8 mm pitch increasing horizontal.

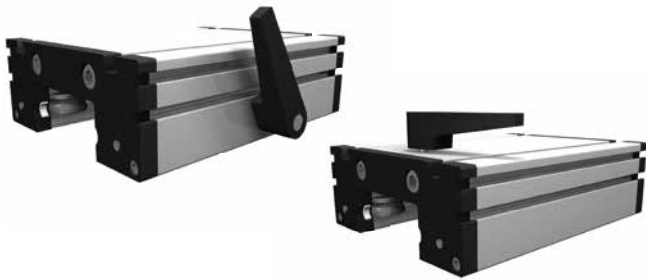
Spindle clamp EL / EG, DL / DS / QST/K



Black anodized aluminium, steel hand lever.

| Code-No. | Type | A | B | C | D | Handlever |
|----------|---------------------|-----|-----|----|----|-----------|
| 00291 | EL/EG 30 | 43 | 50 | 10 | 6 | M 6 |
| 00292 | EL/EG 40 | 58 | 70 | 10 | 12 | M 6 |
| 00293 | EL/EG 60 | 80 | 80 | 15 | 17 | M 8 |
| 00294 | EL/EG 80 | 100 | 100 | 20 | 20 | M10 |
| 00295 | E 100 | 130 | 130 | 20 | 25 | M10 |
| 00296 | E 125 | - | - | - | - | - |
| 00283 | DL/DS 120 | 62 | 80 | 15 | 12 | M 6 |
| 00284 | DL/DS 160 | 80 | 90 | 20 | 17 | M 8 |
| 00285 | DL/DS 200 QS 100 | 90 | 99 | 20 | 25 | M 8 |
| 00286 | QS 80 | 80 | 90 | 20 | 17 | M 8 |
| 00287 | QS 60 | 62 | 80 | 15 | 12 | M 6 |

Carriage clamp EL / ML / EG

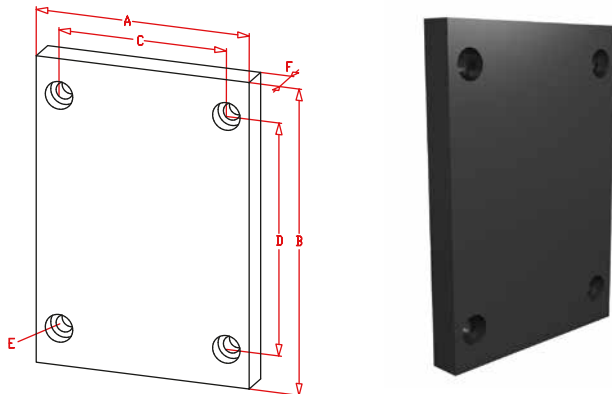


Carriage with carriage clam. Carriage length can be chosen as required. Depending on type of drive (spindle or belt) the position of clamp can be different. Dimensions by inquiry.

| Code-No. | Type |
|----------|-------|
| 00311 | EG 30 |
| 00312 | EG 40 |
| 00313 | EG 60 |
| 00314 | EG 80 |
| 00301 | EL 30 |

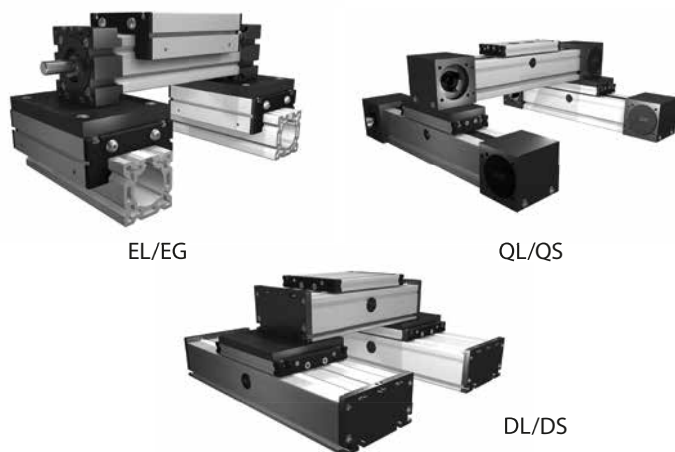
| Code-No. | Type |
|----------|-----------|
| 00302 | EL 40 |
| 00303 | EL/ML 60 |
| 00304 | EL/ML 80 |
| 00305 | EL/ML 100 |
| 00306 | EL 125 |

Assembly plate



Assembly plate, anodized aluminium, enables various units to be assembled in a simple manner when combinations of linear units are to be used. Complete with screws and slide-nuts. Tapped holes can be made on request.

| Code-No. | Type | A | B | C | D | E for | F |
|----------|------------|-----|-----|-----|-----|-------|----|
| 00940 | EG 40 | 70 | 100 | 52 | 52 | M 6 | 12 |
| 00960 | EG 60 | 100 | 144 | 80 | 126 | M 8 | 15 |
| 00980 | EG 80 | 140 | 170 | 110 | 147 | M10 | 15 |
| 00935 | EL 30 | 70 | 70 | 56 | 56 | M 6 | 10 |
| 00945 | EL 40 | 100 | 100 | 66 | 84 | M 6 | 12 |
| 00965 | EL/ML 60 | 144 | 144 | 96 | 126 | M 8 | 15 |
| 00964 | EL/ML 60 S | 170 | 170 | 108 | 152 | M 8 | 15 |
| 00985 | EL/ML 80 | 170 | 170 | 117 | 150 | M10 | 15 |
| 00984 | EL/ML 80 S | 190 | 190 | 126 | 172 | M 8 | 15 |
| 00915 | EL/ML 100 | 230 | 270 | 155 | 248 | M10 | 20 |
| 00925 | EL 125 | 295 | 335 | 200 | 285 | M12 | 20 |
| 00966 | DL/DS 120 | 120 | 140 | 96 | 122 | M 6 | 12 |
| 00986 | DL/DS 160 | 160 | 180 | 130 | 162 | M 8 | 15 |
| 00916 | DL/DS 200 | 200 | 240 | 160 | 218 | M 10 | 20 |
| 00967 | QL 60 | 60 | 140 | 36 | 122 | M 6 | 12 |
| 00987 | QL 80 | 80 | 180 | 50 | 162 | M 8 | 15 |
| 00917 | QL 100 | 100 | 240 | 66 | 218 | M10 | 20 |
| 00926 | QS 60 | 60 | 165 | 36 | 147 | M6 | 12 |
| 00928 | QS 80 | 80 | 216 | 50 | 198 | M8 | 15 |
| 00911 | QS 100 | 100 | 248 | 66 | 226 | M10 | 20 |
| 00921 | QS 125 | 125 | 270 | 82 | 244 | M12 | 20 |
| 00970 | LL 40 | 34 | 120 | 10 | 63 | M4 | 12 |
| 00968 | LL 60 | 54 | 175 | 18 | 93 | M6 | 12 |
| 00969 | LS 60 | 54 | 116 | 18 | 93 | M6 | 12 |
| 00988 | LL 80 | 74 | 250 | 18 | 90 | M6 | 12 |
| 00989 | LS 80 | 74 | 149 | 18 | 120 | M6 | 12 |

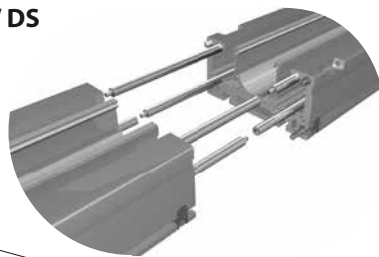


EL/EG

QL/QS

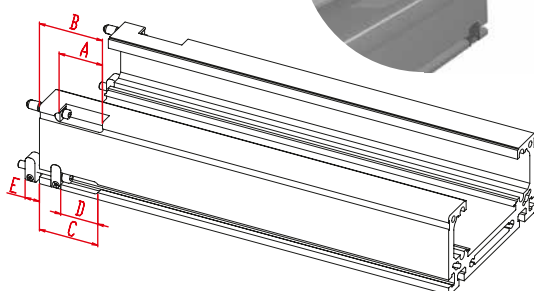
DL/DS

Connecting profiles DL / DS



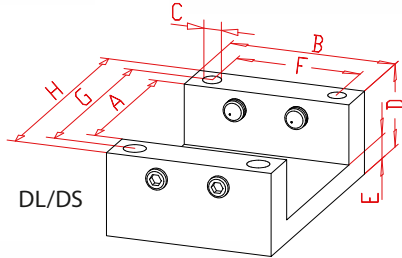
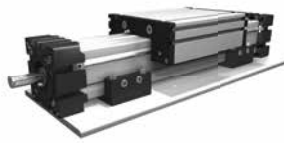
The millings for the extensions are directly incorporated into the profile, so that there is only one transition point in the profile. The guide shafts or rail guides are jointed at a different position. To ensure that even the smallest tolerance deviations are avoided, only pieces of the same lots are joined to each other.

| Code-No. | Type | A | B | C | D | E |
|----------|--------|------|----|------|------|-------|
| 03090_02 | DS 120 | 47,5 | 66 | 78 | 56 | 12 |
| 03090_01 | DL 120 | 47,5 | 66 | 78 | 56 | 12 |
| 03091_02 | DS 160 | 39 | 58 | 78,5 | 56,5 | 12 |
| 03091_01 | DL 160 | 39 | 58 | 78,5 | 56,5 | 12 |
| 03092_02 | DS 200 | 53 | 77 | 71,3 | 45,3 | 17,55 |
| 03092_01 | DL 200 | 53 | 77 | 71,3 | 45,3 | 17,55 |

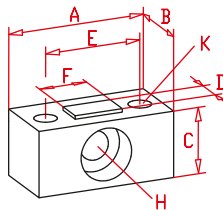
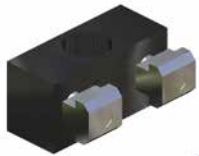


Support and mounting block

EG



DL/DS



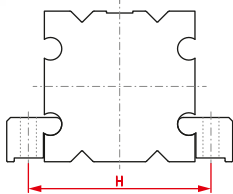
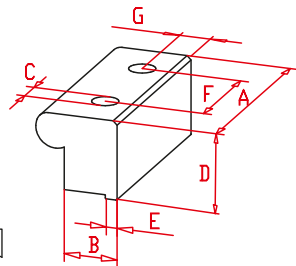
Black anodized aluminium, for mounting and for supporting long units. These components can be ready mounted on the units by us to customer's specification. Mounting can be clear or tapped holes and slide-nuts.

| Code-No. | Type | A | B | C | D | E | F | G | H |
|----------|-------|----|----|------|------|----|--------|-----|-----|
| 03043 | EG 40 | 40 | 40 | 6,5 | 24,0 | 9 | 1 hole | 50 | 60 |
| 03063 | EG 60 | 60 | 60 | 9,0 | 35,0 | 11 | | 75 | 90 |
| 03083 | EG 80 | 80 | 80 | 10,5 | 39,0 | 11 | | 100 | 120 |

| Code-No. | Type | A | B | C | D | E | F | G | H for | K for |
|----------|-----------|----|----|----|----|----|----|-----|-------|-------|
| 03001 | DL/DS 120 | 34 | 17 | 14 | 6 | 22 | 10 | 134 | M6 | M5 |
| 03002 | DL/DS 160 | 40 | 20 | 19 | 8 | 28 | 14 | 179 | M8 | M6 |
| 03003 | DL/DS 200 | 50 | 30 | 24 | 10 | 34 | 18 | 224 | M10 | M8 |



Mounting profile EL / ML / Q / L

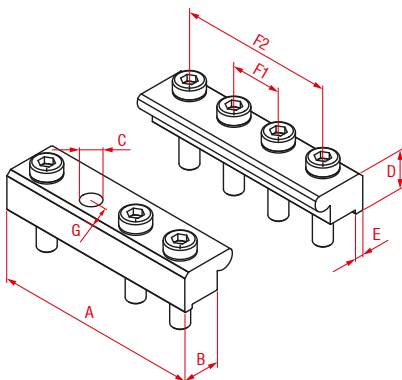


Black anodized aluminium, for mounting. Mounting can be clear or tapped holes. Pair (without screws)

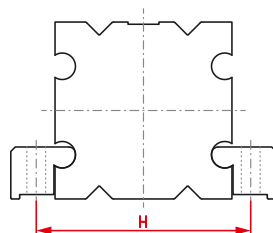
| Code-No. | Type | A | B | Ø C | D | E | F | G | H |
|----------|-------------|-----|------|------|------|---|----|------|-----|
| 03039 | EL 30 | 24 | 11,5 | 5,5 | 10 | 3 | 12 | 6,5 | 41 |
| 03049 | EL 40 | 32 | 15,5 | 6,6 | 13 | 4 | 16 | 9 | 54 |
| 03069 | EL/ML/Q 60 | 48 | 17,5 | 9 | 18 | 4 | 24 | 9,5 | 77 |
| 03089 | EL/ML/Q 80 | 64 | 19,5 | 9 | 23,5 | 4 | 32 | 11,5 | 97 |
| 03019 | EL / Q 100 | 80 | 21,5 | 11 | 30,5 | 4 | 40 | 12 | 120 |
| 03029 | EL / QS 125 | 100 | 27 | 13,5 | 40 | 6 | 50 | 15,5 | 149 |
| 03007 | L 40 | 32 | 15,5 | 6,6 | 16 | 4 | 16 | 9 | 53 |
| 03009 | L 60 | 64 | 19,5 | 9 | 22,8 | 4 | 32 | 11,5 | 76 |
| 03099 | L 80 | 64 | 19,5 | 9 | 25,5 | 4 | 32 | 11,5 | 97 |

Double mounting profile EL / ML / Q / L

Black anodized aluminium. For mounting and joining body profiles longer than standard. Mounting can be clear or tapped holes. Pair (without screws)

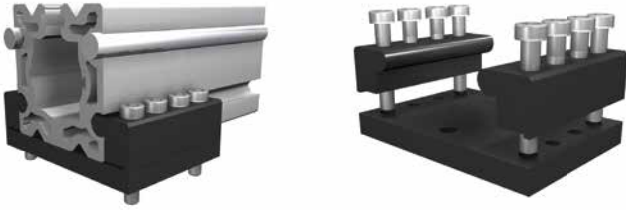


| Code-No. | Type | A | B | C | D | E | F1 | F2 | G | H |
|----------|------------------|-----|------|------|------|---|----|-----|------|-----|
| 03039-2 | EL 30 | 48 | 11,5 | 5,5 | 10 | 3 | 12 | 36 | 6,5 | 41 |
| 03049-2 | EL 40 | 64 | 15,5 | 6,6 | 13 | 4 | 16 | 48 | 9 | 54 |
| 03069-2 | EL / ML / Q 60 | 96 | 17,5 | 9 | 18 | 4 | 24 | 72 | 9,5 | 77 |
| 03089-2 | EL / ML / Q 80 | 128 | 19,5 | 9 | 23,5 | 4 | 32 | 96 | 11,5 | 97 |
| 03019-2 | EL / QL / QS 100 | 160 | 21,5 | 11 | 30,5 | 4 | 40 | 120 | 12 | 120 |
| 03029-2 | EL / QS 125 | 200 | 27,0 | 13,5 | 40 | 6 | 50 | 150 | 15,5 | 149 |
| 03007-2 | L 40 | 64 | 15,5 | 6,6 | 16 | 4 | 16 | 48 | 9 | 53 |
| 03009-2 | L 60 | 128 | 19,5 | 9 | 23,5 | 4 | 32 | 96 | 11,5 | 76 |
| 03099-2 | L 80 | 128 | 19,5 | 9 | 23,5 | 4 | 32 | 96 | 11,5 | 97 |

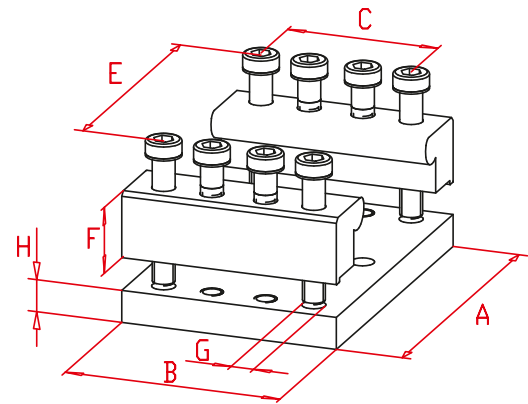


Mounting block EL / EH / ML / Q

Black anodized aluminium, for mounting and for supporting long units. These components can be ready mounted on the units by us to customer's specification. Mounting can be clear or tapped holes and slide-nuts.



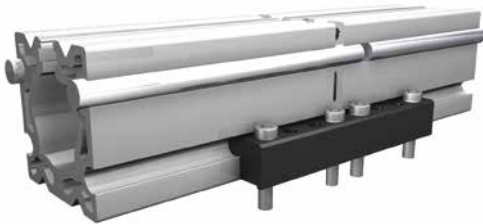
* only 1 hole



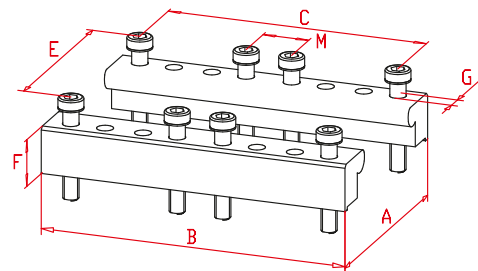
| Code-No. | Type | A | B | C | E | F | G | H |
|----------|----------------|-----|-----|----|-----|------|------|------|
| 030301 | EL 30 | 54 | 30 | * | 38 | 10 | 4,2 | 6 |
| 030401 | EL/EH 40 | 72 | 40 | * | 50 | 13 | 6,4 | 9 |
| 030601 | EL/EH/ML/Q 60 | 96 | 60 | * | 75 | 18 | 8,5 | 10,8 |
| 030801 | EL/EH/ML/Q 80 | 120 | 80 | 60 | 100 | 23,5 | 10,5 | 10,8 |
| 030101 | EL/EH/ML/Q 100 | 144 | 100 | 70 | 120 | 30,5 | 10,5 | 14,8 |
| 030201 | EL/EH/QS 125 | 180 | 125 | 85 | 150 | 40 | 11 | 20 |
| 030071 | L 40 | 71 | 40 | 26 | 53 | 16 | 6,5 | 9 |
| 030091 | L 60 | 100 | 60 | * | 76 | 23,5 | 9 | 10,8 |
| 030991 | L 80 | 120 | 80 | 60 | 100 | 23,5 | 10,5 | 10,8 |

Jointing profile EL / ML / Q

Black anodized aluminium. For joining body profiles longer than standard (without screws).

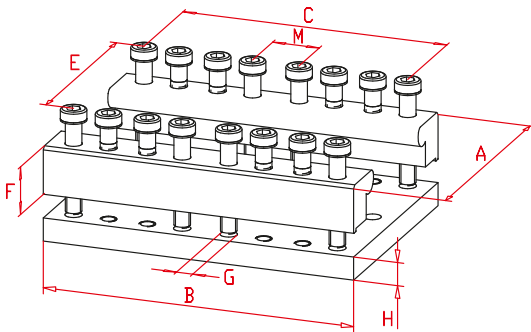


| Code-No. | Type | A | B | C | E | F | G | M |
|----------|-------------|-----|-----|-----|-----|------|------|----|
| 030312 | EL 30 | 54 | 60 | 50 | 38 | 10 | 4,2 | 10 |
| 030412 | EL 40 | 72 | 80 | 66 | 50 | 13 | 6,4 | 14 |
| 030612 | EL/ML/Q 60 | 96 | 120 | 100 | 75 | 18 | 8,5 | 20 |
| 030812 | EL/ML/Q 80 | 120 | 160 | 140 | 100 | 23,5 | 10,5 | 20 |
| 030112 | EL/ML/Q 100 | 144 | 200 | 170 | 120 | 30,5 | 10,5 | 30 |
| 030212 | EL/QS 125 | 180 | 250 | 210 | 150 | 40 | 11 | 40 |



Jointing block EL / ML / Q / L

2.2

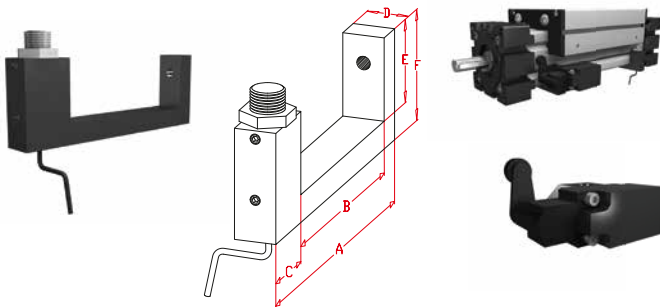


Black anodized aluminium, for jointing, mounting and supporting long units. These components can be ready mounted on the units by us to customer's specification. Mounting can be clear or tapped holes and slide-nuts.



| Code-No. | Type | A | B | C | E | F | G | H | M |
|----------|-------------|-----|-----|-----|-----|------|------|------|----|
| 030311 | EL 30 | 54 | 60 | 50 | 38 | 10 | 4,2 | 6 | 10 |
| 030411 | EL 40 | 72 | 80 | 66 | 50 | 13 | 6,4 | 9 | 14 |
| 030611 | EL/ML/Q 60 | 96 | 120 | 100 | 75 | 18 | 8,5 | 10,8 | 20 |
| 030811 | EL/ML/Q 80 | 120 | 160 | 140 | 100 | 23,5 | 10,5 | 10,8 | 20 |
| 030111 | EL/ML/Q 100 | 144 | 200 | 170 | 120 | 30,5 | 10,5 | 14,8 | 30 |
| 030211 | EL/QS 125 | 180 | 250 | 210 | 150 | 40 | 11 | 20 | 40 |
| 030072 | L 40 | 71 | 80 | 66 | 53 | 16 | 6,5 | 9 | 14 |
| 030092 | L 60 | 100 | 120 | 100 | 76 | 23,5 | 9 | 10,8 | 20 |
| 030992 | L 80 | 120 | 160 | 140 | 100 | 23,5 | 10,5 | 10,8 | 20 |

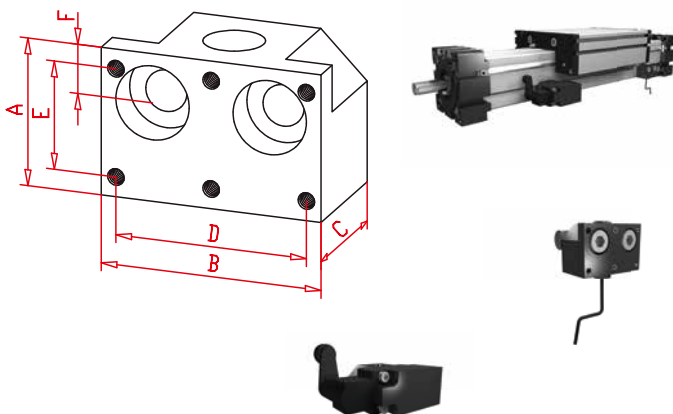
Proximity / limit switch holder EG



Black anodized aluminium bracket, fixed by grub screws. Position along the length of the units is adjustable. Fixing holes for proximity and limit switches are provided.

| Code-No. | Type | A | B | C | D | E | F | Drill hole |
|----------|-------|-----|----|----|----|----|----|------------|
| 01340 | EG 40 | 72 | 40 | 24 | 15 | 19 | 28 | 8,2 |
| 01360 | EG 60 | 92 | 60 | 24 | 15 | 26 | 35 | 12,2 |
| 01380 | EG 80 | 114 | 81 | 24 | 15 | 30 | 40 | 12,2 |

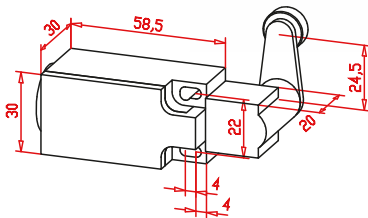
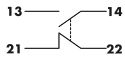
Proximity / limit switch holder EL



Black anodized aluminium bracket, fixed by screws into with half-round nuts in the body half-round-slots, hence position axially adjustable. Fixing holes for proximity and limit switches are provided. Complete with screws and half-round nuts.

| Code-No. | Type | A | B | C | D | E | F | Drill hole | |
|----------|----------|-----------------------------|----|----|----|----|------|------------|--|
| 01331 | EL 30 | 12 | 30 | 12 | - | - | 6 | 8,2 | |
| 01341 | EL 40 | 28 | 32 | 25 | 26 | 22 | 8 | 8,2 | |
| 01361 | EL 60 | 30 | 40 | 25 | 32 | 22 | 11 | 12,2 | |
| 01381 | EL 80 | 30 | 45 | 25 | 39 | 22 | 10 | 12,2 | |
| 01311 | EL 100 | 40 | 55 | 20 | 49 | 22 | 12 | 12,2 | |
| 01321 | EL 125 | 45 | 60 | 25 | 52 | 22 | 12,5 | 12,2 | |
| 01300 | EL60-125 | Reducing sleeve Ø 12 to Ø 8 | | | | | | | |

Limit switch

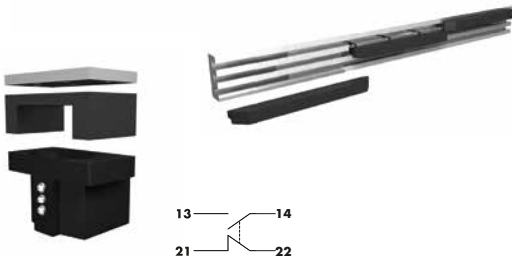


Fully insulated thermoplastic switch with adjustable operation lever. The operation device can be turned by 90°, the lever can be turned to engage by 360°.

| | |
|-------------------------------------|-------------------|
| Max. voltage | 380 V |
| Max. constant current | 6 A |
| Max. current at make | 16 A |
| Duty classification | max.6000/h |
| Mechanical lifetime 1×10^7 | |
| Operating repeatability | $\pm 0,01$ |
| Transit time/snap switch | ca. 10 ms |
| Protection class | IP 65 (DIN 40050) |
| Working temperature | -30° C to +80° C |

| Code-No. | choice |
|----------|--------------|
| 01101 | standard |
| 01101ex | Version ATEX |

Limit switch



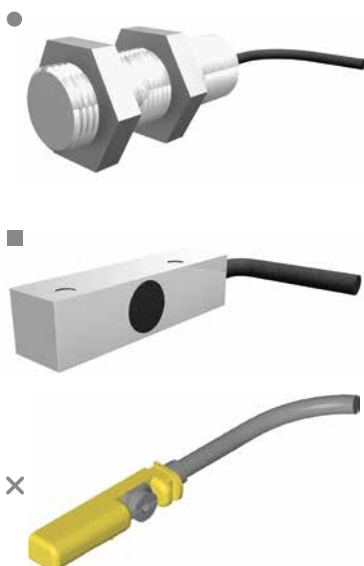
3 electromechanical switches in a row.

| | |
|--------------------------|-------------------|
| Nominal voltage | 250 V |
| Cont. current | 6 A |
| Switch rate | max.300/min. |
| Mech. Lifetime | >30 Mio. |
| Repeatability | $\pm 0,01$ mm |
| Transit time/snap switch | ca. 10 ms |
| Protection class | IP 67 (DIN 60529) |
| Working temperature | -5° C bis +80° C |

| Code-No. | choice |
|----------|-----------------|
| 01105 | switch system * |

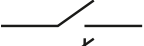
* consisting of 2 cam ledges and 3 cams

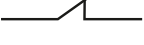
Proximity switch



Inductive proximity switches. Protection class IP67

| Code-No. | Type | Switching distance | Voltage | Output | Function |
|----------|-------|--------------------|-------------|--------|----------|
| ● 01003 | M8 | 1 mm | 10 - 30 VDC | 200 mA | PNP NC |
| ● 01004 | M8 | 1 mm | 10 - 30 VDC | 200 mA | PNP NO |
| ● 01001 | M12 | 2 mm | 10 - 30 VDC | 200 mA | PNP NC |
| ● 01002 | M12 | 2 mm | 10 - 30 VDC | 200 mA | PNP NO |
| ■ 010014 | Q 8x8 | 2 mm | 10 - 35 VDC | 200 mA | PNP NC |
| ■ 010013 | Q 8x8 | 2 mm | 10 - 35 VDC | 200 mA | PNP NO |
| × 010142 | EHT/K | --- | 10 - 30 VDC | 150 mA | PNP NO |
| × 010143 | EHT/K | --- | 10 - 30 VDC | 150 mA | PNP NC |

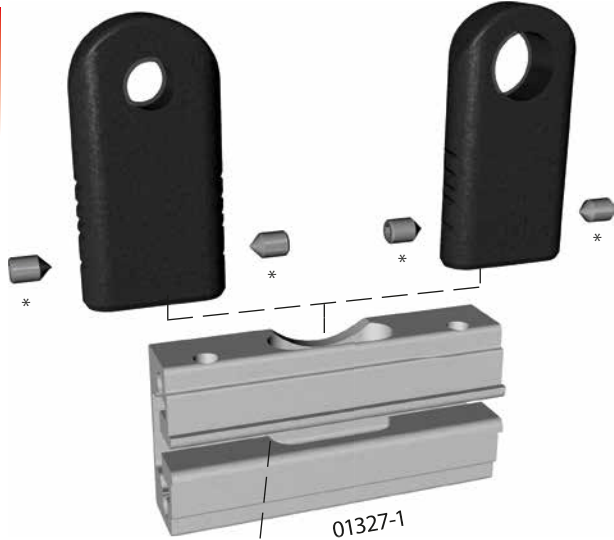
PNP NO (normally open) = 

PNP NC (normally closed) = 

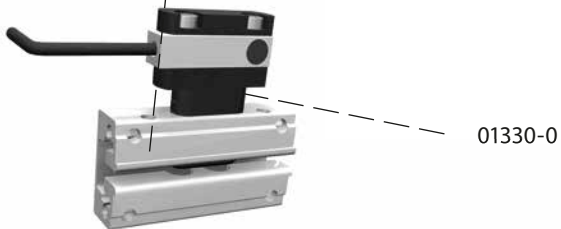
Proximity / limit switch holder
DL / DS / QL / QS / LL / LS

01328-0

01329-0

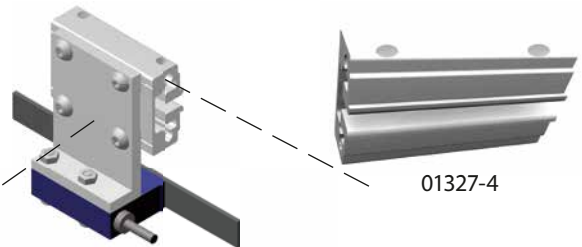


01327-1

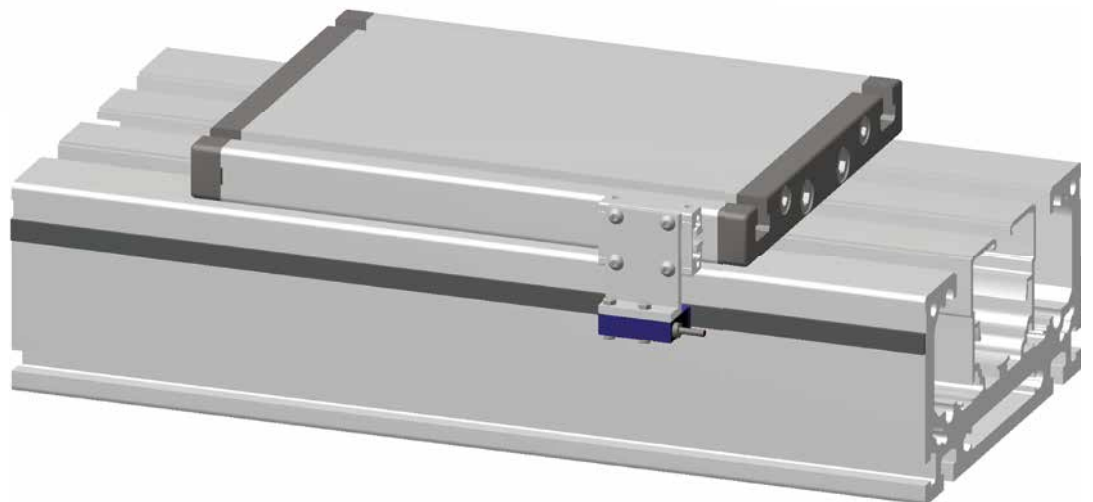
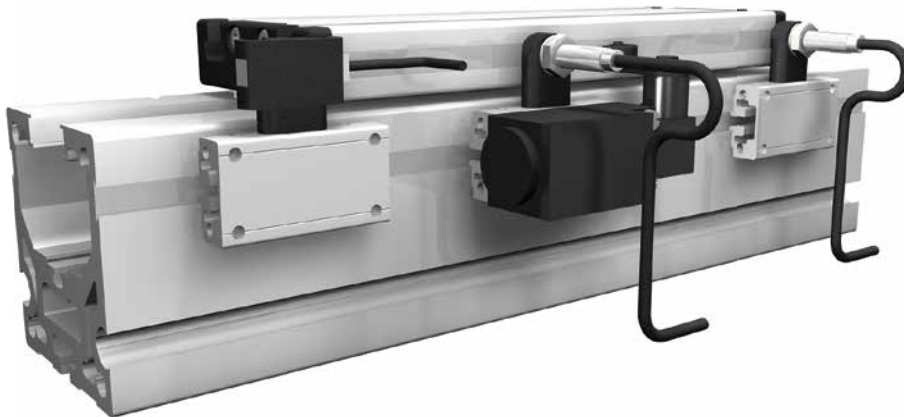


01330-0

01335-



01327-4



| Code-Nr. | Type |
|----------|--|
| 01327-0 | Base holder for a limit switch |
| 01327-1 | Base holder for a proximity and a limit switch |
| 01327-4 | Base holder for a sensor bracket |
| 01328-0 | plug in holder for a proximity switch M8x1 |
| 01329-0 | plug in holder for a proximity switch M12x1 |
| 01330-0 | plug in holder for a proximity switch Q 8x8 |
| 01335-0 | Sensor holder DL/DS 120 / QL/QS 60 H = 46,5mm |
| 01335-1 | Sensor holder DL/DS 160 H = 50,5mm |
| 01335-2 | Sensor holder QL/QS 80 H = 52,5mm |
| 01335-3 | Sensor holder DL/DS 200 H = 48 mm |
| 01335-4 | Sensor holder QL/QS 100 H = 57 mm |

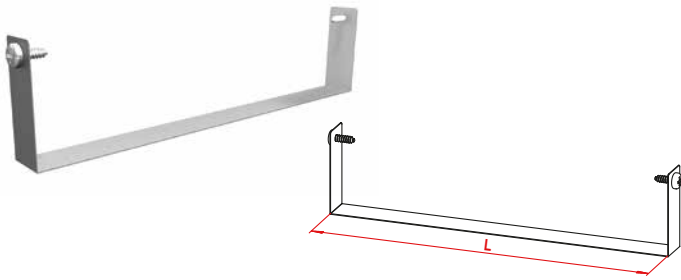
* stainless steel grub screws

Accessories

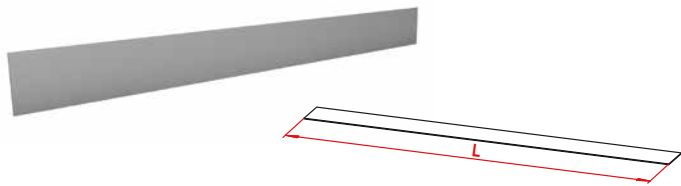
Activating strips | Bellows

2.2

Activating sheet EL / ML / EG



Activating sheet QL / QS - DL / DS



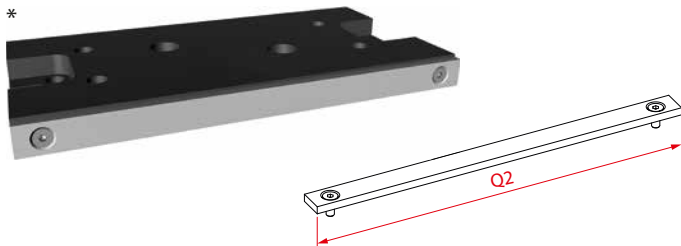
Activating strip LL / LS

only on combination with matching assembly plate*

*Assembly plate

LL 60 00968, **LL 80** 00988

LS 60 00969, **LS 80** 00989

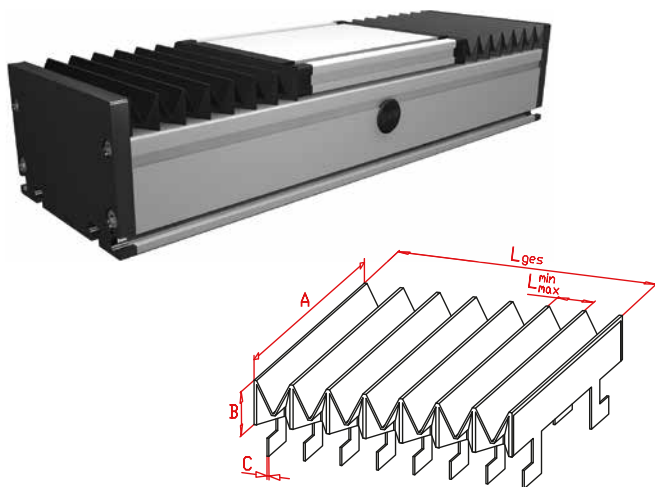


For external mounting proximity switches.

| Code-No. | Type | Length - L |
|----------|-----------|------------|
| 01000 | EL 30 | Q |
| 01005 | EL 40 | Q |
| 01006 | EL/ML 60 | Q |
| 01011 | EL/ML 60S | Q |
| 01007 | EL/ML 80 | Q |
| 01010 | EL/ML 80S | Q |
| 01008 | EL/ML 100 | Q |
| 01009 | EL 125 | Q |
| 010000 | EG 30 | Q |
| 010050 | EG 40 | Q - 7 |
| 010060 | EG 60 | Q - 9 |
| 010070 | EG 80 | Q - 11 |
| 01018 | DL/DS 120 | Q - 16 |
| 01017 | DL/DS 160 | Q - 20 |
| 01016 | DL/DS 200 | Q - 30 |
| 01030 | QL/QS 60 | Q - 12 |
| 01031 | QL/QS 80 | Q - 16 |
| 01032 | QL/QS 100 | Q - 20 |
| 01032 | QS 125 | Q - 30 |
| 010152 | LL/LS 40 | Q2 |
| 01015 | LL/LS 60 | Q2 |
| 01019 | LL/LS 80 | Q2 |

Q = Carriage length

Complete bellows DL / DS



Bellow ERA7815, max. 120°, bellow frame PVC.

| Code-No. | Type | A | B | C | Fold | |
|----------|-----------|-----|----|---|------------------|------------------|
| | | | | | L _{min} | L _{max} |
| 02901 | DL/DS 120 | 120 | 19 | 1 | 4 | 22 |
| 02902 | DL/DS 160 | 160 | 24 | 1 | 4 | 31 |
| 02903 | DL/DS 200 | 200 | 28 | 1 | 4 | 28 |

| | |
|-------|-----|
| 02902 | 500 |
|-------|-----|

Sample ordering code: Size 160, unit length L = 500 mm.



2.2

Motor adapter

Black anodized aluminium, can be designed for any motor. Simple assembly, accurate alignment.



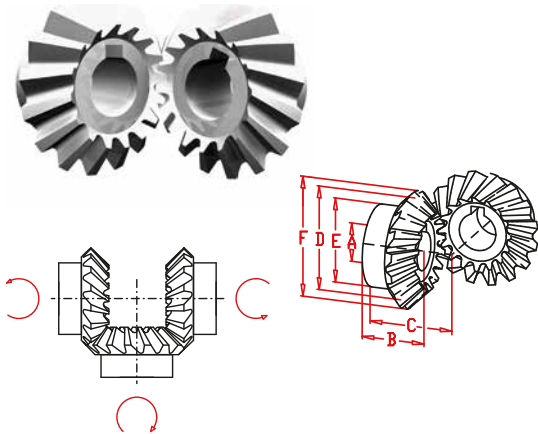
| Code-No. | Typ spindle |
|----------|--|
| 01531 | EL/EG 30 |
| 01541 | EL/EG 40 |
| 01561 | EL/ML/EG 60 / DL/DS 120 QS 60 |
| 01581 | EL/ML/EG 80 / DL/DS 160 QS 80/ GG/GDG90 |
| 01511 | EL/ML 100 DL/DS 200 QS 100 |
| 01521 | EL 125 |

| Code-No. | Typ belt-drive |
|----------|---|
| 01831 | EL 30 |
| 01832 | ELZI 30 / LL 40 |
| 01841 | EL 40 |
| 01842 | ELZI 40 |
| 01861 | EL/ML 60 / DL/DS 120 QL/QS 60 / LL/LS 60 |
| 01862 | ELZI 60 |
| 01881 | EL/ML 80 / DL/DS 160 QL/QS 80 |
| 01811 | EL/ML 100 / DL/DS 200 QL/QS 100 |
| 01821 | EL 125 / QS 125 |



Bevel gear pair EL / EG

C 45 steel, helical gear, with keyway.



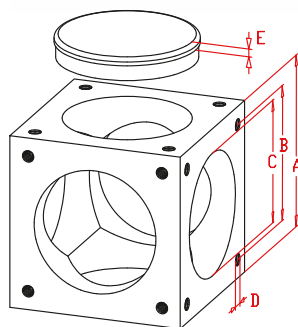
| Code-No. | Type | i | Modul | Number of teeth | A _{h7} | B | C | D | E | F |
|----------|------|-------|-------|-----------------|-----------------|------|----|----|----|------|
| 00641 | 40 | 1:1 | 2 | 16 | 10 | 13 | 28 | - | 22 | 35 |
| | | | | 24 | 10 | 17,5 | 27 | 36 | 26 | 38 |
| 00661 | 60 | 1:1 | 2,5 | 16 | 14 | 18,5 | 33 | - | 30 | 43 |
| | | | | 24 | 14 | 21 | 38 | 32 | 26 | 36 |
| 00662 | 60 | 1:1,5 | 2 | 16 | 14 | 23 | 35 | 48 | 35 | 51 |
| | | | | 24 | 14 | 23 | 35 | 48 | 35 | 51 |
| 00681 | 80 | 1:1 | 3 | 16 | 18 | 23 | 40 | - | 35 | 51,5 |
| | | | | 24 | 18 | 28 | 54 | 48 | 40 | 53 |
| 00682 | 80 | 1:1,5 | 3 | 16 | 18 | 30 | 49 | 72 | 50 | 76 |
| | | | | 24 | 19 | 30 | 49 | 72 | 50 | 76 |
| 00611 | 100 | 1:1 | 4 | 16 | 22 | 35,5 | 54 | - | 45 | 69,7 |
| | | | | 24 | 22 | 27,7 | 50 | 48 | 34 | 53 |
| 00612 | 100 | 1:1,5 | 3 | 16 | 22 | 31 | 44 | 72 | 38 | 76 |
| | | | | 24 | 22 | 31 | 44 | 72 | 38 | 76 |

Combination cube EL / EG Cover caps



| Combination cube | | | | | |
|------------------|------|-----|-----|-----|-----|
| Code-No. | Type | A | B | C | D |
| 00830 | 30 | 52 | 35 | 40 | M 4 |
| 00840 | 40 | 66 | 47 | 48 | M 6 |
| 00860 | 60 | 92 | 69 | 62 | M 8 |
| 00880 | 80 | 112 | 88 | 80 | M 8 |
| 00810 | 100 | 148 | 112 | 110 | M10 |

| Cover caps | | | | | |
|------------|------|---|--|--|--|
| Code-No. | Type | E | Black plastic. To cover empty cube sides. | | |
| 01830 | 30 | 2 | | | |
| 01840 | 40 | 5 | | | |
| 01860 | 60 | 6 | | | |
| 01880 | 80 | 6 | | | |
| 01810 | 100 | 3 | | | |



Black anodized aluminium. Used for connecting modules at right angles or in line.

Splined shaft EL / ML / EG / DL / DS

Steel splined shaft, for torque transfer between two parallel drives.
Shafts longer than 1000 mm are hollow shafts with welded journals.
For splined shafts <200mm, B1 = D applies



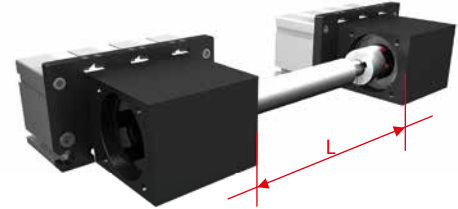
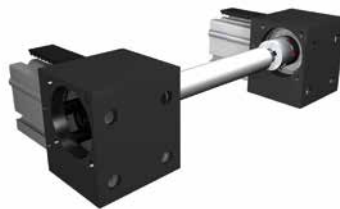
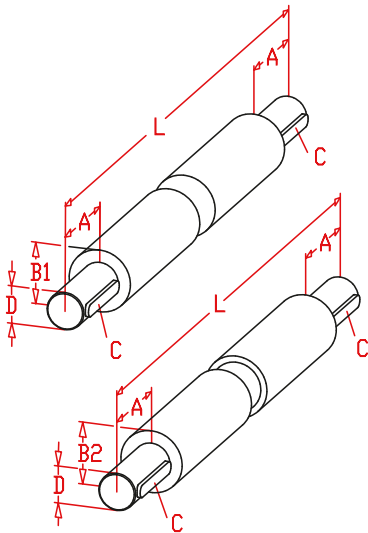
| Code-No. | Type | A | B1 | B2 | C | D | L _{max} |
|----------|------------------------------|----|----|----|--------|------------------|------------------|
| 02230 | EL/EG 30 | 15 | 8 | 12 | 2x2x12 | 6 _{h7} | 1.500 |
| 02240 | EL/EG 40 | 27 | 16 | 20 | 3x3x25 | 10 _{h7} | 3.000 |
| 02260 | EL/ML/EG 60 Q 60 D 120 | 35 | 20 | 24 | 5x5x28 | 14 _{h7} | 3.000 |
| 02280 | EL/ML/EG 80 Q 80 D 160 | 45 | 24 | 30 | 6x6x40 | 18 _{h7} | 3.000 |
| 02210 | EL/ML 100 Q 100 D 200 | 55 | 30 | 40 | 6x6x50 | 22 _{h7} | 4.500 |
| 02220 | EL/QS 125 | 55 | 40 | 50 | 8x7x50 | 30 _{h7} | 5.000 |

2.2

| | |
|-------|------|
| 02240 | 0500 |
|-------|------|

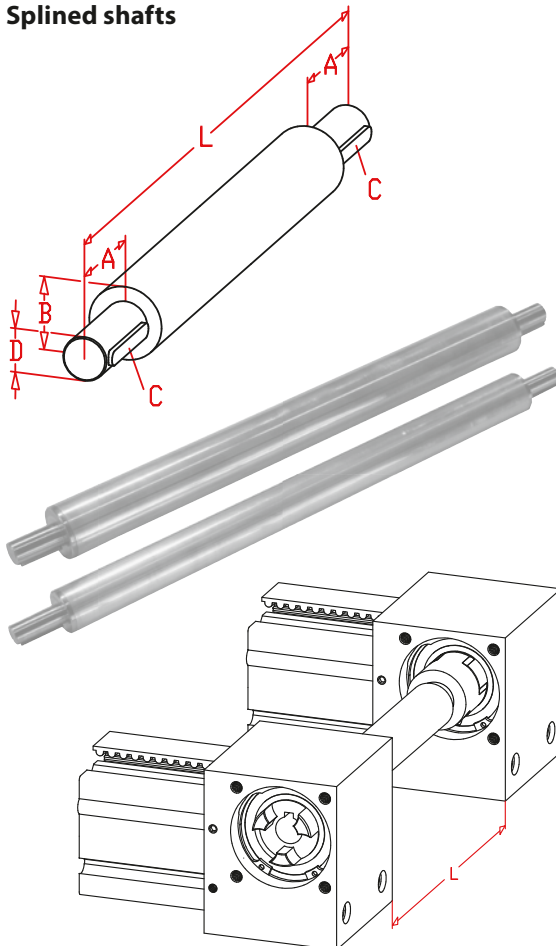
Sample order code:
Size 40, length L = 500 mm

B1 splined shaft < 1000 mm
B2 splined shaft > 1000 mm



Splined shafts

Aluminum splined shaft parallel to the torque transmission with adjustment units arranged. The splined shaft consists of an aluminum hollow shaft with bonded journals of stainless steel.

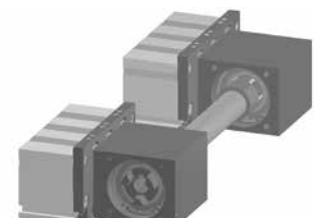
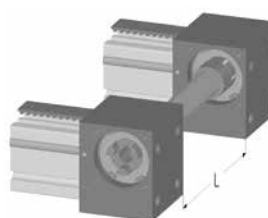


| Code-No. | Type | A | B | C | D | L _{max} |
|----------|------------------------------|----|----|--------|------------------|------------------|
| 02264 | EL/ML/EG 60 Q 60 D 120 | 35 | 27 | 5x5x28 | 14 _{h7} | 3000 |
| 02284 | EL/ML/EG 80 Q 80 D 160 | 45 | 40 | 6x6x40 | 18 _{h7} | 3000 |
| 02214 | EL/ML 100 Q 100 D 200 | 55 | 50 | 6x6x40 | 22 _{h7} | 4500 |
| 02224 | EL/QS 125 | 55 | 60 | 8x7x50 | 30 _{h7} | 5000 |

Sample ordering code:

| Code-No. | L |
|----------|------|
| 02214 | 2000 |

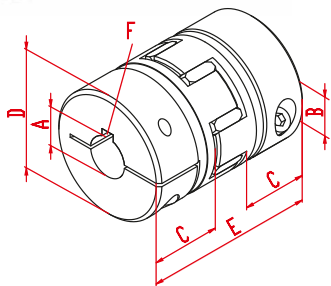
Spindle shaft for EL/QL/QS 100 and DL/DS 200 with keyway, length 2000 mm



Coupling

Torsionally elastic coupling with keyway and clamp. Light pre-load provides backlash-free torque transmission. Standard spider type is 98-A. For higher torques spider type 64-D could be used as an option.

2.2



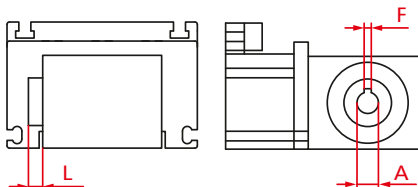
| Code-No. | Type | ØA/B (min/max) | C | D | E | F | Gear ring | Shore- Scala | Torque [Nm] | |
|----------|------|-------------------|----|----|-----|---------|-----------|-----------------|-----------------|--------------------|
| | | | | | | | | | T _{KN} | T _{K max} |
| 01400- | 7 | 3 / 7 | 7 | 14 | 22 | F | 98 | A | 2 | 4 |
| | | | | | | | 64 | D | 2,4 | 4,8 |
| 01401- | 9 | 5 / 12 | 10 | 20 | 30 | F | 98 | A | 5 | 10 |
| | | | | | | | 64 | D | 6 | 12 |
| 01410- | 14 | 5 / 16 | 11 | 30 | 35 | F | 98 | A | 12,5 | 25 |
| | | | | | | | 64 | D | 16 | 32 |
| 01420- | 19 | 6 / 22 | 25 | 40 | 66 | DIN-key | 98 | A | 21 | 42 |
| | | | | | | | 64 | D | 26 | 52 |
| 01430- | 24 | 10 / 28 | 30 | 55 | 78 | DIN-key | 98 | A | 60 | 120 |
| | | | | | | | 64 | D | 75 | 150 |
| 01440- | 28 | 18 / 38 | 35 | 65 | 90 | DIN-key | 98 | A | 160 | 320 |
| | | | | | | | 64 | D | 200 | 400 |
| 01450- | 38 | 30 / 45 | 45 | 80 | 114 | DIN-key | 98 | A | 325 | 650 |
| | | | | | | | 64 | D | 405 | 810 |

| | | |
|--------|----|----|
| 01401- | 08 | 10 |
|--------|----|----|

Sample ordering code:
Coupling type 9, ØA = 8 mm, ØB = 10 mm

Coupling for toothed belt units

Torsionally elastic coupling with keyway and clamp. Light pre-load provides backlash-free torque transmission.



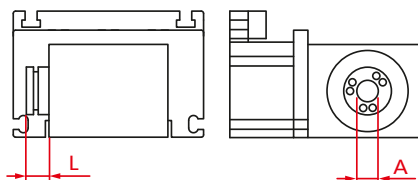
| Code-No. | Type | Ø A (min/max) | L | Size | F | Gear ring | Shore- Scala | Torque [Nm] | |
|----------|------|------------------|----|-----------------------------|---------|-----------|-----------------|-----------------|--------------------|
| | | | | | | | | T _{KN} | T _{K max} |
| 03400- | 7 | 3 / 7 | 7 | EL 30 | F | 98 | A | 2 | 4 |
| | | | | | | 64 | D | 2,4 | 4,8 |
| 03401- | 9 | 5 / 12 | 10 | EL 40 | F | 98 | A | 5 | 10 |
| | | | | | | 64 | D | 6 | 12 |
| 03410- | 14 | 5 / 16 | 11 | EL/ML 60 D 120 Q 60 | DIN-key | 98 | A | 12,5 | 25 |
| | | | | | | 64 | D | 16 | 32 |
| 03420- | 19 | 6 / 22 | 25 | EL/ML 80 D 160 Q 80 | DIN-key | 98 | A | 21 | 42 |
| | | | | | | 64 | D | 26 | 52 |
| 03430- | 24 | 10 / 28 | 30 | EL/ML 100 D 200 Q 100 | DIN-key | 98 | A | 60 | 120 |
| | | | | | | 64 | D | 75 | 150 |
| 03440- | 28 | 18 / 38 | 35 | EL/QS 125 | DIN-key | 98 | A | 160 | 320 |
| | | | | | | 64 | D | 200 | 400 |

| | |
|--------|----|
| 03410- | 12 |
|--------|----|

Sample ordering code:
Coupling type 14, ØA = 12 mm

Coupling with tension ring

Coupling, to be clamped by tension ring.



| Code-No. | Type | Ø A | L | Size | Gear ring | Shore- Scala | Torque [Nm] | |
|----------|------|----------------|----|-----------------------------|-----------|-----------------|-----------------|--------------------|
| | | | | | | | T _{KN} | T _{K max} |
| 03501- | 14 | 5, 10, 14 | 19 | EL/ML 60 D 120 Q 60 | 98 | A | 12,5 | 25 |
| | | | | | 64 | D | 16 | 32 |
| 03510- | 19 | 10, 14, 16, 19 | 25 | EL/ML 80 D 160 Q 80 | 98 | A | 21 | 42 |
| | | | | | 64 | D | 26 | 52 |
| 03520- | 24 | 19, 20, 22, 24 | 30 | EL/ML 100 D 200 Q 100 | 98 | A | 60 | 120 |
| | | | | | 64 | D | 75 | 150 |
| 03530- | 28 | 38 | 35 | EL/QS 125 | 98 | A | 160 | 320 |
| | | | | | 64 | D | 200 | 400 |

| | |
|--------|----|
| 03510- | 16 |
|--------|----|

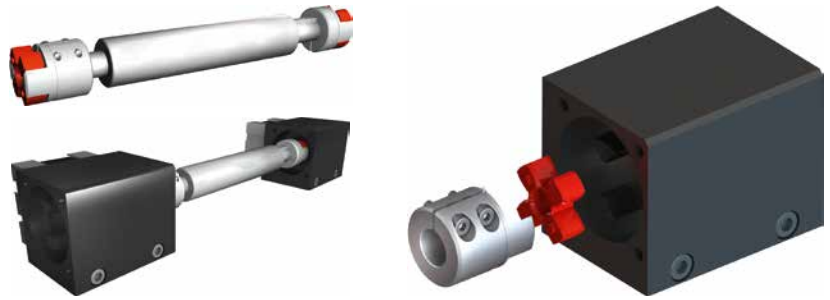
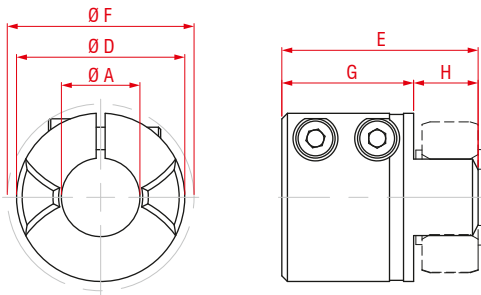
Sample ordering code:
Coupling type 19, ØA = 16 mm

Accessories

Coupling

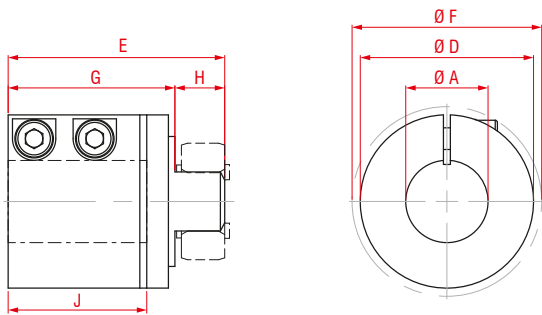
Synchronous coupling

Coupling for synchronizing of two parallel units.
Light pre-load provides backlash-free torque transmission.



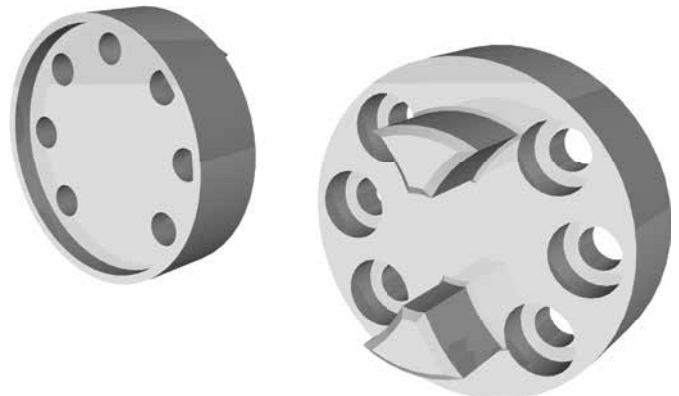
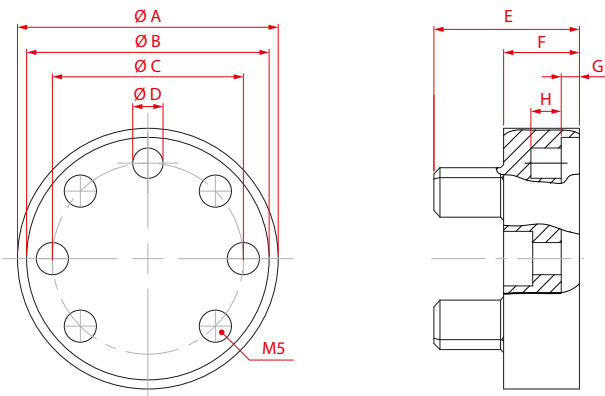
2.2

| Code-No. | Type | Ø A | Ø D | E | Ø F | G | H | Gear ring | Shore-Scala | Torque [Nm] | |
|----------|------|-----|-----|----|------|------|------|-----------|-------------|-------------|--------|
| | | | | | | | | | | TKN | TK max |
| 034001 | 7 | 6 | 14 | 21 | 16,6 | 14 | 7 | 98 | A | 2 | 4 |
| | | | | | | | | 64 | D | 2,4 | 4,8 |
| 034011 | 9 | 10 | 20 | 29 | 21,3 | 20 | 9 | 98 | A | 5 | 10 |
| | | | | | | | | 64 | D | 6 | 12 |
| 03411 | 14 | 14 | 30 | 35 | 33,6 | 23,5 | 11,5 | 98 | A | 12,5 | 25 |
| | | | | | | | | 64 | D | 16 | 32 |
| 03421 | 19 | 18 | 40 | 41 | 46 | 25 | 16 | 98 | A | 21 | 42 |
| | | | | | | | | 64 | D | 26 | 52 |



| Code-No. | Type | Ø A | Ø D | E | Ø F | G | H | J | Gear ring | Shore-Scala | Torque [Nm] | |
|----------|------|------------|-----|----|-----|------|------|----|-----------|-------------|-------------|--------|
| | | | | | | | | | | | TKN | TK max |
| 03412 | 14 | 19 19,05 | 40 | 50 | 44 | 38,5 | 11,5 | 32 | 98 | A | 12,5 | 25 |
| | | 22 24 | | | | | | | 64 | D | 16 | 32 |

Flange coupling

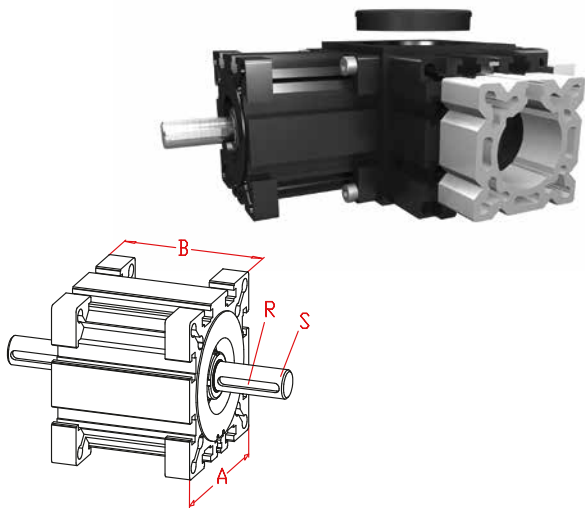


| Code-No. | Type | Ø A | Ø B | Ø C | Ø D | E | F | G | H | Gear ring | Shore-Scala | Torque [Nm] | |
|----------|------|-----|-----|------|-----|----|------|---|---|-----------|-------------|-------------|--------|
| | | | | | | | | | | | | TKN | TK max |
| 039265 | 14 | 43 | 40 | 31,5 | 5 | 24 | 12,5 | 3 | 5 | 98 | A | 12,5 | 25 |
| | | | | | | | | | | 64 | D | 16 | 32 |

Accessories

Angular gear box | Transmission unit | Toothed pulley

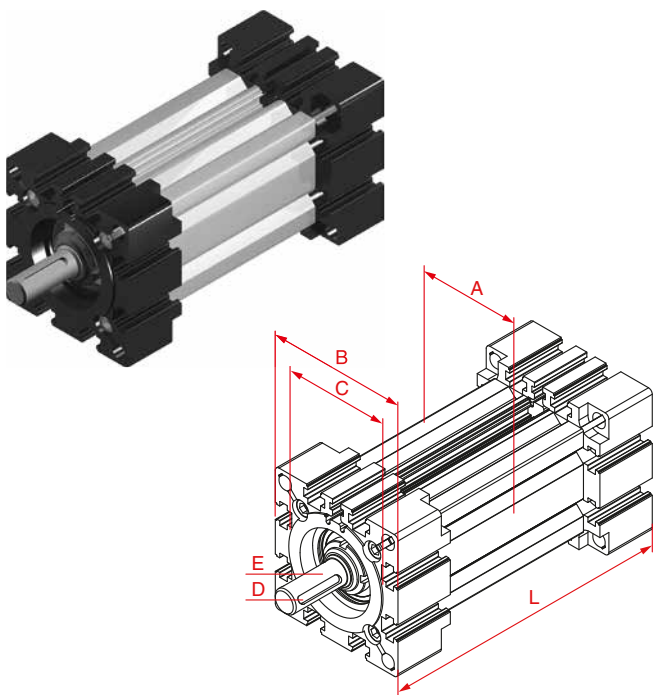
Angular gear box EL / EG



| Code No. | Type | i | m | A | B | R | S ∅ x l | Torque |
|----------|------|-------|-----|-----|-----|-----|------------|--------|
| 00731 | 30 | 1:1 | 1 | 42 | 38 | -- | 5x15 | 2 Nm |
| 00741 | 40 | 1:1 | 2 | 58 | 50 | 3x3 | 10x27 | 5 Nm |
| 00742 | 40 | 1:1,5 | 1,5 | 58 | 50 | 3x3 | 10x27 | 5 Nm |
| 00761 | 60 | 1:1 | 2,5 | 82 | 70 | 5x5 | 14x35 | 15 Nm |
| 00762 | 60 | 1:1,5 | 2 | 82 | 70 | 5x5 | 14x35 | 15 Nm |
| 00781 | 80 | 1:1 | 3 | 102 | 90 | 6x6 | 18x45 | 25 Nm |
| 00782 | 80 | 1:1,5 | 3 | 102 | 90 | 6x6 | 18x45 | 25 Nm |
| 00711 | 100 | 1:1 | 4 | 130 | 110 | 6x6 | 22x45 | 30 Nm |
| 00712 | 100 | 1:1,5 | 3 | 130 | 110 | 6x6 | 22x45 | 30 Nm |

Complete self-centering gear. Can easily be retrofitted to any EG or EL unit. Packed with grease for lubrication.

Transmission unit EL / EG

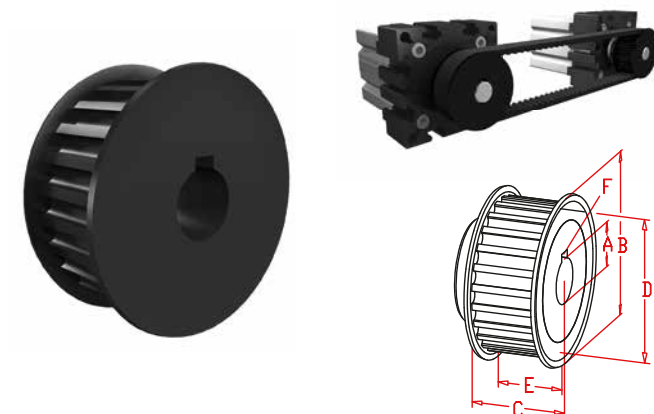


A shaft carried on ball bearings in an aluminium hollow section can be used to transmit torque or as a joining element for combining parallel linear units or as an individual element in angular operation.

| Code-No. | Type | A | B | C | D | E | L _{min} | L _{max} |
|----------|-----------------|-----|-----|----------|-------|---------|------------------|------------------|
| 01931 | 30 | 30 | 42 | 40 x 0,7 | - | 5 x 15 | 38 | 3.000 |
| 01932 | 30 no shaft | 30 | 42 | 40 x 0,7 | - | - | 38 | 3.000 |
| 01941 | 40 | 40 | 58 | 48 x 1 | 3 x 3 | 10 x 27 | 50 | 6.000 |
| 01942 | 40 no shaft | 40 | 58 | 48 x 1 | - | - | 50 | 6.000 |
| 01961 | 60 | 60 | 82 | 62 x 1 | 5 x 5 | 14 x 35 | 100 | 6.000 |
| 01962 | 60 no shaft | 60 | 82 | 62 x 1 | - | - | 100 | 6.000 |
| 01981 | 80 | 80 | 102 | 80 x 1 | 6 x 6 | 18 x 45 | 90 | 6.000 |
| 01982 | 80 no shaft | 80 | 102 | 80 x 1 | - | - | 90 | 6.000 |
| 01911 | 100 | 100 | 130 | 110 x 1 | 6 x 6 | 22 x 45 | 110 | 6.000 |
| 01912 | 100 no shaft | 100 | 130 | 110 x 1 | - | - | 110 | 6.000 |

01941 0750 Sample order code: Size 40, length L = 750 mm

Toothed pulley HTD



Material St 50, secured with key.

| Code-No. | Type | A | B | C | D | E | F | Number of teeth | Spacing |
|----------|----------------------|----|----|----|------|----|-----|-----------------|---------|
| 00450 | EL/EG 30 | 6 | 23 | 26 | 18,3 | 15 | 2x2 | 20 | 3x15 |
| 00451 | EL/EG 40 | 10 | 36 | 26 | 30,7 | 15 | 3x3 | 20 | 5x15 |
| 00452 | EL/EG 60 DL/DS120 | 14 | 44 | 38 | 40,2 | 25 | 5x5 | 26 | 5x25 |
| 00453 | EL/EG 80 DL/DS160 | 18 | 54 | 38 | 49,8 | 25 | 6x6 | 32 | 5x25 |
| 00454 | EL100 | 22 | 66 | 48 | 61,1 | 38 | 6x6 | 24 | 8x30 |

Accessories

Toothed belt | Parallel transfer unit

Toothed belt endless HTD



| Code-No. | Type | Belt | Tensile force |
|----------|----------|------|---------------|
| 00550 | EL/EG 30 | 3M15 | 200 N |
| 00551 | EL/EG 40 | 5M15 | 390 N |
| 00556 | EL/EG 40 | 5M09 | 298 N |
| 00552 | EL/EG 60 | 5M25 | 894 N |
| 00553 | EL/EG 80 | 5M25 | 894 N |
| 00554 | EL 100 | 8M30 | 1070 N |
| 00555 | EL 100 | 8M20 | 980 N |

| | |
|-------|------|
| 00551 | 0700 |
|-------|------|

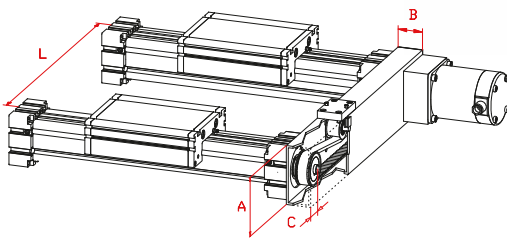
Sample order code:
Belt 5M15 perimeter: 700 mm

2.2

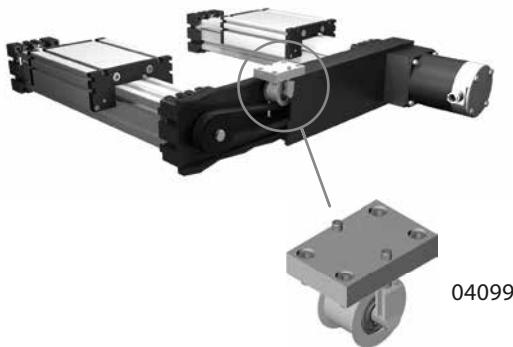
Parallel transfer unit for spindle drives

Black anodized aluminium tube with plastic end caps, pulleys fixed with keys or tension rings. Spindle centers are multiples of 5 or 8 mm, according to belt pitch.

DL / DS



EL / EG / Q



| Code-No. | Type | A | B | C | L _{max} | Belt |
|----------|-------------|-----|----|----|------------------|-------|
| T13030 | EL/EG 30 | 50 | 25 | 25 | 1.200 | 5M 9 |
| T13040 | EL/EG 40 | 80 | 40 | 30 | 1.500 | 5M 15 |
| T13060 | EL/EG/Q 60 | 100 | 50 | 42 | 2.000 | 5M 25 |
| T13061 | DL/DS 120 * | 60 | 50 | | 2.000 | 5M 25 |
| T13080 | EL/EG/Q 80 | 120 | 50 | 52 | 2.000 | 5M 25 |
| T13081 | DL/DS 160 * | 80 | 50 | | 2.000 | 5M 25 |
| T13010 | EL/Q 100 | 160 | 80 | 66 | 3.000 | 8M 30 |

* Parallel transfers are special designed parts. Dimensions given in the documentation are samples.

| | |
|--------|-----|
| T13060 | 500 |
|--------|-----|

Sample ordering code: Center-distance of axis L = 500 mm

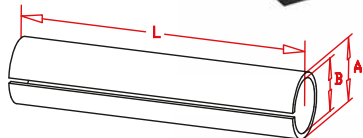
For center-distances higher than 800mm you have to use an additional tensioning device code-number 04099.

| Tensioning device | |
|-------------------|----|
| Code-No. | B |
| 04099-40 | 40 |
| 04099-50 | 50 |
| 04099-60 | 60 |

Cable conduit EL / ML / QS



Slotted plastic tube for cabling directly onto body of linear unit. The tube can simply be pressed into the half-round slot in the body and will be securely retained there.



| Code-No. | Type | A | B | L |
|----------|-------------|----|-----|----------|
| 02806 | EL 40 | 6 | 4 | max. 50m |
| 02810 | EL/ML/Q 60 | 10 | 7,5 | max. 50m |
| 02812 | EL/ML/Q 80 | 12 | 8,5 | max. 50m |
| 02816 | EL/ML/Q 100 | 16 | 12 | max. 50m |
| 02820 | EL/QS 125 | 20 | 15 | max. 50m |



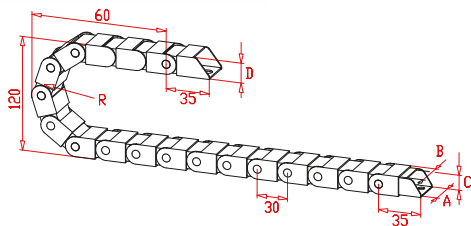
| | |
|-------|------|
| 02816 | 1000 |
|-------|------|

Sample ordering code:
Plastic tube for EL 100, 1000 mm long.

Cable chain



Black plastic, one floating and one fixed mounting bracket. The inner face opens like a zip, enabling cable to be inserted easily.



| Code-No. | Type | Name | A | B | C | D | |
|----------|------|----------------------------|------|----|----|----|--|
| 02115 | 15 | Cable chain | 25,5 | 15 | 18 | 23 | |
| 02125 | 25 | Cable chain | 35,5 | 25 | 18 | 23 | |
| 02138 | 38 | Cable chain | 48 | 38 | 18 | 23 | |
| 02150 | 50 | Cable chain | 60 | 50 | 18 | 23 | |
| 02116 | 15 | fixing brackets (2 pieces) | | | | | |
| 02126 | 25 | fixing brackets (2 pieces) | | | | | |
| 02139 | 38 | fixing brackets (2 pieces) | | | | | |
| 02151 | 50 | fixing brackets (2 pieces) | | | | | |