

Advantech All-in-one Interactive Self-service Touch Terminal

Touch Toward Convenience and Business Success

- ✓ Supermarket Price Checker
- ✓ Public Space Wayfinding
- ✓ Brand Store Point-of-Service Terminal
- ✓ Factory Mobile Workstation
- ✓ Showroom Signage Display
- ✓ Factory HMI Controller



ADVANTECH

Enabling an Intelligent Planet

www.advantech.com



UTC-300 Series

UTC-500 Series

UTC-600 Series

UTC High Performance Touch Terminal

Compact Size

- Slim and light with stylish looks
- Highly integrated peripherals
- Multi-connectivity
- Bazel-free design

Touch Selections

- Glove detectable / sensible
- Quick and intuitive response
- Resistive / P-Cap / Glass

Front IP65

- Spill resistance
- Chemical resistance
- Easy to clean

Corning Gorilla Glass(P-Cap)

- Anti-microbial
- 9H Hardness
- Clear optical sensitivity
- High Resolution Display

Fanless Design

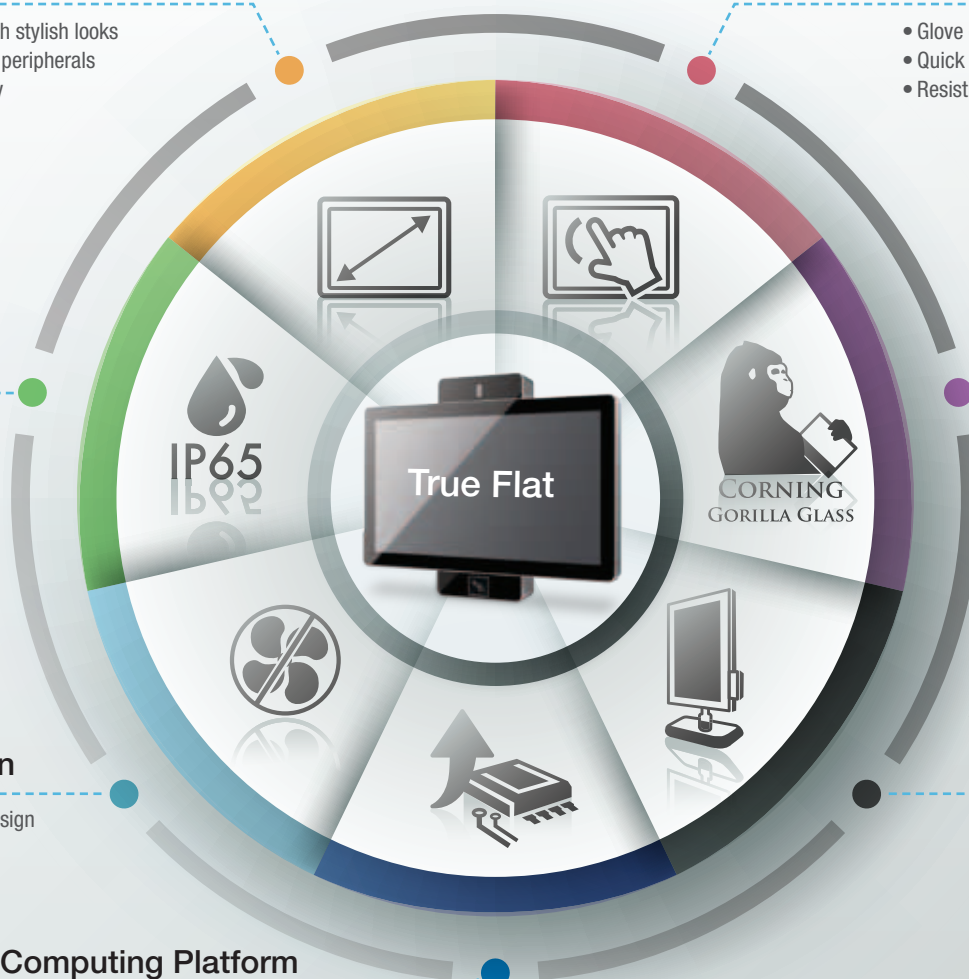
- Rugged and Fanless design
- Quiet Operation
- Anti-dust feature

Various Mounting Options

- Standard 75/100 mm VESA
- Wall mount
- Panel mount
- Table stand
- Floor stand

High Computing Platform

- Complete platform offerings
- High performance with low power consumption
- High graphic efficiency





Same tough glass.
Now
Tough
on bacteria.



Introducing the world's first antimicrobial cover glass.
Antimicrobial Corning® Gorilla® Glass

UTC x Corning Gorilla Anti-microbial Cover

A variety of features come together with Corning Gorilla Glass to create a strong, damage-resistant surface that is the best fit to satisfy applications in public spaces such as Hospitals, Treatment Center, and Nursing Home.

*Feature available only on UTC-500 P-Cap

- ☑ **9H Hardness**
- ☑ **Scratch resistance; Spill and dust-resistant suitable for the medical, public space and hospitality environment**
- ☑ **Chemical resistant glass offers a more durable damage-resistant alternative to HIT-R series screen**
- ☑ **Added protection without impacting response**
- ☑ **Water, chemical and disinfectant resistant coating: easy to clean and remove dust and dirt.**



	Non Gorilla Glass (Soda Lime Strengthen PCap Touch Screen)	Gorilla Glass (Gorilla Pcap. Touch Screen)
Hardness	7H	9H
Impact Test	130g iron ball fall at 130 cm - Pass	530g iron ball fall at 130 cm - Pass
Touch Point	Multiple Touch	Multiple Touch
Anti-Microbial	No	Yes (Optional) (Water/Dust/Chemical Proof)
Visible Light Transmission	90 % ± 2 %	90 % ± 2 %



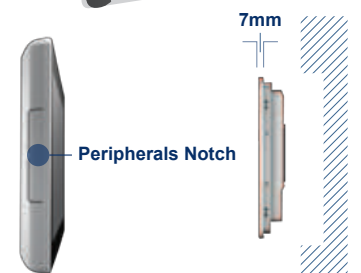
Versatile Computing Terminals with Instant Panel Mounts

UTC-300

This latest generation of category-defining multifunctional self-service computing terminals (available in black or white) are powered by a fourth-generation Intel® Bay Trail processor, equipped with up to 8 GB of memory, and feature a stunning 15.6/18.5" LCD 16:9 display. The removable frame design offers enhanced installation flexibility, with free-standing, panel/wall-mounted, and floor-standing kiosk options available.



- Low power & Fanless design
- Built in Intel BayTrail J1900
- Providing natural viewing experience with 16:9 display
- Front panel complies with IP65 protection standard
- Landscape/Portrait screen mode support different applications
- VESA 75/100 mm standard mounting holes for varied mounting demands
- Attachable frame design, flexible for panel mount applications



(With Cover)

(Without Cover)



Retail

- Merchandise price checker
- Self check-in/out service
- Satisfaction survey terminal



Equipment

- Substation security surveillance
- Control room management
- Machine HMI controller



Industrial

- Factory automation process management
- Operation digital worksheet
- Production line signage board



UTC-500 Series: Scalable and Expandable Super Star

With the choices of 15.6", '21.5" and '32"' TFT LCD displays, UTC-500 self-service terminal with the 4th Generation Intel Core™ processor provides excellent performance and lower power consumption. The system fits comfortably on shelves and countertops and is ideal for in-store displays.

- Low Power & Fanless design
- Built-in AMD® G-Series T40E/Atom Dual Core D2550/Intel Core™ i3-i7/Intel BayTrail J1900/Haswell
- Providing natural viewing experience with 16:9 15.6" Display
- Front panel complies with IP65 protection standard
- All-in-one aluminum extrusion design
- Landscape/Portrait screen mode support different applications
- VESA 100/200 mm standard mounting holes for varied mounting demands
- Attachable design for panel & peripherals to extend function and applications
- Featuring Antimicrobial Corning® Gorilla® Glass for Capacitive Touch Panel



Healthcare Center

- Allow healthcare staff to shorten paperwork flow and have more time to care for patient.
- Timely real-time test/lab result reduces errors or loss and improves diagnoses
- Streamline patient billing and liquidity, reduce insurance claims.



Restaurant

- Restaurant queuing and number calling kiosk
- Restaurant self-service eMenu board
- Speeding up service, relieving pressure at peak times when employee shortages.



Fitness Center

- Integrated webcam captures photo for self-service member registration
- RFID/Barcode reader for loyalty program such as member checking bonus redemption
- MSR module for point-of-sale or self check-in/out terminal



UTC-600 Series: All-in-one Flagship Terminal



With its 21.5" portrait full-HD display, UTC-620 is optimal for content rich applications. The 4th Generation Intel® Core™ processor provides excellent performance and lower power consumption, and are complemented with a full range of built-in peripherals which allows system integrators to have more flexibility with less effort.

- Low Power and Fanless
- Built-in Intel® Bay Trail J1900/ Intel® Core™ i5 Haswell
- Providing natural viewing experience with 16:9 21.5" Display
- All in one aluminum extrusion design
- Portrait screen mode with all contact peripheral all-in-one
- VESA 100 mm standard mounting holes for varied mounting demands
- Attachable design for panel & peripherals to extend function and applications



Public Space

- Help customers find facilities, restaurants and special events
- Enable weather and safety alerts to be communicated instantly
- Help guide customers through facilities restaurants, and event centers
- Provide instant weather and safety information



Showroom

- Showcase attractive contents with picture, animation and sounds in a variety of situation
- Enable effective messages distribution to people at targeted place on targeted time.

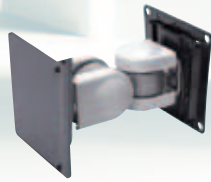


Self check-in/out eGate

- Enhance check-in/out efficiency
- Release passenger flow
- Ensure personal privacy
- Real-time alert and broadcasting

A Full-range of Peripherals & Installation Accessories

Ergonomic choice of Table Top, Floor Stand & Wall Mount



UTC-WALL-MOUNT1E

VESA 75/100 mm

- Firmly fix to a solid wall
- Weight Capacity up to 14kg
- Material: Steel
- Rotation: 270° for portrait or landscape viewing
- Tilt: 180° up and down
- Lift: 130.5 mm



UTC-WALL-MOUNT2E

VESA 100/200 mm

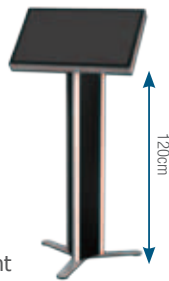
- Flush fit without movement
- Weight Capacity up to 35kg
- Material: Steel
- Sits: 42.5 mm from the wall



UTC-WALL-MOUNT3E

VESA 75/100mm

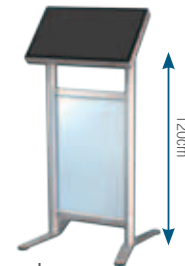
- Firmly fix to a solid wall
- Weight capacity up to 20 kg
- Material: Steel
- Sits: 27mm from the wall



UTC-T01-STANDE

Triangle shape floor stand

- Organized cable management
- VESA 75/100mm
- Height: 120cm
- Easily tilt for best viewing comfort
- Dimension: : Ø660 mm
- Weight:10kg



UTC-H01-STANDE

H-shape floor stand

- Organized cable management
- VESA 75/100mm
- Height: 120cm
- Easily tilt for best viewing comfort
- Dimension: : Ø660 mm
- Weight:10kg
- Acrylics signboard is excluded



UTC-520-STAND1E

VESA 100 mm

- 40 x 47 x 169 mm
- 45° viewing angle

Peripherals

5M Camera Module



UTC-300P-C01E(UTC-300)



UTC-P01-A1E(UTC-500)

- Auto focusing on 40-80 cm
- Video format: YUY2, MJPEG
- USB connection to UTC

Magnetic Stripe Card Reader



UTC-P02-A0E(UTC-500)

- Card standard: ANSI, ISO, ABA
- Read speed: 1-60 IPS
- Head life: 1,000,000 times
- USB connection to UTC
- RS-232 optional



UTC-300P-M01E(UTC-300)

NFC/RFID Module



UTC-300P-R01E(UTC-300)



UTC-P03-A1E(UTC-500)

- 13.56 MHz frequency
- Read mode: ISO 15693 / 14443A / B / 18000-3 / Felica
- Reading range: 3 +/- 1 cm

Smart Card Reader Module



UTC-300P-S01E(UTC-300)



UTC-P06-A0E(UTC-500)

- User card friction type (ID-1), 200,000 cycles
- SAM card: 5000 insertions
- Compliant CPU card and memory card

Barcode Module



UTC-300P-B01E(UTC-300)



UTC-P07-A1E(UTC-500)

- 2D mode scan rate : 53 frames / sec
- Reads 1D, 2D and postal codes plus stacked and composite codes
- Capture Formats: BMP, JPEG, TIFF; Greyscale: 256
- Resolution : 752 x 480 pixels

RFID + Barcode Scanner + Smart Card Reader + MSR

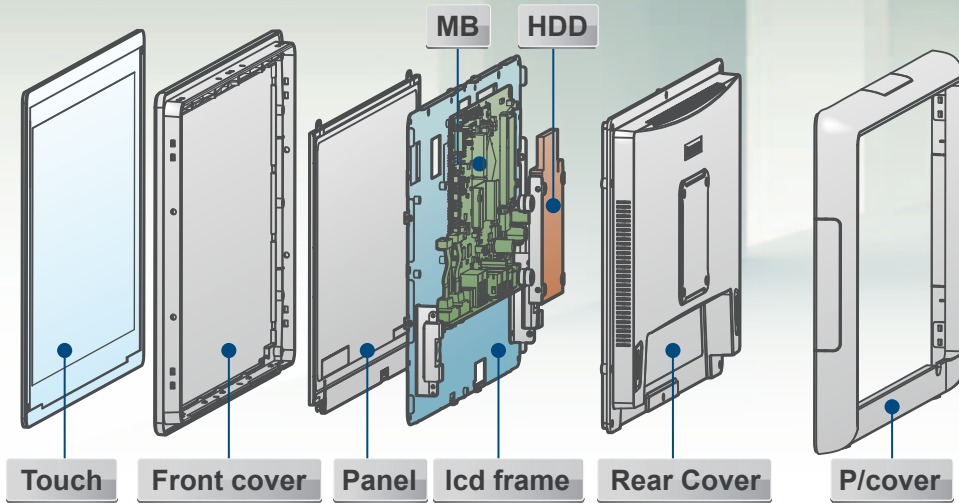


UTC-P21-A0E(UTC-500)

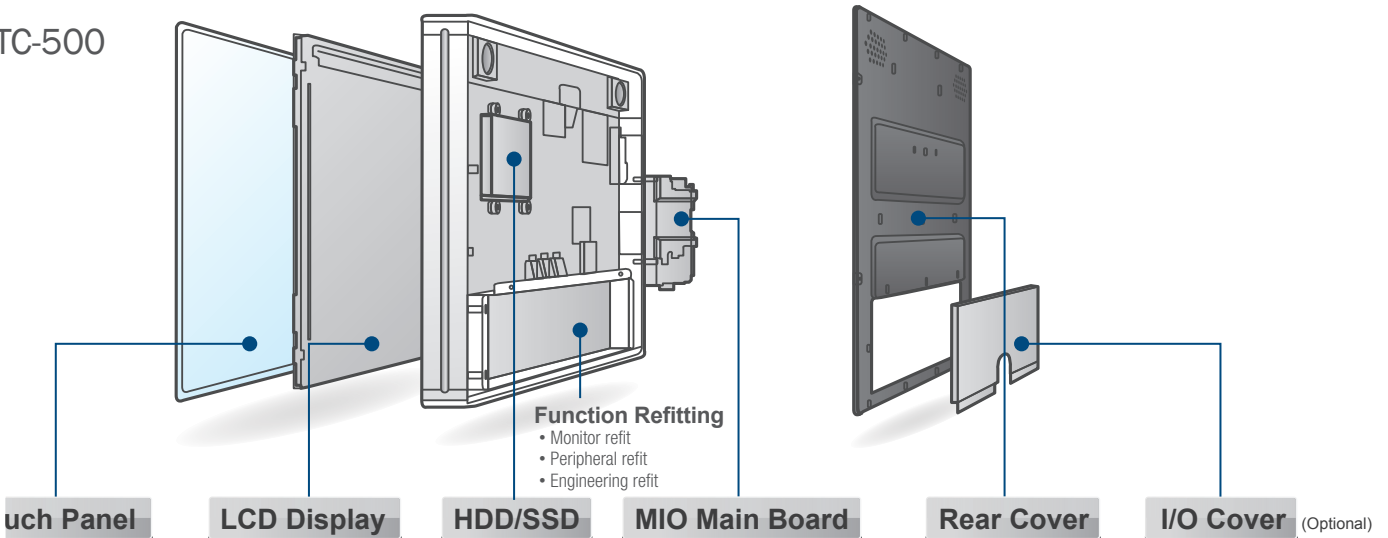
- Dimensions: 300 x 35 x 40 mm
- USB connection to UTC

Product Description

UTC-300



UTC-500



Touch Customization

- Enhanced Durability
- Enhanced Coating (AR/AG/AS)
- Multiple Touch
- Tempered Gorilla

LCD Customization

- High Brightness, up to 1500 cd/m²
- Wide View Coating, up to 89°
- Optical Bonding

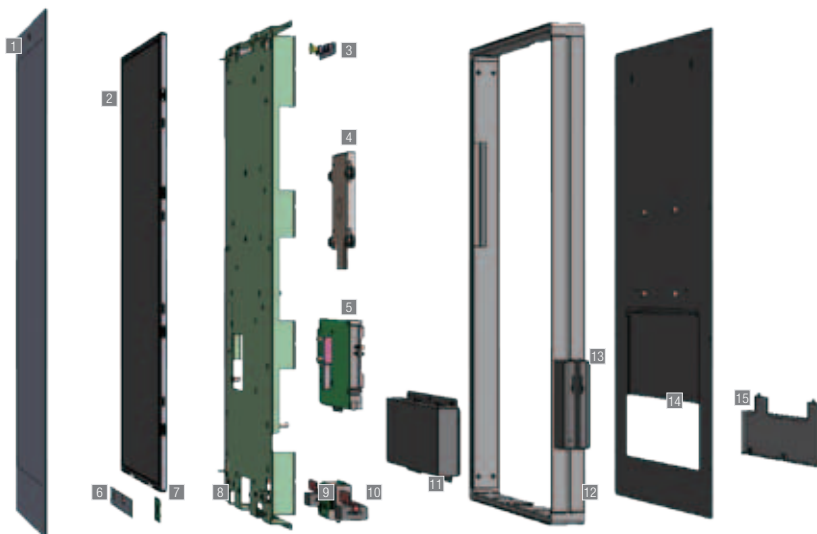
Computing Customization

- Multiple HW/SW Platforms
- WiFi /WLAN Option
- Media Capture Option

Enclosure Customization

- Open Frame Solution
- Chassis Remodeling

UTC-600



- 1 Touch Screen
- 2 21.5" LCD
- 3 Camera Module
- 4 2.5" HDD
- 5 Motherboard
- 6 Touch-Key Sensor
- 7 RFID (NFC)
- 8 Main Frame Bracket
- 9 Barcode Scanner
- 10 Speaker
- 11 I/O Bracket
- 12 Aluminum Frame
- 13 MSR
- 14 Rear Cover
- 15 IO Cover

UTC-300 Series

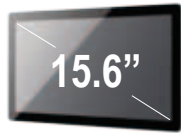
Specifications



Model Name		UTC-315		UTC-318	
Processor System	Description	15.6" Ubiquitous Touch Computer		18.5" Ubiquitous Touch Computer	
	Model	UTC-315D	UTC-315E	UTC-318D	UTC-318E
	CPU	Intel BayTrail J1900	Intel Haswell Core i5-4590T	Intel BayTrail J1900	Intel Haswell Core i5-4590T
	Basic Frequency	2.0 GHz (Quad-Core)	2.0 GHz (Quad-Core)	2.0 GHz (Quad-Core)	2.0 GHz (Quad-Core)
	Smart Cache	2M	6M	2M	6M
	Chipset	NA	Intel QM87	NA	Intel QM87
	Graphic Processor	Intle HD Graphic	Intel HD Graphic 4600	Intle HD Graphic	Intel HD Graphic 4600
	Graphic Frequency	688-854MHz	350-1150MHz	688-854MHz	350-1150MHz
	Memory	1x SO-DIMM DDR3L-1333 up to 8GB	1x SO-DIMM DDR3-1600 up to 8GB	1x SO-DIMM DDR3L-1333 up to 8GB	1x SO-DIMM DDR3-1600 up to 8GB
	HDD	1 x 2.5 internal SATA HDD bay		1 x 2.5 internal SATA HDD bay	
	Network	2 x Gigabit Ethernet ports (RJ-45)		2 x Gigabit Ethernet ports (RJ-45)	
		1 x RS-232 COM , 1 x RS-232 / 422 / 485		1 x RS-232 COM , 1 x RS-232 / 422 / 485	
		5 x USB 2.0 / 1 x USB 3.0		5 x USB 2.0 / 1 x USB 3.0	
	I/O ports	2 x Gigabit Ethernet (RJ-45)		2 x Gigabit Ethernet (RJ-45)	
		1 x HDMI		1 x HDMI	
		Audio Line-out x 1, Mic-in x 1		Audio Line-out x 1, Mic-in x 1	
		RJ-11 (option)		RJ-11 (option)	
	Stereo Speaker	1W x 2		1W x 2	
	BUS expansion	Full-size MiniPCIe/mSATA		Full-size MiniPCIe/mSATA	
Mounting	VESA 75 x 75		VESA 100 x 100		
Dimension(WxHxD)	402 x 260 x 39.7 mm		475 x 295 x 43.5 mm		
Weight	< 4 kg (8.8 lb)		< 4 kg (8.8 lb)		
OS support		Windows Embedded Standard 7		Windows Embedded Standard 7	
		Windows Embedded Standard 8		Windows Embedded Standard 8	
		Embedded Linux 3.0		Embedded Linux 3.0	
Environmental Specifications	Operating Temperature	0 ~ 40° C (32 ~ 104° F)		0 ~ 40° C (32 ~ 104° F)	
	Relative Humidity	10 ~ 95% @ 40° C non-condensing		10 ~ 95% @ 40° C non-condensing	
	Vibration	0.5G		0.5G	
	Shock	10 G peak acceleration (11 msec. duration)		10 G peak acceleration (11 msec. duration)	
	EMC/ Safety	CE, FCC, UL, CCC CB,BSMI		CE, FCC, UL, CCC CB,BSMI	
	Front Panel Protection	IP65/ NEMA4 Compliant		IP65/ NEMA4 Compliant	
Power Supply	Input Rating	12 V/7 A (84W ITE Adapter)		12 V/7 A (84W ITE Adapter)	
	Power consumption	Typical 32W / Max. 70W		Typical 32W / Max. 70W	
LCD Display	Size	15.6" TFT LCD		18.5" TFT LCD	
	Max Resolution	1366 x 768		1366 x 768	
	Max Color	262K		262K	
	Pixel Pitch (um)	252 (H) x 252 (V)		252 (H) x 252 (V)	
	Brightness (cd/m2)	200 (Typical)		250 (Typical)	
	View Angle	90° / 60°		90° / 60°	
Touch Screen	Type	Analog Resistive 5-wires (Res. Flat Glass) / Projected Capacitive Touch Panel (Pcap. Flat Glass)		Analog Resistive 5-wires (Res. Flat Glass) / Projected Capacitive Touch Panel (Pcap. Flat Glass)	
	Light Transmission	Res. Touch : 80% ± 5% / P-Cap Touch : 90% ± 2%		Res. Touch : 80% ± 5% / P-Cap Touch : 90% ± 2%	
	Controller	COM interface / USB interface		COM interface / USB interface	

UTC-500 Series

Specifications



Model Name		UTC-515					UTC-520					
Description		15.6" Ubiquitous Touch Computer					21.5" Ubiquitous Touch Computer					
Model		UTC-515A	UTC-515B	UTC-515C	UTC-515D	UTC-515E	UTC-520A	UTC-520B	UTC-520C	UTC-520D	UTC-520E	
System	CPU	AMD G-Series T40E Dual-core 1.0 GHz	Intel Atom Dual Core D2550 1.8 GHz	Intel Core i3 3217UE 1.6 GHz	Intel® Celeron® J1900	Intel® Core™ i5-4300U	AMD G-Series T40E Dual-core 1.0 GHz	Intel Atom Dual Core D2550 1.8 GHz	Intel Core i7 3517UE 1.7 GHz	Intel® Celeron® J1900	Intel® Core™ i5-4300U	
	L2 Cache	512 KB	1 MB	1 MB (L3, 3 MB)			512 KB	1 MB	1 MB (L3, 4 MB)			
	Memory	1 x SODIMM DDR3 1066 MHz up to 4 GB	1 x SODIMM DDR3 1066 MHz up to 4 GB	1 x SODIMM DDR3 1600 MHz up to 8 GB	4GB	4GB	1 x SODIMM DDR3 1066 MHz up to 4 GB	1 x SODIMM DDR3 1066 MHz up to 4 GB	1 x SODIMM DDR3 1600 MHz up to 8 GB	4GB	4GB	
	Storage	1 x 2.5 internal SATA HDD bay					1 x 2.5 internal SATA HDD bay					
Display	Size	15.6" TFT LCD					21.5" TFT LCD					
	Max Resolution	1366 x 768					1920 x 1080					
	Brightness(cd/m2)	400					250 (Optional 400)					
	Max Color	16.7M					16.7 M					
	Pixel Pitch (um)	252 (H) x 252 (V)					248.25 (H) x 248.25 (V)					
	View Angle	170°/160°					178°/178°					
Touchscreen	Type	Glass Panel (No touch function) Analog Resistive 5-wire (Res. Flat Glass) Projected Capacitive Touch Panel (Pcap. Flat Glass)					Glass Panel (No touch function) Analog Resistive 5-wire (Res. Flat Glass) Projected Capacitive Touch Panel (Pcap. Flat Glass)					
	Light Transmission	Glass : 90%					Glass : 90%					
		Res. Touch : 80% ± 5%					Res. Touch : 80% ± 5%					
		P-Cap Touch : 90% ± 2%					P-Cap Touch : 90% ± 2%					
	Controller	Glass : none Res. Touch : USB P-Cap Touch : USB					Glass : none Res. Touch : USB P-Cap Touch : USB					
I/O	USB	4 x USB 2.0	4 x USB 2.0	2 x USB 2.0 2 x USB 3.0	4	4	4 x USB 2.0	4 x USB 2.0	2 x USB 2.0 2 x USB 3.0	4	4	
	COM Ports	3 x RS-232			2 x RS-232	2	2	3 x RS-232			2	2
	VGA & HDMI	1					1					
	BUS expansion	Full-size MiniPCIe/mSATA					Full-size MiniPCIe/mSATA					
Network	LAN	2 x Gigabit Ethernet ports (RJ-45)					2 x Gigabit Ethernet ports (RJ-45)					
	WLAN	Optional					Optional					
Audio	Speaker	1W x 2					3W x 2					
	Audio Line-out	Audio Line-out x 1, Mic-in x 1					Audio Line-out x 1, Mic-in x 1					
Mechanical	Dimensions (WxHxD)	389.81 x 240.12 x 45.20 mm					517.64 x 313.51 x 43.50 mm					
	Weight	4.85 kg (10.67 lbs.)					8 kg (17.6 lbs.)					
	Mounting	VESA 100 mm standard					VESA 100 mm standard					
Environmental Specifications	Operating Temperature	0 ~ 40° C (32 ~ 104° F)					0 ~ 40° C (32 ~ 104° F)					
	Relative Humidity	10 ~ 95% @ 40° C non-condensing					10 ~ 95% @ 40° C non-condensing					
	Vibration	0.5G					0.5G					
	Shock	10 G peak acceleration (11 msec. duration)					10 G peak acceleration (11 msec. duration)					
	EMC/ Safety	CE, FCC, UL, CCC, CB, BSMI					CE, FCC, UL, CCC, CB, BSMI					
	Front Panel Protection	IP65/ NEMA4 Compliant					IP65/ NEMA4 Compliant					
Power Supply	Input Rating	12 V/5 A (60W ITE Adapter)		12 V/5 A (60W ITE Adapter)	12V/5A	12V/5A	12 V/5 A (60W ITE Adapter)		12 V/7 A (84W ITE Adapter)	12V/5A	12V/7A	
	Power Consumption	Typical 32W Max. 40W		Typical 40W Max. 50W	35W	40W	Typical 32W Max. 40W		Typical 45W Max. 65W	40W	45W	
OS Support	Windows XP/ XPE/ Embedded Windows 7 Embedded Linux 3.0	Embedded Windows 7 32-bit	Windows XP/ XPE/ Embedded Windows 7 Embedded Linux 3.0	Embedded Windows 8 Embedded Linux 3.0	Windows Embedded 7, Windows Embedded 8, Embedded Linux 3.0	Windows XP/ XPE/ Embedded Windows 7 Embedded Linux 3.0	Embedded Windows 7 32-bit	Windows XP/ XPE/ Embedded Windows 7 Embedded Linux 3.0	Embedded Windows 8 Embedded Linux 3.0	Windows Embedded 7, Windows Embedded 8, Embedded Linux 3.0		



UTC-600 Series

Specifications



UTC-532			
32" Ubiquitous Touch Computer			
UTC-532A	UTC-532C	UTC-532D	UTC-532D
AMD G-Series T40E Dual-core 1.0 GHz"	Intel Core i7 3517UE 1.7 GHz	Intel® Celeron® J1900	Intel® Core™ i5-4300U
512 KB	1 MB (L3, 4 MB)		
1 x SODIMM DDR3 1066 MHz up to 4 GB	1 x SODIMM DDR3 1600 MHz up to 8 GB	4GB	4GB
1 x 2.5 internal SATA HDD bay			
32" TFT LCD			
1920 x 1080			
300			
16.7 M			
363.75 (H) x 363.75 (V)			
178°/178°			
Glass Panel (No touch function)			
Projected Capacitive Touch Panel (Pcap. Flat Glass)			
Glass : 90%			
P-Cap Touch : 90% ± 2%			
-			
Glass : none			
P-Cap Touch : USB			
4 x USB 2.0	2 x USB 2.0 2 x USB 3.0	4	4
3 x RS-232	2 x RS-232	2	2
1			
Full-size MiniPCIe/mSATA			
2 x Gigabit Ethernet ports (RJ-45)			
Optional			
3W x 2			
Audio Line-out x 1, Mic-in x 1			
785.64 x 480.24 x 62.50 mm			
18 kg (39.6 lbs.)			
VESA 200 mm standard			
0 ~ 40° C (32 ~ 104° F)			
10 ~ 95% @ 40° C non-condensing			
0.5G			
10 G peak acceleration (11 msec. duration)			
CE, FCC, UL, CCC, CB, BSMI			
IP65/ NEMA4 Compliant			
100-240V, 3.15A Max. 50 ~ 60 Hz		100-240VAC ~ 50/60Hz 2.5A	
Typical 95W Max. 105W		95W	
Windows XP/ XPE/ Embedded 7 Embedded Windows 8 Embedded Linux 3.0		Windows Embedded 7, Windows Embedded 8, Embedded Linux 3.0	

Model Name	UTC-620C with Ivy Bridge	UTC-620D with Bay Trail	UTC-620E with Haswell	
Processor System	CPU	Intel Core™ i7 3517UE 1.7 GHz	Intel Bay Trail J1900 2.0 GHz	Intel Haswell i5-4300U 1.9 GHz
	Chipset	Intel QM77	N/A	N/A
	L2 Cache	1 MB (L3, 4MB)	2MB	(L3, 3MB)
	Memory	1 x SO-DIMM DDR3 1600MHz up to 8GB	1 x SO-DIMM DDR3L 1600MHz up to 8GB	1 x SO-DIMM DDR3L 1600MHz up to 8GB
	HDD	1 x 2.5 internal SATA HDD bay		
	Network (LAN)	2 x Gigabit Ethernet ports		
	I/O Ports	1 x RS-232 COM (RS-422/485)* 2 x USB 2.0, 2 x USB 3.0 2 x Gigabit Ethernet (RJ-45) 1 x VGA & HDMI Audio Line-out x 1 /Mic in x 1	2 x RS-232 COM (RS-422/485)* 3 x USB 2.0, 1 X USB 3.0 2 x Gigabit Ethernet (RJ-45) 1 x VGA & HDMI Audio Line-out x 1 /Mic in x 1	2 x RS-232 COM (RS-422/485)* 2 x USB 2.0, 2 x USB 3.0 2 x Gigabit Ethernet (RJ-45) 1 x VGA & HDMI Audio Line-out x 1 /Mic in x 1
	Stereo Speaker	2Wx2		
	Bus expansion	Full-size MiniPCIe/mSATA		
	Build-in Peripheral	5MP Camera, MSR, 2D Barcode scanner, NFC(RFID)		
	Function Key	5 programmable touch soft-key		
	Dimensions (W x H x D)	344.71 (w/ MSR) x 565.24 x 43.5 (mm)		
	Weight	8 kg (17.6 lb)		
	OS Support	Embedded Windows 7, Embedded Windows 8, Embedded Linux 3.0		
	Environmental Specifications	Operating Temperature	0 ~ 40° C (32 ~ 104° F)	
Relative Humidity		10 ~ 95% @ 40° C non-condensing		
Vibration		0.5G		
Shock		10 G peak acceleration (11 msec. duration)		
Power	EMC	CE, FCC, UL, CCC, BSMI		
	Input Rating	12 V/7 A (84W ITE Adapter)		
LCD Display	Power consumption	Typical 55W, Max. 75W		
	Size/Type	21.5" TFT LCD with LED backlight		
	Max. Resolution	1920 x 1080		
	Max. Color	16.7 M		
	Pixel Pitch (mm)	248.25 (H) x 248.25 (V)		
	Brightness (cd/m2)	250 (Optional 400)		
	View Angle	178°/178°		
Touch Screen Option	Type	Projected Capacitive Touch Panel (Pcap. Flat Glass)/Analog Resistive 5-wires (Res. Flat Glass)*		
	Light Transmission	90% ± 2% / 80%± 5%		
	Controller	USB Interface		

Solid, Steady, and Secure



Industrial-grade products
at competitive cost



ISO-certified products



Global logistics and
customer services
with local support



Product longevity up to
3-5 years, and superior
warranty service options



Leadership &
Partnership

Regional Service & Customization Centers

China Kunshan 86-512-5777-5666	Taiwan Taipei 886-2-2792-7818	Netherlands Eindhoven 31-40-267-7000	Poland Warsaw 48-22-33-23-730	USA Milpitas, CA 1-408-519-3800
--	---	--	---	---

Worldwide Offices

Greater China

China	
Toll Free	800-810-0345
Beijing	86-10-6298-4346
Shanghai	86-21-3632-1616
Shenzhen	86-755-8212-4222
Chengdu	86-28-8545-0198
Hong Kong	852-2720-5118

Taiwan	
Toll Free	0800-777-111
Rueiguang	886-2-2792-7818
Yang Guang	886-2-2792-7818
Xindian	886-2-2218-4567
Taichung	886-4-2378-6250
Kaohsiung	886-7-229-3600

Asia Pacific

Japan	
Toll Free	0800-500-1055
Tokyo	81-3-6802-1021
Osaka	81-6-6267-1887

Korea	
Toll Free	080-363-9494
Seoul	82-2-3663-9494

Singapore	
Singapore	65-6442-1000

Malaysia	
Toll Free	1800-88-1809
Kuala Lumpur	60-3-7724-3555
Penang	60-4-397-3788
	60-4-397-4188

Thailand	
Bangkok	66-2-248-3140

India	
Toll Free	1800-425-5071
Bangalore	91-80-2545-0206

Indonesia	
Jakarta	62-21-751-1939

Australia	
Toll Free	1300-308-531
Melbourne	61-3-9797-0100
Sydney	61-2-9477-2521

Europe

Toll Free	00800-2426-8080
Germany	
Munich	49-89-12599-0
Hilden	49-2103-97-885 -0

France	
Paris	33-1-4119-4666

Italy	
Milano	39-02-9544-961

Benelux & Nordics	
Breda	31-76-5233-100
Roosendaal	31-165-550-505

UK	
Reading	44-0118-929-4540

Poland	
Warsaw	48-22-33-23-740 / 741

Russia	
Toll Free	8-800-555-01-50
Moscow	7-495-232-1692

Americas

North America	
Toll Free	1-888-576-9668
Cincinnati	1-513-742-8895
Milpitas	1-408-519-3898
Irvine	1-949-420-2500

Brazil	
Toll Free	0800-770-5355
Saude-São Paulo	55-11-5592-5355

ADVANTECH

Enabling an Intelligent Planet

www.advantech.com

Please verify specifications before ordering. This guide is intended for reference purposes only. All product specifications are subject to change without notice. No part of this publication may be reproduced in any form or by any means, electronic, photocopying, recording or otherwise, without prior written permission of the publisher. All brand and product names are trademarks or registered trademarks of their respective companies. © Advantech Co., Ltd. 2014

860000178