

# A-C Fire Pump Fitting and Accessories

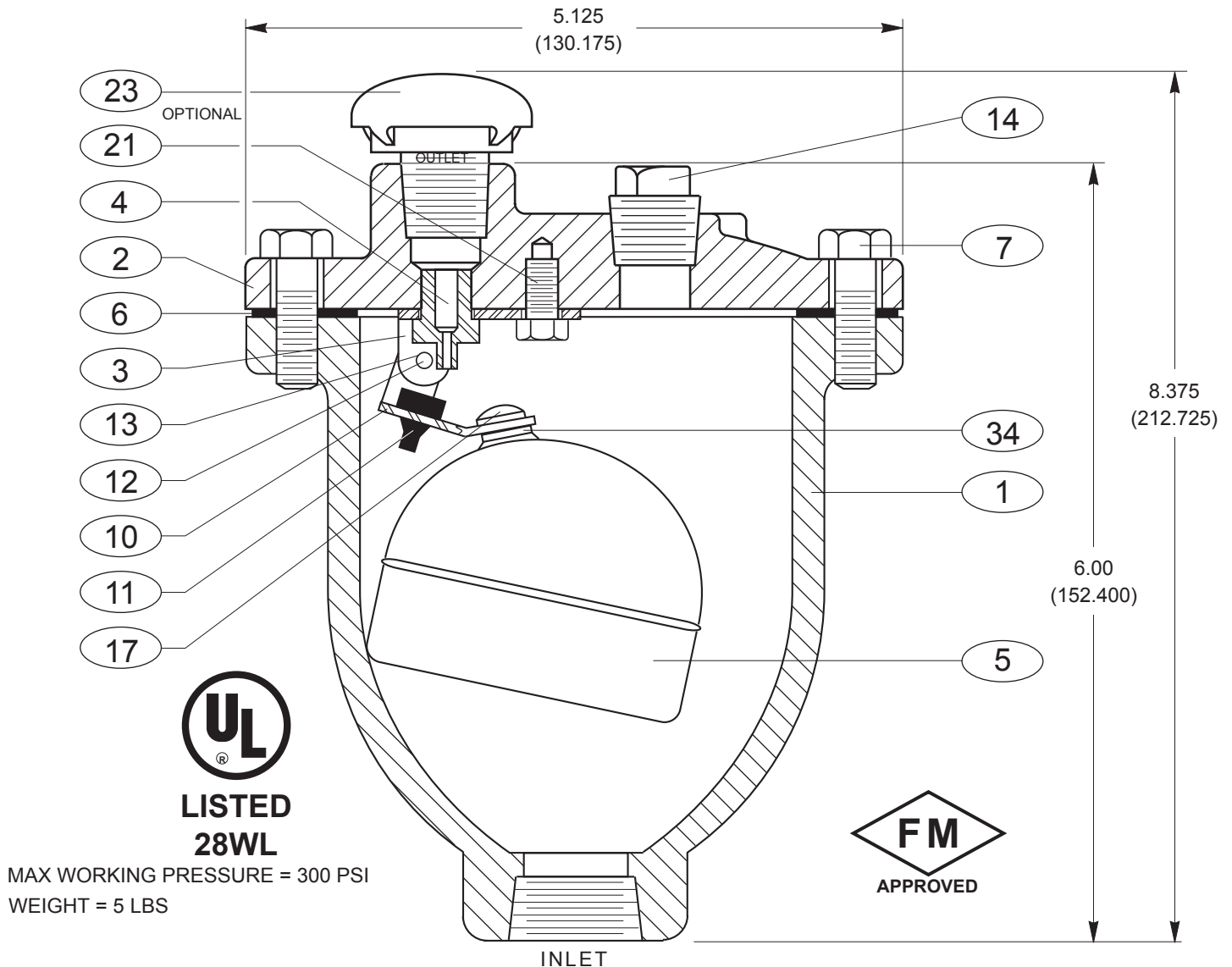
A-C 100

**AC FIRE PUMP**  
a xylem brand

# A-C Fire Pump Fitting and Accessories

<b>Table of Content</b>	<b>Page</b>
Automatic Air Release Valve .....	1
Suction And Discharge Gauge Assembly .....	2
Casing Relief Valve .....	3
Casing Relief Valve - R Series .....	4
Hose Headers 3X1,4x2, 6X4, 8X6, 10X12, 12X12, 12X16, 12X20 .....	5-12
Hose Valve Cap & Chain .....	13
Main Relief Valve - Pilot Controlled .....	14
Main Relief Valve .....	15
Closed Waste Cone .....	16
Eccentric Reducer .....	17
Concentric Reducer .....	18-19
Gerand Flowmeter .....	20
GVI Flowmeter .....	21
Straight & Reducing Tee .....	22
Single Wall Fuel Tank .....	23
Double Wall Fuel Tank .....	24

**AUTOMATIC AIR RELEASE VALVE**



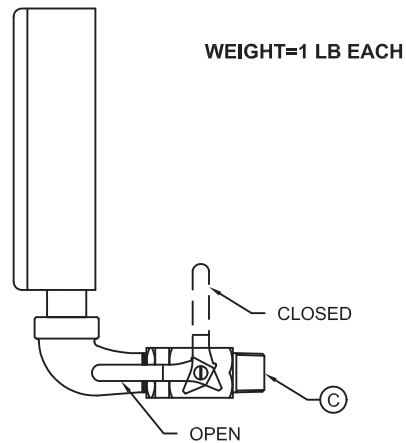
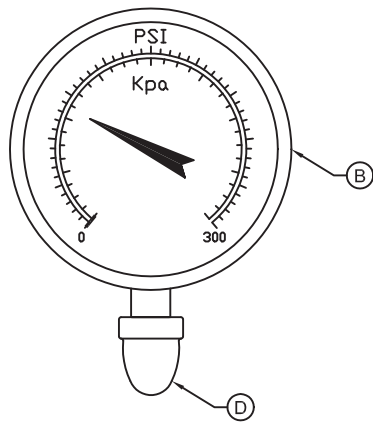
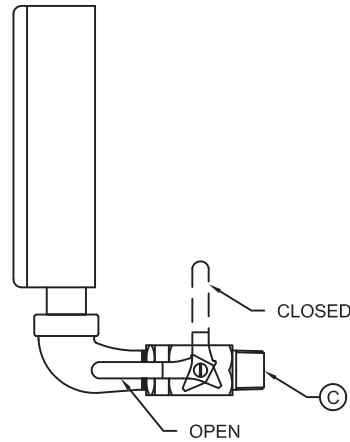
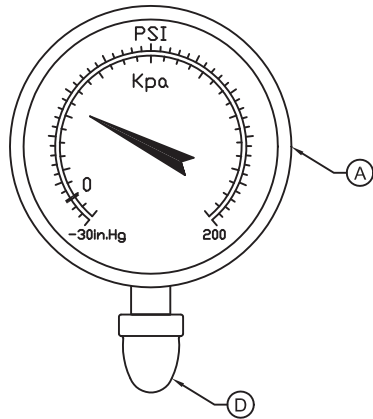
MAX WORKING PRESSURE = 300 PSI  
WEIGHT = 5 LBS

- |    |             |    |                          |
|----|-------------|----|--------------------------|
| 1  | BODY        | 11 | ORIFICE BUTTON           |
| 2  | COVER       | 12 | PIVOT PIN                |
| 3  | LEVER FRAME | 13 | PIN RETAINER (NOT SHOWN) |
| 4  | SEAT        | 14 | PIPE PLUG                |
| 5  | FLOAT       | 17 | FLOAT RETAINER           |
| 6  | GASKET      | 21 | LOCATOR                  |
| 7  | COVER BOLT  | 23 | SCREENED HOOD            |
| 10 | FLOAT ARM   | 34 | LOCK WASHER              |

**NOTE:** 1.00 NPT INLET.  
THREADED BUSHINGS  
PROVIDED FOR SMALLER  
SIZES.

<b>NOT FOR CONSTRUCTION, INSTALLATION OR APPLICATION PURPOSES UNLESS CERTIFIED</b>		
CERTIFIED FOR:		
CUSTOMER ORDER NO.:	TAG NO.	
SHOP ORDER:	CERTIFIED BY:	DATE:

**SUCTION AND DISCHARGE GAUGE ASSEMBLY**



ITEM	DESCRIPTION
A	SUCTION PRESSURE GAUGE, 3.5 DIAL, 3-2-3% ACCURACY, RANGE -30-0-200
B	DISCHARGE PRESSURE GAUGE, 3.5 DIAL, 3-2-3% ACCURACY, RANGE 0-300 PSI
C	1/4" NPT TWO WAY BALL VALVE
D	1/4" NPT STREET ELBOW

<b>NOT FOR CONSTRUCTION, INSTALLATION OR APPLICATION PURPOSES UNLESS CERTIFIED</b>		
CERTIFIED FOR:		
CUSTOMER ORDER NO.:	TAG NO.	
SHOP ORDER:	CERTIFIED BY:	DATE:

**CASING RELIEF VALVE**

**Size** 3/4" Threaded  
**Temperature Range** Water, Air: to 180°F Max.  
**Materials**  
 Body & Cover: Cast Bronze ASTM B62  
 Stainless Steel ASTM A743-CF-16Fa  
 Trim: Brass & Stainless Steel 303  
 Rubber: Buna-N® Synthetic Rubber

**Flow Range: < 2500 GPM**

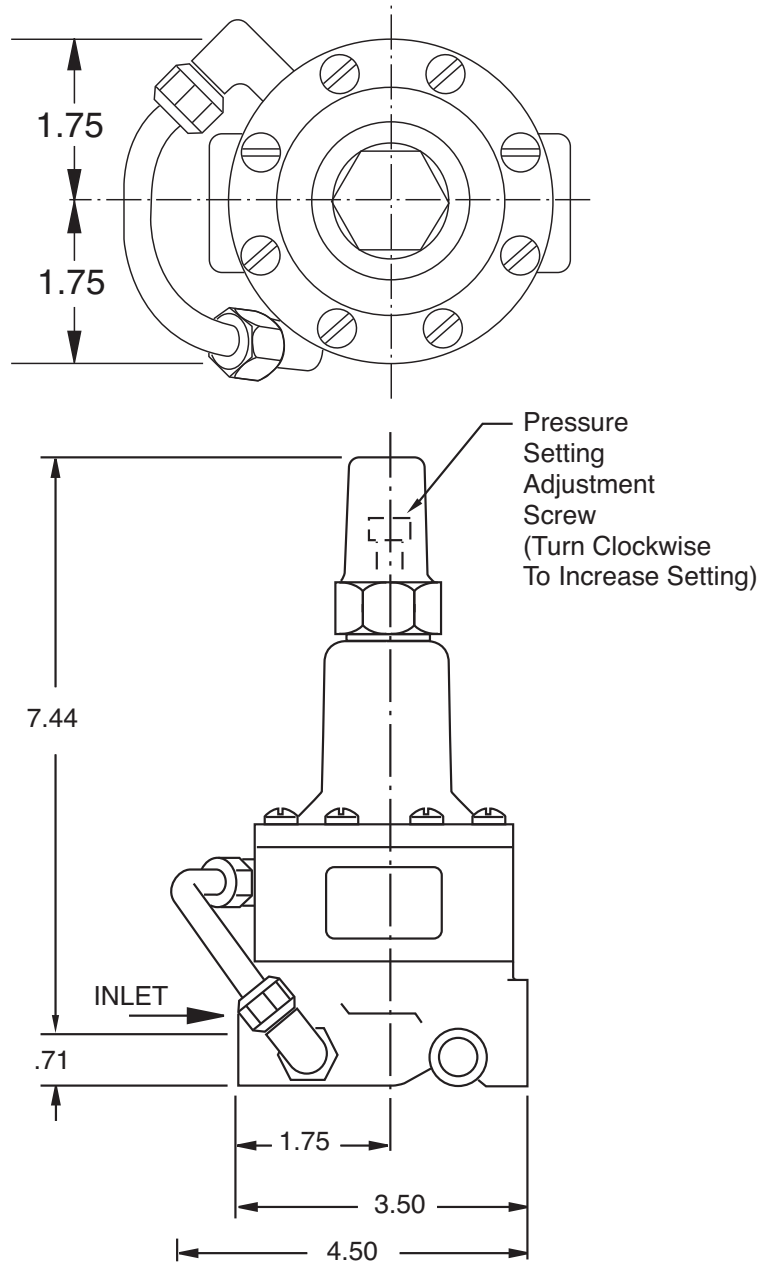
UL Listed 55L Range psi	Approximate Increase for Each Clockwise Turn of Adjusting Screw
20 to 175	28.0 psi

FM Approved 55L Range psi	Approximate Increase for Each Clockwise Turn of Adjusting Screw
0 to 75	8.5 psi
20 to 200	28.0 psi
100 to 300	18.0 psi

**Pressure Ratings** Cast Bronze 400 psi Max.  
 Stainless Steel 400 psi Max.

**Adjustment Ranges** 0 to 75 psi  
 20 to 200 psi  
 100 to 300 psi

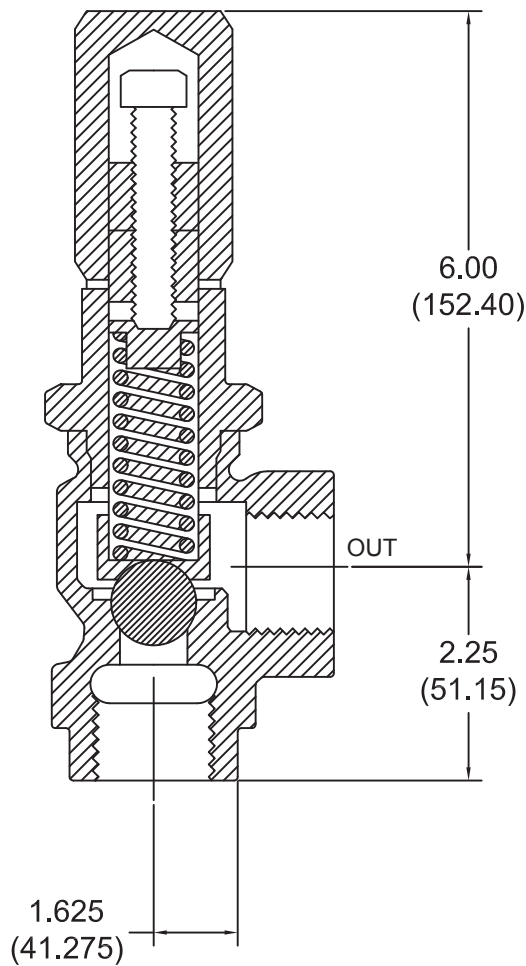
**WEIGHT = 6 LBS**



<b>NOT FOR CONSTRUCTION, INSTALLATION OR APPLICATION PURPOSES UNLESS CERTIFIED</b>		
CERTIFIED FOR:		
CUSTOMER ORDER NO.:	TAG NO.	
SHOP ORDER:	CERTIFIED BY:	DATE:

**CASING RELIEF VALVE**

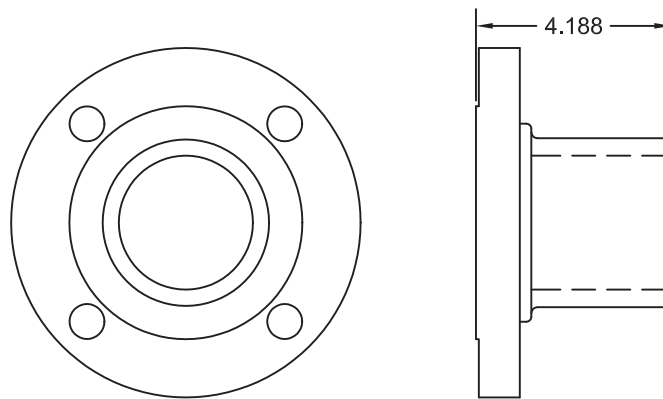
<b>MODEL</b>	R SERIES
<b>SIZE</b>	1" IN / OUT
<b>CONNECTION</b>	NPT
<b>FLOW RANGE</b>	3000-5000 GPM
<b>PRESSURE RANGE</b>	75-300 PSI
<b>BODY &amp; SEAT MATERIAL</b>	BRONZE
<b>VALVE MATERIAL</b>	STAINLESS STEEL
<b>MAX INLET PRESSURE</b>	300 PSI
<b>WEIGHT</b>	3 LBS



<b>NOT FOR CONSTRUCTION, INSTALLATION OR APPLICATION PURPOSES UNLESS CERTIFIED</b>		
CERTIFIED FOR:		
CUSTOMER ORDER NO.:	TAG NO.	
SHOP ORDER:	CERTIFIED BY:	DATE:

**HOSE HEADER**

SIZE	3"
CONNECTION	150# R.F. FLANGE
VALVE CONNECTIONS	(1) 2-1/2" NPT
MAX NFPA FLOW	300 GPM
BODY MATERIAL	FABRICATED STEEL
MAX W.P.	175 PSI
WEIGHT	15 LBS

**NOT FOR CONSTRUCTION, INSTALLATION OR APPLICATION PURPOSES UNLESS CERTIFIED**

CERTIFIED FOR:

CUSTOMER ORDER NO.:

TAG NO.

SHOP ORDER:

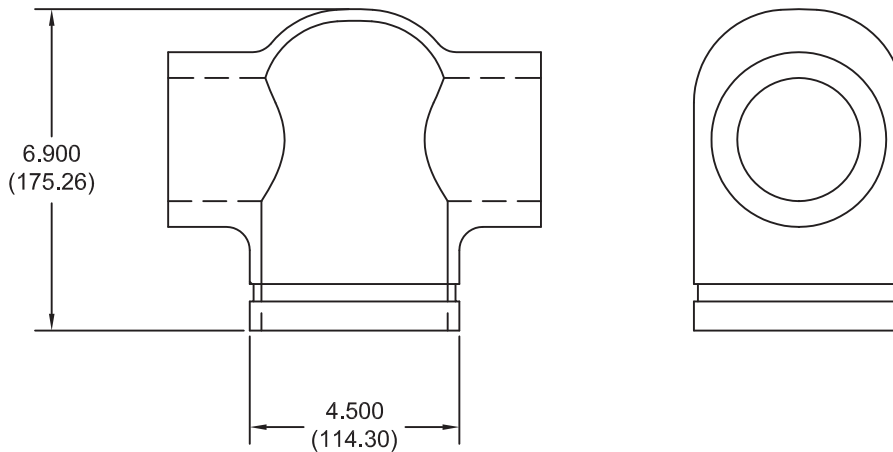
CERTIFIED BY:

DATE:

DIMENSIONS IN INCHES (mm)

**HOSE HEADER**

<b>SIZE</b>	4"
<b>CONNECTION</b>	GROOVED
<b>VALVE CONNECTIONS</b>	(2) 2-1/2" NPT
<b>MAX NFPA FLOW</b>	500 GPM
<b>BODY MATERIAL</b>	CAST STEEL
	ASTM A216 GR. WCB
<b>MAX W.P.</b>	300 PSI
<b>WEIGHT</b>	15 LBS

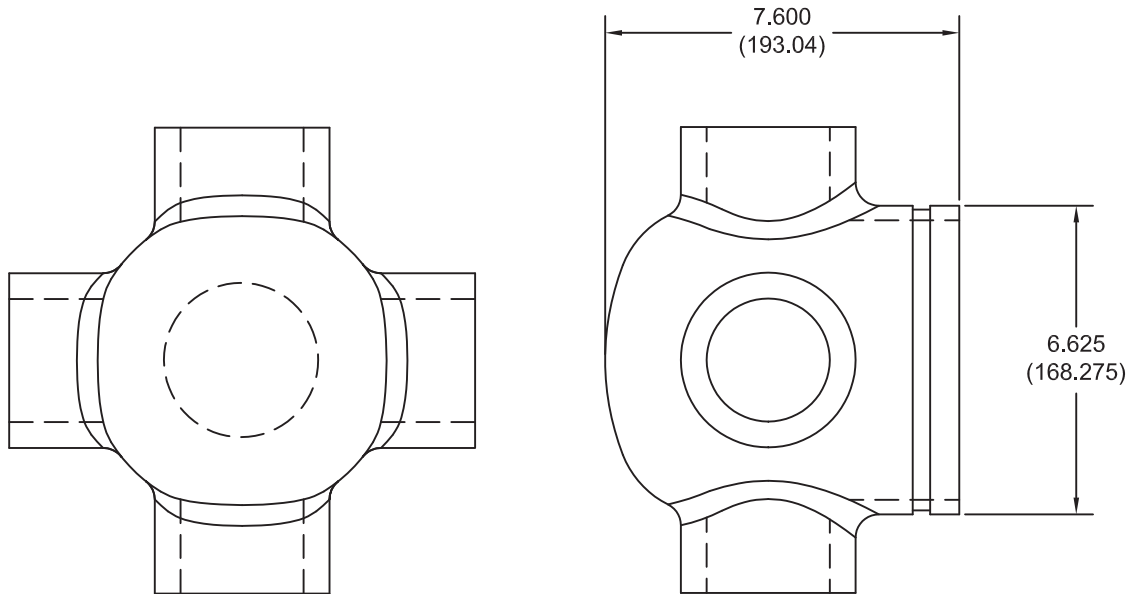


<b>NOT FOR CONSTRUCTION, INSTALLATION OR APPLICATION PURPOSES UNLESS CERTIFIED</b>		
CERTIFIED FOR:		
CUSTOMER ORDER NO.:	TAG NO.	
SHOP ORDER:	CERTIFIED BY:	DATE:



**HOSE HEADER**

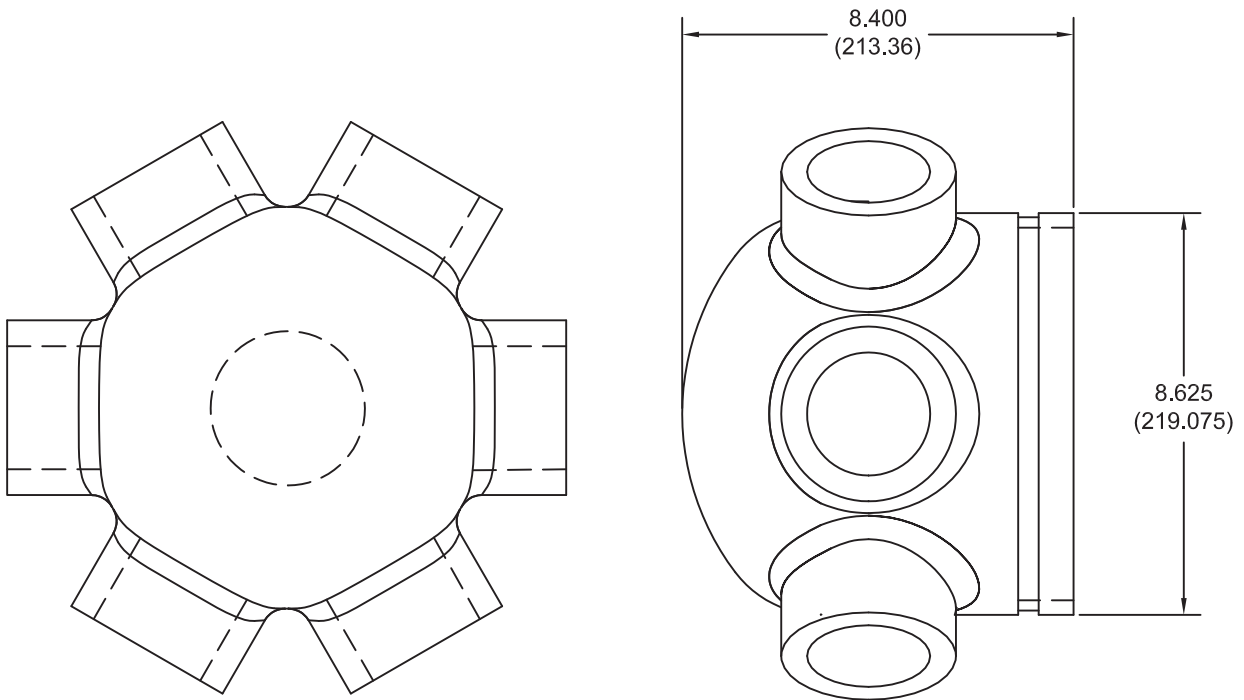
<b>SIZE</b>	6"
<b>CONNECTION</b>	GROOVED
<b>VALVE CONNECTIONS</b>	(4) 2-1/2" NPT
<b>MAX NFPA FLOW</b>	1000 GPM
<b>BODY MATERIAL</b>	CAST STEEL
	ASTM A216 GR. WCB
<b>MAX W.P.</b>	300 PSI
<b>WEIGHT</b>	25 LBS



<b>NOT FOR CONSTRUCTION, INSTALLATION OR APPLICATION PURPOSES UNLESS CERTIFIED</b>		
CERTIFIED FOR:		
CUSTOMER ORDER NO.:	TAG NO.	
SHOP ORDER:	CERTIFIED BY:	DATE:

**HOSE HEADER**

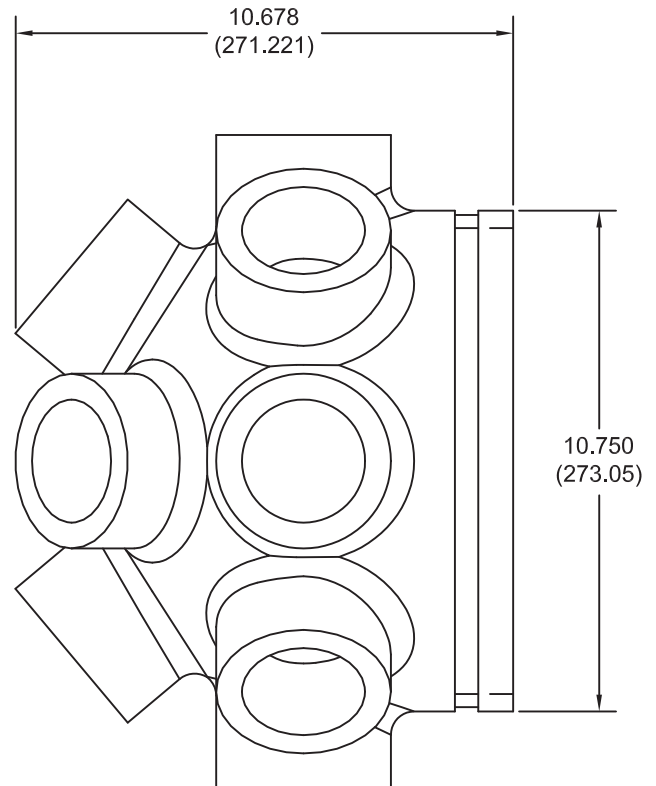
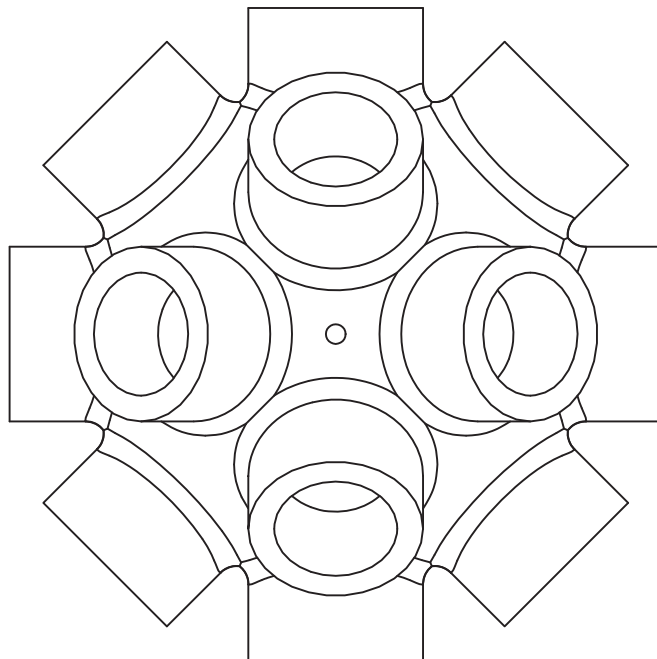
<b>SIZE</b>	8"
<b>CONNECTION</b>	GROOVED
<b>VALVE CONNECTIONS</b>	(6) 2-1/2" NPT
<b>MAX NFPA FLOW</b>	2000 GPM
<b>BODY MATERIAL</b>	CAST STEEL
	ASTM A216 GR. WCB
<b>MAX W.P.</b>	300 PSI
<b>WEIGHT</b>	35 LBS



<b>NOT FOR CONSTRUCTION, INSTALLATION OR APPLICATION PURPOSES UNLESS CERTIFIED</b>		
CERTIFIED FOR:		
CUSTOMER ORDER NO.:	TAG NO.	
SHOP ORDER:	CERTIFIED BY:	DATE:

**HOSE HEADER**

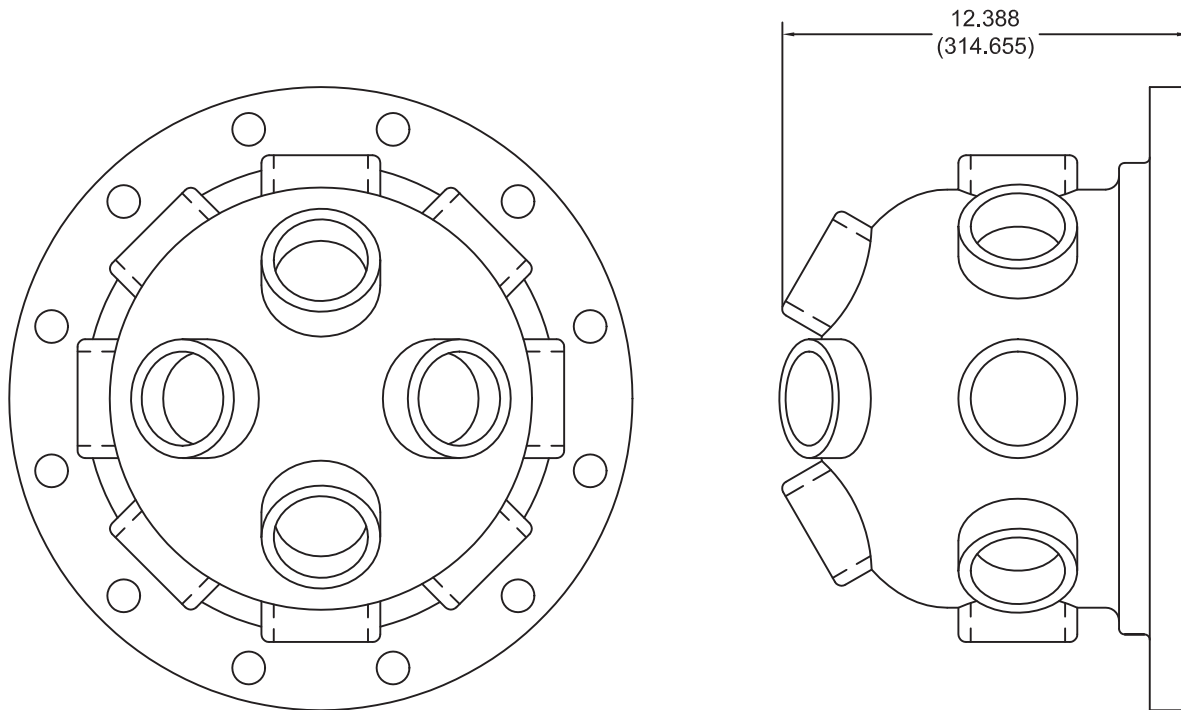
<b>SIZE</b>	10"
<b>CONNECTION</b>	GROOVED
<b>VALVE CONNECTIONS</b>	(12) 2-1/2" NPT
<b>MAX NFPA FLOW</b>	3000 GPM
<b>BODY MATERIAL</b>	CAST STEEL
	ASTM A216 GR. WCB
<b>MAX W.P.</b>	300 PSI
<b>WEIGHT</b>	65 LBS



<b>NOT FOR CONSTRUCTION, INSTALLATION OR APPLICATION PURPOSES UNLESS CERTIFIED</b>		
CERTIFIED FOR:		
CUSTOMER ORDER NO.:	TAG NO.	
SHOP ORDER:	CERTIFIED BY:	DATE:

**HOSE HEADER**

<b>SIZE</b>	12"
<b>CONNECTION</b>	150# R.F.
<b>VALVE CONNECTIONS</b>	(12) 2-1/2" NPT
<b>MAX NFPA FLOW</b>	3500 GPM
<b>BODY MATERIAL</b>	FABRICATED STEEL
<b>MAX W.P.</b>	235 PSI
<b>WEIGHT</b>	134 LBS

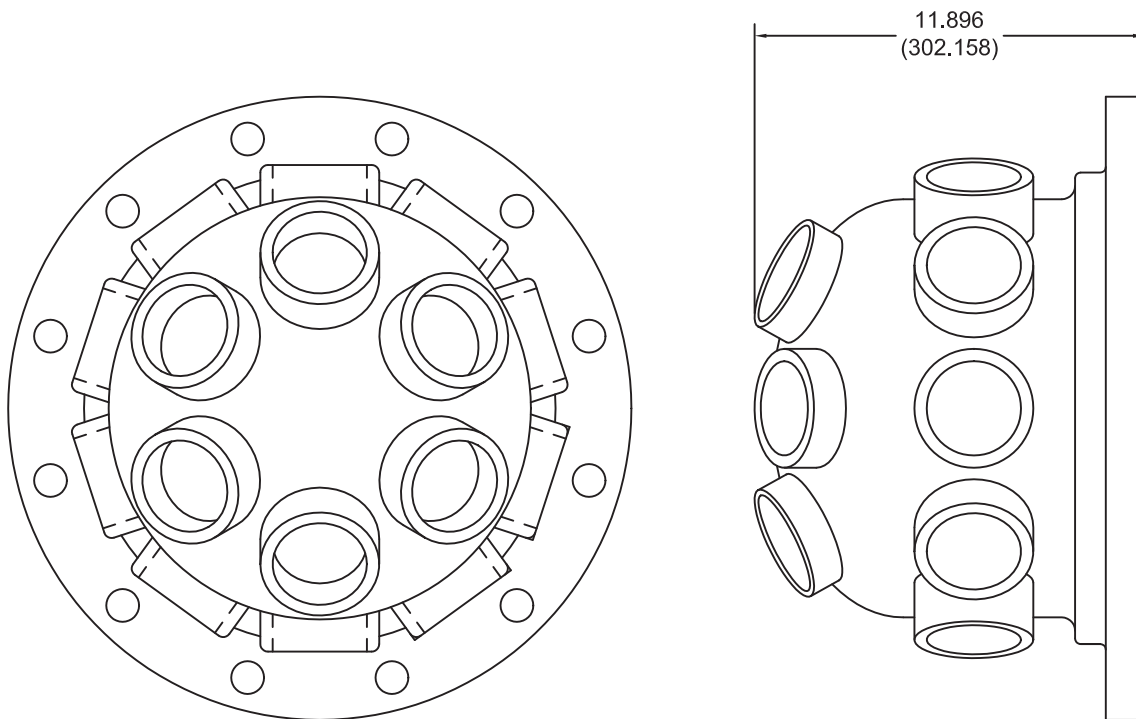


<b>NOT FOR CONSTRUCTION, INSTALLATION OR APPLICATION PURPOSES UNLESS CERTIFIED</b>		
CERTIFIED FOR:		
CUSTOMER ORDER NO.:	TAG NO.	
SHOP ORDER:	CERTIFIED BY:	DATE:

DIMENSIONS IN INCHES (mm)

**HOSE HEADER**

<b>SIZE</b>	12"
<b>CONNECTION</b>	150# R.F.
<b>VALVE CONNECTIONS</b>	(16) 2-1/2" NPT
<b>MAX NFPA FLOW</b>	4500 GPM
<b>BODY MATERIAL</b>	FABRICATED STEEL
<b>MAX W.P.</b>	235 PSI
<b>WEIGHT</b>	162 LBS

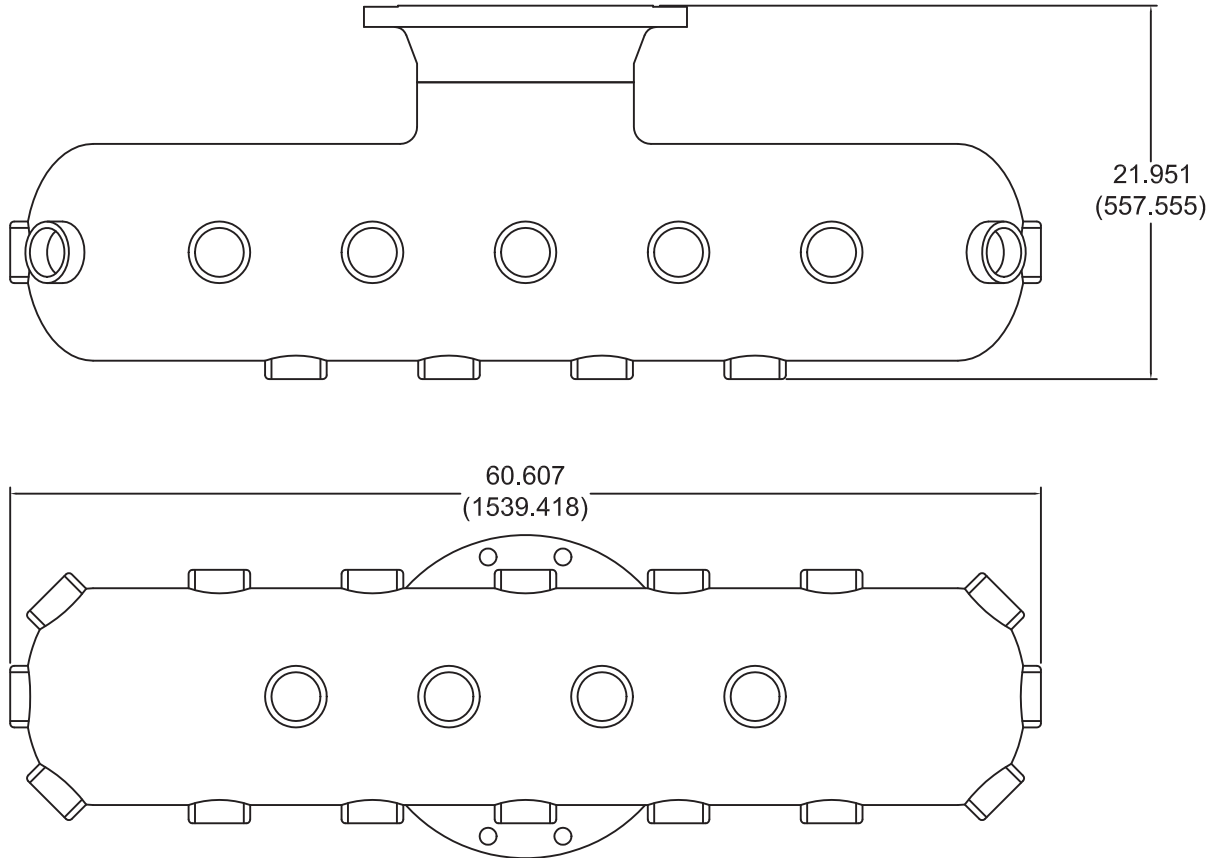


<b>NOT FOR CONSTRUCTION, INSTALLATION OR APPLICATION PURPOSES UNLESS CERTIFIED</b>		
CERTIFIED FOR:		
CUSTOMER ORDER NO.:	TAG NO.	
SHOP ORDER:	CERTIFIED BY:	DATE:

DIMENSIONS IN INCHES (mm)

**HOSE HEADER**

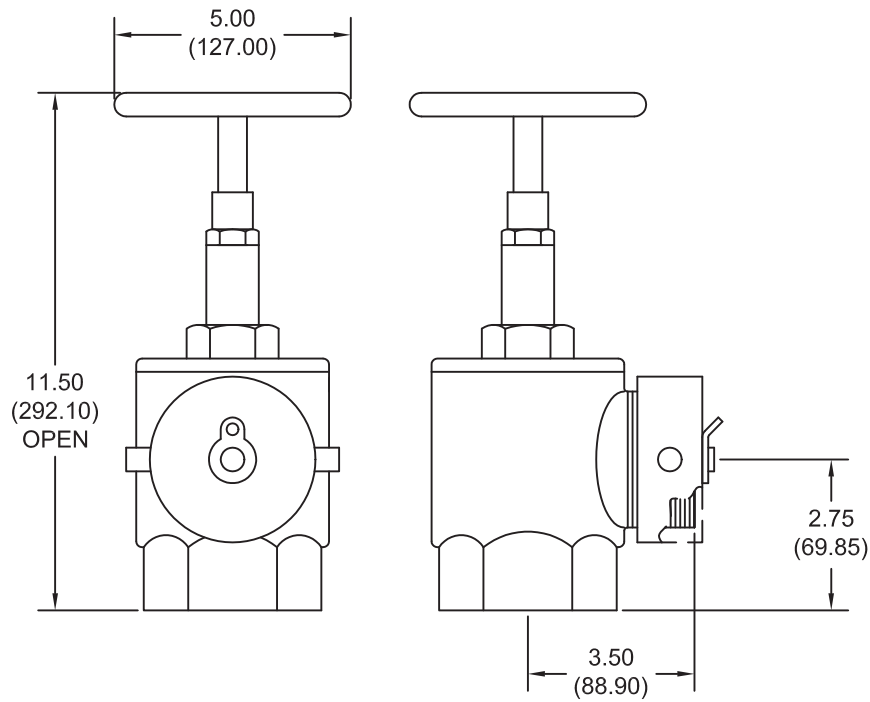
<b>SIZE</b>	12"
<b>CONNECTION</b>	150# R.F.
<b>VALVE CONNECTIONS</b>	(20) 2-1/2" NPT
<b>MAX NFPA FLOW</b>	5000 GPM
<b>BODY MATERIAL</b>	FABRICATED STEEL
<b>MAX W.P.</b>	235 PSI
<b>WEIGHT</b>	336 LBS



<b>NOT FOR CONSTRUCTION, INSTALLATION OR APPLICATION PURPOSES UNLESS CERTIFIED</b>		
CERTIFIED FOR:		
CUSTOMER ORDER NO.:	TAG NO.	
SHOP ORDER:	CERTIFIED BY:	DATE:

**HOSE VALVE CAP & CHAIN**

<b>INLET</b>	2-1/2" NPT
<b>HOSE THREAD</b>	2-1/2" NST (STD)
	OTHER _____
<b>BODY MATERIAL</b>	CAST BRASS
<b>MAX W.P.</b>	300 PSI
<b>WEIGHT</b>	20 LBS



<b>NOT FOR CONSTRUCTION, INSTALLATION OR APPLICATION PURPOSES UNLESS CERTIFIED</b>		
CERTIFIED FOR:		
CUSTOMER ORDER NO.:	TAG NO.	
SHOP ORDER:	CERTIFIED BY:	DATE:

**MAIN RELIEF VALVE**

PILOT CONTROLLED

**Sizes** *Angle* 2" - 8" flanged

**End Details** 150 and 300 ANSI B16.42

**Pressure Ratings** class - 175 psi Max.  
class - 300 psi Max

Water, to 180°F Max.

**Materials** *Main Valve Body & Cover*

Ductile Iron ASTM A-536

Naval Bronze ASTM B61

Other Material Available

*Standard Main Valve Trim:*

Bronze Seat, Teflon Coated

Stainless Steel Stem, Delrin Sleeved

*Standard Pilot Control System:*

Cast Bronze with

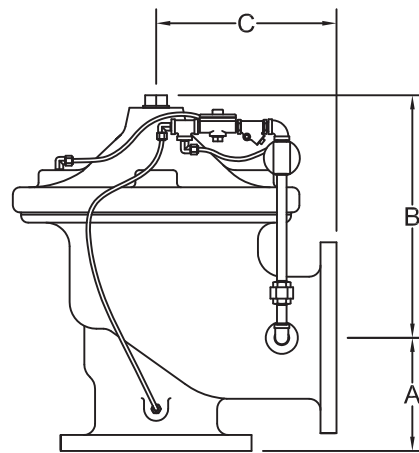
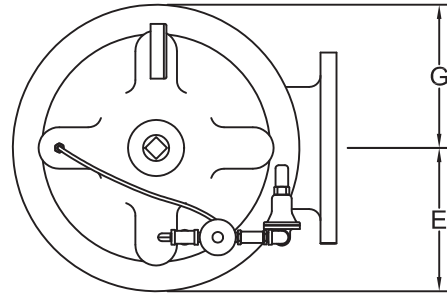
Stainless Steel trim

**Adjustment Range** Available in the following relief pressure ranges:

20-200 psi (150 Class)

100-300 psi (300 Class)

**UL Listed / FM Approved** (Sizes 3" - 8")



	<b>2"</b>	<b>2-1/2"</b>	<b>3</b>	<b>4</b>	<b>6</b>	<b>8</b>
<b>WEIGHT (lbs)</b>	50	50	80	130	210	270

		VALVE SIZE (INCHES)					
		2	2 1/2	3	4	6	8
<b>THREADED</b>	<b>A</b>	3.250 (82.55)	4.000 (101.6)				
<b>150# FLANGED</b>		3.250 (82.55)	4.000 (101.6)	4.000 (101.6)	5.000 (127)	6.000 (152.4)	8.000 (203.2)
<b>300# FLANGED</b>		3.500 (88.9)	4.310 (109.474)	4.380 (111.252)	5.310 (134.874)	6.500 (165.1)	8.500 (215.9)
	<b>B</b>	12.000 (304.8)	12.250 (311.15)	12.500 (317.5)	13.000 (330.2)	14.310 (363.474)	16.310 (414.274)
<b>THREADED</b>	<b>C</b>	4.750 (120.65)	5.500 (139.7)				
<b>150# FLANGED</b>		4.750 (120.65)	5.500 (139.7)	6.000 (152.4)	7.500 (190.5)	10.000 (254)	12.750 (323.85)
<b>300# FLANGED</b>		5.000 (127)	5.880 (149.352)	6.380 (162.052)	7.880 (200.152)	10.500 (266.7)	13.250 (336.55)
	<b>E</b>	6.000 (152.4)	6.690 (169.926)	7.750 (196.85)	7.880 (200.152)	8.500 (215.9)	9.750 (247.65)
	<b>G</b>	3.310 (84.074)	4.000 (101.6)	4.560 (115.824)	5.750 (146.05)	7.880 (200.152)	10.000 (254)

**NOT FOR CONSTRUCTION, INSTALLATION OR APPLICATION PURPOSES UNLESS CERTIFIED**

CERTIFIED FOR:

CUSTOMER ORDER NO.:

TAG NO.

SHOP ORDER:

CERTIFIED BY:

DATE:



**MAIN RELIEF VALVE**

**SIZES**

**END DETAILS**

WATER,

**MATERIALS**

**UL LISTED /**

**FM APPROVED**

ANGLE 3" – 6" FLANGED

125# / 125# ANSI B16.1

125# / 250# ANSI B16.1

-20°F TP 406°F

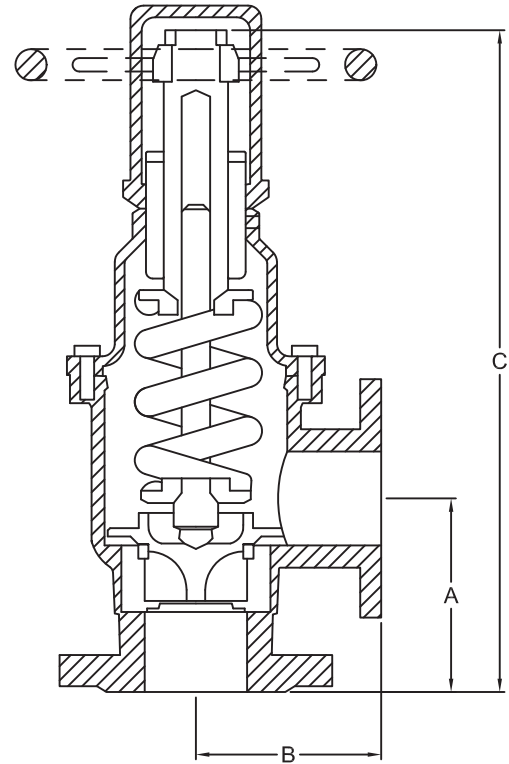
**MAIN VALVE BODY & COVER**

IRON, A126 CLASS A OR B

**STANDARD MAIN VALVE TRIM**

BRONZE DISC & INSERT

(SIZES 3" – 6")

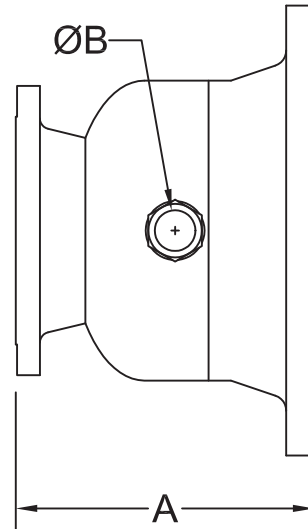


VALVE SIZE	INLET	OUTLET	A	B	C	MIN/MAX RANGE	APPROX WT
3x3	125# FLANGE	125# FLANGE	6.125 (155.575)	5.875 (149.225)	21.625 (549.275)	60/175	110
3x3	250# FLANGE		6.125 (155.575)	5.875 (149.225)	21.625 (549.275)	60/200	110
4x4	125# FLANGE		6.625 (168.275)	6.5 (165.1)	26 (660.4)	60/175	185
4x4	250# FLANGE		6.625 (168.275)	6.5 (165.1)	26 (660.4)	60/200	185
6x6	125# FLANGE		9.375 (238.125)	8.5 (215.9)	31 (787.4)	60/175	350
6x6	250# FLANGE		9.375 (238.125)	8.5 (215.9)	31 (787.4)	60/200	350

<b>NOT FOR CONSTRUCTION, INSTALLATION OR APPLICATION PURPOSES UNLESS CERTIFIED</b>		
CERTIFIED FOR:		
CUSTOMER ORDER NO.:	TAG NO.	
SHOP ORDER:	CERTIFIED BY:	DATE:

**CLOSED WASTE CONE**

**INLET CONNECTION** 150# R.F. ANSI B16.5  
**OUTLET CONNECTION** 150# R.F. ANSI B16.5  
**BODY MATERIAL** FABRICATED STEEL  
**MAX W.P.** 175 PSI



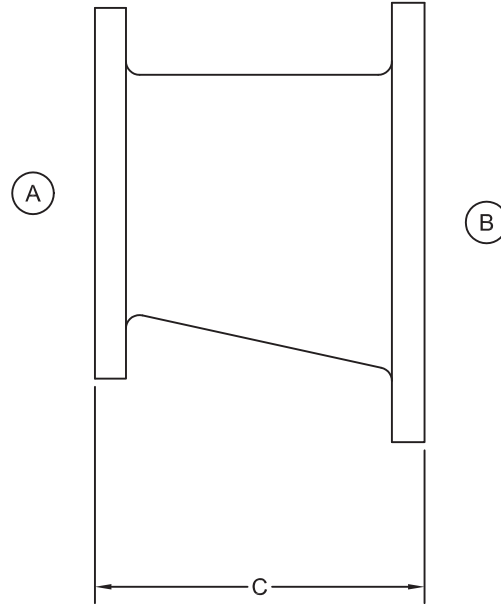
SIZE	A	B	WT
2 x 2-1/2	8.00 (203.2)	1.00 (25.4)	18
2-1/2 x 3-1/2	7.50 (190.5)	1.00 (25.4)	27
3 x 5	8.50 (215.9)	2.00 (50.8)	37
4 x 6	9.03 (229.362)	2.00 (50.8)	48
4 x 8	10.25 (260.35)	2.00 (50.8)	68
6 x 8	10.25 (260.35)	2.00 (50.8)	77
6 x 10	11.50 (292.1)	2.00 (50.8)	98
8 x 12	13.00 (330.2)	2.00 (50.8)	151
8 x 14	14.00 (355.6)	2.00 (50.8)	197

<b>NOT FOR CONSTRUCTION, INSTALLATION OR APPLICATION PURPOSES UNLESS CERTIFIED</b>		
CERTIFIED FOR:		
CUSTOMER ORDER NO.:	TAG NO.	
SHOP ORDER:	CERTIFIED BY:	DATE:

## ECCENTRIC REDUCER

**INLET CONNECTION**      125# F.F. PER ANSI B16.1  
**OUTLET CONNECTION**    125# F.F. PER ANSI B16.1  
**BODY MATERIAL**        CAST IRON

A	B	C	WT	MAX W.P.
2 1/2	4	7.00 (177.8)	28	175 PSI
3	4	7.00 (177.8)	28	
4	5	8.00 (203.2)	39	
4	6	9.00 (228.6)	50	
5	6	9.00 (228.6)	51	
5	8	11.00 (279.4)	76	
6	8	11.00 (279.4)	77	
8	10	12.00 (304.8)	120	
10	12	14.00 (355.6)	180	
12	14	16.00 (406.4)	220	150 PSI
12	16	18.00 (457.2)	265	
14	16	18.00 (457.2)	460	

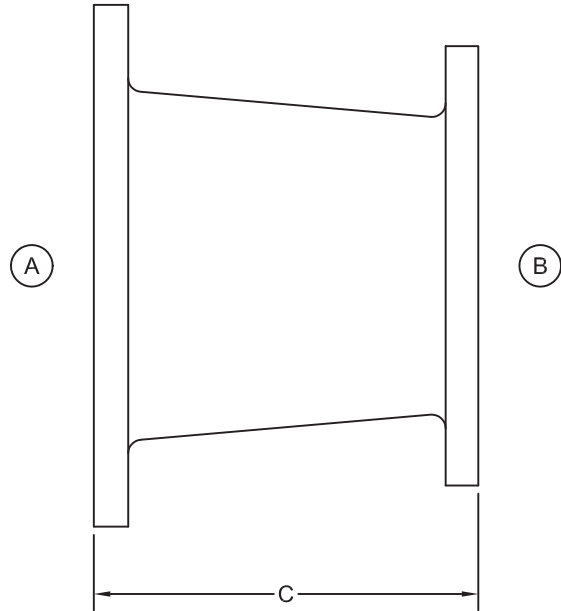


<b>NOT FOR CONSTRUCTION, INSTALLATION OR APPLICATION PURPOSES UNLESS CERTIFIED</b>		
CERTIFIED FOR:		
CUSTOMER ORDER NO.:	TAG NO.	
SHOP ORDER:	CERTIFIED BY:	DATE:

**CONCENTRIC REDUCER**

**INLET CONNECTION** 125# F.F. PER ANSI B16.1  
**OUTLET CONNECTION** 125# F.F. PER ANSI B16.1  
**BODY MATERIAL** CAST IRON

FLANGE SIZE		C	WT	MAX W.P.
A	B			
3	2	6.00 (152.4)	16	175 PSI
3	2 1/2	6.00 (152.4)	19	
4	2	7.00 (177.8)	24	
4	3	7.00 (177.8)	28	
5	3	8.00 (203.2)	32	
5	4	8.00 (203.2)	39	
6	3	9.00 (228.6)	39	
6	4	9.00 (228.6)	47	
6	5	9.00 (228.6)	50	
8	6	11.00 (279.4)	77	
10	8	12.00 (304.8)	120	150 PSI
12	10	14.00 (355.6)	180	
14	10	16.00 (406.4)	280	
14	12	16.00 (406.4)	300	

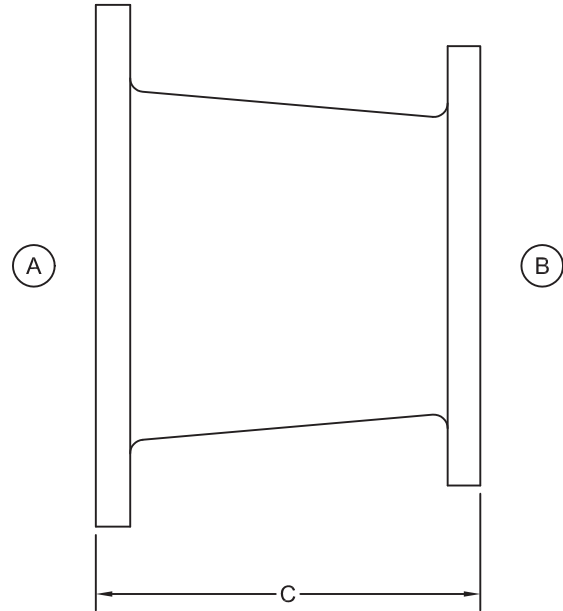


<b>NOT FOR CONSTRUCTION, INSTALLATION OR APPLICATION PURPOSES UNLESS CERTIFIED</b>		
CERTIFIED FOR:		
CUSTOMER ORDER NO.:	TAG NO.	
SHOP ORDER:	CERTIFIED BY:	DATE:

**CONCENTRIC REDUCER**

**INLET CONNECTION** 250# F.F. PER ANSI B16.1  
**OUTLET CONNECTION** 250# F.F. PER ANSI B16.1  
**BODY MATERIAL** CAST IRON

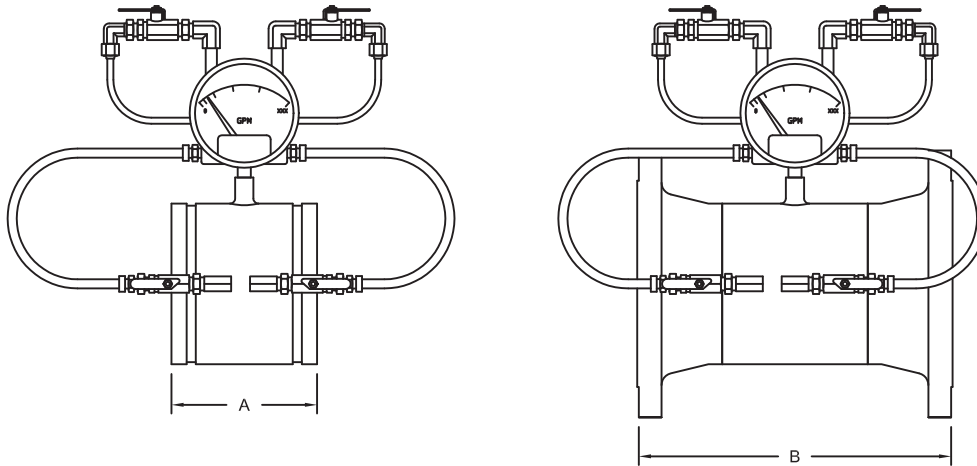
FLANGE SIZE		C	WT	MAX W.P.
A	B			
3	2	6.00 (152.4)	36	400 PSI
3	2 1/2	6.00 (152.4)	39	
4	2	7.00 (177.8)	44	
4	3	7.00 (177.8)	48	
5	3	8.00 (203.2)	52	
5	4	8.00 (203.2)	59	
6	3	9.00 (228.6)	59	
6	4	9.00 (228.6)	67	
6	5	9.00 (228.6)	70	
8	6	11.00 (279.4)	97	
10	8	12.00 (304.8)	140	
12	10	14.00 (355.6)	200	300 PSI
14	10	16.00 (406.4)	300	
14	12	16.00 (406.4)	320	



<b>NOT FOR CONSTRUCTION, INSTALLATION OR APPLICATION PURPOSES UNLESS CERTIFIED</b>		
CERTIFIED FOR:		
CUSTOMER ORDER NO.:	TAG NO.	
SHOP ORDER:	CERTIFIED BY:	DATE:

Supersedes all previous issues

**GERAND FLOWMETER**



GPM	VENTURI SYSTEM MODEL NO.	PIPE SIZE	METER RANGE MIN. & MAX. GPM	A		B	
				VENTURI LENGTH		150 # (RF)	300 # (RF)
				GROOVED	BUTT WELD		
25	K-25-1-1/4(616)	1-1/4"	12.5-50	Threaded only 3-3/4 (92.25)		---	---
50	K-50-2(685)	2"	25-100	Threaded only 4-1/4 (120.65)		---	---
100	K-100-2-1/2(746)	2-1/2"	50-200	3.00 (76.2)	4.00 (101.6)	9.50 (241.3)	10.00 (254)
150	K-150-3(766)	3"	75-300	3.50 (88.9)	4.38 (111.125)	9.00 (228.6)	10.25 (260.35)
200	K-200-3(766)	3"	100-400	3.50 (88.9)	4.38 (111.125)	9.00 (228.6)	10.25 (260.35)
250	K-250-4(744)	4"	125-500	3.50 (88.9)	3.75 (95.25)	9.50 (241.3)	10.75 (273.05)
300	K-300-4(744)	4"	150-600	3.50 (88.9)	3.75 (95.25)	9.50 (241.3)	10.75 (273.05)
450	K-450-4(744)	4"	225-900	3.50 (88.9)	3.75 (95.25)	9.50 (241.3)	10.75 (273.05)
500	K-500-5(715)	5"	250-1000	5.00 (127)		12.00 (304.8)	13.25 (336.55)
500	K-500-6(743)	6"	250-1000	6.00 (152.4)		13.00 (330.2)	14.25 (361.95)
750	K-750-6(743)	6"	375-1500	6.00 (152.4)		13.00 (330.2)	14.25 (361.95)
1000	K-1000-6(743)	6"	500-2000	6.00 (152.4)		13.00 (330.2)	14.25 (361.95)
1250	K-1250-6(743)	6"	625-2500	6.00 (152.4)		13.00 (330.2)	14.25 (361.95)
1500	K-1500-8(750)	8"	750-3000	7.00 (177.8)		15.00 (381)	16.25 (412.75)
2000	K-2000-8(750)	8"	1000-4000	7.00 (177.8)		15.00 (381)	16.25 (412.75)
2500	K-2500-8(750)	8"	1250-5000	7.00 (177.8)		15.00 (381)	16.25 (412.75)
3000	K-3000-8(750)	8"	1500-6000	7.00 (177.8)		15.00 (381)	16.25 (412.75)
3500	K-3500-10(755)	10"	1750-7000	8.00 (203.2)		16.00 (406.4)	17.75 (450.85)
4000	K-4000-10(755)	10"	2000-8000	8.00 (203.2)		16.00 (406.4)	17.75 (450.85)
4500	K-4500-10(755)	10"	2250-9000	8.00 (203.2)		16.00 (406.4)	17.75 (450.85)
5000	K-2000-12(750)	12"	2500-9000	12.00 (304.8)		21.00 (533.4)	22.75 (577.85)

Factory Mutual Approved.

<b>NOT FOR CONSTRUCTION, INSTALLATION OR APPLICATION PURPOSES UNLESS CERTIFIED</b>		
CERTIFIED FOR:		
CUSTOMER ORDER NO.:	TAG NO.	
SHOP ORDER:	CERTIFIED BY:	DATE:

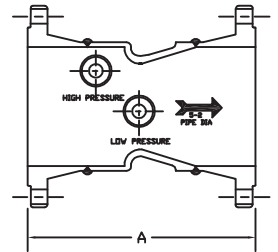
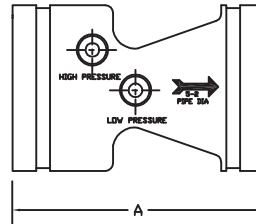
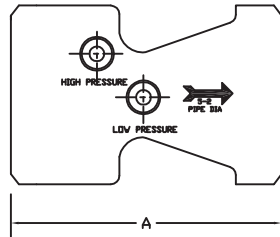
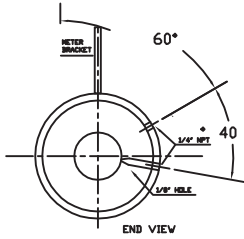
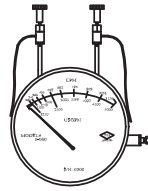
DIMENSIONS IN INCHES (mm)

Supersedes all previous issues

## GVI FLOWMETER

CONSTRUCTION & SPECIFICATIONS	
MATERIALS:	MACHINED 1018 / 1026 CARBON STEEL or CAST CARBON STEEL "WCB"
VALVES:	1/4" BRASS BALL
FLANGE OPT:	150# ANSI B 16.5 300# ANSI B 16.5
ID TAG:	POLYCARBONATE

METER DATA	
CONSTRUCTION:	ALUMINUM BODY
OPERATION:	DIAPHRAGM (BUNA CONVOLUTED)
ACCURACY:	+ 2% FULL SCALE
TEMPERATURE:	180°F / 80°C
PRESSURE:	500 PSIG - 3450 KPA
APPROX. WEIGHT:	3.75 LBS (1.7 KGS)
4" DIAL STANDARD - 6" DIAL AVAILABLE	



BUTT WELD / GROOVED

BUTT WELD

GROOVED

FLANGED

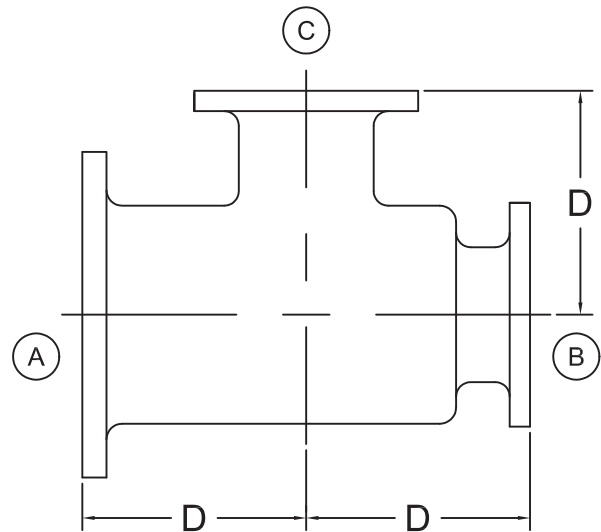
GPM	MODEL NO.	PIPE SIZE	METER RANGE MIN. & MAX. GPM	LENGTH (DIM A)		
				BUTT WELD / GROOVED	150 # (RF)	300 # (RF)
25	1.25-25	1-1/4	12.5-50	4.875 (123.8)	4.250 (107.9)	10.000 (254)
50	2-50	2	25-100	5.000 (127)	3.220 (81.8)	N/A
100	50-200	2-1/2	50-200	4.000 (101.6)	9.250 (235)	10.000 (254)
150	3-150	3	75-300	4.000 (101.6)	9.375 (238.1)	10.250 (260.3)
200	3-200	3	100-400	4.000 (101.6)	9.375 (238.1)	10.250 (260.3)
250	4-250	4	125-500	5.375 (136.5)	11.375 (288.9)	12.125 (308)
300	4-300	4	150-600	5.375 (136.5)	11.375 (288.9)	12.125 (308)
400	4-400	4	200-800	5.375 (136.5)	11.375 (288.9)	12.125 (308)
450	4-450	4	225-900	5.375 (136.5)	11.375 (288.9)	12.125 (308)
450	5-450	5	225-900	6.000 (152.4)	13.000 (330.2)	13.750 (349.3)
500	5-500	5	250-1000	6.000 (152.4)	13.000 (330.2)	13.750 (349.3)
500	6-500	6	250-1000	7.000 (177.8)	14.000 (355.6)	14.750 (374.7)
750	5-750	5	375-1500	6.000 (152.4)	13.000 (330.2)	13.750 (349.3)
1000	6-1000	6	500-2000	7.000 (177.8)	14.000 (355.6)	14.750 (374.7)
1250	6-1250	6	625-2500	7.000 (177.8)	14.000 (355.6)	14.750 (374.7)
1500	8-1500	8	750-3000	7.250 (184.1)	15.250 (387.3)	16.000 (406.4)
2000	8-2000	8	1000-4000	7.250 (184.1)	15.250 (387.3)	16.000 (406.4)
2500	8-2500	8	1250-5000	7.250 (184.1)	15.250 (387.3)	16.000 (406.4)
3000	8-3000	8	1500-6000	7.250 (184.1)	15.250 (387.3)	16.000 (406.4)
3500	10-3500	10	1750-7000	8.000 (203.2)	16.000 (406.4)	17.250 (438.1)
4000	10-4000	10	2000-8000	8.000 (203.2)	16.000 (406.4)	17.250 (438.1)
4500	10-4500	10	2250-9000	8.000 (203.2)	16.000 (406.4)	17.250 (438.1)
5000	12-5000	12	2500-10000	12.000 (304.8)	21.000 (533.4)	22.250 (565.2)

Factory Mutual Approved.

<b>NOT FOR CONSTRUCTION, INSTALLATION OR APPLICATION PURPOSES UNLESS CERTIFIED</b>		
CERTIFIED FOR:		
CUSTOMER ORDER NO.:	TAG NO.	
SHOP ORDER:	CERTIFIED BY:	DATE:

**STRAIGHT & REDUCING TEE**

**CONNECTIONS** 125# F.F. PER ANSI B16.1  
**BODY MATERIAL** CAST IRON  
**MAX W.P.** 175 PSI



FLANGE SIZE			D	WT	
A	B	C			
5	5	4	7.50 (190.5)	80	
5	4	4		73	
6	6	6	8.00 (203.2)	105	
6	6	5		105	
6	6	4		97	
6	5	4		91	
6	4	4		88	
6	4	3		86	
8	8	8		9.00 (228.6)	165
8	8	6			156
8	6	6	144		
10	10	11	11.00 (279.4)	270	
10	10	8		262	
10	8	6		220	
12	12	12	12.00 (304.8)	380	
12	12	10		362	
12	12	8		330	
12	10	8		320	

<b>NOT FOR CONSTRUCTION, INSTALLATION OR APPLICATION PURPOSES UNLESS CERTIFIED</b>		
CERTIFIED FOR:		
CUSTOMER ORDER NO.:	TAG NO.	
SHOP ORDER:	CERTIFIED BY:	DATE:



**SINGLE WALL FUEL TANK**

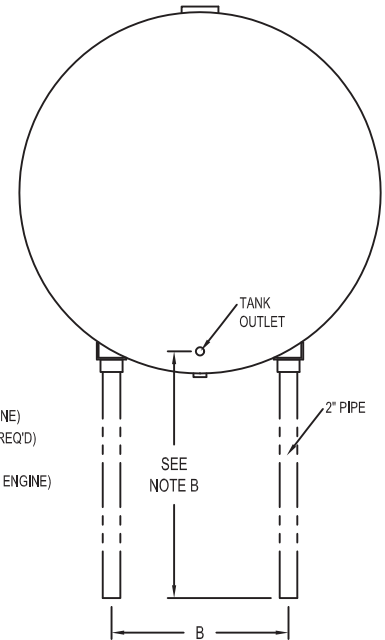
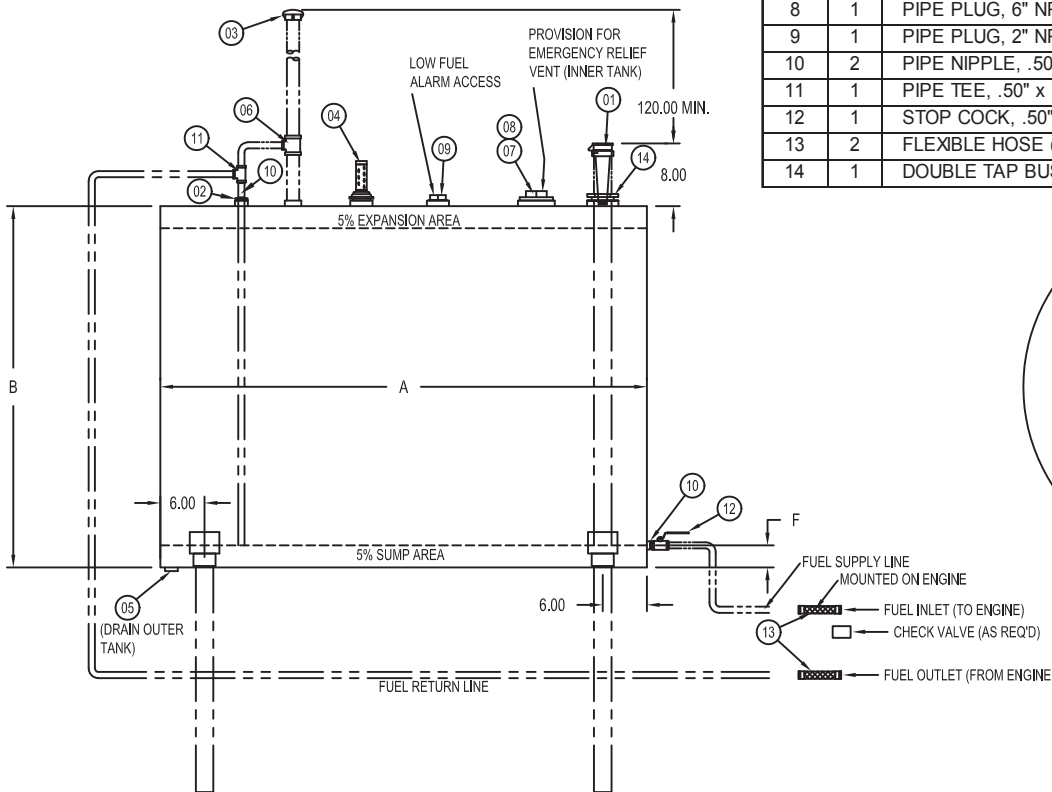
<b>CAPACITY</b>	150, 300, 500, 700, & 900 GAL		
<b>TYPE</b>	SINGE WALL, ABOVEGROUND, HORIZONTAL		
<b>MATERIAL</b>	MILD CARBON STEEL		
<b>TEST</b>	5 PSI		
<b>MIN GAUGE ATM</b>	HEADS:	10 GA	
	SHELL:	10 GA	
<b>PAINT</b>	INTERIOR:	NONE	EXTERIOR: GREY PRIMER
<b>CONSTRUCTION</b>	FLAT FLANGED HEADS LAP, WELD ALL EXTERIOR SEAMS ONLY		
<b>APPROVAL</b>	UL 142		

**NOTES**

- (A) ITEMS DISPLAYED IN PHANTOM LINES FURNISHED BY OTHERS TO CONFORM TO INDIVIDUAL JOB REQUIREMENTS
- (B) INSTALL TANK IN ACCORDANCE WITH REQUIREMENTS OF LOCAL AUTHORITIES. ARRANGE TANK AS CLOSE TO ENGINE AS POSSIBLE AND LOCATE TANK OUTLET ABOVE FUEL PUMP CENTERLINE
- (C) PITCH TANK TOWARD DRAIN .25" PER FOOT
- (D) FOR PROPER FUEL SUPPLY AND RETURN SIZE SEE ENGINE MANUFACTURER'S RECOMMENDATION

TANK SIZE (GAL)	A	B	C	F	WT
150	30.00 (762)	38.00 (965.2)	24.00 (609.6)	3.00 (76.2)	200
300	48.00 (1219.2)	42.00 (1066.8)	28.00 (711.2)	3.00 (76.2)	275
500	65.00 (1651)	48.00 (1219.2)	30.00 (762)	4.50 (114.3)	300
700	90.00 (2286)				500
900	113.00 (2870.2)				675

ITEM	QTY	DESCRIPTION
1	1	2" FILL CAP - WITH PROVISIONS FOR PADLOCK, COMBINED WITH REMOVABLE STRAINER ( MAX .06 MESH)
2	1	DOUBLE TAB BUSHINGS, 1" X .50"
3	1	VENT CAP, 2.0" NPT
4	1	DIRECT READING TANK GAUGE, 2" NPT
5	1	PIPE PLUG, 1" NPT
6	1	PIPE TEE, 2.0" x 2.0" x 0.50"
7	1	PIPE PLUG, 4" NPT (150 - 500 GAL)
8	1	PIPE PLUG, 6" NPT (700 - 900 GAL)
9	1	PIPE PLUG, 2" NPT
10	2	PIPE NIPPLE, .50" x CLOSE
11	1	PIPE TEE, .50" x .50" x .50"
12	1	STOP COCK, .50" NPT - WITH PROVISION FOR PADLOCK
13	2	FLEXIBLE HOSE (SUPPLIED WITH ENGINE)
14	1	DOUBLE TAP BUSHING, 3" x 2"



<b>NOT FOR CONSTRUCTION, INSTALLATION OR APPLICATION PURPOSES UNLESS CERTIFIED</b>			
CERTIFIED FOR:			
CUSTOMER ORDER NO.:		TAG NO.	
SHOP ORDER:		CERTIFIED BY:	
		DATE:	

## DOUBLE WALL FUEL TANK

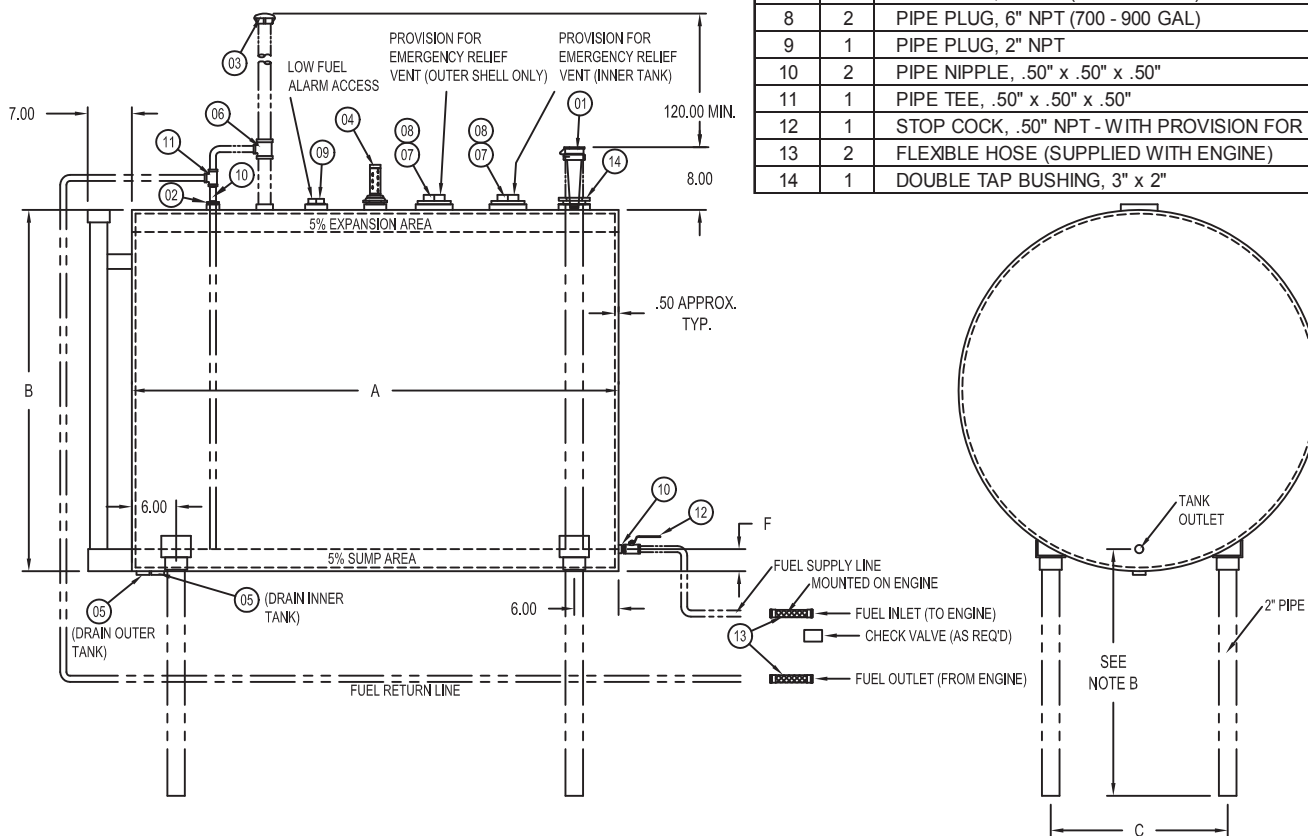
<b>CAPACITY</b>	120, 185, 300, 500, 700, & 900 GAL	
<b>TYPE</b>	DOUBLE WALL TYPE I 360°, ABOVEGROUND, HORIZONTAL	
<b>MATERIAL</b>	MILD CARBON STEEL	
<b>TEST</b>	5 PSI	
<b>MIN GAUGE ATM</b>	INNER HEADS: 12 GA	OUTER HEADS: 10 GA
	INNER SHELL: 12 GA	OUTER SHELL: 10 GA
<b>PAINT</b>	INTERIOR: NONE	EXTERIOR: GREY PRIMER
<b>CONSTRUCTION</b>	FLAT FLANGED HEADS LAP, WELD ALL EXTERIOR SEAMS ONLY	
<b>APPROVAL</b>	UL 142	

**NOTES**

- (A) ITEMS DISPLAYED IN PHANTOM LINES FURNISHED BY OTHERS TO CONFORM TO INDIVIDUAL JOB REQUIREMENTS
- (B) INSTALL TANK IN ACCORDANCE WITH REQUIREMENTS OF LOCAL AUTHORITIES. ARRANGE TANK AS CLOSE TO ENGINE AS POSSIBLE AND LOCATE TANK OUTLET ABOVE FUEL PUMP CENTERLINE
- (C) PITCH TANK TOWARD DRAIN .25" PER FOOT
- (D) FOR PROPER FUEL SUPPLY AND RETURN SIZE SEE ENGINE MANUFACTURER'S RECOMMENDATION

TANK SIZE (GAL)	A	B	C	F	WT
120	41.00 (1041.4)	31.00 (787.4)	24.00 (609.6)	3.00 (76.2)	295
185	40.00 (1016)	39.00 (990.6)			380
300	60.00 (1524)				705
500	65.00 (1651)	49.00 (1244.6)	4.50 (114.3)	4.50 (114.3)	970
700	90.00 (2286)				1600
900	115.00 (2921)				1900

ITEM	QTY	DESCRIPTION
1	1	2" FILL CAP - WITH PROVISIONS FOR PADLOCK, COMBINED WITH REMOVABLE STRAINER ( MAX .06 MESH)
2	1	DOUBLE TAB BUSHINGS, 1" X .50"
3	1	VENT CAP, 2.0" NPT
4	1	DIRECT READING TANK GAUGE, 2" NPT
5	2	PIPE PLUG, 1" NPT
6	1	PIPE TEE, 2.0" x 2.0" x 0.50"
7	2	PIPE PLUG, 4" NPT (120 - 500 GAL)
8	2	PIPE PLUG, 6" NPT (700 - 900 GAL)
9	1	PIPE PLUG, 2" NPT
10	2	PIPE NIPPLE, .50" x .50" x .50"
11	1	PIPE TEE, .50" x .50" x .50"
12	1	STOP COCK, .50" NPT - WITH PROVISION FOR PADLOCK
13	2	FLEXIBLE HOSE (SUPPLIED WITH ENGINE)
14	1	DOUBLE TAP BUSHING, 3" x 2"



<b>NOT FOR CONSTRUCTION, INSTALLATION OR APPLICATION PURPOSES UNLESS CERTIFIED</b>	
CERTIFIED FOR:	
CUSTOMER ORDER NO.:	TAG NO.
SHOP ORDER:	CERTIFIED BY: DATE:

# Xylem |'zīləm|

- 1) The tissue in plants that brings water upward from the roots;
- 2) a leading global water technology company.

We're 12,500 people unified in a common purpose: creating innovative solutions to meet our world's water needs. Developing new technologies that will improve the way water is used, conserved, and re-used in the future is central to our work. We move, treat, analyze, and return water to the environment, and we help people use water efficiently, in their homes, buildings, factories and farms. In more than 150 countries, we have strong, long-standing relationships with customers who know us for our powerful combination of leading product brands and applications expertise, backed by a legacy of innovation.

**For more information on how Xylem can help you, go to [www.xylem.com](http://www.xylem.com)**



Xylem Inc.  
8200 N. Austin Avenue  
Morton Grove, Illinois 60053  
Phone: (847) 966-3700  
Fax: (847) 965-8379  
[www.acfirepump.com](http://www.acfirepump.com)

A-C Fire Pump is a trademark of Xylem Inc. or one of its subsidiaries.  
© 2014 Xylem Inc. AC-100 June 2014