



Products for the Agriculture Industry



Reliability begins with quality components from SKF

There are a lot of demands on your agricultural operations throughout the planting and harvesting seasons. SKF is your source for a wide range of quality replacement ag bearing and seal components. A global OEM supplier to automotive, heavy duty truck and agricultural equipment manufacturers, SKF manufactures components that embody over 100 years of expertise in rotating equipment. All parts are not only tested for durability in SKF labs, but proven in real-world applications to assure trouble-free operation.





Housed bearings

Pillow Block Series: RAK, VAK, TAK, RAS, VAS & SAS

2- & 4-Bolt Flange Block Series: RCJ, VCJ, TCJ, SCJ, RCJT, VCJT, TCJT, SCJT

Commonly known as pillow and flange blocks, these bearings feature cast iron housings and adapter bearing inserts. Pillow blocks are designed to provide shaft support where mounting surface is parallel to the shaft axis. These units usually have slotted bolt holes for adjustment during mounting. Pillow blocks normally fall into one of two classifications: High Center Line or Standard Units. Flange blocks are commonly used where a shaft passes through the machine at a right angle. These units usually have a 4-bolt mounting system. However, when the mounting area is restricted, 2-bolt units are available. All housed units come with eccentric locking collar and the proper adapter bearing.

Popular Part Numbers: RAK 3/4, RAK 1, RCJ 1, SAS 1, VAK 1, VCJT 1, RAK 1-1/8, RAK 1-1/4, RAK 1-3/8, RAK 1-7/16, RAK 1-1/2, RAK 1-3/4, RCJ 1-1/2, RCJ 1-15/16, RCJ1-1/4 and SCJT 1

Pillow block/Flange units					
Series mounted bearings	Insert bearings	G-KRRB G1103KRRB	GRA-RRB GRA103RRB	G-PPB G1103PPB3	GYA-RRB GYA103RRB
Pillow block Standard (Low Base to Center Height)	RAK	VAK	TAK	-	
Pillow block High Center Line (High Base to Center Height)	RAS	VAS	-	SAS	
4-Bolt flange 	RCJ	VCJ	TCJ	SCJ	
2-Bolt flange 	RCJT	VCJT	TCJT	SCJT	

Pressed steel flange

A low cost, easily installed ball bearing unit available in several bolt hole patterns for light duty, slow speed applications and offered in relubricatable and non-relubricatable designs.

Popular Part Numbers: 47-MS, 47-MST, 52-MS, 52-MST, 52-MSTR, 62-MS, 62-MSTR, 72-MS, 80-MS, G80-MSA, 85-MS





Wide inner ring (adapter) bearings

Non-relubricatable series: RA-RR, RA-RRB, KRR, KRRB & ER
Relubricatable series: G-PPB, GRA-RRB, G-KRR, G-KRRB, GN-KRRB and GYA-RRB

Featuring a wide inner ring for shaft support, adapter bearings are designed for use in a variety of applications including balers, blowers, choppers, cutters, combines, disc implements, loaders, rakes, spreaders and more. These parts incorporate an advanced sealing design, which locks in the lubricant and gives unsurpassed protection from dirt, dust and abrasion. Bearings come with single lip seals to exclude contaminants and are offered in cylindrical and spherical outside diameters, in both relubricatable (G prefix) and non-relubricatable configurations. Also offered with a triple lip seal that solves the most difficult sealing problems because they are capable of withstanding the toughest environments of abrasive dirt and moisture.

Popular Part Numbers: RA010-RRB, RA012-RRB, RA014-RRB, GRA100-RRB, RA100-RR, RA100-RRB, RA102-RRB, GRA103-RRB2, RA103-RR2, RA103-RRB, RA103-RRB2, RA104-RRB, RA106-RRB, RA108-RRB, G1100-KRRB, G1104-KRRB, G1106-KRRB, G1108-KRRB, G1112-KRRB, G1115-KRRB, GYA100-RRB, GRA108-RRB, G1200-KRRB, GRA103-RRB, GRA106-RRB, RA112-RRB, GRA012-RRB

Special agricultural bearings

A complete line featuring non-standard I.D., O.D. and radius dimensions, designed for a variety of applications such as cotton pickers, forage harvesters, cultivators and garden tractors.

Popular Part Numbers: 202-NPP5, 203-KRR2, P203-PP10, 204-RR8, P204-RR6, 205-KRP2, 205-PPB7, 6202-FFB, 6202-FFLB, 6204-FREN, 204-RY2, 205-KRP2, 204-RR7, 6206-GGH, 6203-FFA

SKF is your source for a wide range of high quality planter bearings for the following applications:

Disc Opener



205-KRP2
204-RY2

Gauge Wheel



5203-KYY2

Press Wheel



BB203KRR2FD
203-KRR2
6203-2RLYD
6203-VSP14
538266 (seal)

Closing Wheel



BB203KRR2FD
203-KRR2
5203-KYY2



Disc harrow bearings

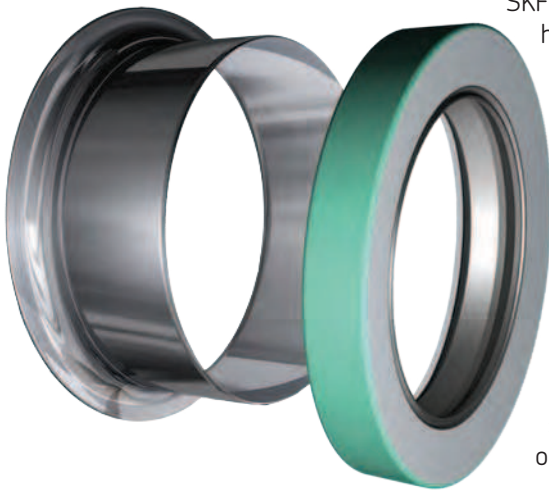
Balanced design identified by deep races, large balls and extra wide, heavy duty shock resistant inner or outer rings, designed for use where severe contaminant conditions exist. These bearings incorporate a highly effective seal design molded to an exterior shroud cap to provide exceptionally effective protection against the loss of lubricant and the entrance of wet or abrasive contaminants. Round, square and hex bore bearings offered in spherical and cylindrical outside diameters, in both relubricatable and non-relubricatable configurations.

Popular Part Numbers: 205-KRRB2, GW208-PPB8, W208-PP5, W208-PP8, W208-PPB12, W208-PPB5, W208-PPB6, W208-PPB7, W209-PPB2, W209-PPB4, W209-PPB5, GW211-PP3, GW211-PPB2, GW211-PPB3, W211-PPB3, W211-PPB6, DHU491-A, DHU 2-3/16, W210-PP10

Disc harrow bearings now available in bulk part numbers:

BW211PPB3	Bulk pack of 8
BW209PPB4	Bulk pack of 12
BW208PP5	Bulk pack of 8
BGW211PPB2	Bulk pack of 8
BDHU491A	Bulk pack of 6
BW208PPB5	Bulk pack of 8
BDHU2316	Bulk pack of 8
BW210PP10	Bulk pack of 8

Agricultural seals and Speedi-Sleeve® shaft repair kits



SKF agricultural seals come in various configurations and rubber materials. The seal can have multiple lips that not only seal in lubricant but also keep out contaminants. The various rubber materials are configured to provide optimal performance in various conditions such as high temperature, lubricant compatibility and performance in an aggressive contaminated environment.

Consisting of a thin wall shaft repair sleeve and a simple installation tool, SKF Speedi-Sleeve shaft repair kits can take a worn shaft from scored to restored in less than 5 minutes.

Speedi-Sleeve installation is possible without having to remove the shaft, and requires no change in seal size. Unlike time-consuming shaft regrinding and refinishing techniques that can produce poor-quality sealing surfaces, Speedi-Sleeve installation ensures an ideal outer sealing surface every time.

Engineered from the finest AISI 304 stainless steel, Speedi-Sleeve sizes covers shaft diameters from .5" to 8" (12mm to 200mm).



Most popular agricultural bearings (in sales ranking order)

Brg. Part #	Part Description
RA100-RRB	Adapter brg.,non-relubricatable,spherical o.d.
P204-RR6	Special ag brg.-mower spindle-2 seals
RA100-RR	Adapter brg.,non-relubricatable,cylindrical o.d.
GRA100-RRB	Adapter brg.,relubricatable,spherical o.d.
RA103-RRB2	Adapter brg.,non-relubricatable,spherical o.d.
6202-FFB	Special ag brg.-2 seals w/5/8" bore
203-KRR2	Special ag brg.-2 seals w/wide inner ring
GRA103RRB2	Adapter brg.,relubricatable,spherical o.d.
RA012-RRB	Adapter brg.,non-relubricatable,spherical o.d.
G1100-KRRB	Adapter brg.,relubricatable,spherical o.d.
RA104-RRB	Adapter brg.,non-relubricatable,spherical o.d.
204-RY2	Special ag brg.-w/5/8" bore for planter & double disc opener
RA108-RRB	Adapter brg.,non-relubricatable,spherical o.d.
RA102-RRB	Adapter brg.,non-relubricatable,spherical o.d.
G1108-KRRB	Adapter brg.,relubricatable,spherical o.d.
RAK 1	Cast iron pillow block w/wide inner ring brg.
GRA104-RRB	Adapter brg.,relubricatable,spherical o.d.
RA106-RRB	Adapter brg.,non-relubricatable,spherical o.d.
GRA108-RRB	Adapter brg.,relubricatable,spherical o.d.
GVA100-RRB	Adapter brg.,relubricatable,spherical o.d.
RA014-RRB	Adapter brg.,non-relubricatable,spherical o.d.
G1112-KRRB	Adapter brg.,relubricatable,spherical o.d.
RA103-RRB	Adapter brg.,non-relubricatable,spherical o.d.
RA103-RR2	Adapter brg.,non-relubricatable,cylindrical o.d.
G1104-KRRB	Adapter brg.,relubricatable,spherical o.d.
G1106-KRRB	Adapter brg.,relubricatable,spherical o.d.
RA010-RRB	Adapter brg.,non-relubricatable,spherical o.d.
205-PPB7	Special ag brg.-3 seals for cultivator w/wide inner ring
W208-PP5	Disc harrow, non-relubricatable w/3 seals, sq. bore-cylindrical o.d.
W208-PPB5	Disc harrow, non-relubricatable w/3 seals, sq. bore-spherical o.d.
P203-PP10	Special ag brg.-2 seals w/5/8" bore for disc & mower
6202-FFLB	Special ag brg.-2 seals w/5/8" bore & snap ring
RA012-RR	Adapter brg.,non-relubricatable,cylindrical o.d.
G1103KRRB3	Adapter brg.,relubricatable,spherical o.d.
52-MS	3-hole pressed steel flange housing, non-relubricatable
RAK 1-1/4	Cast iron pillow block w/wide inner ring brg.
RA108-RR	Adapter brg.,non-relubricatable,cylindrical o.d.
52-MST	2-hole pressed steel flange housing, non-relubricatable
G1107-KRRB	Adapter brg.,relubricatable,spherical o.d.
DHU491-A	Disc harrow, relubricatable w/3seals, round bore
VCJT 1	2-hole cast iron flange block
RAK 1-1/2	Cast iron pillow block w/wide inner ring brg.
205-KRP2	Special ag brg. w/2 seals & extended inner ring on one side
GRA103-RRB	Adapter brg.,relubricatable,spherical o.d.
GRA106-RRB	Adapter brg.,relubricatable,spherical o.d.
G1115-KRRB	Adapter brg.,relubricatable,spherical o.d.
6204-FREN	Special ag brg.-2 seals w/extended inner ring
62-MS	3-hole pressed steel flange housing, non-relubricatable
G1200-KRRB	Adapter brg.,relubricatable,spherical o.d.
204-RR7	Special ag brg.w/2 seals & 3/4" bore for disc applications
W209-PPB4	Disc harrow, non-relubricatable w/3 seals, round bore-spherical o.d.
RCJ 1-1/2	Cast iron flange block w/wide inner ring brg.
204-RR8	Special ag brg.-2 seals w/5/8" bore
RA107-RRB	Adapter brg.,non-relubricatable,spherical o.d.
5203-KYY2	Special ag brg. w/2 seals for gauge & closing wheel
RA112-RRB	Adapter brg.,non-relubricatable,spherical o.d.
GRA012-RRB	Adapter brg.,relubricatable,spherical o.d.
72-MS	3-hole pressed steel flange housing, non-relubricatable
80-MS	4-hole pressed steel flange housing, non-relubricatable
BB203KRR2FD	Special ag brg. for press & closing wheel
W208-PP8	Disc harrow, non-lubricatable w/3 seals, sq. bore-cylindrical o.d.
6206-GGH	Special ag brg., w/2 seals & special bore
205-KRRB2	Disc harrow, hex bore for implements & conveyors
GW211-PPB2	Disc harrow, relubricatable w/3seals, round bore
6203-FFA	Special ag brg., w/2 seals & thick outer ring
RAK 3/4	Cast iron pillow block w/wide inner ring brg.



Most popular agricultural seals (in sales ranking order)

Seal Part #	Shaft/ID	OD	Width	Speedi-Sleeve
22550	2.25	3.375	0.375	99225
22532	2.25	3.376	0.438	99225
21352	2.125	3.376	0.375	99212
24898	2.5	3.256	0.375	99250
12165	1.219	1.983	0.475	99123
22558	2.25	3.376	0.438	99225
12407	1.25	1.983	0.25	99125
17617	1.75	2.722	0.359	99174
16069	1.625	2.332	0.438	99162
17404	1.75	2.565	0.313	99174
12437	1.25	1.987	0.25	99125
17413	1.75	2.569	0.313	99174
11164	1.125	1.785	0.469	99112
16289	1.625	2.566	0.438	99162
14974	1.5	2.332	0.5	99149
16657	1.688	2.332	0.313	99168
12428	1.25	1.987	0.25	99125
14975	1.5	2.332	0.39	99149
20044	2	3.066	0.25	99199
10035	1	1.785	0.469	99100
7443	0.75	1.254	0.256	99076
16284	1.625	2.566	0.25	99162
17607	1.75	2.721	0.438	99174
20148	2	3.628	0.25	99199
8660	0.875	1.379	0.25	99087
15190	1.5	2.627	0.25	99149
14247	1.438	2.254	0.313	99143
19887	2	2.879	0.313	99199
15005	1.5	2.378	0.313	99149
12411	1.25	1.983	0.406	99125
19762	2	2.627	0.313	99199
11223	1.125	1.878	0.25	99112
12456	1.25	2.004	0.25	99125
12330	1.25	1.504	0.125	99125
22354	2.25	3.005	0.375	99225
538266	1.00	0.995	0.270	—

The contents of this publication are the copyright of the publisher and may not be reproduced (even extracts) unless written permission is granted. Every care has been taken to ensure the accuracy of the information contained in this publication but no liability can be accepted for any loss or damage whether direct, indirect or consequential arising out of the use of the information contained herein. SKF reserves the right to alter any part of this publication without prior notice.

SKF is a registered trademark of the SKF Group.

© 2011 SKF Group

457187 (10/11)

SKF VSM
890 State Street
Suite 200
Elgin, IL 60123
800-882-0008
www.vsm.skf.com