

Parts List

8105.182 Master



Table of Contents

Introduction	2
Specially approved products.....	2
Product Description	3
Products included.....	3
The data plate.....	3
Exploded Views	4
8105.182.....	4
Spare Parts	5
8105.182.....	5

Introduction

Purpose of this manual

The purpose of this manual is to provide necessary information on spare parts and accessories order.

Disclaimer

Always use genuine Grindex parts. The use of other spare parts or accessories can invalidate any claims for warranty or compensation. Grindex does not take any responsibility for damages that are caused by the use of non-original parts. For more information, contact your local sales and service representative.

Data for ordering spare parts

The following information is needed for spare part orders:

- Serial number of the product
- Part number
- Quantity of bulk material, see * in tables

Specially approved products

Qualification of personnel

Only Grindex or Grindex-authorized service personnel may undertake repair work on Ex-approved products.

Dimensional accuracy inspection

Spare parts marked with (Ex) after the part number are subject to dimensional accuracy inspection.

Product Description

Products included

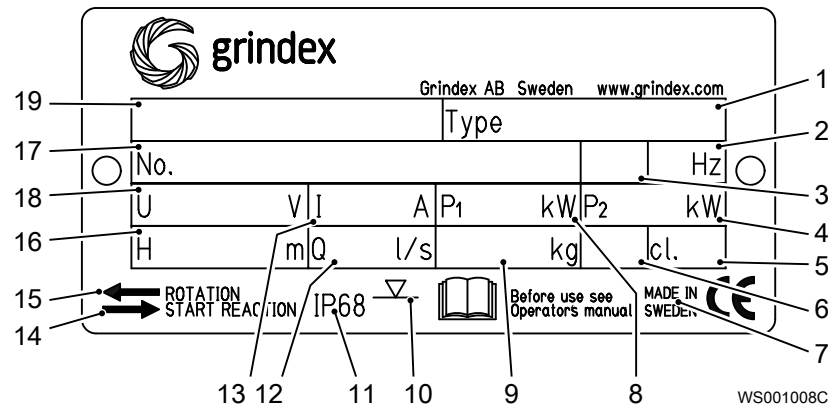
Pump model	Standard	EX	MSHA	Drainage	Sludge
Master 8105.182	X			X	

The data plate

Introduction

The data plate is a metal label located on the main body of the pump. The data plate lists key product specifications.

The data plate

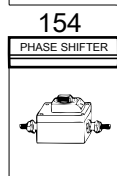
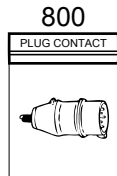
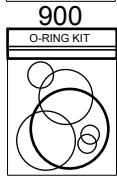
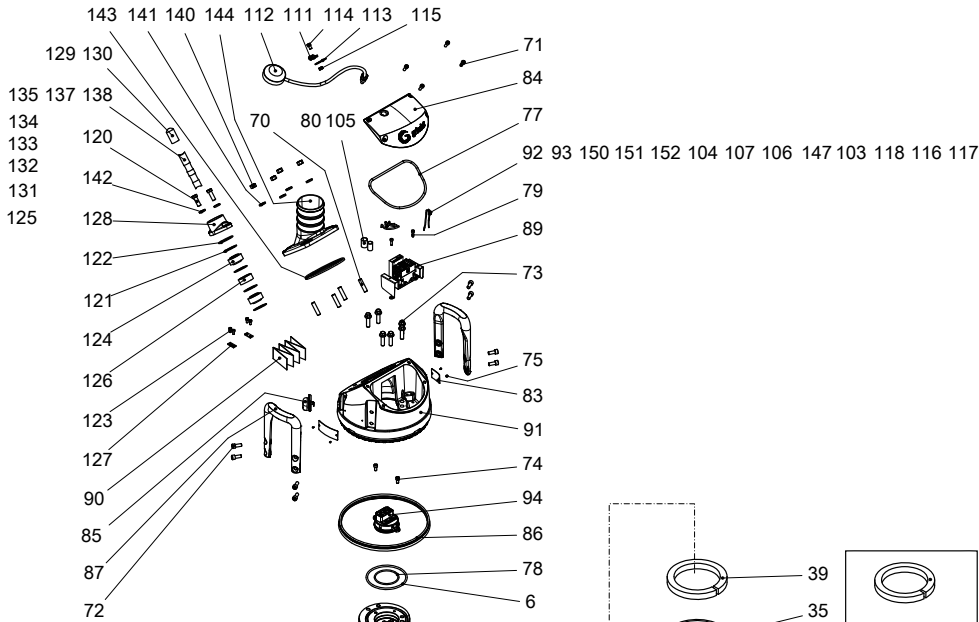


1. Pump type number
2. Frequency
3. Phases, type of current
4. Rated shaft power
5. Thermal class
6. Locked rotor code-letter
7. Country of origin
8. Maximum power consumption
9. Product weight
10. Maximum submersion depth
11. Degree of protection
12. Maximum capacity
13. Rated current
14. Direction of the start reaction
15. Direction of the impeller rotation
16. Maximum head
17. Serial number
18. Rated voltage
19. Pump model

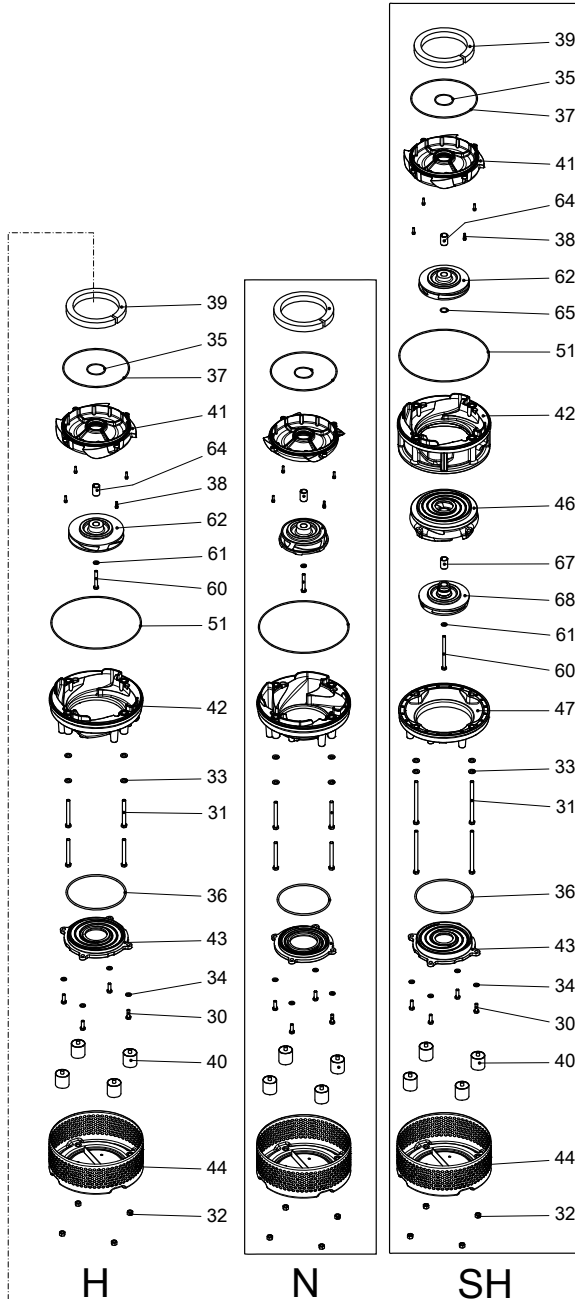
Product approvals for hazardous locations

Exploded Views

8105.182



155
153



20148B_expl_view_8105_182

Spare Parts

8105.182

Pos. No	Part. No	Denomination	Qty/Version
			182
1	410 076	Hexagon flange screw M10X45-A2-70	4
2	410 076	Hexagon flange screw M10X45-A2-70	3
3	410 810	Retaining ring SGA 30	1
4	410 487	O-ring 19.2X3 FPM	3
6	130 943	O-ring 139.3X5.7 NBR	1
7	132 422	O-ring 219.3X5.7 NBR	1
8	140 078	O-ring 156X3 NBR	1
9	410 022	O-ring 175X3 NBR	1
10	410 023	O-ring 52.5X3.0 FPM	1
11	410 100	Ball bearing 30X72X30.2 MM	1
12	50 287 04	Ball bearing 20X52X15 MM	1
13	410 053	Oil ISO VG 32	*
14	50 898 00	Marking tape	1
15	133 063	Inspection screw	3
16	51 026 00	Bearing holder	1
17	51 034 01	Shaft unit	1
18	50 863 00	Cooling jacket	1
19	51 060 00	Seal ring	1
20	51 755 51	Mechanical seal	1
21	51 757 00	Stator housing	1
22	51 049 03	Adapter	1
26	50 136 00	Instruction label	1
30	410 004	Hexagon head screw M10X30-A2-70	4
31	410 075	Hexagon head screw M12X110-A2-70	4
31	410 403	Hexagon head screw M12X180-A2-70	4
32	410 011	Hexagon nut M12-A4-70	4
33	132 274	Plain washer 12-A2-170	4
34	50 022 26	Plain washer 10-A4-170HV	4
35	410 155	O-ring 62X3.0 FPM	1
36	410 087	O-ring 174.3X5.7 NBR	1

Pos. No	Part. No	Denomination	Qty/Version	
				182
36	410 090	O-ring 199.3X5.7 NBR	SH H	1
37	410 895	O-ring 230.0X4.0 FPM		1
38	50 020 04	Hex.socket hd screw M6X20-A4-70		4
39	410 107	Pressure equalizer L=650 MM		1
40	51 045 00	Damper complete		4
41	51 051 00	Seal housing cov.coa	N	1
41	51 050 00	Seal housing cov.coa	H	1
41	51 317 00	Seal housing cov.coa	SH	1
42	51 022 00	Diffuser coat. NBR	N	1
42	51 022 01	Diffuser coat. PU	N	1
42	51 021 00	Diffuser coat. NBR	H	1
42	51 021 01	Diffuser coat. PU	H	1
42	51 315 00	Diffuser coat. NBR	SH	1
42	51 315 01	Diffuser coat. PU	SH	1
43	51 053 00	Suction cover	N	1
43	51 052 00	Suction cover	H Material suction cover: Hard iron	1
43	51 389 01	Suction cover	H Material suction cover: Stainless steel	1
43	51 313 00	Suction cover	SH Material suction cover: Hard iron	1
44	51 054 00	Strainer		1
46	51 314 00	Diffuser coat.		1
47	51 316 00	Diffuser coat. NBR	SH	1
47	51 316 01	Diffuser coat. PU	SH	1
51	410 886	O-ring 315X4 NBR		1
55	51 008 08	Stator 18-15-2b	6-leads 3-phase 60 Hz 2- poles 200V-208V D	1
55	51 008 02	Stator 18-15-2b	6-leads 3-phase 50 Hz 2- poles 220V-240V D	1
55	51 008 06	Stator 18-15-2b	6-leads 3-phase 60 Hz 2- poles 220V-240V D	1
55	51 008 04	Stator 18-15-2b	9-leads 3-phase 60 Hz 2- poles 220V-240V Y// 9-leads 3-phase 60 Hz 2- poles 440V-480V YSER	1

Pos. No	Part. No	Denomination	Qty/Version	
			182	
55	51 008 11	Stator 18-15-2b	12-leads 3-phase 60 Hz 2-poles 220V-230V D// 12-leads 3-phase 60 Hz 2-poles 440V-460V DSER 12-leads 3-phase 60 Hz 2-poles 380V-400V Y//	1
55	51 008 16	Stator 18-15-2b	6-leads 3-phase 50 Hz 2-poles 380V-400V D 6-leads 3-phase 60 Hz 2-poles 440V-480V D 6-leads 3-phase 50 Hz 2-poles 660V-690V Y	1
55	51 008 14	Stator 18-15-2b	3-leads 3-phase 60 Hz 2-poles 460V-480V Y	1
55	51 008 10	Stator 18-15-2b	6-leads 3-phase 60 Hz 2-poles 380V-400V D	1
55	51 008 01	Stator 18-15-2b	6-leads 3-phase 50 Hz 2-poles 415V-440V D	1
55	51 008 03	Stator 18-15-2b	6-leads 3-phase 50 Hz 2-poles 500V D 6-leads 3-phase 60 Hz 2-poles 575V-600V D	1
55	51 008 15	Stator 18-15-2b	3-leads 3-phase 60 Hz 2-poles 575V-600V Y	1
55	51 008 05	Stator 18-15-2b	6-leads 3-phase 50 Hz 2-poles 525V-550V D 6-leads 3-phase 50 Hz 2-poles 1000V Y	1
56	410 034	Closed-end splice 3-6(AWG 12-10) L=18	9-leads 3-phase 60 Hz 2-poles 220V-240V Y// 9-leads 3-phase 60 Hz 2-poles 440V-480V YSER 12-leads 3-phase 60 Hz 2-poles 440V-460V DSER 12-leads 3-phase 60 Hz 2-poles 380V-400V Y//	1
56	410 034	Closed-end splice 3-6(AWG 12-10) L=18	9-leads 3-phase 60 Hz 2-poles 220V-240V Y// 9-leads 3-phase 60 Hz 2-poles 440V-480V YSER 12-leads 3-phase 60 Hz 2-poles 440V-460V DSER 12-leads 3-phase 60 Hz 2-poles 380V-400V Y//	2

Pos. No	Part. No	Denomination	Qty/Version
			182
56	410 034	Closed-end splice 3-6(AWG 12-10) L=18	3
		9-leads 3-phase 60 Hz 2-poles 220V-240V Y//	
		9-leads 3-phase 60 Hz 2-poles 440V-480V YSER	
		12-leads 3-phase 60 Hz 2-poles 440V-460V DSER	
		12-leads 3-phase 60 Hz 2-poles 380V-400V Y//	
60	410 070	Hexagon head screw M10X70-A2-70	1
		N	
		H	
60	410 475	Hexagon head screw M10X140-A2-70	1
		SH	
61	50 022 26	Plain washer 10-A4-170HV	1
62	51 017 50	Impeller	1
		N 50Hz 3-phase Maximum temperature 40 DC Material Hard-Iron TM	
62	51 017 52	Impeller	1
		N 60Hz 3-phase Maximum temperature 40 DC Material Hard-Iron TM	
62	51 016 50	Impeller	1
		H 50Hz 3-phase Maximum temperature 40 DC Material Hard-Iron TM	
62	51 016 54	Impeller	1
		H 60Hz 3-phase Maximum temperature 40 DC Material Hard-Iron TM	
62	51 385 02	Impeller	1
		H 50Hz 3-phase Maximum temperature 40 DC Material Stainless steel, castings	
62	51 385 03	Impeller	1
		H 60Hz 3-phase Maximum temperature 40 DC Material Stainless steel, castings	
62	-	Impeller	1
62	51 328 00	Impeller	1
		SH 50Hz 3-phase Maximum temperature 40 DC Material Hard-Iron TM	
62	51 328 01	Impeller	1
		SH 60Hz 3-phase Maximum temperature 40 DC Material Hard-Iron TM	
64	51 756 00	Sleeve unit	1
65	133 064	O-ring 19.2X3 NBR	1
67	51 756 00	Sleeve unit	1
68	51 327 00	Impeller	1
		SH 50Hz 3-phase Maximum temperature 40 DC Material Hard-Iron TM	
68	51 327 01	Impeller	1
		SH 60Hz 3-phase Maximum temperature 40 DC Material Hard-Iron TM	
70	410 171	Stud M12X35-A2-70	4

Pos. No	Part. No	Denomination	Qty/Version
			182
71	50 021 33	Hex.socket hd screw M8X20-A4-80	4
72	50 022 17	Hex.socket hd screw M10X25-A4-70	8
73	410 887	Hexagon flange screw M12X45-A2-70	6
74	140 049	Hex.socket hd screw M8X16-A2-70	2
75	410 000	Drive screw 4X5-A2/A4	4
77	132 314	O-ring 189.3X5.7 NBR	1
78	410 623	O-ring 78X4 NBR	1
79	50 020 04	Hex.socket hd screw M6X20-A4-70	2
80	410 123	Insulating hose D=16 MM	*
80	410 056	Insulating hose D=14 MM	*
81	51 800 00	Sticker	1
83	50 888 00	Plate-blank	1
84	50 862 00	Cover	1
84	50 862 01	Cover	1
85	50 869 00	Air release valve	1
86	51 060 00	Seal ring	1
87	50 857 00	Handle	2
88	50 992 00	Sticker CUT HAZARD	1
89	50 993 38	Contacteur unit	1
		Contacteur unit 50Hz 3- phase 220V - 240V Not CSA approved Overload supervision	
		Contacteur unit 50Hz 220V - 240V Float switch Not CSA approved	
89,1	50 995 00	Holder	1
89,4	51 511 07	Motor protector SMART	1
89,5	410 815	Contacteur	1
89,6	410 008	Hex.socket hd screw M4X16-A2-70	2
89,7	410 012	Lock nut	2
89,8	410 008	Hex.socket hd screw M4X16-A2-70	2
89,9	410 012	Lock nut	2
89,17	50 900 62	Single-core cable	1
89,17	51 076 00	Cable set	1
89,25	410 822	Overload relay	1

Pos. No	Part. No	Denomination	Qty/Version
			182
89	50 993 40	Contactor unit	1
		Contactor unit 50Hz 3-phase 380V - 400V Not CSA approved Overload supervision	
		Contactor unit 50Hz 3-phase 415V - 440V Not CSA approved Overload supervision	
		Contactor unit 50Hz 380V - 400V Float switch Not CSA approved	
89,1	50 995 00	Holder	1
89,4	51 511 05	Motor protector SMART	1
89,5	410 814	Contactor	1
89,6	410 008	Hex.socket hd screw M4X16-A2-70	2
89,7	410 012	Lock nut	2
89,8	410 008	Hex.socket hd screw M4X16-A2-70	2
89,9	410 012	Lock nut	2
89,17	50 900 62	Single-core cable	1
89,25	410 819	Overload relay	1
89,28	51 076 00	Cable set	1
89	50 993 29	Contactor unit	1
		Contactor unit 50Hz 3-phase 500V - 500V Not CSA approved Overload supervision	
89,1	50 995 00	Holder	1
89,4	51 511 05	Motor protector SMART	1
89,5	410 814	Contactor	1
89,6	410 008	Hex.socket hd screw M4X16-A2-70	2
89,7	410 012	Lock nut	2
89,8	410 008	Hex.socket hd screw M4X16-A2-70	2
89,9	410 012	Lock nut	2
89,17	50 900 62	Single-core cable	1
89,25	410 818	Overload relay	1
89,28	51 076 00	Cable set	1
89	50 993 54	Contactor unit	1
		Contactor unit 50Hz 3-phase 525V - 550V Not CSA approved Overload supervision	
89,1	50 995 00	Holder	1
89,4	51 511 05	Motor protector SMART	1

Pos. No	Part. No	Denomination	Qty/Version
			182
89,5	410 893	Contacteur	1
89,6	410 008	Hex.socket hd screw M4X16-A2-70	2
89,7	410 012	Lock nut	2
89,8	410 008	Hex.socket hd screw M4X16-A2-70	2
89,9	410 012	Lock nut	2
89,17	50 900 62	Single-core cable	1
89,25	410 894	Overload relay	1
89,28	51 076 00	Cable set	1
89	50 993 42	Contacteur unit	1
		Contacteur unit 60Hz 200V - 208V Float switch CSA approved	
		Contacteur unit 60Hz 3- phase 200V - 208V CSA approved Overload supervision	
		Contacteur unit 60Hz 220V - 240V Float switch CSA approved	
		Contacteur unit 60Hz 3- phase 220V - 240V CSA approved Overload supervision	
89,1	50 995 00	Holder	1
89,4	51 511 08	Motor protector SMART	1
89,5	410 815	Contacteur	1
89,6	410 008	Hex.socket hd screw M4X16-A2-70	2
89,7	410 012	Lock nut	2
89,8	410 008	Hex.socket hd screw M4X16-A2-70	2
89,9	410 012	Lock nut	2
89,17	50 900 62	Single-core cable	1
89,25	410 823	Overload relay	1
89,28	51 076 00	Cable set	1
89	50 993 34	Contacteur unit	1
		Contacteur unit 60Hz 3- phase 380V - 400V CSA approved Overload supervision	
		Contacteur unit 60Hz 3- phase 380V - 400V Not CSA approved Overload supervision	
		Contacteur unit 60Hz 3- phase 380V - 400V Float switch Not CSA approved	

Pos. No	Part. No	Denomination	Qty/Version
			182
89,1	50 995 00	Holder	1
89,4	51 511 06	Motor protector SMART	1
89,5	410 814	Contacteur	1
89,6	410 008	Hex.socket hd screw M4X16-A2-70	2
89,7	410 012	Lock nut	2
89,8	410 008	Hex.socket hd screw M4X16-A2-70	2
89,9	410 012	Lock nut	2
89,17	50 900 62	Single-core cable	1
89,25	410 820	Overload relay	1
89,28	51 076 00	Cable set	1
89	50 993 45	Contacteur unit	Contacteur unit 60Hz 3- phase 440V - 480V CSA approved Overload supervision
89,1	50 995 00	Holder	1
89,4	51 511 06	Motor protector SMART	1
89,5	410 814	Contacteur	1
89,6	410 008	Hex.socket hd screw M4X16-A2-70	2
89,7	410 012	Lock nut	2
89,8	410 008	Hex.socket hd screw M4X16-A2-70	2
89,9	410 012	Lock nut	2
89,17	50 900 62	Single-core cable	1
89,17	51 076 00	Cable set	1
89,25	410 819	Overload relay	1
89	50 993 36	Contacteur unit	Contacteur unit 60Hz 3- phase 575V - 600V CSA approved Overload supervision
89,1	50 995 00	Holder	1
89,4	51 511 06	Motor protector SMART	1
89,5	410 893	Contacteur	1
89,6	410 008	Hex.socket hd screw M4X16-A2-70	2
89,7	410 012	Lock nut	2
89,8	410 008	Hex.socket hd screw M4X16-A2-70	2
89,9	410 012	Lock nut	2
89,17	50 900 62	Single-core cable	1
89,25	410 894	Overload relay	1

Pos. No	Part. No	Denomination	Qty/Version
			182
89,28	51 076 00	Cable set	1
89	-	Contactor unit	1
89,1	50 995 00	Holder	1
89,4	51 511 05	Motor protector SMART	1
89,5	410 814	Contactor	1
89,6	410 008	Hex.socket hd screw M4X16-A2-70	2
89,7	410 012	Lock nut	2
89,8	410 008	Hex.socket hd screw M4X16-A2-70	2
89,9	410 012	Lock nut	2
89,17	50 900 62	Single-core cable	1
89,22	410 034	Closed-end splice 3-6(AWG 12-10) L=18	1
89,25	410 819	Overload relay	1
89,28	51 076 00	Cable set	1
89,29	51 779 00	Supervision relay	1
89,30	50 457 00	Cable tie	1
89	51 318 02	Softstarter COMPLETE UNIT	1
		Softstarter 50Hz 3-phase 400V - 400V Float switch Not CSA approved Overload supervision	
		Softstarter 50Hz 3-phase 400V - 400V Not CSA approved Overload supervision	
89	51 747 00	Contactor unit	1
		Contactor unit 50Hz 3- phase 380V - 400V Y/D Float switch Not CSA approved Overload supervision	
		Contactor unit 50Hz 3- phase 380V - 400V Y/D Not CSA approved Overload supervision	
89,1	51 743 00	Holder	1
89,4	51 511 05	Motor protector SMART	1
89,5	410 907	Contactor	2
89,7	410 012	Lock nut	2
89,8	410 008	Hex.socket hd screw M4X16-A2-70	6
89,9	410 012	Lock nut	6
89,18	50 509 00	Cable set	1
89,25	410 945	Overload relay	1
89,28	51 744 00	Cable set	1

Pos. No	Part. No	Denomination	Qty/Version
			182
89,29	410 898	Interlock unit	1
89,30	410 899	Holder	1
89,31	50 148 02	Time relay	1
89	51 747 02	Contactor unit	1
		Contactor unit 60Hz 3-phase 460V - 480V Y/D Not CSA approved Overload supervision	
89,1	51 743 00	Holder	1
89,4	51 511 06	Motor protector SMART	1
89,5	410 908	Contactor	2
89,6	410 008	Hex.socket hd screw M4X16-A2-70	2
89,7	410 012	Lock nut	2
89,8	410 008	Hex.socket hd screw M4X16-A2-70	6
89,9	410 012	Lock nut	6
89,18	50 509 00	Cable set	1
89,25	410 945	Overload relay	1
89,28	51 744 00	Cable set	1
89,29	410 898	Interlock unit	1
89,30	410 899	Holder	1
89,31	50 148 02	Time relay	1
89	50 975 01	Con.term.board unit	1
		Terminal board 50Hz 3-phase 380V - 400V Y/D Not CSA approved	
		Terminal board 60Hz 3-phase 440V - 480V Y/D Not CSA approved	
90	51 672 01	Connection plate	1
91	50 861 00	Main cover	1
92	50 900 63	Single-core cable	1
		Contactor unit	
92	50 900 69	Single-core cable	1
		Contactor unit	
92	50 900 68	Single-core cable	1
		Softstarter	
92	50 900 53	Single-core cable	1
		Softstarter	
93	51 639 01	Cable set	1
94	51 642 00	Terminal plate unit	1
		3-phase	
94	51 758 00	El.lead through unit	1
		3-phase 380V - 400V Y/D	
		3-phase 440V - 480V Y/D	
		3-phase 460V - 480V Y/D	
100	51 748 00	Sticker SOFTSTARTER PH.SEQ. GUARD	1
103	105 839	Cable tie 98X2.5 MM	1

Pos. No	Part. No	Denomination	Qty/Version
			182
104	410 034	Closed-end splice 3-6(AWG 12-10) L=18	1
105	132 354	Insulating hose D=20 MM	*
106	410 872	Flat pin sleeve	2
107	50 040 05	Insulating sleeve 0.5-6 MM2	2
111	410 077	Cable clamp STAINLESS STEEL, CR	1
112	51 726 06	Level regulator unit EU	1
		Contactor unit 50Hz 220V - 240V Float switch Not CSA approved	
		Contactor unit 50Hz 415V - 440V Float switch with isolated input Not CSA approved	
		Contactor unit 50Hz 500V Float switch with isolated input Not CSA approved	
		Contactor unit 50Hz 3-phase 525V - 550V Float switch with isolated input Not CSA approved Overload supervision	
112,2	410 872	Flat pin sleeve	1
112,3	50 040 05	Insulating sleeve 0.5-6 MM2	1
112,4	50 221 01	End sleeve 1.5 MM2; L=7 MM	1
112,6	410 873	Cable lug UL/CSA 0.5-1.65 MM2	1
112,7	410 034	Closed-end splice 3-6(AWG 12-10) L=18	1
112,8	410 774	Level switch	1
112,9	410 370	Plain washer	2
112,10	51 278 00	Bending protection	1
112,11	410 367	Gland screw	1

Pos. No	Part. No	Denomination	Qty/Version
			182
112	51 726 08	Level regulator unit EU Softstarter 50Hz 3-phase 400V - 400V Float switch Not CSA approved Overload supervision Contactor unit 50Hz 380V - 400V Float switch Not CSA approved Contactor unit 50Hz 3- phase 380V - 400V Y/D Float switch Not CSA approved Overload supervision Contactor unit 60Hz 3- phase 380V - 400V Float switch Not CSA approved	1
112,1	410 872	Flat pin sleeve	1
112,2	50 040 05	Insulating sleeve 0.5-6 MM2	1
112,3	50 221 01	End sleeve 1.5 MM2; L=7 MM	1
112,5	410 873	Cable lug UL/CSA 0.5-1.65 MM2	1
112,6	410 034	Closed-end splice 3-6(AWG 12-10) L=18	1
112,7	410 370	Plain washer	2
112,8	50 176 00	Level switch	1
112,9	51 278 00	Bending protection	1
112,10	410 367	Gland screw	1
112	51 726 07	Level regulator unit US/CDN Contactor unit 60Hz 200V - 208V Float switch CSA approved Contactor unit 60Hz 575V Float switch with isolated input CSA approved Contactor unit 60Hz 220V - 240V Float switch CSA approved Contactor unit 60Hz 440V - 480V Float switch with isolated input CSA approved Contactor unit 60Hz 380V - 400V Float switch with isolated input CSA approved	1
112,2	410 872	Flat pin sleeve	1
112,3	50 040 05	Insulating sleeve 0.5-6 MM2	1
112,4	50 221 01	End sleeve 1.5 MM2; L=7 MM	1

Pos. No	Part. No	Denomination	Qty/Version
			182
112,6	410 873	Cable lug UL/CSA 0.5-1.65 MM2	1
112,7	410 034	Closed-end splice 3-6(AWG 12-10) L=18	1
112,9	410 868	Level switch	1
112,10	410 370	Plain washer	2
112,11	51 278 00	Bending protection	1
112,12	410 367	Gland screw	1
112,13	50 892 14	Connection plate	1
113	51 749 00	Bracket	1
113	51 735 01	Sticker	2
113	51 735 00	Sticker	1
114	410 010	Hex.socket hd screw M8X12-A2-70	1
114	51 735 01	Sticker	2
115	50 021 37	Hexagon nut M8-A4-70	1
116	410 872	Flat pin sleeve	1
117	50 040 05	Insulating sleeve 0.5-6 MM2	1
118	50 086 00	Faston connector	1
120	410 197	Hexagon head screw M12X35-A2-70	2
121	132 334	Plain washer (30)-32 MM	4
		Power cable x 1 SUBCAB 4G4 16 - 17mm Max 750V Screened 6x2,5+2x1,5 18,10 - 19,90mm Max 1000V SUBCAB 4G6 18 - 19mm Max 750V SUBCAB 12AWG/4 17 - 18mm Max 600V Screened 3x2,5 13,50 - 14,90mm Max 1000V SUBCAB S3x2,5+3x2,5/3+S(4x0,5) 18 - 20mm Max 1000V SUBCAB 4G2,5+2x1,5 17 - 18mm Max 750V SUBCAB 10AWG/4 18 - 19,70mm Max 600V SUBCAB 4G2,5 12,50 - 13,50mm Max 750V	

Pos. No	Part. No	Denomination	Qty/Version
			182
121	132 336	Plain washer (32)-34 MM	4
		SUBCAB 8AWG/3-2-1-GC 27,20 - 29,20mm Max 600V	
		SUBCAB 4G4+2x1,5 20 - 22mm Max 750V	
		SUBCAB 6AWG/3-2-1-GC 30 - 32mm Max 600V	
		SUBCAB 7G2,5+2x1,5 20 - 22mm Max 750V	
		SUBCAB 4G10+S(2x0,5) 24 - 26mm Max 1000V	
		SUBCAB 12AWG/7 20 - 22mm Max 600V	
		SUBCAB 8AWG/4 24 - 26mm Max 600V	
		SUBCAB 10AWG/3-2-1-GC 20,30 - 22,30mm Max 600V	
		SUBCAB 4G6+2x1,5 24 - 26mm Max 750V	
121	132 312	Plain washer (33)-35 MM	4
		SUBCAB 4AWG/3-2-1-GC 32,80 - 34,80mm L= 16m Max 600V	
122	410 086	O-ring 49.5X3 NBR	1
123	50 020 04	Hex.socket hd screw M6X20-A4-70	2
123	50 020 04	Hex.socket hd screw M6X20-A4-70	4
124	410 153	Seal sleeve (12)-14 MM	2
		Screened 3x2,5 13,50 - 14,90mm Max 1000V	
		SUBCAB 4G2,5 12,50 - 13,50mm Max 750V	
124	410 113	Seal sleeve (17)-20 MM	2
		Screened 6x2,5+2x1,5 18,10 - 19,90mm Max 1000V	
		SUBCAB 4G6 18 - 19mm Max 750V	
		SUBCAB 12AWG/4 17 - 18mm Max 600V	
		SUBCAB S3x2,5+3x2,5/3+S(4x0,5) 18 - 20mm Max 1000V	
		SUBCAB 4G2,5+2x1,5 17 - 18mm Max 750V	
		SUBCAB 10AWG/4 18 - 19,70mm Max 600V	

Pos. No	Part. No	Denomination	Qty/Version	
			182	
124	410 114	Seal sleeve (20)-23 MM	SUBCAB 4G4+2x1,5 20 - 22mm Max 750V SUBCAB 7G2,5+2x1,5 20 - 22mm Max 750V SUBCAB 12AWG/7 20 - 22mm Max 600V SUBCAB 10AWG/3-2-1-GC 20,30 - 22,30mm Max 600V	2
124	410 112	Seal sleeve (14)-17 MM	SUBCAB 4G4 16 - 17mm Max 750V	2
124	410 115	Seal sleeve (23)-26 MM	SUBCAB 4G10+S(2x0,5) 24 - 26mm Max 1000V SUBCAB 8AWG/4 24 - 26mm Max 600V SUBCAB 4G6+2x1,5 24 - 26mm Max 750V	2
124	410 116	Seal sleeve (26)-29 MM	SUBCAB 8AWG/3-2-1-GC 27,20 - 29,20mm Max 600V	2
124	410 117	Seal sleeve (29)-32 MM	SUBCAB 6AWG/3-2-1-GC 30 - 32mm Max 600V	2
124	410 118	Seal sleeve (32)-35 MM	SUBCAB 4AWG/3-2-1-GC 32,80 - 34,80mm Max 600V	2
125	131 039	Motor cable subcab	SUBCAB 4G2,5 12,50 - 13,50mm L= 20m Max 750V	*
125	50 777 00	Motor cable subcab	SUBCAB 4G2,5+2x1,5 17 - 18mm L= 20m Max 750V	*
125	410 063	Motor cable subcab	SUBCAB 7G2,5+2x1,5 20 - 22mm L= 20m Max 750V	*
125	133 139	Motor cable subcab	SUBCAB 4G4 16 - 17mm L= 20m Max 750V	*
125	410 129	Motor cable subcab	SUBCAB 4G4+2x1,5 20 - 22mm L= 20m Max 750V	*
125	131 028	Motor cable subcab	SUBCAB 4G6 18 - 19mm L= 20m Max 750V	*
125	410 126	Motor cable subcab	SUBCAB 4G6+2x1,5 24 - 26mm L= 20m Max 750V	*
125	410 852	Motor cable subcab	SUBCAB 4G10+S(2x0,5) 24 - 26mm L= 20m Max 1000V	*
125	410 067	Motor cable subcab	SUBCAB 12AWG/4 17 - 18mm L= 16m Max 600V	*
125	410 068	Motor cable subcab	SUBCAB 12AWG/7 20 - 22mm L= 16m Max 600V	*

Pos. No	Part. No	Denomination	Qty/Version	
			182	
125	410 132	Motor cable subcab	SUBCAB 10AWG/4 18 - 19,70mm L= 16m Max 600V	*
125	410 069	Motor cable	SUBCAB 10AWG/3-2-1-GC 20,30 - 22,30mm L= 16m Max 600V	*
125	410 133	Motor cable subcab	SUBCAB 8AWG/4 24 - 26mm L= 16m Max 600V	*
125	410 134	Motor cable	SUBCAB 8AWG/3-2-1-GC 27,20 - 29,20mm L= 16m Max 600V	*
125	410 135	Motor cable	SUBCAB 6AWG/3-2-1-GC 30 - 32mm L= 16m Max 600V	*
125	410 136	Motor cable	SUBCAB 4AWG/3-2-1-GC 32,80 - 34,80mm L= 16m Max 600V	*
125	410 059	Motor cable	Screened 3x2,5 13,50 - 14,90mm L= 20m Max 1000V	*
125	410 060	Motor cable	Screened 6x2,5+2x1,5 18,10 - 19,90mm L= 20m Max 1000V	*
125	410 860	Motor cable subcab	SUBCAB S3x2,5+3x2,5/3+S(4x0,5) 18 - 20mm L= 20m Max 1000V	*
126	51 025 02	Sleeve		1
127	50 902 00	Earthing plate		1
127	50 902 00	Earthing plate		2
128	51 033 04	Entrance flange		1
129	410 875	Cap 6X16 PVC	SUBCAB 4G10+S(2x0,5) 24 - 26mm Max 1000V	1
129	410 874	Cap 5X10 MM PVC	SUBCAB S3x2,5+3x2,5/3+S(4x0,5) 18 - 20mm Max 1000V	1
130	410 878	Cap 24X45 MM PVC	SUBCAB 4G10+S(2x0,5) 24 - 26mm Max 1000V	1
130	410 629	Cap 18X25 MM PVC	SUBCAB S3x2,5+3x2,5/3+S(4x0,5) 18 - 20mm Max 1000V	1
131	50 221 00	End sleeve 0.75 MM ² ; L=6 MM		2
132	410 881	Closed-end splice 0.33-0.82(AWG 22-18) L=18		2
133	410 873	Cable lug UL/CSA 0.5-1.65 MM ²		1

Pos. No	Part. No	Denomination	Qty/Version
			182
134	410 917	Shrink hose ID=12 MM	*
135	410 918	Shrink hose ID=3.2 MM	*
137	410 034	Closed-end splice 3-6(AWG 12-10) L=18	2
138	410 054	Shrink hose ID=6.4 MM	*
139	410 994	Shrink hose	*
140	410 011	Hexagon nut M12-A4-70	4
141	132 274	Plain washer 12-A2-170	4
142	132 274	Plain washer 12-A2-170	2
143	50 897 00	U-ring	1
144	50 944 00	Discharge connection	DN 75 Hose 3" aluminium
144	50 944 01	Discharge connection	DN 75 Thread : ISO G3A Outer aluminium DN 75 Thread : ISO G3A Outer Quick coupling: Storz aluminium
144	50 944 03	Discharge connection	DN 75 Thread : Victaulic groove Outer aluminium
144	50 944 02	Discharge connection	DN 75 Thread : NPT 3-8 Outer aluminium
144	50 919 00	Discharge connection	DN 100 Hose 4" aluminium
144	50 919 01	Discharge connection	DN 100 Thread : ISO G4A Outer Quick coupling: Storz diam=115 mm aluminium DN 100 Thread : ISO G4A Outer Quick coupling: Storz aluminium DN 100 Thread : ISO G4A Outer aluminium
144	50 919 03	Discharge connection	DN 100 Thread : Victaulic groove Outer aluminium
144	50 919 02	Discharge connection	DN 100 Thread : NPT 4-8 Outer aluminium
144	51 038 05	Discharge connection	DN 150 Hose 6" aluminium
144	51 038 06	Discharge connection	DN 150 Thread : ISO G6A Outer aluminium DN 150 Thread : ISO G6A Outer Quick coupling: Storz aluminium
144	51 038 09	Discharge connection	DN 150 Thread : Victaulic groove Outer aluminium
144	51 038 08	Discharge connection	DN 150 Thread : NPT 6-8 Outer aluminium
146	410 028	Coupling part	Discharge Connection DN 75 Thread : ISO G3A Outer Quick coupling: Storz aluminium

Pos. No	Part. No	Denomination	Qty/Version	
			182	
146	410 030	Coupling part	Discharge Connection DN 100 Thread : ISO G4A Outer Quick coupling: Storz aluminium	1
146	410 029	Coupling part	Discharge Connection DN 100 Thread : ISO G4A Outer Quick coupling: Storz diam=115 mm aluminium	1
146	410 099	Coupling part	Discharge Connection DN 150 Thread : ISO G6A Outer Quick coupling: Storz aluminium	1
147	410 872	Flat pin sleeve		2
150	50 086 00	Faston connector		1
151	410 872	Flat pin sleeve		1
152	50 040 05	Insulating sleeve 0.5-6 MM2		1
153	133 139	Motor cable subcab	Starter (Phase shifter) 3- phase 50/60 Hz 220V - 575V Current range: 0 - 22A Plug combined with short cable: SUBCAB 4G4 Starter (Phase shifter) 3- phase 50 Hz 380V - 415V Current range: 0 - 22A Plug combined with short cable: SUBCAB 4G4 Supply connection: CEE 5-PLUG 32A	*
153	410 067	Motor cable subcab	Starter (Phase shifter) 3- phase 50/60 Hz 220V - 575V Current range: 0 - 22A Plug combined with short cable: SUBCAB 12AWG/4	*
153	131 028	Motor cable subcab	Starter (Phase shifter) 3- phase 50/60 Hz 220V - 575V Current range: 0 - 48A Plug combined with short cable: SUBCAB 4G6	*
153	410 133	Motor cable subcab	Starter (Phase shifter) 3- phase 50/60 Hz 220V - 575V Current range: 0 - 48A Plug combined with short cable: SUBCAB 8AWG/4	*

Pos. No	Part. No	Denomination	Qty/Version
			182
154	50 100 01	Plug contact	1
		3-phase 50 Hz 380V - 415V Current range: 0 - 32A Plug combined with short cable: No cable Supply connection: CEE 5-PLUG 32A Starter (Phase shifter) 3- phase 50 Hz 380V - 415V Current range: 0 - 22A Plug combined with short cable: SUBCAB 4G4 Supply connection: CEE 5-PLUG 32A	
154	410 685	Plug contact	1
		3-phase 50 Hz 380V - 415V Current range: 0 - 32A Plug combined with short cable: No cable Supply connection: CEE 4-PLUG 32A	
155	50 102 01	Phase shifter	1
155	50 102 02	Phase shifter	1
		Current range: 0 - 48A	
800	51 775 00	O-ring kit	1
		NBR	
801	51 080 00	Zinc anode kit	1
900	51 778 00	Basic repair kit	1
		NBR PLUGIN 25MM RSIC/ RSIC;WCCR/A1203	
900,1	410 100	Ball bearing 30X72X30.2 MM	1
900,2	50 287 04	Ball bearing 20X52X15 MM	1
900,3	410 107	Pressure equalizer L=650 MM	1
900,4	51 755 51	Mechanical seal	1
900,5	51 775 00	O-ring kit	1
900,6	51 829 00	Sticker	1



Grindex
Gesällvägen 33
174 07 Sundbyberg
Sweden
Tel: +46-8-606 66 00
Fax: +46-8-745 53 28
www.grindex.com

Visit our Web site for the latest version of this document
and more information

The original instruction is in English. All non-English
instructions are translations of the original instruction.

© 2012 Grindex