



MANAGE Information

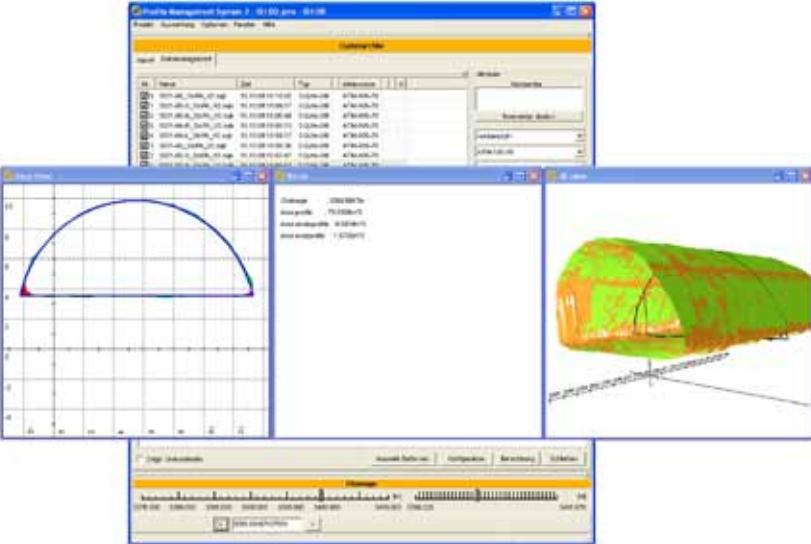
The Profile Management System visualizes and analyzes all measured data arising from conventional tunnelling. With its flexible program structure, different types of data can be processed. This includes production data from the Roadheader and Rockbolter navigation systems as well as measurements from Total Stations and Laser Scanners.

Profile Management System

Analysis of the production data of the SLS Roadheader navigation system

Files in different formats can be collected in a file archive and structured clearly using attributes and comments. Based on individually adapted analysis scripts, these data can be shown together with the alignment and profile band. The numerical and graphical representation of lower and upper pro-

files in the profile cross-section or 3D view is only one of the analysis possibilities. It is also possible to compare the measurements obtained with a Total Station or Laser Scanner with the set profile or with the production data from the navigation system and have the differences displayed.



The profile excavated can be shown using the production data of the SLS Roadheader navigation system. The hull calculated in the SLS Roadheader navigation system from all touch points of the excavation tool is used as the basis.

Profile Management System

The analysis scripts used themselves consist of various modules, which enable new scripts to be produced simply and with no great programming effort, and also enable them to be adapted to special customer requirements.

Advantages

- Quick and exact information of production values, so adjustments could be initiated in time
- Identification of mal-operation
- Better machine operation in poor visibility

Depending on the files available in the file archive, various analyses can be carried out.

Using the production data from the SLS Bolter navigation system, the rock anchors set and their set positions can be displayed together with the set profile.

Features

- Field of applications: positioning systems for Roadheader and Rockbolter
- Visualization and analysis of all measurement and production values
- Customized reports and displays
- 3D-view of tunnel profile, cross-sections, rock anchors positions and much more
- Quick comparison of production- and measurement values (variance analysis)

Measurements from Total Stations or laser scanners on the excavated profile or on the shotcrete can also be displayed with the Profile Management System.

Analyzing the Rockbolter production data

