



Security System and Secure Registration for Plant & Machinery

Identification of stolen Plant has now been made easier with CESAR

“Stop Equipment Theft *NOW*”



**“A CESAR registered machine is 4 times less likely to be stolen*
A CESAR registered machine is 6 times more likely to be recovered if stolen**”**

*compared with statistics produced by IMIA **source PANIU

Promoted by



**Call 03 450 700 440
www.cesarscheme.org**

Powered by





The Official Construction and Agricultural Equipment Security and Registration Scheme

What are you waiting for? Your equipment to be stolen!

CESAR – The Right Track

- A CESAR registered machine is **4** times less likely to be stolen*
- A CESAR registered machine is **6** times more likely to be recovered if stolen**
- Over 200,000 machines are now registered and protected with the CESAR Scheme.
- Visible and covert markings - a real deterrent.
- No annual fees - invest just once in marking and registering your equipment for life.
- Potential for lower insurance premiums up to 20% and reduced excesses - CESAR is approved by all major insurers.
- Quick police access to the CESAR database - providing an instant trace on stolen equipment via Datatag's 24/7 secure call centre.
- Recognition by local and national government agencies - easier to get your equipment authorised to work on major construction sites.
- No recovery fees for stolen vehicles and plant.
- The market leading anti theft system.
- The first industry-wide official scheme - backed by the Plant Theft Action Group.
- CESAR is supported by the Home Office and the National Police Chiefs' Council (NPCC formerly ACPO).



CESAR it or lose it!

**compared with statistics produced by IMIA **source PANIU*

Promoted by

CEA
Construction Equipment Association
coneq.org.uk

AEA
aaa.uk.com

Powered by

DATATAG
datatag.co.uk



CESAR - The Official Scheme

Construction and Agricultural Plant & Machinery Security

Plant and Agricultural theft is an estimated 4.5 Billion Euro headache for the construction & agricultural industry and its insurers.*

For the first time the industry has united behind one official construction and agricultural equipment security and registration scheme. The scheme is CESAR, the premier initiative against equipment theft.

To combat theft and aid recovery CESAR combines:

- State of the art Datatag ID technology
- Overt and covert deterrents
- A low one off cost to protect your machine for life
- A secure and accredited 24/7 database

The triangular CESAR registration plate has become the industry standard with support from local authorities, leading contractors, the farming community, hire companies, the police, insurers and finance companies.

The Construction Equipment Association (CEA) and the Agricultural Engineers Association (AEA) fully support the scheme along with other stakeholders including:

- Leading equipment manufacturers, importers and dealers
- The Home Office
- The police
- Plant hire companies
- Trade associations
- Major insurers



The chosen delivery partner for the official CESAR Scheme is Datatag ID Ltd.

*approximate figures**

Promoted by

CEA
Construction Equipment Association
coneq.org.uk

AEA
aea.uk.com

Powered by

DATATAG
datatag.co.uk

Datatag Technology



Unique Tamper-Evident
Identification Label



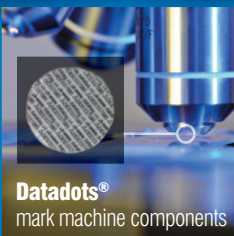
Transponder
Glass tag



Transponder
Self-adhesive



Re-registration Label



Datadots®
mark machine components



Datatag DNA

Call 03 450 700 440
www.cesarscheme.org

“CESAR STOPS THEFT”

CEA - Who We Are

The Construction Equipment Association (CEA) is the Trade Association that represents the UK Construction Equipment sector. Our members are established Original Equipment Manufacturers (OEMs), component and accessory suppliers, the trade press and specialist research companies. Company size varies from major multinationals to micro businesses.

The CEA is the trade association for construction equipment manufacturers, component and accessory suppliers and service providers. For further information see: www.coneq.org.uk - cea@admin.co.uk - Tel 020 8253 4502.

AEA - Who We Are

The Agricultural Engineers Association (AEA) was established in 1875 to promote the technical, trade and commercial interests of British manufacturers and suppliers of agricultural machinery.

Since then it has championed the cause of manufacturers of agricultural machinery and more recently outdoor power equipment. Today its members cover a broad spectrum of manufacturers of land based equipment from combine harvesters to secateurs and everything in between. For further information see: www.aea.uk.com - ceo@aea.uk.com - Tel 0845 6448748.

Datatag – Who We Are

Datatag was developed as a powerful theft deterrent to aid retrieval of stolen property. Datatag has achieved this by implementation of “State of the Art” identification technology that has been specifically designed to be virtually impossible to remove or deface, thereby aiding rapid identification and return to rightful keeper. Datatag technology is probably some of the most sophisticated security marking systems available, developed to combat crime and defeat criminals.

Since its introduction in 1992, Datatag has drastically reduced the rates of stolen property including Motorcycles, Scooters, Plant & Machinery, Cycles and Personal Watercraft etc. Furthermore, the UK Crown Prosecution Service has a 100% successful prosecution record when Datatag has been used as evidence in court. It is endorsed by many Insurers, authorities, organisations and governing bodies and Datatag has developed a unique secure database and has received the highest standard of accreditation in database security. Critically, Datatag provides a service to the Police and its customers, 24 hours a day, 7 days a week.

Datatag Technology

The Datatag scanners are the final ingredient in Datatag’s powerful arsenal against theft. These hi-tech scanners are individually programmed to read the Datatag transponders only (otherwise known as ‘tags’) and play a key role in property identification. As a strategic move, Datatag has invested heavily in this area, arming UK Police Forces with literally thousands of scanners providing them with the ultimate tool to combat thieves.

Promoted by



Powered by



Leading OEM's manufacturers support



Installation by : Import Centre
Models Fitted : All
Fitted Since : September 2007



Installation by : Import Centre
Models Fitted : All
Fitted Since : June 2008



Installation by : Import Centre
Models Fitted : All
Fitted Since : January 2010



Installation by : Import Centre
Models Fitted : U17 and KX080-3 only
Fitted Since : September 2010



Installation by : Factory
Models Fitted : All
Fitted Since : June 2012



Installation by : Import Centre
Models Fitted : All
Fitted Since : January 2013



Installation by : Factory
Models Fitted : ATV
Fitted Since : January 2015



Installation by : Factory
Models Fitted : All Construction except Horticultural & Agri
Fitted Since : November 2007



Installation by : Import Centre
Models Fitted : All
Fitted Since : September 2008



Installation by : FINNING
Models Fitted : All
Fitted Since : March 2010



Installation by : Factory
Models Fitted : All
Fitted Since : January 2011



Installation by : Factory
Models Fitted : All T6 & T7 Tractors
Fitted Since : August 2012



Installation by : Factory
Models Fitted : Telehandlers only
Fitted Since : March 2013



Installation by : Factory
Models Fitted : ATV
Fitted Since : January 2016



Installation by : Factory
Models Fitted : All Dumpers
Fitted Since : February 2008



Installation by : Import Centre
Models Fitted : All Articulated Machines
Fitted Since : January 2009



Installation by : Factory
Models Fitted : All Agricultural except Horticultural
Fitted Since : March 2010



Installation by : Import Centre
Models Fitted : All
Fitted Since : January 2011



Installation by : Factory
Models Fitted : All
Fitted Since : September 2012



Installation by : Factory
Models Fitted : Pantera & Groundcare
Fitted Since : June 2013



Installation by : Factory
Models Fitted : All
Fitted Since : January 2016



Installation by : Import Centre
Models Fitted : All
Fitted Since : April 2008



Installation by : Import Centre
Models Fitted : All
Fitted Since : January 2010



Installation by : Factory
Models Fitted : A5, 6, 7 and 8 Series Tractors
Fitted Since : April 2010



Installation by : Import Centre
Models Fitted : All
Fitted Since : January 2012



Installation by : Factory
Models Fitted : All
Fitted Since : January 2013



Installation by : UK Distributor
Models Fitted : All
Fitted Since : February 2014

OEM's providing CESAR as an option

BOMAG



Doosan Infracore
 Portable Power



TEREX

VOLVO



WACKER
 NEUSON

Mortimer Vibroll