

# 永州翊翔机电设备有限公司

YONG ZHOU YI XIANG MACHINERY & EQUIPMENT LTD.



[www.crane-china.com](http://www.crane-china.com)

yi-xiang

翊翔机电

# QAY130 全地面起重机

## 底盘转向系统图示 Chassis Steering System Diagram

### QAY300



中桥提升  
Mid-axle lifted

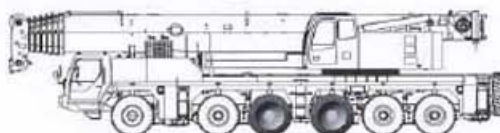


前后桥反向转向：小半径转弯  
Front and rear axles reverse steering: Small radius turning  
24m

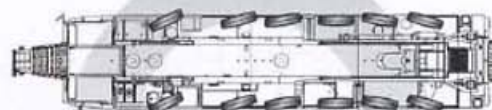


前后桥同向转向：蟹行行走  
Front and rear axles synchronous steering: Crabbing walk

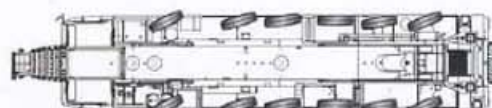
### QAY240



中桥提升  
Mid-axle lifted

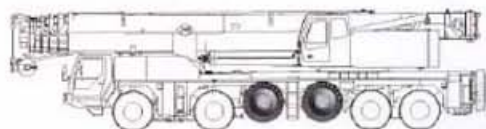


前后桥反向转向：小半径转弯  
Front and rear axles reverse steering: Small radius turning  
24m



前后桥同向转向：蟹行行走  
Front and rear axles synchronous steering: Crabbing walk

### QAY200,160



中桥提升  
Mid-axle lifted

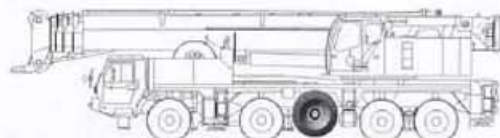


前后桥反向转向：小半径转弯  
Front and rear axles reverse steering: Small radius turning  
24m



前后桥同向转向：蟹行行走  
Front and rear axles synchronous steering: Crabbing walk

### QAY130



中桥提升  
Mid-axle lifted



前后桥反向转向：小半径转弯  
Front and rear axles reverse steering: Small radius turning  
18m



前后桥同向转向：蟹行行走  
Front and rear axles synchronous steering: Crabbing walk



# QAY130 全地面起重机



40%

QAY300



48%

QAY240



48%

QAY200、160



45%

QAY130



# QAY130 全地面起重机

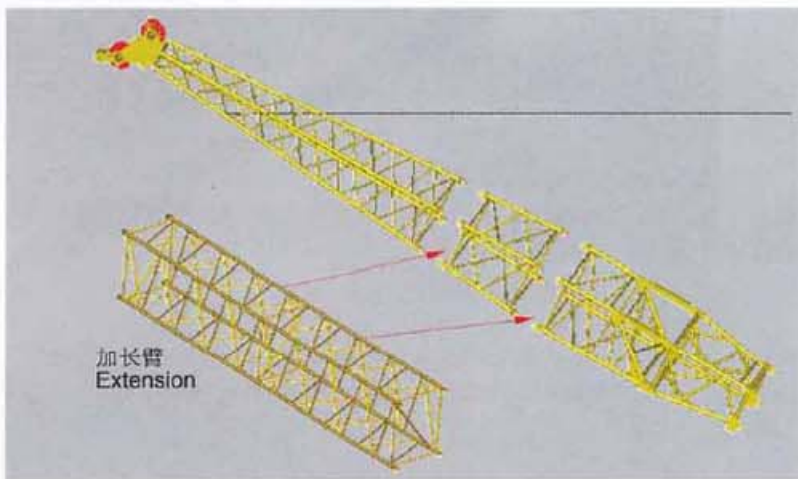
300吨可选配超起装置和可变幅副臂、副臂臂长可组合  
 SSL and luffing jib are available for 300t crane、Jib length can be combined



超起装置和固定加长（变幅）副臂安装结构  
 SSL and fixed extension (luffing) jib installation

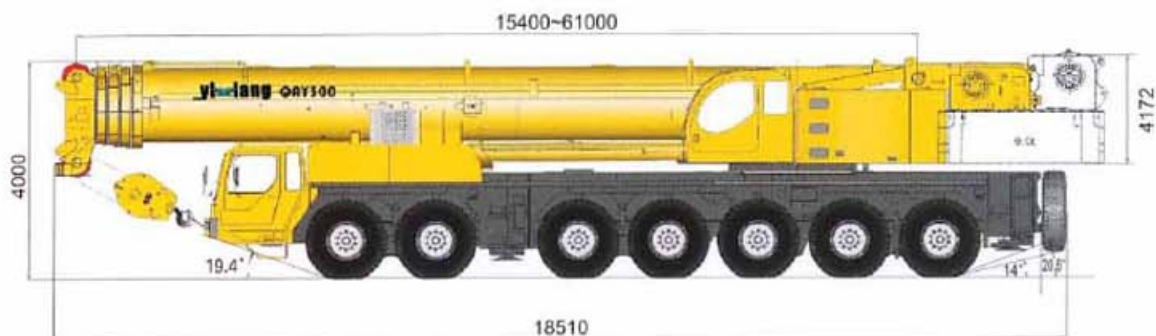


55吨自重行驶状态  
 Crane travel with 55t dead weight



副臂可组合  
 Combined jib length

## 整机外形尺寸图 Outline Dimensions



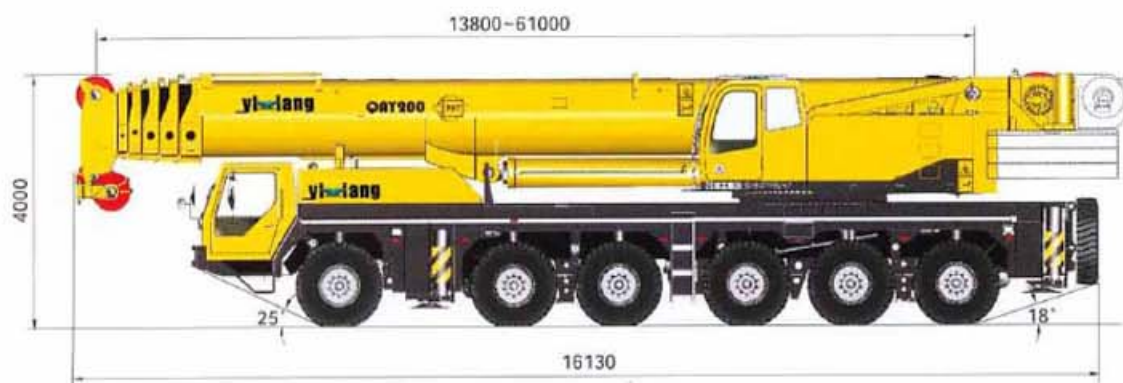
**QAY300**



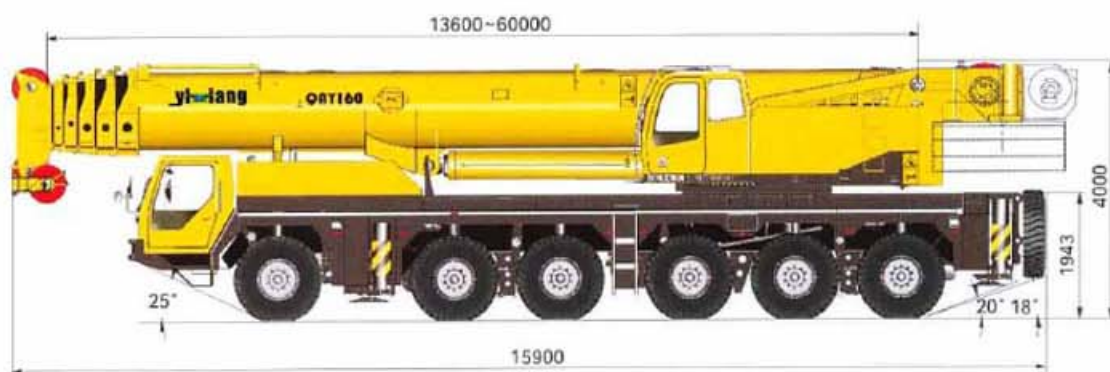
**QAY240**

# QAY130 全地面起重机

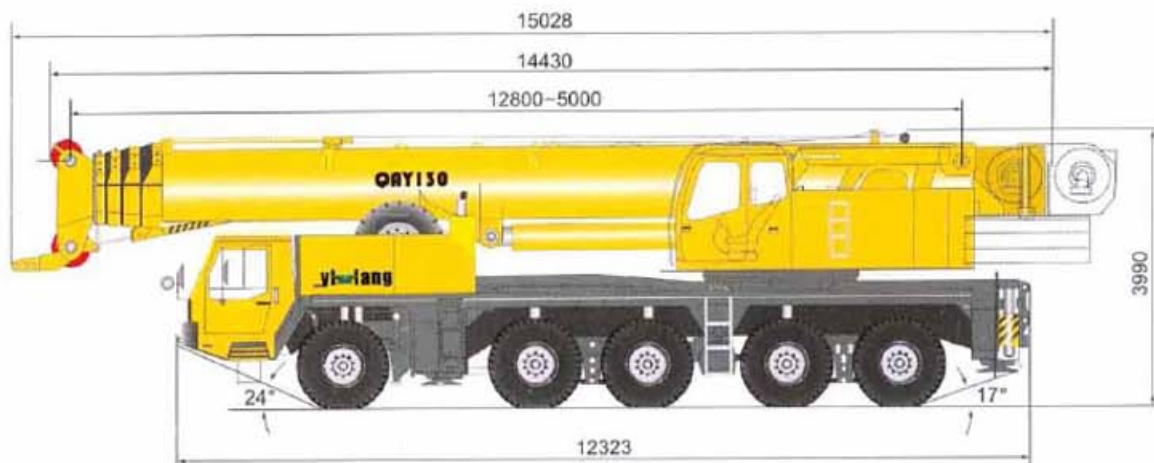
## 整机外形尺寸图 Outline Dimensions



**QAY200**



**QAY160**



**QAY130**



# QAY130 全地面起重机



## 起重机行驶状态主要技术参数表 Main Technical Data in Travel State

类别 Category	项目 Item		单位 Unit	QAY300
尺寸参数 Outline Dimensions	整机全长 Overall length		mm	18510
	整机全宽 Overall width		mm	3000
	整机全高 Overall height		mm	4000
重量参数 Weight	行驶状态整机自重 Dead weight in travel state		kg	79650
	轴荷 Axle load	一、二轴 1st,2nd axle	kg	10000
		三、四轴 3rd,4th axle	kg	11000
		五、六轴 5th,6th axle	kg	12000
动力参数 Power	上车发动机 Superstructure engine	额定功率 Engine rated output	kw/(r/min)	194/2100
		额定扭矩 Engine rated torque	N.m/(r/min)	1050/1400
		额定转速 Max.travel speed	r/min	2100
	下车发动机 Carrier engine	额定功率 Engine rated output	kw/(r/min)	420/1800
		额定扭矩 Engine rated torque	N.m/(r/min)	2700/1080
		额定转速 Max.travel speed	r/min	2000
行驶参数 Travel Performance	最高行驶速度 Max.travel speed		km/h	75
	最小转弯直径 Min.turning diameter		m	24
	最小离地间隙 Min.ground clearance		mm	330
	接近角 Approach angle		"	19.4
	离去角 Departure angle		"	20.6(14)
	制动距离(车速为30km/h) Braking distance(at 30km/h)		m	<10
	最大爬坡度 Max.grade ability		%	40
百公里油耗 Fuel consumption of 100km		l	96	

## 起重机作业状态主要技术参数表 Main Technical Data For Lifting Operation

类别 Category	项目 Item		单位 Unit	QAY300	
主要性能参数 Lifting performance	最大额定总起重量 Max.total rated lifting capacity		t	300	
	最小额定工作幅度 Min.rated working radius		m	3	
	转台尾部回转半径(平衡重) Turning radius at swing table tail		mm	5640	
	最大起重力矩 Max.load	基本臂 Base boom	kN.m	9526	
		最长主臂 Full-extend boom	kN.m	4675	
	支腿距离 Outrigger span	纵向/横向 Longitudinal distance/Lateral distance		m	9.2/8.7(6.5)
		起升高度 Lifting height	基本臂 Base boom	m	16.5
	最长主臂 Full-extend boom		m	60.8	
	最长主臂 + 副臂 Full-extend boom+Jib (20m副臂)		m	79.2 (15m副臂)	
	起重臂长度 Boom length	基本臂 Base boom	m	15.4	
最长主臂 Full-extend boom		m	61		
最长主臂 + 副臂 Full-extend boom+Jib (20m副臂)		m	76 (15m副臂)		
工作速度参数 Working speed	起重臂变幅 Boom elevating	起臂 Boom raising	s	90	
	起重臂伸缩 Boom telescoping	全伸/全缩 Full-extending/Full-Retracting	s	480/480	
	最大回转速度 Max.swing speed		r/min	1.7	
	支腿伸缩时间 Outrigger extending and retracting time	水平支腿 Outrigger beam	同时伸 Full-extending	s	50
			同时缩 Retracting	s	40
		垂直支腿 Outrigger jack	同时伸 Full-extending	s	50
			同时缩 Retracting	s	45
起升速度(单绳、第四层) Hoisting speed(single rope,4th layer)	主起升机构 Main winch	空载 No load	m/min	150	
	副起升机构 Aux.winch	空载 No load	m/min	150	





# QAY130 全地面起重机



QAY240	QAY200	QAY160	QAY130
15918	16130	15900	15028
3080	3000	3000	3000
4000	4000	4000	3950
72000	71000	70000	57000
12000	11750	11500	11000
12000	11850	11700	11000
12000	11900	11800	11000
194/2100	162/2100	162/2100	324/1800
1050/1400	854/1400	854/1400	2100/1200
2100	2100	2100	1800
420/1800	390/1800	390/1800	324/1800
2700/1080	2400/1200	2400/1200	2100/1200
2000	2000	2000	1800
71	71	71	76
24	24	24	24/18
278	278	278	300
25	25	25	24
18	20/18	20/18	17
≤ 10	≤ 10	≤ 10	≤ 10
48	48	48	45
90	80	80	70

QAY240	QAY200	QAY160	QAY130
240	200	160	130
3	3	3	3
4800	5070	4850	3958
7797(132.6 × 6)	6774	5282	4120(4m × 105t)
2940(10 × 30)	2752	2140	1420(12m × 12.1t)
9.625/8.7(6.5)	9.625/8.7(6.5)	9.625/8.7(6.5)	8.0/7.5
12.6	14.5	14.3	12.2
65.6	61.5	56.3	50
85.7	82.1	79	70
13.2	13.8	13.6	12.8
67	61	60	50
87	81	80	70
65	90	90	60
650	550/550	550/550	360/340
1.6	1.9	2	2
50	50	50	30
40	40	40	25
50	50	50	40
45	45	45	35
115	120	120	100
118	110	110	100

yi xiang

www.crane-china.com 翱翔机电

yi xiang 永州翱翔机电设备有限公司  
YONG ZHOU YI XIANG MACHINERY & EQUIPMENT LTD.

地址:湖南省长沙市五一大道韭菜园路389号华美欧大厦2013-2014室  
ADD: ROOM 2013-2014, HUAMEIOU BUILDING, NO. 389,  
WUYI AVE, CHANGSHA, HUNAN, CHINA  
邮址(E-mail): info@crane-china.com  
总机(TEL): 86-731-85816117 82880555/666/777  
传真(FAX): 86-731-85816217 82880111

电话(TEL): 86-746-8422780 8323288  
传真(FAX): 86-746-8420289  
地址:湖南省永州市冷水滩区湘永路129号中亚家园2104室  
ADD: ROOM 2104, ZHONGYA JIAYUAN, NO. 129 XIANGYONG RD,  
LENG SHUI TAN DISTRICT, YONGZHOU, HUNAN, CHINA