

MCT range

POTAIN 

“ Just imagine...
...*simple* and
quick crane erection ”



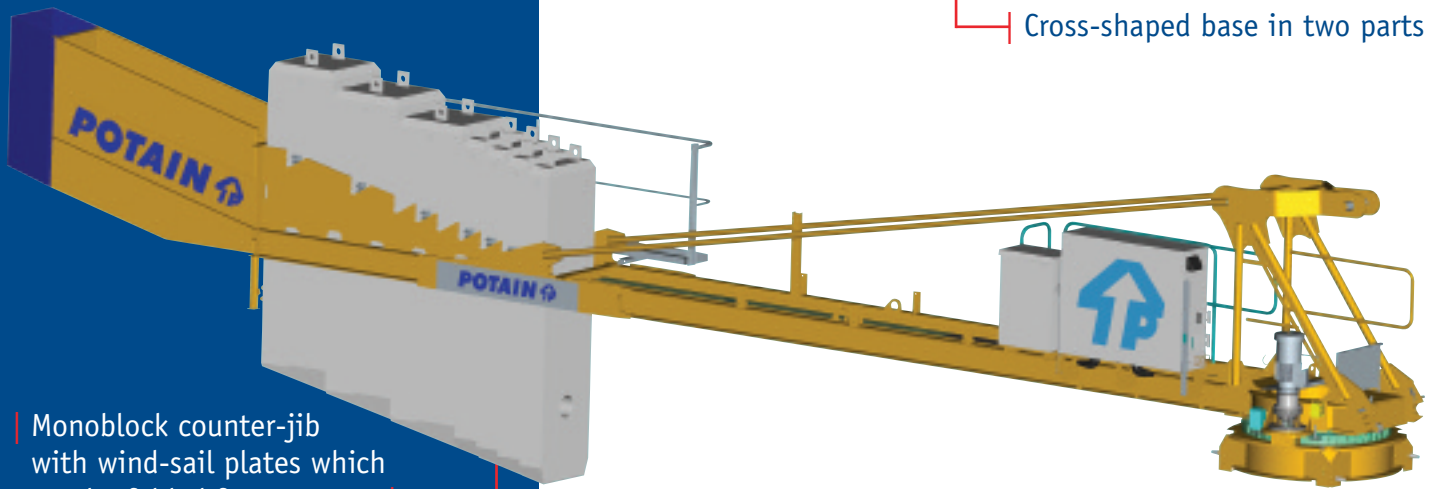
- ...multiple devices for a faster erection
- ...mechanism with frequency inverter for better efficiency as standard
- ...Radio control with integrated indicator as standard

MCT range



3.8 m : ZC 2030
4.5 m : ZD 2030

Cross-shaped base in two parts



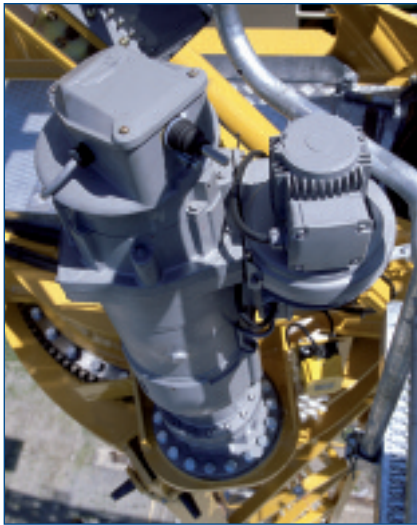
Monoblock counter-jib with wind-sail plates which can be folded for transport

Faster erection of the jib: two notches on the lower members and one pin on the upper member!



The "City" design: rope-reeving is carried out on the ground

High performance mechanisms



RVF Optima+

Variable frequency slewing, continuously variable speed control by means of a stepless controller, that also adapts to the crane operator's driving style.

Two possible options for stopping motion:

1. Deceleration controlled by the frequency converter,
2. Deceleration controlled by counter-slewing command,

Also incorporates automated internal slewing ring lubrication and electric weathervaning.

LVF Optima+

Variable frequency hoisting :

- permanent adaptation and optimization of speed depending on the lifted load,
- very low slow speeds, smooth speed changes,
- high productivity.



DVF

Trolleying with variable frequency, progressive speed by means of stepless control.



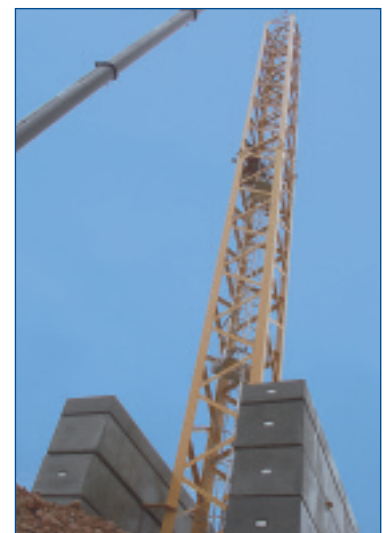
Standard components

The masts adopt the standard bases from the MC range, allowing it to be adjusted to the desired height.

The adjustable bases are of the same type as those of the MC crane range, providing a choice of method of installation:

- on fixing angles,
- on cross-shaped base,
- on travelling gear,
- or as a climbing crane.

For easier management of your crane fleet, the standard elements taken from the MC range are assembled using pinned fish joints for ease and speed of connection.



Options

MCT cranes are available with a wide range of optional features:

- Vision cab with or without air-conditioning
- Dialog VISU indicators
- Dialog Wind anemometer
- Top Tracing interference control and zone limitation system
- Remote control unit with indicator
- Automatic cartridge lubrication
- Auxiliary winch



Radio control with indicator

The MCT range

- 5 models.
- Jib lengths from 40 m to 52 m.
- Maximum load from 2.5 to 5 tons.
- Maximum hoisting speeds from 2.8 to 82 m/min.

| | | | | m | | | | | | | |
|--------|-----|------|-----|------|------|------|------|------|------|------|------|
| | m | m | t | 40 | 41 | 42 | 45 | 46 | 50 | 51 | 52 |
| MCT 50 | 2.8 | 26.9 | 2.5 | | | | | | | | |
| | 3.8 | 35.8 | | 1.15 | 1.10 | | | | | | |
| | 4.5 | 38.8 | | | | | | | | | |
| MCT 58 | 2.8 | 28.4 | 3 | | | | | | | | |
| | 3.8 | 35.8 | | 1.25 | | 1.20 | | | | | |
| | 4.5 | 38.8 | | | | | | | | | |
| MCT 68 | 2.8 | 28.5 | 3 | | | | | | | | |
| | 3.8 | 37.4 | | 1.3 | | | 1.15 | 1.10 | | | |
| | 4.5 | 38.9 | | | | | | | | | |
| MCT 78 | 3.8 | 36.8 | 5 | 1.75 | | | 1.50 | | | 1.00 | |
| | 3.8 | 38.4 | | 1.80 | | | 1.55 | | 1.10 | 1.05 | |
| | 4.5 | 38.3 | 3 | | | | | | | | |
| MCT 88 | 3.8 | 36.8 | 5 | 1.90 | | | 1.65 | | 1.40 | | 1.10 |
| | 3.8 | 39.4 | | 1.95 | | | 1.70 | | 1.45 | | 1.25 |
| | 4.5 | 38.3 | 3 | | | | | | | | |

Manitowoc Crane Group - Americas - World Headquarters
 2400 S. 44th Street • Manitowoc • WI 54220 USA
 Tel: +1 920 684 4410 • Fax: +1 920 652 9778

Manitowoc Crane Group - Europe, Middle East & Africa
 Manitowoc Crane Group France SAS
 18, rue de Charbonnières • B.P. 173 • 69132 ECULLY Cedex • FRANCE
 Tel: +33 (0)4 72 18 20 20 • Fax: +33 (0)4 72 18 20 00

Manitowoc Crane Group- Asia Pacific
 4 Kwong Min Road • SINGAPORE 628707 • SINGAPORE
 Tel: +65 6264 1188 • Fax: +65 6862 4040

www.manitowoccranegroup.com - www.potain.com



www.manitowoccranegroup.com