

# >B< Oyster

A range of Termination fittings.

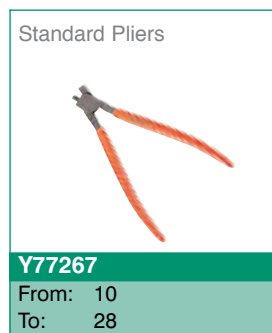
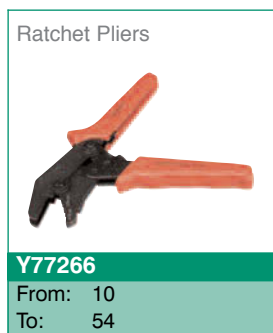


## Features and Benefits:

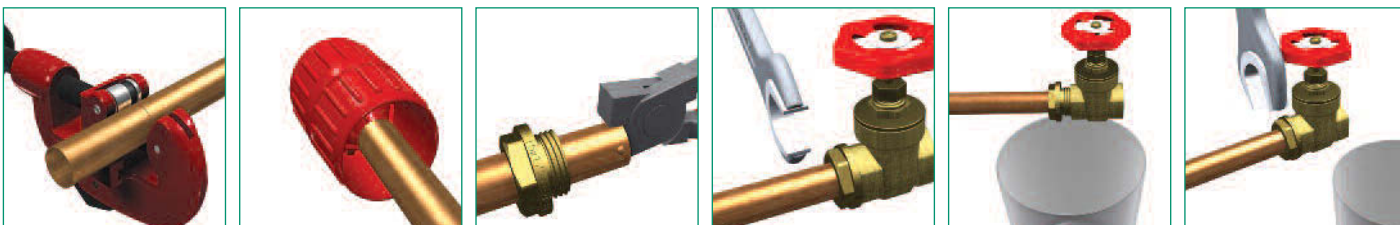
- Oyster bodies are available in yellow brass, red brass and stainless steel.
- Seal is achieved via two EPDM O-Rings, one internal to seal on the tube, the other to make the fitting seal
- Designed with a male parallel thread allowing it to be connected to BSP, ISO 7 and ISO 228 of female threaded fittings without the need for any additional sealant, such as PTFE tape.
- Can be used on drinking water and other hot and cold water systems, including central heating.
- Fittings are compatible with EN 1057 copper, soft, half-hard, hard and stainless tube.
- WRAS approval and are manufactured in accordance with accredited EN ISO 9002 Quality Management Procedures.
- The only tools you require are the special Oyster pliers and a standard open ended or adjustable spanner.
- Suitable for burst pipe connection and expansion couplings.
- Flame Free installation.
- PTFE tape is not required for installation.



## Oyster Range



## Installation Procedure



### Tools required:

Cutting tool, deburring tool and flat-faced spanner, Oyster pliers.

### Assembly

- Cut the tube end square, and ensure it retains its shape.
- Deburr the tube, both inside and outside.
- Slide the oyster converter onto the tube, taking care not to damage the 'o' ring. The fitting must have the thread facing the component to be terminated.

- Using the pliers, dimple the tube with the projections facing outwards. The recommended number is:

Up to 16mm	3 dimples
18-42mm	4 dimples
54mm	6 dimples

- Slide the fitting up to the dimples, which will retain it on the tube.
- Screw the thread of the fitting into the component until hand tight.
- Using a flat-faced spanner, tighten until metal to metal contact then a further 1/4 turn.

### Demounting

- Turn off the water supply.
- Place a suitable receptacle under the joint to be dismantled.
- With suitable flat-faced spanners, undo the joint.
- Slide the oyster converter back from the component.
- Pull the tube from the fitting socket, ensuring any excess water is collected in the receptacle.



\*Conex|Bänninger products are approved by numerous Standards Authorities and Certification Bodies. For more details on this product range, please email our technical team at: [technical@ibpgroup.com](mailto:technical@ibpgroup.com).

**Conex Universal Limited:** Global House, 95 Vantage Point, The Pensnett Estate, Kingswinford, West Midlands DY6 7FT, UNITED KINGDOM.  
 Tel: +44 (0)121 557 2831 | Fax: +44 (0)121 520 8778 | Email: [salesuk@ibpgroup.co.uk](mailto:salesuk@ibpgroup.co.uk) | Website: [www.ibpgroup.com](http://www.ibpgroup.com)