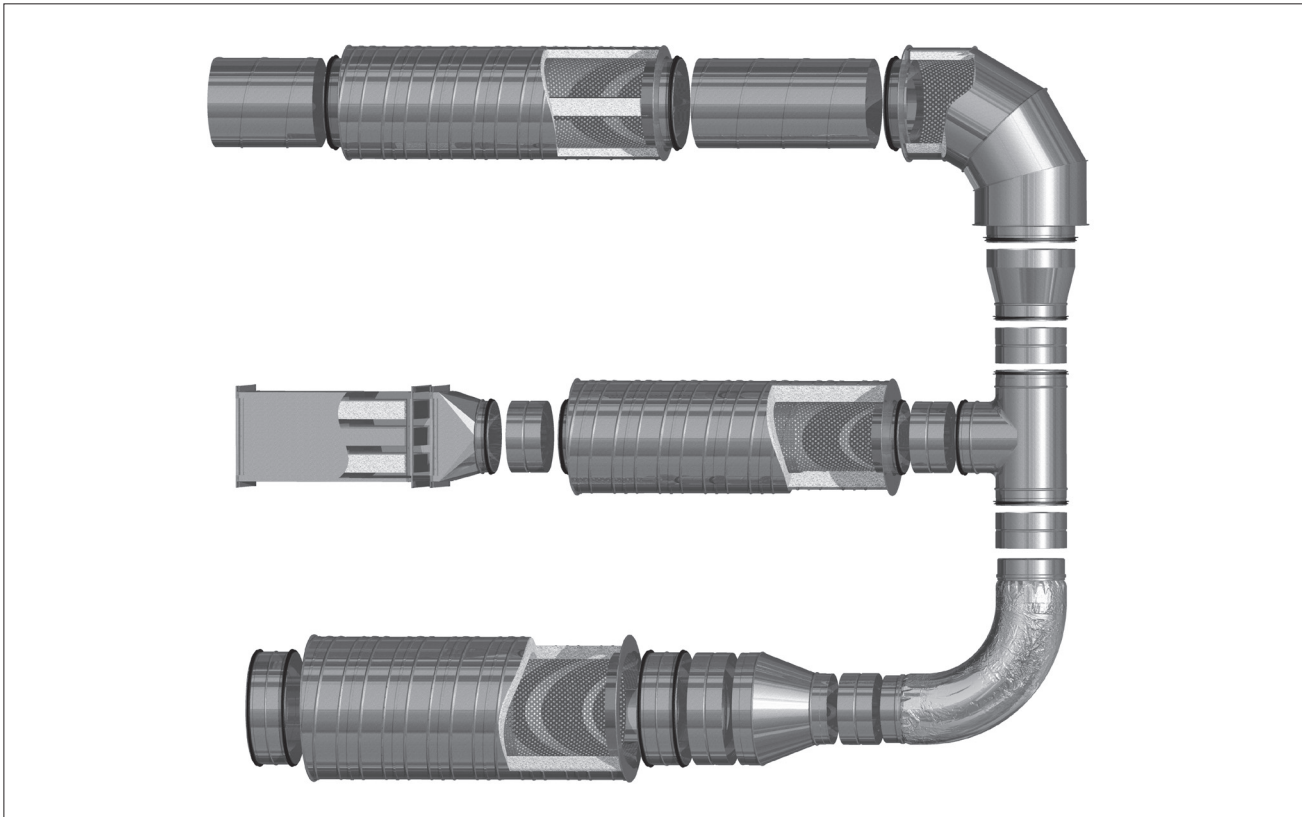


Silencers

We reserve the right to make changes in the dimensions and technical data products due to their continuous improvement



About the System

Together with ducts and fittings, silencers form a complete ventilation system. Considering how wide this product range is, they can be used practically in all conditions.

Dimensions

All the circular silencers have diameters matching round SPIRAL® system fittings. As for the dimensions of the rectangular silencers, each time they are adapted to the size of ducts and fittings. The remaining sizes are based on the tables and information provided in a product's catalogue datasheet

Installation Instructions

The circular silencers are fitted using self-tapping screws or blind rivets in the part of the duct into which the connection flange is slid. All items with a diameter greater than 315mm are supplied with female ends, and two additional male ends have to be ordered to join them with ducts. The rectangular silencers are installed using screws near steel corners and a KLQ clamp that fastens flange mounting frames together.

Benefits of Use

Silencers are used to reduce noise in ventilation ductwork, coming from fans, central stations and individual rooms. With their nice appearance and consistency with other ventilation system components, the silencers can also be installed in prominent places.

Labelling

ALNOR products are furnished with the construction industry's B sign and product codes according to their technical specifications contained in this catalogue.



SPIRAL® system silencers made of galvanised sheet metal have the hygiene certificate: HK/B/0867/01/2009.

The rectangular silencers have the hygiene certificates:
a) HK/B/0100/02/2009 for those made of galvanised sheet metal
b) HK/B/0101/01/2009 for those made of acid-proof sheet metal

Material Specifications

Ducts and fittings are made of galvanised steel.

Other materials are available upon request:

Stainless steel 1.4301 / 304
 Stainless steel with molybdenum 1.4404 / 316L
 Aluminum AW-1050A H24
 Copper M1E z4
 Aluzinc acc. to En 10143.2000

Specify the material code when ordering.

If no code is provided, standard galvanised steel quality will be supplied.

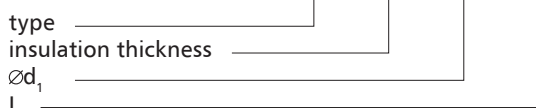
Example identification:

SIL-K-... - 1.4301 / 304
 SIL-K-.....-316L - 1.4404 / 316L
 SIL-A-.... - AW-1050A H24

For components made of stainless steel maintenance inspections should be made at least once every six months.

Example identification

Product code: **SIL - iii - aaa - bbb**

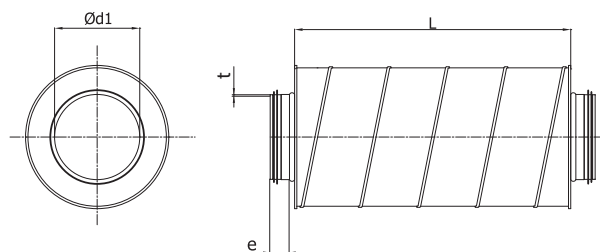


Tolerance for silencers

The SPIRAL® system is based on the duct tolerances specified below.

Ød ₁ nom [mm]	e [mm]	tolerance [mm]	
Ø80-315	36	+0	-6
Ø355-400	55	+0	-6
Ø450-630	75	+0	-10
Ø710-900	100	+0	-10
Ø1000-1250	115	+0	-20

Tolerance for silencers



diameter Ød ₁ _{nom} [mm]	min. - max. diameter Ød ₁ _{nommin} - Ød ₁ _{nommax} [mm]	thickness t _{nom} [mm]
80	78,8 - 79,3	0,5
100	98,8 - 99,3	0,5
112	110,5 - 111,3	0,5
125	123,8 - 124,3	0,5
140	138,7 - 139,3	0,5
150	148,7 - 149,3	0,5
160	158,7 - 159,3	0,5
180	178,6 - 179,3	0,5
200	198,6 - 199,3	0,5
224	222,5 - 223,3	0,5
250	248,5 - 249,3	0,5
280	278,4 - 279,3	0,5
300	298,4 - 299,3	0,5
315	313,4 - 314,3	0,5
355	353,3 - 354,3	0,5
400	398,3 - 399,3	0,5
450	448,2 - 449,3	0,5
500	498,2 - 499,3	0,5
560	558,1 - 559,3	0,6
600	598,2 - 599,3	0,6
630	628,1 - 629,3	0,6
710	708,0 - 709,3	0,7
800	798,0 - 799,3	0,7
900	897,9 - 899,3	0,7
1000	997,9 - 999,3	0,9
1120	1117,8 - 1119,3	0,9
1250	1247,8 - 1249,3	0,9

Tolerances for ventilation silencers stainless steel, copper, aluminum

[Download Wentyle](#)
[Download AlnorCAM](#)
[Buy via B2B](#)

Elements made of 1.4301 / 304

diameter $\varnothing d_{nom}$ [mm]	thickness t_{nom} [mm]	diameter $\varnothing d_{nom}$ [mm]	thickness t_{nom} [mm]
80	0,5	80	0,6
100	0,5	100	0,6
112	0,5	112	0,6
125	0,5	125	0,6
140	0,5	140	0,6
150	0,5	150	0,6
160	0,5	160	0,6
180	0,5	180	0,6
200	0,5	200	0,6
224	0,5	224	0,6
250	0,5	250	0,6
280	0,5	280	0,6
300	0,5	300	0,6
315	0,5	315	0,6
355	0,5	355	0,6
400	0,5	400	0,6
450	0,5	450	0,6
500	0,5	500	0,6
560	0,7	560	0,6
600	0,7	600	0,6
630	0,7	630	0,6
710	0,7	710	0,6
800	0,7	800	0,6
900	0,7	900	0,6
1000	0,7	1000	0,8
1250	0,7	1250	0,8

Acid-resistant 1.4301 and 1.4404 class ventilation silencers are used with round or rectangular channels and fittings. Locking lids are always performed segmental and wall thickness elements are dependent on the diameter and material. Even the covers of sheet 1.4404 perforated middle part is always in the type of 1.4301 - made of molybdenum can be measured and defined on special request. Completion of the scenes in the dampers are made conical SIBOL - segmental. Before ordering, check that glass wool or stone, and the veil / non-woven glass is resistant to the elements in the air inside the channels. Type of perforation, used wool and veil it possible to obtain the same value as in the case of damping galvanized typical ventilation silencers.

Elements made of AW-1050A H24

diameter $\varnothing d_{nom}$ [mm]	thickness t_{nom} [mm]	diameter $\varnothing d_{nom}$ [mm]	thickness t_{nom} [mm]
80	0,6	80	0,6
100	0,6	100	0,6
112	0,6	112	0,6
125	0,6	125	0,6
140	0,6	140	0,6
150	0,6	150	0,6
160	0,6	160	0,6
180	0,6	180	0,6
200	0,6	200	0,6
224	0,6	224	0,6
250	0,6	250	0,6
280	0,6	280	0,6
300	0,6	300	0,6
315	0,6	315	0,6
355	0,6	355	0,6
400	0,6	400	0,6
450	0,8	450	0,6
500	0,8	500	0,6
560	0,8		
600	0,8		
630	0,8		
710	0,8		
800	0,8		
900	0,8		

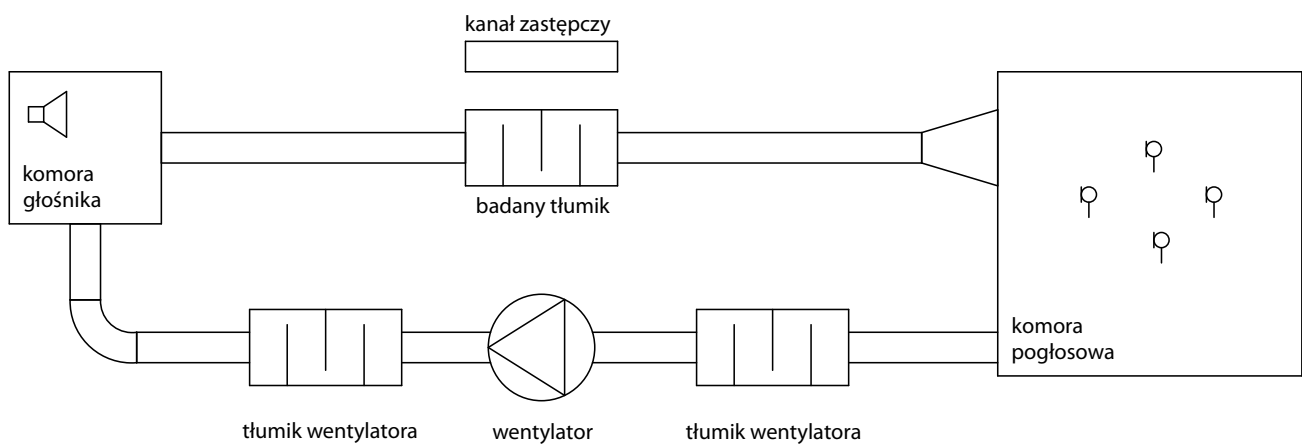
Copper and aluminum pipe silencers form a coherent whole with the spiro pipes and fittings segmented round. Both coats the outer and inner perforation is made of aluminum or copper. Completion of the scenes for SIBOL or SIBROL segment are performed. Through the use of stone wool / glass and veil as galvanized silencers can be used synonymously and also damping properties for aluminum and copper products

Measurement method

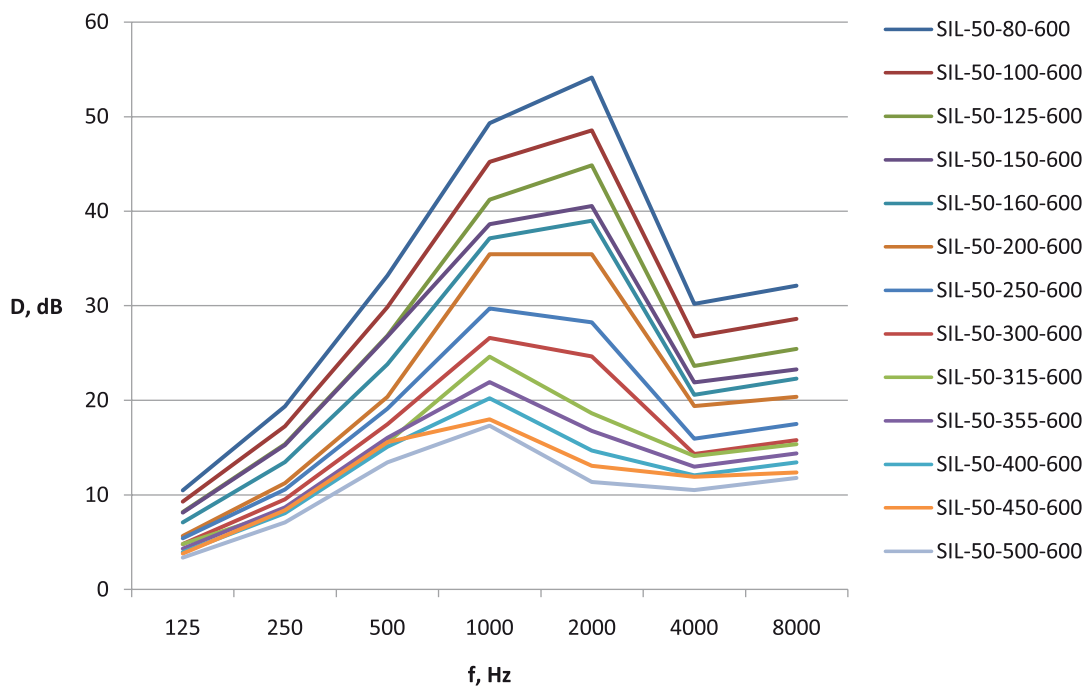
Selected SPIRAL®system acoustic dampers were tested by the Institute of Power Engineering - Research Institute - "ITC" Heat Technology Department in Łódź.

Echo chamber measurement method was used, in accordance with the standard PN-EN ISO 7235:2009 "Acoustics. Laboratory measurement methods for built-in duct silencers and terminal components. Insertion loss, flow noise and total pressure loss", and PN-EN ISO 3741:2010 "Acoustics. Determining acoustic power level for sources of noise based on acoustic pressure measurements. Exact measurement methods in echo chambers."

See below for a measurement template:



The diagram below shows the attenuation of the selected silencers SIL-50 of different diameters and the same length



Circular silencers

SIL/SIBL/SIRL/SIBRL/SIBOL/SIBROL

[Download Wentyle](#)
[Download AlnorCAM](#)
[Buy via B2B](#)

Technical Data

Design

The silencers are made of spirally wound steel pipe as an outer casing and an internal perforated tube. The space between the outer coating and the perforated tube is filled with sound-absorbing mineral wool. The polyester fabric between the perforated tube and the mineral wool prevents wool from penetrating into the duct.

Connection

The silencers are typically supplied with gasket. Diameters $d_1 > 315$ mm require an additional NSL coupling to be ordered.

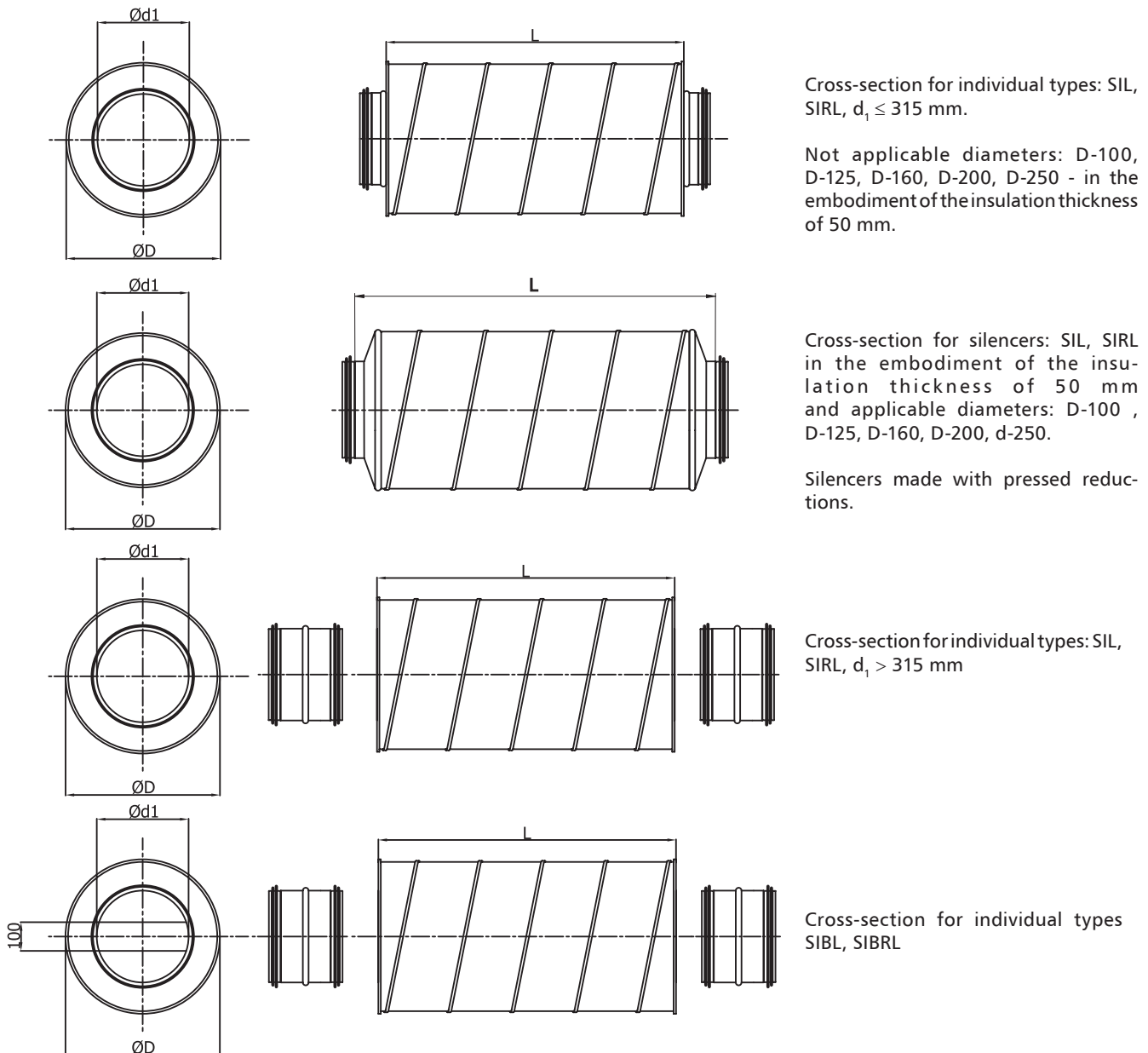
Dimensions

The circular silencers are supplied with connection diameters ranging from 80mm to 800mm and standard lengths 300, 600, 900 and 1500, depending on the connection diameter.

Technical Data

Information on the dimensions, weight, attenuation and pressure drop of individual types is provided in the respective sections.

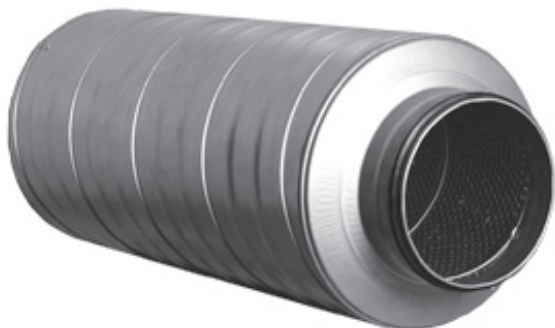
Dimensions



Circular silencers

SIL

[Download Wentyle](#)
[Download AlnorCAM](#)
[Buy via B2B](#)



Description

The silencers are usually supplied with SPIRAL®system sealing. Diameters $d_1 > 315$ mm require additional NSL couplings to be ordered, which should be installed in the silencer prior to installation. These male ends are not silencer parts, and they should be ordered separately.

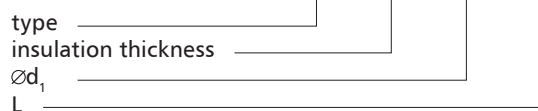
Glass mineral wool inside with thickness:

50 mm dla **SIL-50** - depending on the dimension of the outer casing

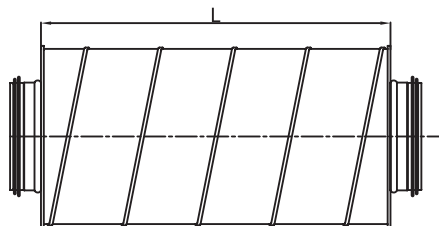
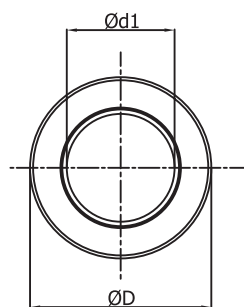
100 mm dla **SIL-100** - depending on the dimension of the outer casing

Example identification

Product code: **SIL - iii - aaa - bbb**

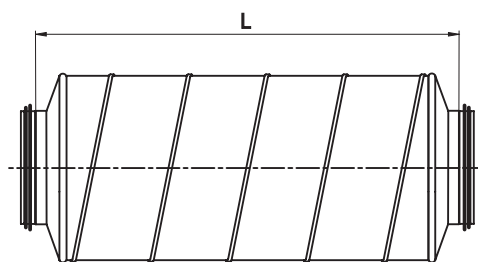
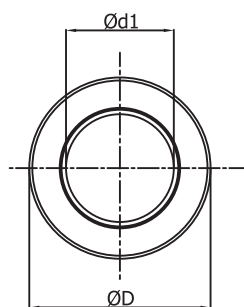


Dimensions



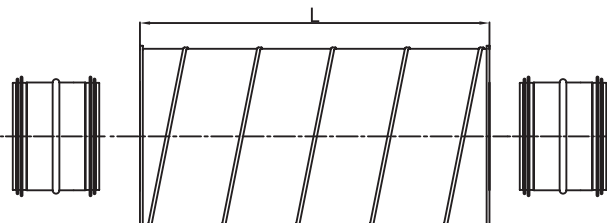
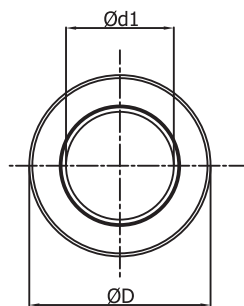
Cross-section for individual types: SIL, SIRC, $d_1 \leq 315$ mm.

Not applicable diameters: D-100, D-125, D-160, D-200, D-250 - in the embodiment of the insulation thickness of 50 mm.



Cross-section for silencers: SIL, SIRC in the embodiment of the insulation thickness of 50 mm and applicable diameters: D-100, D-125, D-160, D-200, d-250.

Silencers made with pressed reductions.



Cross-section for individual types: SIL, SIRC, $d_1 > 315$ mm

Circular silencers

SIL

[Download Wentyle](#)
[Download AlnorCAM](#)
[Buy via B2B](#)

Dimensions

SIL-50 - 50 mm thickness insulation

Description	Ød ₁ nom [mm]	D nom [mm]	L [mm]	attenuation [dB] for frequency [Hz]										[kg]
				125	250	500	1000	2000	4000	8000				
SIL 080-300	80	180	300	6	15	29	45	50	26	28	2			
080-500	80	180	500	9	18	32	48	53	29	31	3			
080-600	80	180	600	11	19	33	49	54	30	32	3			
080-900	80	180	900	13	22	36	52	57	33	35	5			
080-1000	80	180	1000	14	23	37	53	58	34	36	6			
080-1200	80	180	1200								7			
SIL *100-300	100	200	350	5	13	26	41	44	22	24	2			
*100-500	100	200	550	8	16	29	44	47	26	27	3			
*100-600	100	200	650	9	17	30	45	49	27	29	3			
*100-900	100	200	950	12	19	32	48	51	29	31	5			
* 100-1000	100	200	1050	13	21	34	49	52	30	32	6			
* 100-1200	100	200	1250								7			
SIL *125-300	125	224	350	4	11	22	37	41	19	21	3			
*125-500	125	224	550	7	14	26	40	44	22	24	4			
*125-600	125	224	650	8	15	27	41	45	24	25	4			
*125-900	125	224	950	11	18	29	44	47	26	28	7			
* 125-1000	125	224	1050	12	19	31	45	49	27	29	7			
* 125-1200	125	224	1250								9			
SIL 150-300	150	250	300	4	11	23	34	36	18	19	4			
150-500	150	250	500	7	14	26	37	39	21	22	4			
150-600	150	250	600	8	15	27	39	41	22	23	6			
150-900	150	250	900	11	18	29	42	43	25	26	8			
150-1000	150	250	1000	12	19	30	42	44	26	27	8			
150-1200	150	250	1200								10			
SIL *160-300	160	250	350	3	9	20	33	35	16	18	3			
*160-500	160	250	550	6	12	23	36	38	19	21	5			
*160-600	160	250	650	7	14	24	37	39	21	22	6			
*160-900	160	250	950	10	16	26	40	42	23	25	8			
* 160-1000	160	250	1050	11	17	28	41	43	24	26	8			
* 160-1200	160	250	1250								10			
SIL *200-300	200	300	350	2	7	16	31	31	15	16	4			
*200-500	200	300	550	5	10	19	34	34	18	19	6			
*200-600	200	300	650	6	11	20	35	35	19	20	7			
*200-900	200	300	950	8	13	23	38	38	22	23	10			
* 200-1000	200	300	1050	9	15	24	39	39	23	24	11			
* 200-1200	200	300	1250								12			
SIL *250-500	250	355	550	4	9	18	29	27	15	16	9			
*250-600	250	355	650	5	11	19	30	28	16	18	11			
*250-900	250	355	950	8	13	22	33	31	19	20	14			
* 250-1000	250	355	1050	9	14	23	33	32	20	21	12			

SIL-50 - 50 mm thickness insulation

Description	Ød ₁ nom [mm]	D nom [mm]	L [mm]	attenuation [dB] for frequency [Hz]										[kg]
				125	250	500	1000	2000	4000	8000				
* 250-1250	250	355	1200	11	17	25	35	34	21	23	17			
* 250-1550	250	355	1500	12	18	26	37	35	23	24	20			
SIL 300-500	300	400	500	4	8	16	25	23	13	15	13			
300-600	300	400	600	5	10	18	27	25	14	16	15			
300-900	300	400	900	7	12	20	30	27	17	18	16			
300-1000	300	400	1000	8	13	21	30	28	18	19	19			
300-1200	300	400	1200	10	15	23	32	30	20	21	22			
300-1500	300	400	1500	12	17	24	34	32	21	23	25			
SIL 315-500	315	400	500	4	7	14	23	21	13	14	11			
315-600	315	400	600	5	8	16	25	19	14	15	12			
315-900	315	400	900	7	11	18	28	21	17	18	16			
315-1000	315	400	1000	8	12	19	28	22	18	19	16			
315-1200	315	400	1200	10	14	21	30	24	19	21	19			
315-1500	315	400	1500	12	16	23	32	26	21	22	25			
SIL 355-600	355	450	600	4	9	16	22	17	13	14	13			
355-900	355	450	900	7	11	19	25	19	16	17	18			
355-1000	355	450	1000	8	12	20	26	21	17	18	20			
355-1200	355	450	1200	10	15	22	27	22	18	20	22			
355-1500	355	450	1500	11	16	23	29	24	20	21	27			
SIL 400-600	400	500	600	4	8	15	20	15	12	13	15			
400-900	400	500	900	6	10	18	23	17	15	16	20			
400-1000	400	500	1000	8	12	19	24	18	16	17	22			
400-1200	400	500	1200	9	14	21	25	20	17	19	25			
400-1500	400	500	1500	11	15	22	27	22	19	20	31			
SIL 450-600	450	560	600	4	8	16	18	13	12	12	23			
450-900	450	560	900	6	11	18	21	16	15	15	27			
450-1000	450	560	1000	7	12	19	22	17	16	16	29			
450-1200	450	560	1200	9	14	21	23	18	17	17	31			
450-1500	450	560	1500	11	16	23	25	20	19	19	36			
SIL 500-600	500	600	600	3	7	14	17	11	11	12	32			
500-900	500	600	900	6	9	16	20	14	13	14	42			
500-1000	500	600	1000	7	11	17	21	15	14	15	51			
500-1200	500	600	1250	9	13	19	22	17	16	17	59			
500-1500	500	600	1500	10	14	20	24	18	17	19	72			

Circular silencers

SIL

[Download Wentyle](#)
[Download AlnorCAM](#)
[Buy via B2B](#)

SIL-50 - 50 mm thickness insulation

Description	Ød, nom [mm]	D nom [mm]	L [mm]	attenuation [dB] for frequency [Hz]								[kg]
				125	250	500	1000	2000	4000	8000		
SIL 560-900	560	630	900	6	9	15	19	13	12	14	31	
560-1000	560	630	1000	7	10	16	20	14	13	15	34	
560-1200	560	630	1200	9	13	18	21	15	15	16	39	
SIL 630-900	630	710	900	5	8	14	18	11	12	13	34	
630-1000	630	710	1000	6	10	16	18	12	13	14	39	
630-1200	630	710	1200	8	12	17	20	14	14	15	42	

* made with pressed lids

SIL-50 - 50 mm thickness insulation

Description	attenuation [Pa] for air velocity [m/s]				
	2	4	8	10	12
SIL-50-080-300	0,43	1,74	6,95	10,86	15,64
SIL-50-080-500	0,44	1,77	7,07	11,04	15,90
SIL-50-080-600	0,45	1,80	7,18	11,22	16,16
SIL-50-080-900	0,48	1,93	7,72	12,06	17,37
SIL-50-080-1000	0,50	2,01	8,03	12,54	18,06
SIL-50-080-1200					
SIL-50-100-300	0,36	1,42	5,68	8,88	12,79
SIL-50-100-500	0,36	1,44	5,76	9,00	12,96
SIL-50-100-600	0,37	1,47	5,88	9,18	13,22
SIL-50-100-900	0,40	1,61	6,45	10,08	14,52
SIL-50-100-1000	0,42	1,68	6,72	10,50	15,12
SIL-50-100-1200					
SIL-50-125-300	0,29	1,15	4,61	7,20	10,37
SIL-50-125-500	0,29	1,17	4,68	7,32	10,54
SIL-50-125-600	0,30	1,20	4,80	7,50	10,80
SIL-50-125-900	0,34	1,34	5,38	8,40	12,10
SIL-50-125-1000	0,35	1,41	5,64	8,82	12,70
SIL-50-125-1200					
SIL-50-150-300	0,34	1,34	5,38	8,40	12,10
SIL-50-150-500	0,34	1,36	5,45	8,52	12,27
SIL-50-150-600	0,35	1,39	5,57	8,70	12,53
SIL-50-150-900	0,38	1,54	6,14	9,60	13,82
SIL-50-150-1000	0,40	1,61	6,45	10,08	14,52
SIL-50-150-1200					
SIL-50-160-300	0,24	0,96	3,84	6,00	8,64
SIL-50-160-500	0,25	0,99	3,96	6,18	8,90
SIL-50-160-600	0,25	1,02	4,07	6,36	9,16
SIL-50-160-900	0,29	1,15	4,61	7,20	10,37
SIL-50-160-1000	0,31	1,23	4,92	7,68	11,06
SIL-50-160-1200					

SIL-50 - 50 mm thickness insulation

Description	pressure loss [Pa] for air velocity [m/s]				
	2	4	8	10	12
SIL-50-200-300	0,17	0,67	2,69	4,20	6,05
SIL-50-200-500	0,17	0,69	2,76	4,32	6,22
SIL-50-200-600	0,18	0,72	2,88	4,50	6,48
SIL-50-200-900	0,22	0,86	3,46	5,40	7,78
SIL-50-200-1000	0,24	0,94	3,76	5,88	8,47
SIL-50-200-1200					
SIL-50-250-500	0,18	0,74	2,96	4,62	6,65
SIL-50-250-600	0,19	0,77	3,07	4,80	6,91
SIL-50-250-900	0,23	0,91	3,65	5,70	8,21
SIL-50-250-1000	0,25	0,99	3,96	6,18	8,90
SIL-50-250-1200	0,35	1,39	5,57	8,70	12,53
SIL-50-250-1500	0,40	1,58	6,34	9,90	14,26
SIL-50-300-500	0,15	0,59	2,34	3,66	5,27
SIL-50-300-600	0,16	0,62	2,50	3,90	5,62
SIL-50-300-900	1,90	7,58	30,34	47,40	68,26
SIL-50-300-1000	0,21	0,84	3,34	5,22	7,52
SIL-50-300-1200	0,31	1,24	4,95	7,74	11,15
SIL-50-300-1500	0,37	1,50	5,99	9,36	13,48
SIL-50-315-500	0,12	0,50	2,00	3,12	4,49
SIL-50-315-600	0,13	0,53	2,11	3,30	4,75
SIL-50-315-900	0,17	0,67	2,69	4,20	6,05
SIL-50-315-1000	0,19	0,75	3,00	4,68	6,74
SIL-50-315-1200	0,29	1,15	4,61	7,20	10,37
SIL-50-315-1500	0,35	1,39	5,57	8,70	12,53
SIL-50-355-600	0,11	0,43	1,73	2,70	3,89
SIL-50-355-900	0,14	0,57	2,27	3,54	5,10
SIL-50-355-1000	0,16	0,64	2,57	4,02	5,79
SIL-50-355-1200	0,26	1,05	4,19	6,54	9,42
SIL-50-355-1500	0,33	1,33	5,34	8,34	12,01
SIL-50-400-600	0,09	0,37	1,50	2,34	3,37
SIL-50-400-900	0,13	0,52	2,07	3,24	4,67
SIL-50-400-1000	0,15	0,59	2,34	3,66	5,27
SIL-50-400-1200	0,25	1,00	3,99	6,24	8,99
SIL-50-400-1500	0,33	1,31	5,22	8,16	11,75
SIL-50-450-600	0,08	0,34	1,34	2,10	3,02
SIL-50-450-900	1,20	4,80	19,20	30,00	43,20
SIL-50-450-1000	0,14	0,56	2,23	3,48	5,01
SIL-50-450-1200	0,24	0,96	3,84	6,00	8,64
SIL-50-450-1500	0,31	1,25	4,99	7,80	11,23
SIL-50-500-600	0,07	0,29	1,15	1,80	2,59
SIL-50-500-900	0,11	0,43	1,73	2,70	3,89
SIL-50-500-1000	0,12	0,50	2,00	3,12	4,49

Circular silencers

SIL

[Download Wentyle](#)
[Download AlnorCAM](#)
[Buy via B2B](#)

SIL-50 - 50 mm thickness insulation

Description	pressure loss [Pa] for air velocity [m/s]				
	2	4	8	10	12
SIL-50-500-1200	0,23	0,91	3,65	5,70	8,21
SIL-50-500-1500	0,30	1,21	4,84	7,56	10,89
SIL-50-560-900	0,10	0,39	1,57	2,46	3,54
SIL-50-560-1000	0,12	0,47	1,88	2,94	4,23
SIL-50-560-1200	0,22	0,87	3,49	5,46	7,86
SIL-50-630-900	0,09	0,36	1,42	2,22	3,20
SIL-50-630-1000	0,11	0,43	1,73	2,70	3,89
SIL-50-630-1200	0,21	0,84	3,34	5,22	7,52

SIL-100 - 100 mm thickness insulation

Description	Ød, nom [mm]	D nom [mm]	L [mm]	attenuation [dB] for frequency [Hz]								[kg]
				125	250	500	1000	2000	4000	8000		
SIL 100-500	100	300	500	20	29	40	44	52	27	27	6	
100-600	100	300	600	21	30	44	48	53	29	28	7	
100-900	100	300	900	22	34	52	57	57	32	31	9	
100-1000	100	300	1000	22	34	55	60	58	33	33	11	
100-1200	100	300	1200	24	37	58	64	61	34	34	12	
SIL 125-300	125	315	300	17	24	38	42	51	26	28	5	
125-500	125	315	500	18	26	36	42	49	25	25	8	
125-600	125	315	600	18	26	36	42	49	25	25	8	
125-900	125	315	900	20	30	48	55	54	29	30	11	
125-1000	125	315	1000	20	31	51	58	55	31	31	13	
125-1200	125	315	1200	21	34	54	62	58	31	33	13	
SIL 150-300	150	355	300	15	21	33	37	44	23	25	5	
150-500	150	355	500	20	29	40	44	52	27	27	9	
150-600	150	355	600	17	25	36	41	43	23	24	10	
150-900	150	355	900	18	28	44	50	47	26	27	13	
150-1000	150	355	1000	18	28	47	53	48	28	28	15	
150-1200	150	355	1200	24	37	58	64	61	34	34	18	
SIL 160-300	160	355	300	16	21	29	34	41	20	23	7	
160-500	160	355	500	17	23	28	34	39	19	20	9	
160-600	160	355	600	17	24	32	38	40	21	21	10	
160-900	160	355	900	18	27	40	47	44	24	25	14	
160-1000	160	355	1000	19	28	43	50	45	25	26	14	
160-1200	160	355	1200	20	31	46	54	48	26	28	17	
SIL 200-300	200	400	300	13	18	27	29	36	18	21	8	
200-500	200	400	500	14	20	25	28	34	17	18	12	
200-600	200	400	600	14	21	29	33	35	19	19	12	
200-900	200	400	900	15	25	38	42	39	22	22	16	
200-1000	200	400	1000	16	25	41	45	40	23	24	16	
200-1200	200	400	1200	17	28	43	48	43	24	26	20	

SIL-100 - 100 mm thickness insulation

Description	Ød, nom [mm]	D nom [mm]	L [mm]	attenuation [dB] for frequency [Hz]								kg
				125	250	500	1000	2000	4000	8000		
SIL 250-500	250	450	500	11	17	22	26	29	15	16	16	
250-600	250	450	600	12	18	26	30	30	17	17	14	
250-900	250	450	900	13	22	34	39	34	20	20	20	
250-1000	250	450	1000	14	22	37	42	35	21	22	17	
250-1200	250	450	1200	15	25	40	46	38	22	23	24	
250-1500	250	450	1500	16	29	44	51	42	23	26	28	
SIL 315-500	315	500	500	10	16	17	22	25	13	14	14	
315-600	315	500	600	14	17	21	26	26	15	15	16	
315-900	315	500	900	12	20	39	35	30	18	19	21	
315-1000	315	500	1000	12	21	32	38	31	19	20	22	
315-1200	315	500	1200	14	24	35	42	34	22	23	26	
315-1500	315	500	1500	15	28	39	47	38	21	25	35	
SIL 355-600	355	560	600	10	15	20	23	23	13	14	26	
355-900	355	560	900	11	19	28	32	27	16	18	29	
355-1000	355	560	1000	11	19	31	35	28	18	19	33	
355-1200	355	560	1200	13	22	34	39	31	18	21	33	
355-1500	355	560	1500	14	26	38	44	35	19	24	47	
SIL 400-600	400	600	600	9	15	18	21	20	12	11	21	
400-900	400	600	900	11	18	26	30	24	14	14	30	
400-1000	400	600	1000	11	18	29	33	25	16	16	29	
400-1200	400	600	1200	12	22	32	37	28	16	17	41	
400-1500	400	600	1500	14	26	36	42	32	17	20	51	
SIL 450-600	450	630	600	9	14	16	18	17	10	10	32	
450-900	450	630	900	10	17	24	27	21	13	13	40	
450-1000	450	630	1000	10	18	27	30	22	15	15	36	
450-1200	450	630	1200	11	21	30	34	25	15	16	46	
450-1500	450	630	1500	13	25	34	39	29	16	19	56	
SIL 500-600	500	710	600	8	13	14	15	15	10	9	23	
500-900	500	710	900	10	16	22	24	19	13	13	35	
500-1000	500	710	1000	10	17	25	27	20	14	14	39	
500-1200	500	710	1200	11	20	28	31	23	15	16	43	
500-1500	500	710	1500	13	24	32	36	27	16	19	50	
SIL 560-900	560	800	900								39	
560-1000	560	800	1000								53	
560-1200	560	800	1200								56	
560-1500	560	800	1500								46	
SIL 630-900	630	800	900	8	15	20	22	17	11	11	50	
630-1000	630	800	1000	9	15	23	25	18	12	12	48	
630-1200	630	800	1200	10	18	26	29	21	13	14	58	
630-1500	630	800	1500	11	22	29	34	25	14	17	66	
SIL 710-1000	710	900	1000	8	14	20	23	16	11	10	59	
710-1200	710	900	1200	9	17	23	27	18	11	12	64	

SIL-100 - 100 mm thickness insulation

opis	Ød, nom [mm]	D nom [mm]	L [mm]	tłumienie [dB] dla częstotliwości [Hz]								waga [kg]
				125	250	500	1000	2000	4000	8000		
710-1500	710	900	1500	11	21	26	30	22	12	15	73	
SIL 800-1000	800	1000	1000	8	14	20	22	15	10	10	0	
800-1200	800	1000	1200	9	17	22	25	18	11	12	73	
800-1500	800	1000	1500	10	21	26	30	22	12	15	103	
SIL 900-1000	900	1120	1000	7	13	19	20	13	9	10	80	
900-1200	900	1120	1200	8	16	22	24	16	10	11	88	
900-1500	900	1120	1500	10	20	26	29	20	11	14	95	

SIL-100 - 100 mm thickness insulation

opis	pressure loss [Pa] for air velocity [m/s]				
	2	4	8	10	12
SIL-100-100-500	0,26	1,04	4,15	6,48	9,33
SIL-100-100-600	0,28	1,13	4,53	7,08	10,20
SIL-100-100-900	0,34	1,34	5,38	8,40	12,10
SIL-100-100-1000	0,35	1,40	5,61	8,76	12,61
SIL-100-100-1200	0,37	1,50	5,99	9,36	13,48
SIL-100-125-300	0,19	0,77	3,07	4,80	6,91
SIL-100-125-500	0,25	0,99	3,96	6,18	8,90
SIL-100-125-600	0,27	1,08	4,34	6,78	9,76
SIL-100-125-900	0,33	1,31	5,22	8,16	11,75
SIL-100-125-1000	0,34	1,36	5,45	8,52	12,27
SIL-100-125-1200	0,36	1,46	5,84	9,12	13,13
SIL-100-150-300	0,18	0,72	2,88	4,50	6,48
SIL-100-150-500	0,24	0,94	3,76	5,88	8,47
SIL-100-150-600	0,26	1,04	4,15	6,48	9,33
SIL-100-150-900	0,31	1,25	4,99	7,80	11,23
SIL-100-150-1000	0,33	1,31	5,22	8,16	11,75
SIL-100-150-1200	0,35	1,40	5,61	8,76	12,61
SIL-100-160-300	0,17	0,67	2,69	4,20	6,05
SIL-100-160-500	0,23	0,91	3,65	5,70	8,21
SIL-100-160-600	0,25	1,01	4,03	6,30	9,07
SIL-100-160-900	0,31	1,23	4,92	7,68	11,06
SIL-100-160-1000	0,32	1,29	5,15	8,04	11,58
SIL-100-160-1200	0,35	1,38	5,53	8,64	12,44
SIL-100-200-300	0,16	0,64	2,57	4,02	5,79
SIL-100-200-500	0,20	0,82	3,26	5,10	7,34
SIL-100-200-600	0,23	0,91	3,65	5,70	8,21
SIL-100-200-900	0,28	1,12	4,49	7,02	10,11
SIL-100-200-1000	0,30	1,18	4,72	7,38	10,63
SIL-100-200-1200	0,32	1,28	5,11	7,98	11,49
SIL-100-250-500	0,17	0,67	2,69	4,20	6,05
SIL-100-250-600	0,19	0,77	3,07	4,80	6,91

SIL-100 - 100 mm thickness insulation

Description	pressure loss [Pa] for air velocity [m/s]				
	2	4	8	10	12
SIL-100-250-900	0,24	0,98	3,92	6,12	8,81
SIL-100-250-1000	0,26	1,04	4,15	6,48	9,33
SIL-100-250-1200	0,28	1,13	4,53	7,08	10,20
SIL-100-250-1500	0,31	1,25	4,99	7,80	11,23
SIL-100-315-600	0,14	0,57	2,27	3,54	5,10
SIL-100-315-900	0,19	0,78	3,11	4,86	7,00
SIL-100-315-1000	0,21	0,84	3,34	5,22	7,52
SIL-100-315-1200	0,23	0,93	3,72	5,82	8,38
SIL-100-315-1500	0,26	1,05	4,19	6,54	9,42
SIL-100-355-500	0,12	0,47	1,88	2,94	4,23
SIL-100-355-600	0,11	0,44	1,77	2,76	3,97
SIL-100-355-900	0,17	0,66	2,65	4,14	5,96
SIL-100-355-1000	0,18	0,71	2,84	4,44	6,39
SIL-100-355-1200	0,20	0,81	3,23	5,04	7,26
SIL-100-355-1500	0,23	0,93	3,72	5,82	8,38
SIL-100-400-600	0,08	0,32	1,27	1,98	2,85
SIL-100-400-900	0,13	0,53	2,11	3,30	4,75
SIL-100-400-1000	0,15	0,59	2,34	3,66	5,27
SIL-100-400-1200	0,17	0,68	2,73	4,26	6,13
SIL-100-400-1500	0,20	0,80	3,19	4,98	7,17
SIL-100-450-600	0,05	0,19	0,77	1,20	1,73
SIL-100-450-900	0,10	0,40	1,61	2,52	3,63
SIL-100-450-1000	0,12	0,46	1,84	2,88	4,15
SIL-100-450-1200	0,14	0,56	2,23	3,48	5,01
SIL-100-450-1500	0,17	0,67	2,69	4,20	6,05
SIL-100-500-600	0,02	0,08	0,31	0,48	0,69
SIL-100-500-900	0,07	0,29	1,15	1,80	2,59
SIL-100-500-1000	0,09	0,35	1,38	2,16	3,11
SIL-100-500-1200	0,11	0,44	1,77	2,76	3,97
SIL-100-500-1500	0,14	0,56	2,23	3,48	5,01
SIL-100-560-900					
SIL-100-560-1000					
SIL-100-560-1200					
SIL-100-560-1500					
SIL-100-630-900	0,02	0,10	0,38	0,60	0,86
SIL-100-630-1000	0,04	0,14	0,58	0,90	1,30
SIL-100-630-1200	0,06	0,24	0,96	1,50	2,16
SIL-100-630-1500	0,09	0,36	1,46	2,28	3,28
SIL-100-710-1000	0,02	0,08	0,31	0,48	0,69
SIL-100-710-1200	0,04	0,17	0,69	1,08	1,56
SIL-100-710-1500	0,07	0,30	1,19	1,86	2,68
SIL-100-800-1000	0,01	0,04	0,15	0,24	0,35
SIL-100-800-1200	0,03	0,13	0,54	0,84	1,21

SIL-100 - 100 mm thickness insulation

Description	pressure loss [Pa] for air velocity [m/s]				
	2	4	8	10	12
SIL-100-800-1500	0,06	0,25	1,00	1,56	2,25
SIL-100-900-1000	0,00	0,01	0,04	0,06	0,09
SIL-100-900-1200	0,03	0,11	0,42	0,66	0,95
SIL-100-900-1500	0,06	0,23	0,92	1,44	2,07

Circular silencers

SIBL

[Download Wentyle](#)
[Download AlnorCAM](#)
[Buy via B2B](#)



Description

The silencers are usually supplied with SPIRAL®system sealing. Diameters $d_1 > 315$ mm require additional NSL couplings to be ordered, which should be installed in the silencer prior to installation. These male ends are not silencer parts, and they should be ordered separately.

Glass mineral wool inside with thickness:

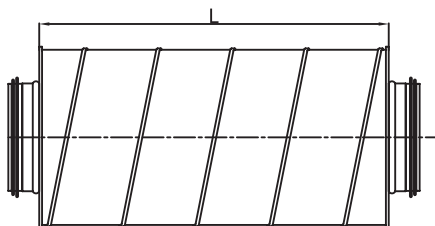
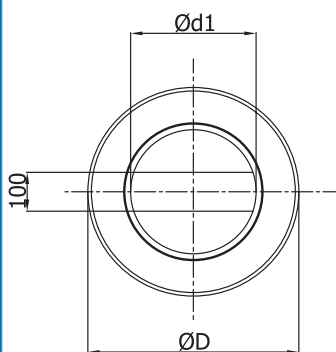
100 mm dla SIBL-100 - depending on the dimension of the outer casing

Example identification

Product code: **SIBL - aaa - bbb**

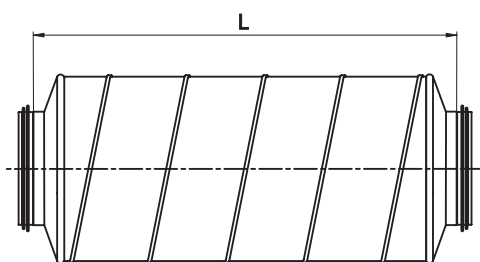
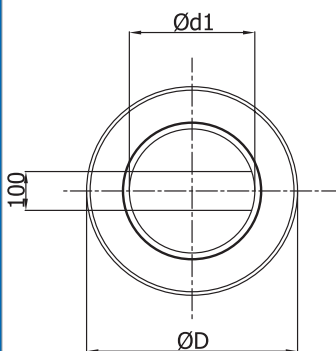


Dimensions



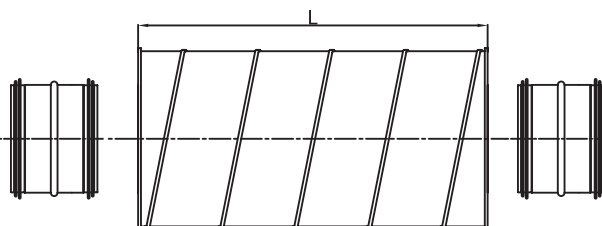
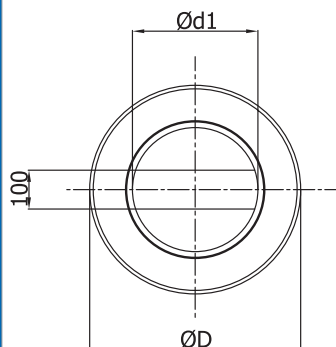
Cross-section for individual types: SIBL, SIBRL, $d_1 \leq 315$ mm.

Not applicable diameters: D-100, D-125, D-160, D-200, D-250 - in the embodiment of the insulation thickness of 50 mm.



Cross-section for silencers: SIBL, SIBRL in the embodiment of the insulation thickness of 50 mm and applicable diameters: D-100, D-125, D-160, D-200, d-250.

Silencers made with pressed reductions.



Cross-section for individual types: SIBL, SIBRL, $d_1 > 315$ mm

Circular silencers

SIBL

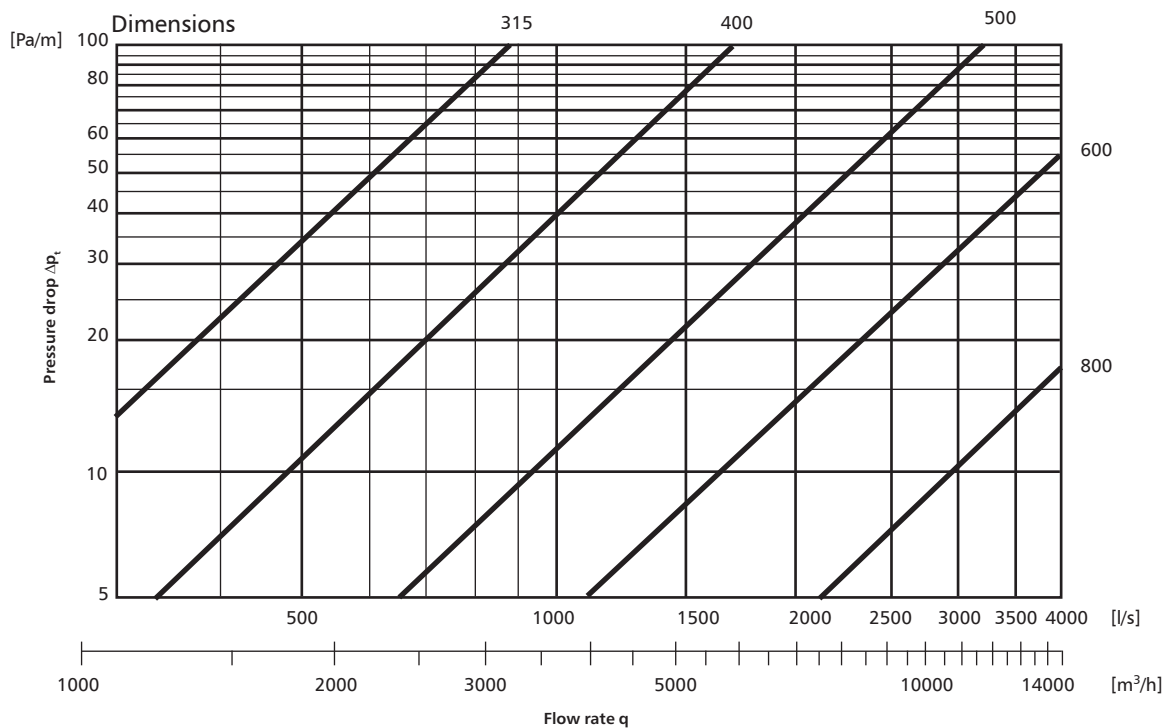
[Download Wentyle](#)
[Download AlnorCAM](#)
[Buy via B2B](#)

Dimensions

SIBL - 100 mm thickness insulation

Description	d_i rated [mm]	D rated [mm]	L [mm]	attenuation [dB] for frequency [Hz]						weight [kg]
				125	250	500	1000	2000	4000	
SIBL 315-600	315	500	600	7	15	18	26	34	24	15
315-900	315	500	900	11	18	26	37	40	28	22
315-1200	315	500	1200	15	21	33	41	46	40	29
SIBL 400-600	400	600	600	8	9	16	22	24	19	20
400-900	400	600	900	11	14	22	34	32	23	30
400-1200	400	600	1200	11	21	30	38	43	28	40
SIBL 500-900	500	710	900	8	12	19	27	21	19	40
500-1200	500	710	1200	10	16	26	35	29	22	53
SIBL 630-1200	630	800	1200	8	11	23	38	23	19	62
630-1500	630	800	1500	10	15	23	39	26	20	78
SIBL 800-1200	800	1000	1200	5	9	17	23	21	16	80
800-1500	800	1000	1500	5	12	19	26	23	18	99

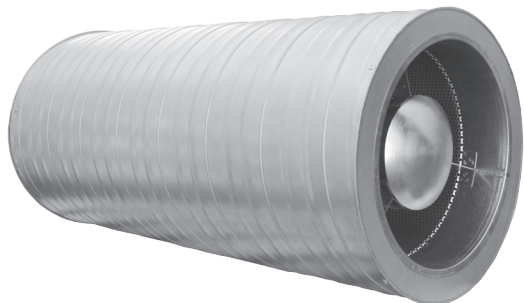
Technical Data



Circular silencers

SIBOL

[Download Wentyle](#)
[Download AlnorCAM](#)
[Buy via B2B](#)



Description

The silencers are usually supplied with SPIRAL®system sealing. Diameters $d_1 > 315$ mm require additional NSL couplings to be ordered, which should be installed in the silencer prior to installation. These male ends are not silencer parts, and they should be ordered separately.

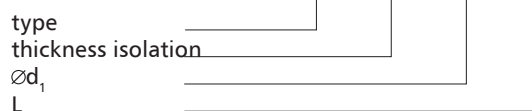
Glass mineral wool inside with thickness:

50 mm dla SIBOL-50 - depending on the dimension of the outer casing

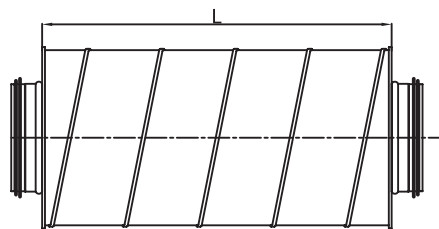
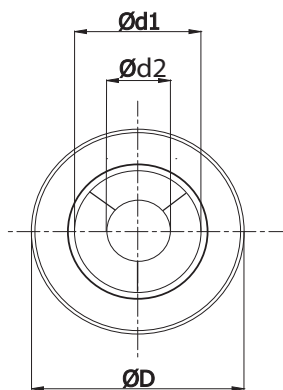
100 mm dla SIBOL-50 - depending on the dimension of the outer casing

Example identification

Product code: SIBOL - iii - aaa - bbb

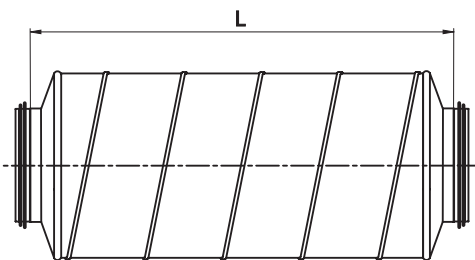
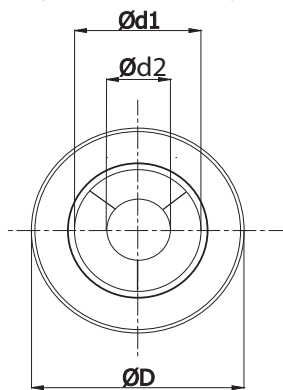


Dimensions



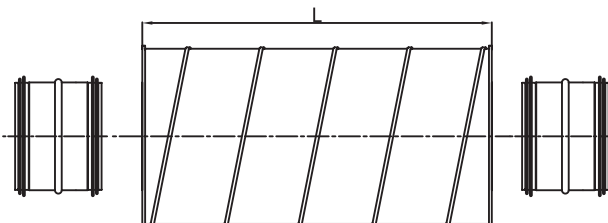
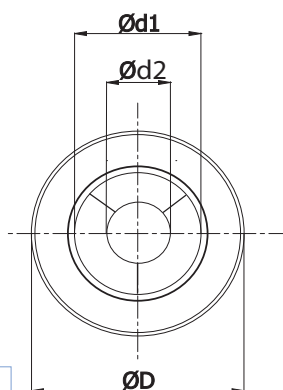
Cross-section for individual types: SIBOL, SIBROL, $d_1 \leq 315$ mm.

Not applicable diameters: D-100, D-125, D-160, D-200, D-250 - in the embodiment of the insulation thickness of 50 mm.



Cross-section for silencers: SIBOL, SIBROL in the embodiment of the insulation thickness of 50 mm and applicable diameters: D-100, D-125, D-160, D-200, d-250.

Silencers made with pressed reductions.



Cross-section for individual types: SIBOL, SIBROL, $d_1 > 315$ mm

Circular silencers

SIBOL

[Download Wentyle](#)
[Download AlnorCAM](#)
[Buy via B2B](#)

Dimensions

SIBOL-50 - 50 mm insulation

Description	Ød ₁ [mm]	D [mm]	Ød ₂ [mm]	L [mm]	weight [kg]
* SIBOL-50-200-300	200	300	100	350	2,95
* SIBOL-50-200-600	200	300	100	650	5,60
* SIBOL-50-200-900	200	300	100	950	8,25
* SIBOL-50-200-1200	200	300	100	1250	10,95
SIBOL-50-224-300	224	315	112	300	3,70
SIBOL-50-224-600	224	315	112	600	7,10
SIBOL-50-224-900	224	315	112	900	10,45
SIBOL-50-224-1200	224	315	112	1200	13,85
* SIBOL-50- 250-300	250	355	125	350	3,95
* SIBOL-50- 250-600	250	355	125	650	7,50
* SIBOL-50- 250-900	250	355	125	950	11,00
*SIBOL-50- 250-1200	250	355	125	1250	14,55
SIBOL-50- 280-300	280	400	140	300	4,50
SIBOL-50- 280-600	280	400	140	600	8,55
SIBOL-50- 280-900	280	400	140	900	12,55
SIBOL-50- 280-1200	280	400	140	1200	16,60
SIBOL-50- 300-300	300	400	150	300	4,65
SIBOL-50- 300-600	300	400	150	600	8,85
SIBOL-50- 300-900	300	400	150	900	13,00
SIBOL-50- 300-1200	300	400	150	1200	17,15
SIBOL-50- 315-300	315	400	150	300	5,00
SIBOL-50- 315-600	315	400	150	600	9,50
SIBOL-50- 315-900	315	400	150	900	14,00
SIBOL-50- 315-1200	315	400	150	1200	18,50
SIBOL-50- 355-300	355	400	180	300	5,60
SIBOL-50- 355-600	355	450	180	600	10,55
SIBOL-50- 355-900	355	450	180	900	15,50
SIBOL-50- 355-1200	355	450	180	1200	20,45
SIBOL-50- 400-300	400	500	200	300	6,00
SIBOL-50- 400-600	400	500	200	600	11,20
SIBOL-50- 400-900	400	500	200	900	16,45
SIBOL-50- 400-1200	400	500	200	1200	21,65
SIBOL-50- 450-300	450	560	225	300	7,85
SIBOL-50- 450-600	450	560	225	600	14,75
SIBOL-50- 450-900	450	560	225	900	21,60
SIBOL-50- 450-1200	450	560	225	1200	28,50
SIBOL-50- 500-300	500	600	250	300	8,75
SIBOL-50- 500-600	500	600	250	600	16,40
SIBOL-50- 500-900	500	600	250	900	24,10
SIBOL-50- 500-1200	500	600	250	1200	31,70

Description	Ød ₁ [mm]	D [mm]	Ød ₂ [mm]	L [mm]	weight [kg]
SIBOL-50- 560-300	560	630	280	300	9,80
SIBOL-50- 560-600	560	630	280	600	18,30
SIBOL-50- 560-900	560	630	280	900	26,75
SIBOL-50- 560-1200	560	630	280	1200	35,25
SIBOL-50- 600-300	600	710	300	300	10,30
SIBOL-50- 600-600	600	710	300	600	19,15
SIBOL-50- 600-900	600	710	300	900	28,00
SIBOL-50- 600-1200	600	710	300	1200	36,85
SIBOL-50- 630-300	630	710	315	300	11,20
SIBOL-50- 630-600	630	710	315	600	20,85
SIBOL-50- 630-900	630	710	315	900	30,50
SIBOL-50- 630-1200	630	710	315	1200	40,15
SIBOL-50- 710-300	710	800	355	300	14,55
SIBOL-50- 710-600	710	800	355	600	26,90
SIBOL-50- 710-900	710	800	355	900	40,00
SIBOL-50- 710-1200	710	800	355	1200	51,65
SIBOL-50- 800-300	800	900	355	300	15,65
SIBOL-50- 800-600	800	900	355	600	28,60
SIBOL-50- 800-900	800	900	355	900	41,55
SIBOL-50- 800-1200	800	900	355	1200	54,50
SIBOL-50- 900-300	900	1000	450	300	18,25
SIBOL-50- 900-600	900	1000	450	600	32,25
SIBOL-50- 900-900	900	1000	450	900	46,50
SIBOL-50- 900-1200	900	1000	450	1200	60,35
SIBOL-50- 1000-300	1000	1120	500	300	21,30
SIBOL-50- 1000-600	1000	1120	500	600	37,40
SIBOL-50- 1000-900	1000	1120	500	900	52,50
SIBOL-50- 1000-1200	1000	1120	500	1200	69,45

* made with pressed lids

Dimensions**SIBOL-100 - 100 mm insulation**

Description	Ød ₁ [mm]	D [mm]	Ød ₂ [mm]	L [mm]	weight [kg]
SIBOL-100-200-300	200	400	100	300	
SIBOL-100-200-600	200	400	100	600	
SIBOL-100-200-900	200	400	100	900	
SIBOL-100-200-1200	200	400	100	1200	
SIBOL-100-200-1500	200	400	100	1500	
SIBOL-100-224-300	224	450	112	300	
SIBOL-100-224-600	224	450	112	600	
SIBOL-100-224-900	224	450	112	900	
SIBOL-100-224-1200	224	450	112	1200	
SIBOL-100-224-1500	224	450	112	1500	
SIBOL-100-250-300	250	450	125	300	
SIBOL-100-250-600	250	450	125	600	
SIBOL-100-250-900	250	450	125	900	
SIBOL-100-250-1200	250	450	125	1200	
SIBOL-100-250-1500	250	450	125	1500	
SIBOL-100-280-300	280	500	140	300	
SIBOL-100-280-600	280	500	140	600	
SIBOL-100-280-900	280	500	140	900	
SIBOL-100-280-1200	280	500	140	1200	
SIBOL-100-280-1500	280	500	140	1500	
SIBOL-100-300-300	300	500	150	300	
SIBOL-100-300-600	300	500	150	600	
SIBOL-100-300-900	300	500	150	900	
SIBOL-100-300-1200	300	500	150	1200	
SIBOL-100-300-1500	300	500	150	1500	
SIBOL-100-315-300	315	500	150	300	
SIBOL-100-315-600	315	500	150	600	
SIBOL-100-315-900	315	500	150	900	
SIBOL-100-315-1200	315	500	150	1200	
SIBOL-100-315-1500	315	500	150	1500	
SIBOL-100-355-300	355	560	180	300	
SIBOL-100-355-600	355	560	180	600	
SIBOL-100-355-900	355	560	180	900	
SIBOL-100-355-1200	355	560	180	1200	
SIBOL-100-355-1500	355	560	180	1500	
SIBOL-100-400-300	400	600	200	300	
SIBOL-100-400-600	400	600	200	600	
SIBOL-100-400-900	400	600	200	900	
SIBOL-100-400-1200	400	600	200	1200	
SIBOL-100-400-1500	400	600	200	1500	

Description	Ød ₁ [mm]	D [mm]	Ød ₂ [mm]	L [mm]	weight [kg]
SIBOL-100-450-300	450	630	225	300	
SIBOL-100-450-600	450	630	225	600	
SIBOL-100-450-900	450	630	225	900	
SIBOL-100-450-1200	450	630	225	1200	
SIBOL-100-450-1500	450	630	225	1500	
SIBOL-100-500-300	500	710	250	300	
SIBOL-100-500-600	500	710	250	600	
SIBOL-100-500-900	500	710	250	900	
SIBOL-100-500-1200	500	710	250	1200	
SIBOL-100-500-1500	500	710	250	1500	
SIBOL-100-560-300	560	800	280	300	
SIBOL-100-560-600	560	800	280	600	
SIBOL-100-560-900	560	800	280	900	
SIBOL-100-560-1200	560	800	280	1200	
SIBOL-100-560-1500	560	800	280	1500	
SIBOL-100-600-300	600	800	300	300	
SIBOL-100-600-600	600	800	300	600	
SIBOL-100-600-900	600	800	300	900	
SIBOL-100-600-1200	600	800	300	1200	
SIBOL-100-600-1500	600	800	300	1500	
SIBOL-100-630-300	630	800	315	300	
SIBOL-100-630-600	630	800	315	600	
SIBOL-100-630-900	630	800	315	900	
SIBOL-100-630-1200	630	800	315	1200	
SIBOL-100-630-1500	630	800	315	1500	
SIBOL-100-710-300	710	900	355	300	
SIBOL-100-710-600	710	900	355	600	
SIBOL-100-710-900	710	900	355	900	
SIBOL-100-710-1200	710	900	355	1200	
SIBOL-100-710-1500	710	900	355	1500	
SIBOL-100-800-300	800	1000	355	300	
SIBOL-100-800-600	800	1000	355	600	
SIBOL-100-800-900	800	1000	355	900	
SIBOL-100-800-1200	800	1000	355	1200	
SIBOL-100-800-1500	800	1000	355	1500	
SIBOL-100-1000-300	1000	1120	450	300	
SIBOL-100-1000-600	1000	1120	450	600	
SIBOL-100-1000-900	1000	1120	450	900	
SIBOL-100-1000-1200	1000	1120	450	1200	
SIBOL-100-1000-1500	1000	1120	450	1500	

Circular silencers

SIBOL

[Download Wentyle](#)
[Download AlnorCAM](#)
[Buy via B2B](#)

Dimensions

SIBOL-100 - 100 mm insulation

Description	suppression [dB] for frequency [Hz]						
	125	250	500	1000	2000	4000	8000
SIBOL 200-300	7	10	12	19	25	26	22
200-600	7	13	20	30	34	34	28
200-900	9	16	29	44	43	41	35
200-1200	10	21	35	51	56	50	39
200-1500	10	24	43	63	65	58	45
SIBOL 224-300	6	9	11	16	21	22	18
224-600	7	13	19	28	31	30	24
224-900	8	16	28	41	40	37	31
224-1200	10	21	34	49	52	46	35
224-1500	10	24	42	60	61	54	41
SIBOL 250-300	6	9	10	14	18	18	15
250-600	7	12	18	26	27	26	21
250-900	8	15	27	39	36	34	28
250-1200	9	20	33	46	49	43	32
250-1500	9	23	41	58	58	51	38
SIBOL 280-300	6	8	10	13	15	16	13
280-600	6	12	17	24	25	24	19
280-900	8	15	26	37	34	31	26
280-1200	9	20	32	45	47	40	30
280-1500	9	23	40	56	56	48	36
SIBOL 300-300	5	8	9	11	13	13	11
300-600	6	11	17	22	22	21	17
300-900	7	14	25	36	31	29	24
300-1200	9	19	31	43	44	38	28
300-1500	9	22	39	55	56	46	34
SIBOL 315-300	5	8	9	11	13	13	11
315-600	6	11	17	22	23	21	17
315-900	7	14	25	36	31	29	24
315-1200	9	19	31	43	44	38	28
315-1500	9	22	39	55	53	46	34
SIBOL 355-300	5	7	8	8	13	9	7
355-600	5	11	15	19	22	17	13
355-900	7	14	24	33	31	25	20
355-1200	8	19	30	40	44	34	24
355-1500	8	22	38	52	53	42	31
SIBOL 400-300	5	7	7	6	13	7	5
400-600	5	10	14	17	23	15	11
400-900	6	13	23	31	31	22	18
400-1200	8	18	29	38	40	31	22
400-1500	8	21	37	50	49	39	28

SIBOL-100 - 100 mm insulation

Description	suppression [dB] for frequency [Hz]						
	125	250	500	1000	2000	4000	8000
SIBOL 450-300	4	6	6	4	9	4	3
450-600	5	10	14	16	19	13	9
450-900	6	13	22	29	28	20	16
450-1200	8	18	28	36	38	29	20
450-1500	7	21	36	48	47	37	26
SIBOL 500-300	4	6	5	3	6	3	2
500-600	4	9	13	14	16	11	8
500-900	6	12	21	28	25	18	15
500-1200	7	17	27	35	36	27	19
500-1500	7	20	35	47	44	35	25
SIBOL 560-300	4	6	4	1	4	1	0
560-600	4	9	12	13	14	9	6
560-900	6	12	21	26	23	16	13
560-1200	7	17	27	33	34	25	17
560-1500	7	20	35	45	43	33	23
SIBOL 600-300	4	5	4	1	2	1	0
600-600	4	9	12	12	12	8	6
600-900	6	12	20	26	21	16	13
600-1200	7	17	26	33	32	25	17
600-1500	7	20	34	45	41	33	23
SIBOL 630-300	3	5	4	0	1	0	-1
630-600	4	9	12	12	10	8	6
630-900	5	12	20	25	19	15	12
630-1200	7	17	26	33	31	24	16
630-1500	7	20	34	44	40	32	23
SIBOL 710-300	3	5	3	-2	0	-2	-2
710-600	4	8	11	10	10	6	4
710-900	5	11	19	23	19	13	11
710-1200	6	16	25	30	31	22	15
710-1500	6	19	33	42	40	30	21
SIBOL 800-300	3	4	2	-3	-1	-4	-4
800-600	3	8	10	8	9	4	2
800-900	5	11	18	21	18	12	9
800-1200	6	16	24	29	29	20	13
800-1500	6	18	32	40	36	28	19
SIBOL 1000-300	2	4	1	-6	-5	-6	-6
1000-600	3	7	9	6	5	2	1
1000-900	4	10	17	19	14	10	7
1000-1200	6	15	23	27	25	18	11
1000-1500	6	18	31	38	33	26	18

Circular silencers

SIBOL

[Download Wentyle](#)
[Download AlnorCAM](#)
[Buy via B2B](#)

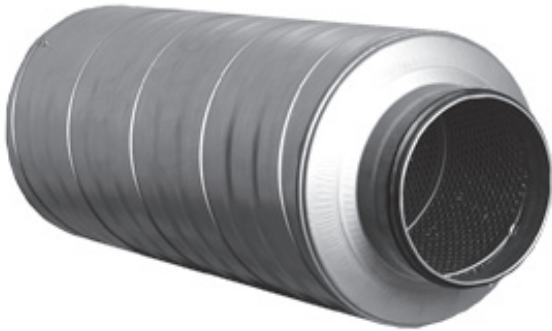
Dimensions

SIBOL-100 - 100 mm insulation

Description	pressure drop [Pa] for air velocity [m/s]				
	2	4	8	10	12
SIBOL-100-200-300	2,46	9,86	39,44	61,62	88,73
SIBOL-100-200-600	2,93	11,71	46,85	73,20	105,41
SIBOL-100-200-900	3,65	14,59	58,37	91,20	131,33
SIBOL-100-200-1200	3,88	15,52	62,09	97,02	139,71
SIBOL-100-200-1500	4,17	16,70	66,79	104,35	150,27
SIBOL-100-224-300	2,27	9,08	36,33	56,77	81,75
SIBOL-100-224-600	2,73	10,94	43,75	68,35	98,43
SIBOL-100-224-900	3,45	13,81	55,26	86,34	124,33
SIBOL-100-224-1200	3,69	14,75	58,99	92,17	132,73
SIBOL-100-224-1500	3,97	15,89	63,58	99,34	143,05
SIBOL-100-250-300	2,07	8,28	33,13	51,76	74,54
SIBOL-100-250-600	2,53	10,13	40,54	63,34	91,21
SIBOL-100-250-900	3,25	13,02	52,07	81,36	117,16
SIBOL-100-250-1200	3,49	13,95	55,78	87,16	125,51
SIBOL-100-250-1500	4,06	16,22	64,90	101,40	146,02
SIBOL-100-280-300	2,15	8,61	34,44	53,82	77,50
SIBOL-100-280-600	2,62	10,46	41,86	65,40	94,18
SIBOL-100-280-900	3,34	13,34	53,38	83,40	120,10
SIBOL-100-280-1200	3,57	14,28	57,10	89,22	128,48
SIBOL-100-280-1500	3,64	14,56	58,26	91,03	131,08
SIBOL-100-300-300	1,74	6,95	27,81	43,45	62,56
SIBOL-100-300-600	2,20	8,80	35,22	55,03	79,24
SIBOL-100-300-900	2,92	11,68	46,73	73,02	105,15
SIBOL-100-300-1200	3,15	12,62	50,46	78,85	113,54
SIBOL-100-300-1500	3,65	14,60	58,41	91,26	131,41
SIBOL-100-315-300	1,75	6,99	27,96	43,68	62,90
SIBOL-100-315-600	2,21	8,84	35,37	55,26	79,57
SIBOL-100-315-900	2,93	11,72	46,89	73,26	105,49
SIBOL-100-315-1200	3,16	12,65	50,61	79,08	113,88
SIBOL-100-315-1500	3,34	13,37	53,48	83,57	120,34
SIBOL-100-355-300	1,18	4,73	18,92	29,57	42,58
SIBOL-100-355-600	0,64	2,58	10,31	16,10	23,19
SIBOL-100-355-900	2,62	10,49	41,97	65,58	94,44
SIBOL-100-355-1200	2,86	11,42	45,69	71,39	102,80
SIBOL-100-355-1500	2,88	11,52	46,08	72,00	103,68
SIBOL-100-400-300	0,98	3,91	15,63	24,42	35,16
SIBOL-100-400-600	1,44	5,76	23,04	36,00	51,84
SIBOL-100-400-900	2,16	8,64	34,56	54,00	77,76
SIBOL-100-400-1200	2,39	9,57	38,28	59,82	86,14
SIBOL-100-400-1500	2,90	11,61	46,43	72,54	104,46

SIBOL-100 - 100 mm insulation

Description	pressure drop [Pa] for air velocity [m/s]				
	2	4	8	10	12
SIBOL-100-450-300	1,00	3,99	15,97	24,96	35,94
SIBOL-100-450-600	1,46	5,85	23,39	36,54	52,62
SIBOL-100-450-900	2,18	8,73	34,91	54,54	78,54
SIBOL-100-450-1200	2,41	9,66	38,63	60,36	86,92
SIBOL-100-450-1500	2,71	10,84	43,35	67,73	97,54
SIBOL-100-500-300	0,81	3,22	12,90	20,15	29,02
SIBOL-100-500-600	1,27	5,08	20,31	31,73	45,70
SIBOL-100-500-900	1,99	7,96	31,83	49,74	71,63
SIBOL-100-500-1200	2,22	8,89	35,55	55,55	80,00
SIBOL-100-500-1500	2,64	10,56	42,24	66,00	95,04
SIBOL-100-560-300	0,74	2,95	11,79	18,42	26,52
SIBOL-100-560-600	1,20	4,80	19,20	30,00	43,20
SIBOL-100-560-900	1,92	7,68	30,72	48,00	69,12
SIBOL-100-560-1200	2,15	8,61	34,44	53,82	77,50
SIBOL-100-560-1500	2,38	9,51	38,03	59,42	85,56
SIBOL-100-600-300	0,47	1,89	7,58	11,84	17,05
SIBOL-100-600-600	0,94	3,75	14,99	23,42	33,72
SIBOL-100-600-900	1,66	6,62	26,50	41,40	59,62
SIBOL-100-600-1200	1,89	7,56	30,23	47,24	68,02
SIBOL-100-600-1500	2,29	9,15	36,61	57,20	82,37
SIBOL-100-630-300	0,38	1,54	6,16	9,62	13,85
SIBOL-100-630-600	0,85	3,39	13,57	21,20	30,53
SIBOL-100-630-900	1,57	6,27	25,08	39,18	56,42
SIBOL-100-630-1200	1,80	7,20	28,81	45,02	64,83
SIBOL-100-630-1500	2,07	8,28	33,12	51,74	74,51
SIBOL-100-710-300	0,17	0,67	2,66	4,16	6,00
SIBOL-100-710-600	0,63	2,52	10,08	15,74	22,67
SIBOL-100-710-900	1,35	5,40	21,58	33,72	48,56
SIBOL-100-710-1200	1,58	6,33	25,32	39,56	56,97
SIBOL-100-710-1500	1,79	7,16	28,63	44,74	64,43
SIBOL-100-800-300	-0,11	-0,45	-1,82	-2,84	-4,09
SIBOL-100-800-600	0,35	1,40	5,59	8,74	12,59
SIBOL-100-800-900	1,07	4,28	17,13	26,76	38,53
SIBOL-100-800-1200	1,30	5,21	20,84	32,56	46,89
SIBOL-100-800-1500	1,39	5,56	22,23	34,73	50,01
SIBOL-100-1000-300	-0,51	-2,06	-8,23	-12,85	-18,51
SIBOL-100-1000-600	-0,05	-0,20	-0,81	-1,27	-1,83
SIBOL-100-1000-900	0,67	2,68	10,71	16,74	24,11
SIBOL-100-1000-1200	0,90	3,61	14,43	22,55	32,47
SIBOL-100-1000-1500	0,72	2,88	11,52	18,00	25,92



Description

The silencers are usually supplied with SPIRAL®system sealing. Diameters $d_1 > 315$ mm require additional NSL couplings to be ordered, which should be installed in the silencer prior to installation. These male ends are not silencer parts, and they should be ordered separately.

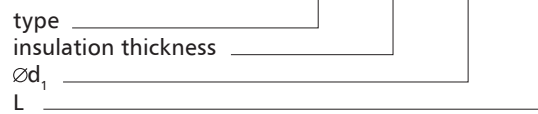
Stone mineral wool inside with thickness:

100 mm dla SIRL-10 – depending on the dimension of the outer casing.

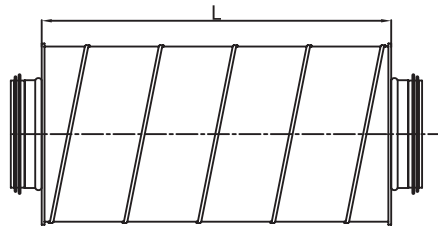
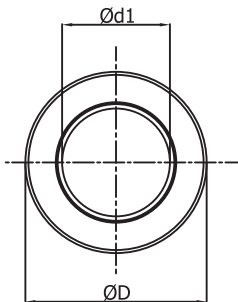
150 mm dla SIRL-15 – depending on the dimension of the outer casing.

Example identification

Product code: **SIRL - iii - aaa - bbb**

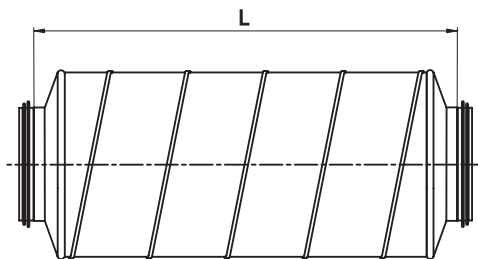
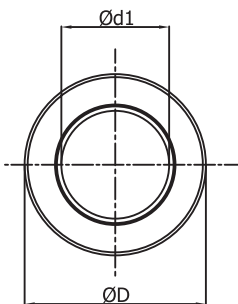


Dimensions



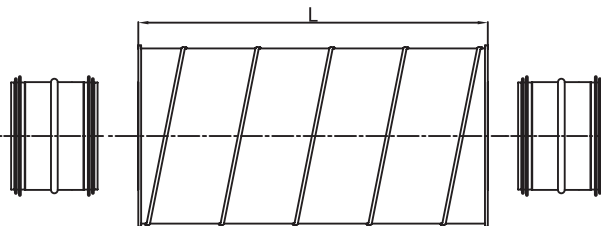
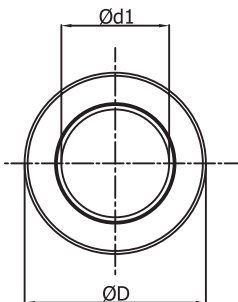
Cross-section for individual types: SIL, SIRL, $d_1 \leq 315$ mm.

Not applicable diameters: D-100, D-125, D-160, D-200, D-250 - in the embodiment of the insulation thickness of 50 mm.



Cross-section for silencers: SIL, SIRL in the embodiment of the insulation thickness of 50 mm and applicable diameters: D-100, D-125, D-160, D-200, d-250.

Silencers made with pressed reductions.



Cross-section for individual types: SIL, SIRL, $d_1 > 315$ mm

Dimensions

SIRL-10 - 100 mm thickness insulation

Description	$\varnothing d_1$ rated [mm]	D rated [mm]	L [mm]	attenuation [dB] for frequency [Hz]						weight [kg]
				125	250	500	1000	2000	4000	
SIRL 80-300	80	280	300	8	13	19	27	33	29	4
80-600	80	280	600	17	26	29	53	53	45	6
80-900	80	280	900	25	23	32	55	56	46	9
80-1000	80	280	1000	24	27	33	55	58	47	10
SIRL 100-300	100	300	300	6	12	18	23	28	23	5
100-600	100	300	600	13	23	34	46	52	40	8
100-900	100	300	900	17	30	39	54	55	46	10
100-1000	100	300	1000	19	36	39	56	51	40	11
SIRL 125-300	125	315	300	6	10	15	19	23	18	5
125-600	125	315	600	11	20	30	40	45	30	8
125-900	125	315	900	15	27	38	56	62	39	11
125-1000	125	315	1000	16	31	35	48	51	30	11
125-1200	125	315	1200	15	34	38	56	59	45	13
SIRL 160-300	160	355	300	4	8	12	16	21	14	6
160-600	160	355	600	9	16	28	33	37	21	9
160-900	160	355	900	11	24	35	49	51	27	12
160-1000	160	355	1000	12	25	38	54	54	29	14
160-1200	160	355	1200	12	29	41	56	57	33	16
SIRL 200-300	200	400	300	6	12	22	28	28	18	12
200-600	200	400	600	8	18	28	40	37	23	17
200-900	200	400	900	9	21	29	44	38	25	19
200-1000	200	400	1000	10	25	33	50	42	27	23
200-1200	200	400	1200	10	25	33	50	42	27	23
SIRL 250-300	250	450	300	5	12	20	24	23	14	14
250-600	250	450	600	6	17	30	34	28	17	20
250-900	250	450	900	7	18	31	36	30	18	20
250-1000	250	450	1000	7	18	31	36	30	18	20
250-1200	250	450	1200	9	22	35	39	33	20	26
SIRL 315-300	315	500	300	4	8	14	17	14	12	16
315-600	315	500	600	4	12	21	26	19	15	22
315-900	315	500	900	5	13	23	29	20	16	26
315-1000	315	500	1000	5	13	23	29	20	16	26
315-1200	315	500	1200	7	15	28	35	24	18	29
SIRL 400-300	400	600	300	5	12	19	22	18	13	29
400-600	400	600	600	5	13	22	24	20	14	31
400-900	400	600	900	7	16	22	29	22	15	36
400-1000	400	600	1000	7	16	22	29	22	15	36
400-1200	400	600	1200	9	20	32	35	24	17	43
400-1500	400	600	1500	9	20	32	35	24	17	43
SIRL 500-300	500	710	300	4	11	18	16	14	11	35
500-600	500	710	600	5	12	19	18	15	12	38
500-900	500	710	900	6	13	21	21	17	14	43
500-1000	500	710	1000	6	13	21	21	17	14	43
500-1200	500	710	1200	7	19	27	26	19	15	52
500-1500	500	710	1500	7	19	27	26	19	15	52
SIRL 630-300	630	900	300	5	8	14	12	13	9	44
630-600	630	900	600	5	8	14	12	13	9	44
630-900	630	900	900	5	8	14	12	13	9	44
630-1000	630	900	1000	5	10	15	13	14	10	49
630-1200	630	900	1200	6	13	18	15	15	12	56
630-1500	630	900	1500	7	15	23	18	17	13	69
SIRL 800-300	800	1000	300	4	8	11	9	9	8	70
800-600	800	1000	600	5	9	13	11	11	9	80
800-900	800	1000	900	6	12	17	14	14	11	88
800-1000	800	1000	1000	6	12	17	14	14	11	88
800-1200	800	1000	1200	6	12	17	14	14	11	88
800-1500	800	1000	1500	6	12	17	14	14	11	88

Description	$\varnothing d_1$ rated [mm]	D rated [mm]	L [mm]	attenuation [dB] for frequency [Hz]						weight [kg]
				125	250	500	1000	2000	4000	
630-1000	630	900	1000	5	10	15	13	14	10	49
630-1200	630	900	1200	6	13	18	15	15	12	56
630-1500	630	900	1500	7	15	23	18	17	13	69
SIRL 800-1000	800	1000	1000	4	8	11	9	9	8	70
800-1200	800	1000	1200	5	9	13	11	11	9	80
800-1500	800	1000	1500	6	12	17	14	14	11	88

SIRL-15 - 150 mm thickness insulation

Description	$\varnothing d_1$ rated [mm]	D rated [mm]	L [mm]	attenuation [dB] for frequency [Hz]						weight [kg]
				125	250	500	1000	2000	4000	
SIRL 80-1000	80	400	1000	26	22	27	50	55	47	19
SIRL 100-1000	100	400	1000	25	36	42	59	53	47	21
SIRL 125-1000	125	450	1000	22	34	38	51	50	40	22
125-1200	125	450	1200	21	36	40	62	55	46	25
SIRL 160-1000	160	450	1000	16	28	40	51	52	28	22
160-1200	160	450	1200	17	33	44	58	56	32	25
SIRL 200-1000	200	500	1000	14	24	32	45	36	24	26
200-1200	200	500	1200	15	25	36	49	42	26	31
SIRL 250-1000	250	560	1000	12	22	31	37	31	18	30
250-1200	250	560	1200	15	26	36	41	34	20	35



Description

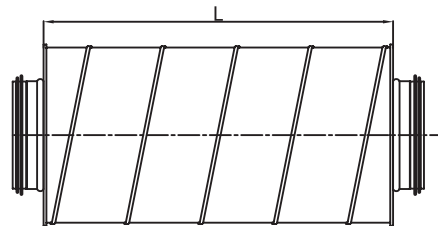
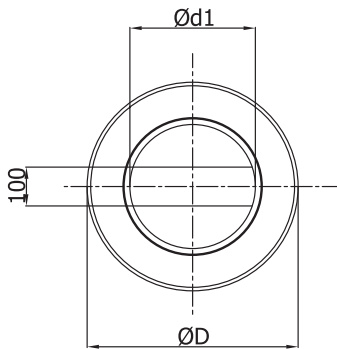
The silencers are usually supplied with SPIRAL® system sealing. Diameters $d_1 > 315$ mm require additional NSL couplings to be ordered, which should be installed in the silencer prior to installation. These male ends are not silencer parts, and they should be ordered separately. Stone mineral wool inside with thickness: **100 mm dla SIBRL-10** – depending on the dimension of the outer casing.

Example identification

Product code: **SIBRL - aaa - bbb**

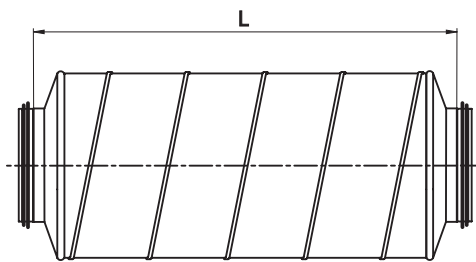
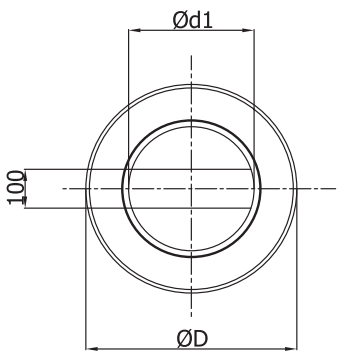
type _____
 $\varnothing d_1$ _____
 L _____

Dimensions



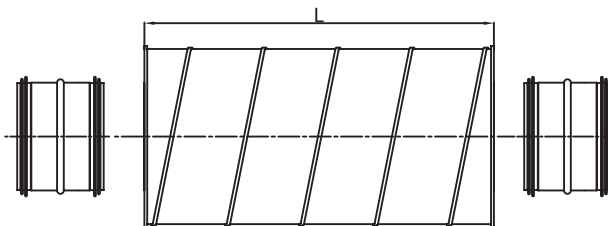
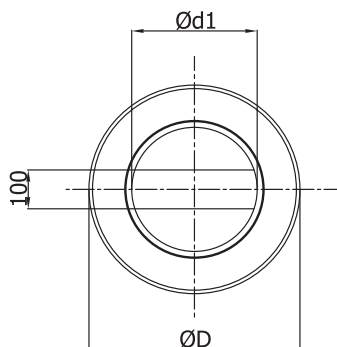
Cross-section for individual types: SIBL, SIBRL, $d_1 \leq 315$ mm.

Not applicable diameters: D-100, D-125, D-160, D-200, D-250 - in the embodiment of the insulation thickness of 50 mm.



Cross-section for silencers: SIBL, SIBRL in the embodiment of the insulation thickness of 50 mm and applicable diameters: D-100, D-125, D-160, D-200, D-250.

Silencers made with pressed reductions.



Cross-section for individual types: SIBL, SIBRL, $d_1 > 315$ mm

Circular silencers

SIBRL

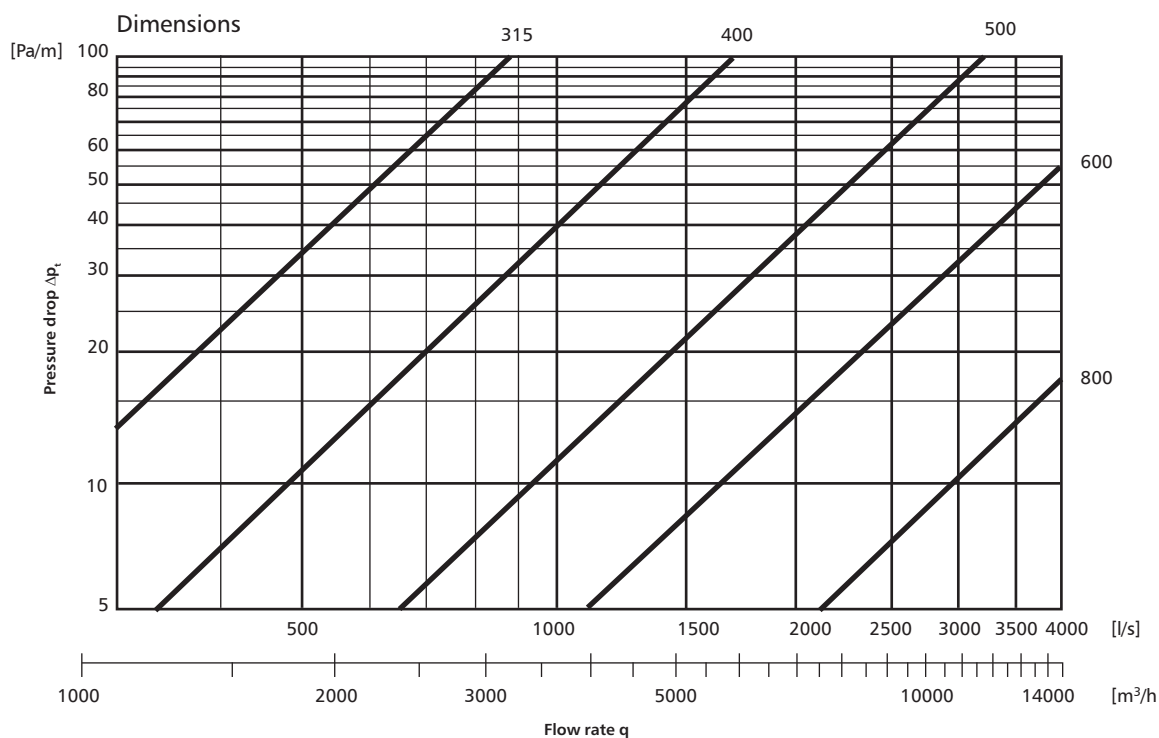
[Download Wentyle](#)
[Download AlnorCAM](#)
[Buy via B2B](#)

Dimensions

SIBRL - 100 mm thickness insulation

Description	$\varnothing d_1$ rated [mm]	D rated [mm]	L [mm]	attenuation [dB] weight for frequency [Hz] [kg]						
				125	250	500	1000	2000	4000	
SIBRL 315-1000	315	500	1000	8	20	34	43	52	37	30
315-1200	315	500	1200	11	22	37	46	54	40	35
SIBRL 400-1000	400	600	1000	8	18	30	37	42	28	39
400-1200	400	600	1200	10	22	33	44	44	31	43
400-1500	400	600	1500	12	27	29	47	47	34	53
SIBRL 500-1000	500	710	1000	7	16	26	31	32	20	46
500-1200	500	710	1200	8	17	29	37	37	22	53
500-1500	500	710	1500	9	25	37	45	43	25	67
SIBRL 630-1000	630	900	1000	6	14	21	26	24	16	59
630-1200	630	900	1200	8	16	26	30	27	18	68
630-1500	630	900	1500	9	20	31	37	31	20	87
SIBRL 800-1000	800	1000	1000	5	10	17	21	20	14	84
800-1200	800	1000	1200	6	12	19	24	23	16	99
800-1500	800	1000	1500	7	16	25	30	26	18	112

Technical Data



Circular silencers

SIBROL

[Download Wentyle](#)
[Download AlnorCAM](#)
[Buy via B2B](#)



Description

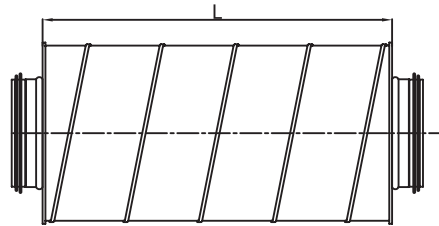
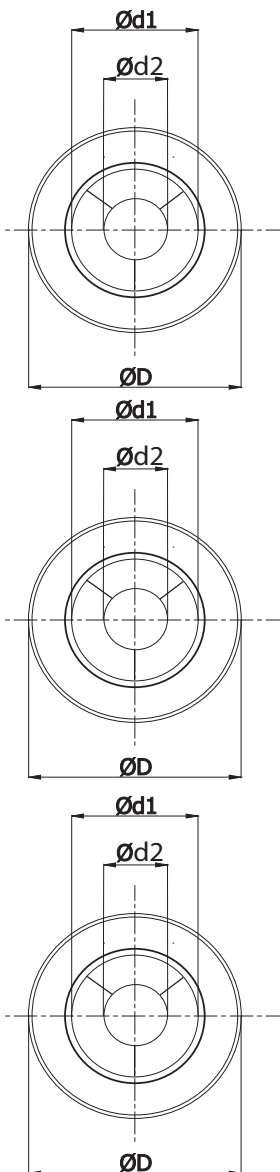
The dampers are shipped with SPIRAL® sealing system as a standard. Diameters $d_1 > 315$ mm require an additional order of NSL connectors which are to be fitted in the damper prior to the installation. Nipple connectors are not an integral part of the damper and have to be ordered separately. Inside, they are padded with mineral wool:
50 mm layer for SIBOL-50 - depending on external casing size
100 mm layer for SIBOL-100 - depending on external casing size

Example identification

Product code **SIBROL - iii - aaa - bbb**

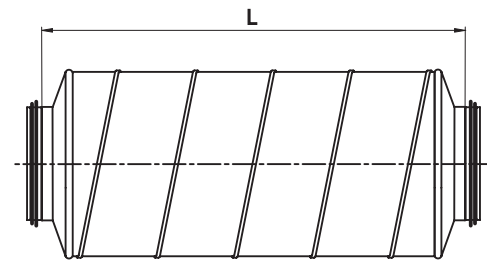
type _____
insulation _____
 $\varnothing d_1$ _____
L _____

Dimensions



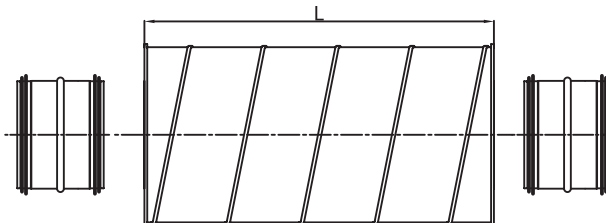
Cross-section for individual types: SIBOL, SIBROL, $d_1 \leq 315$ mm.

Not applicable diameters: D-100, D-125, D-160, D-200, D-250 - in the embodiment of the insulation thickness of 50 mm.



Cross-section for silencers: SIBOL, SIBROL in the embodiment of the insulation thickness of 50 mm and applicable diameters: D-100, D-125, D-160, D-200, D-250.

Silencers made with pressed reductions.



Cross-section for individual types: SIBOL, SIBROL, $d_1 > 315$ mm

Circular silencers

SIBROL

[Download Wentyle](#)
[Download AlnorCAM](#)
[Buy via B2B](#)

Dimensions

SIBROL-50 - 50 mm insulations

Description	Ød ₁ [mm]	D [mm]	Ød ₂ [mm]	L [mm]	weight [kg]
SIBROL-50-200-300*	200	300	100	350	3,03
SIBROL-50-200-600*	200	300	100	650	5,80
SIBROL-50-200-900*	200	300	100	950	8,57
SIBROL-50-200-1200*	200	300	100	1250	11,33
SIBROL-50-224-300	224	315	112	300	3,82
SIBROL-50-224-600	224	315	112	600	7,31
SIBROL-50-224-900	224	315	112	900	10,79
SIBROL-50-224-1200	224	315	112	1200	14,28
SIBROL-50- 250-300*	250	355	125	350	4,05
SIBROL-50- 250-600*	250	355	125	650	7,72
SIBROL-50- 250-900*	250	355	125	950	11,40
SIBROL-50- 250-1200*	250	355	125	1250	15,07
SIBROL-50- 280-300	280	400	140	300	4,62
SIBROL-50- 280-600	280	400	140	600	8,80
SIBROL-50- 280-900	280	400	140	900	12,98
SIBROL-50- 280-1200	280	400	140	1200	17,15
SIBROL-50- 300-300	300	400	150	300	4,81
SIBROL-50- 300-600	300	400	150	600	9,13
SIBROL-50- 300-900	300	400	150	900	13,45
SIBROL-50- 300-1200	300	400	150	1200	17,77
SIBROL-50- 315-300	315	400	150	300	5,14
SIBROL-50- 315-600	315	400	150	600	9,79
SIBROL-50- 315-900	315	400	150	900	14,44
SIBROL-50- 315-1200	315	400	150	1200	19,09
SIBROL-50- 355-300	355	400	180	300	5,77
SIBROL-50- 355-600	355	450	180	600	10,91
SIBROL-50- 355-900	355	450	180	900	16,04
SIBROL-50- 355-1200	355	450	180	1200	21,18
SIBROL-50- 400-300	400	500	200	300	6,18
SIBROL-50- 400-600	400	500	200	600	11,61
SIBROL-50- 400-900	400	500	200	900	17,05
SIBROL-50- 400-1200	400	500	200	1200	22,48
SIBROL-50- 450-300	450	560	225	300	8,04
SIBROL-50- 450-600	450	560	225	600	15,16
SIBROL-50- 450-900	450	560	225	900	22,28
SIBROL-50- 450-1200	450	560	225	1200	29,40
SIBROL-50- 500-300	500	600	250	300	8,99
SIBROL-50- 500-600	500	600	250	600	16,90
SIBROL-50- 500-900	500	600	250	900	24,82
SIBROL-50- 500-1200	500	600	250	1200	32,73

Description	Ød ₁ [mm]	D [mm]	Ød ₂ [mm]	L [mm]	weight [kg]
SIBROL-50- 560-300	560	630	280	300	10,07
SIBROL-50- 560-600	560	630	280	600	18,85
SIBROL-50- 560-900	560	630	280	900	27,62
SIBROL-50- 560-1200	560	630	280	1200	36,40
SIBROL-50- 600-300	600	710	300	300	10,61
SIBROL-50- 600-600	600	710	300	600	19,76
SIBROL-50- 600-900	600	710	300	900	28,92
SIBROL-50- 600-1200	600	710	300	1200	38,07
SIBROL-50- 630-300	630	710	315	300	11,53
SIBROL-50- 630-600	630	710	315	600	21,50
SIBROL-50- 630-900	630	710	315	900	31,47
SIBROL-50- 630-1200	630	710	315	1200	41,44
SIBROL-50- 710-300	710	800	355	300	14,91
SIBROL-50- 710-600	710	800	355	600	27,63
SIBROL-50- 710-900	710	800	355	900	40,36
SIBROL-50- 710-1200	710	800	355	1200	53,09
SIBROL-50- 800-300	800	900	355	300	16,02
SIBROL-50- 800-600	800	900	355	600	29,40
SIBROL-50- 800-900	800	900	355	900	42,78
SIBROL-50- 800-1200	800	900	355	1200	56,16
SIBROL-50- 900-300	900	1000	450	300	18,65
SIBROL-50- 900-600	900	1000	450	600	33,16
SIBROL-50- 900-900	900	1000	450	900	47,67
SIBROL-50- 900-1200	900	1000	450	1200	62,19
SIBROL-50- 1000-300	1000	1120	500	300	21,79
SIBROL-50- 1000-600	1000	1120	500	600	38,35
SIBROL-50- 1000-900	1000	1120	500	900	53,85
SIBROL-50- 1000-1200	1000	1120	500	1200	71,46

* silencers made with pressed reductions

Circular silencers

SIBROL

[Download Wentyle](#)
[Download AlnorCAM](#)
[Buy via B2B](#)

Dimensions

SIBROL-100 - 100 mm insulations

Description	Ød ₁ [mm]	D [mm]	Ød ₂ [mm]	L [mm]	weight [kg]
SIBROL-100-200-300	200	400	100	300	4,49
SIBROL-100-200-600	200	400	100	600	8,46
SIBROL-100-200-900	200	400	100	900	12,42
SIBROL-100-200-1200	200	400	100	1200	16,39
SIBROL-100-224-300	224	450	112	300	5,11
SIBROL-100-224-600	224	450	112	600	9,56
SIBROL-100-224-900	224	450	112	900	14,02
SIBROL-100-224-1200	224	450	112	1200	18,47
SIBROL-100- 250-300	250	450	125	300	5,44
SIBROL-100- 250-600	250	450	125	600	10,13
SIBROL-100- 250-900	250	450	125	900	14,83
SIBROL-100- 250-1200	250	450	125	1200	19,52
SIBROL-100- 280-300	280	500	140	300	6,12
SIBROL-100- 280-600	280	500	140	600	11,36
SIBROL-100- 280-900	280	500	140	900	16,60
SIBROL-100- 280-1200	280	500	140	1200	21,83
SIBROL-100- 300-300	300	500	150	300	6,39
SIBROL-100- 300-600	300	500	150	600	11,81
SIBROL-100- 300-900	300	500	150	900	17,24
SIBROL-100- 300-1200	300	500	150	1200	22,66
SIBROL-100- 315-300	315	500	150	300	7,24
SIBROL-100- 315-600	315	500	150	600	13,52
SIBROL-100- 315-900	315	500	150	900	19,80
SIBROL-100- 315-1200	315	500	150	1200	26,07
SIBROL-100- 355-300	355	560	180	300	7,96
SIBROL-100- 355-600	355	560	180	600	14,65
SIBROL-100- 355-900	355	560	180	900	21,34
SIBROL-100- 355-1200	355	560	180	1200	28,03
SIBROL-100- 400-300	400	600	200	300	8,81
SIBROL-100- 400-600	400	600	200	600	16,13
SIBROL-100- 400-900	400	600	200	900	23,45
SIBROL-100- 400-1200	400	600	200	1200	30,76
SIBROL-100- 450-300	450	630	225	300	10,31
SIBROL-100- 450-600	450	630	225	600	18,77
SIBROL-100- 450-900	450	630	225	900	27,23
SIBROL-100- 450-1200	450	630	225	1200	35,69
SIBROL-100- 500-300	500	710	250	300	11,03
SIBROL-100- 500-600	500	710	250	600	19,89
SIBROL-100- 500-900	500	710	250	900	28,76
SIBROL-100- 500-1200	500	710	250	1200	37,63

Description	Ød ₁ [mm]	D [mm]	Ød ₂ [mm]	L [mm]	weight [kg]
SIBROL-100- 560-300	560	800	280	300	12,77
SIBROL-100- 560-600	560	800	280	600	22,95
SIBROL-100- 560-900	560	800	280	900	33,12
SIBROL-100- 560-1200	560	800	280	1200	43,30
SIBROL-100- 600-300	600	800	300	300	13,54
SIBROL-100- 600-600	600	800	300	600	24,18
SIBROL-100- 600-900	600	800	300	900	34,82
SIBROL-100- 600-1200	600	800	300	1200	45,46
SIBROL-100- 630-300	630	800	315	300	14,05
SIBROL-100- 630-600	630	800	315	600	24,97
SIBROL-100- 630-900	630	800	315	900	35,89
SIBROL-100- 630-1200	630	800	315	1200	46,82
SIBROL-100- 710-300	710	900	355	300	16,50
SIBROL-100- 710-600	710	900	355	600	28,64
SIBROL-100- 710-900	710	900	355	900	40,78
SIBROL-100- 710-1200	710	900	355	1200	52,92
SIBROL-100- 800-300	800	1000	355	300	18,90
SIBROL-100- 800-600	800	1000	355	600	32,52
SIBROL-100- 800-900	800	1000	355	900	46,15
SIBROL-100- 800-1200	800	1000	355	1200	59,77
SIBROL-100- 900-300	900	1120	450	300	23,57
SIBROL-100- 900-600	900	1120	450	600	38,86
SIBROL-100- 900-900	900	1120	450	900	54,15
SIBROL-100- 900-1200	900	1120	450	1200	69,45
SIBROL-100- 1000-300	1000	1250	500	300	27,33
SIBROL-100- 1000-600	1000	1250	500	600	44,19
SIBROL-100- 1000-900	1000	1250	500	900	58,94
SIBROL-100- 1000-1200	1000	1250	500	1200	77,91

Round ventilation acoustic silencers

SIL-GL/SI-GL

[Download Wentyle](#)
[Download AlnorCAM](#)
[Buy via B2B](#)



Description

SI-GL silencers are not provided with any gasket. They are delivered with the sealing system called SPIRAL®. Their lids are mounted permanently and cannot be removed. Inside each silencer, there is rock wool whose thickness is as follows:
 25 mm for SIL-GL-25 / SI-GL-25 according to the dimensions of the shell
 50 mm for SIL-GL-50 / SI-GL-50 – according to the dimensions of the shell
 100 mm for SIL-GL-100 / SI-GL-100 – according to the dimensions of the shell

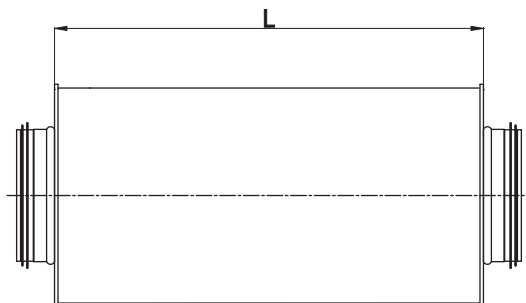
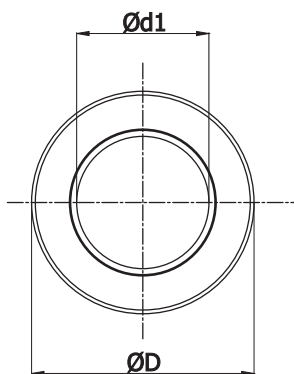
Product identification example

Product code: **SIL-GL- iii - aaa - bbb**

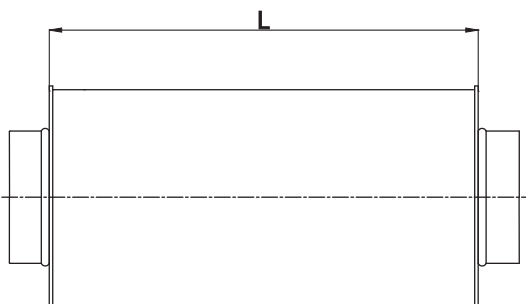
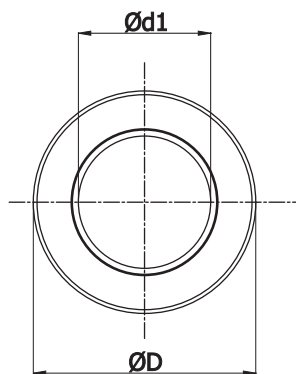
type _____
 insulation thickness _____
 $\varnothing d_1$ _____
 L _____

Dimensions

SIL-GL



SI-GL



Round ventilation acoustic silencers

SIL-GL/SI-GL

[Download Wentyle](#)
[Download AlnorCAM](#)
[Buy via B2B](#)

Dimensions

SIL-GL-50 / SI-GL-50 - 50 mm insulation thickness

description	Ød, nom [mm]	D nom [mm]	L [mm]	suppression [dB] for frequency [Hz]								weigh [kg]
				125	250	500	1000	2000	4000	8000		
SIL-GL	080-300	80	180	300	6	15	29	45	50	26	28	2
	080-500	80	180	500	9	18	32	48	53	29	31	3
	080-600	80	180	600	11	19	33	49	54	30	32	3
	080-900	80	180	900	13	22	36	52	57	33	35	5
	080-1000	80	180	1000	14	23	37	53	58	34	36	6
SIL-GL	100-300	100	200	300	5	13	26	41	44	22	24	2
	100-500	100	200	500	8	16	29	44	47	26	27	3
	100-600	100	200	600	9	17	30	45	49	27	29	3
	100-900	100	200	900	12	19	32	48	51	29	31	5
	100-1000	100	200	1000	13	21	34	49	52	30	32	6
SIL-GL	125-300	125	224	300	4	11	22	37	41	19	21	3
	125-500	125	224	500	7	14	26	40	44	22	24	4
	125-600	125	224	600	8	15	27	41	45	24	25	4
	125-900	125	224	900	11	18	29	44	47	26	28	7
	125-1000	125	224	1000	12	19	31	45	49	27	29	7
SIL-GL	160-300	160	250	300	3	9	20	33	35	16	18	3
	160-500	160	250	500	6	12	23	36	38	19	21	5
	160-600	160	250	600	7	14	24	37	39	21	22	6
	160-900	160	250	900	10	16	26	40	42	23	25	8
	160-1000	160	250	1000	11	17	28	41	43	24	26	8
SIL-GL	200-300	200	315	300	2	7	16	31	31	15	16	4
	200-500	200	315	500	5	10	19	34	34	18	19	6
	200-600	200	315	600	6	11	20	35	35	19	20	7
	200-900	200	315	900	8	13	23	38	38	22	23	10
	200-1000	200	315	1000	9	15	24	39	39	23	24	11
SIL-GL	250-500	250	355	500	4	9	18	29	27	15	16	9
	250-600	250	355	600	5	11	19	30	28	16	18	11
	250-900	250	355	900	8	13	22	33	31	19	20	14
	250-1000	250	355	1000	9	14	23	33	32	20	21	12
SIL-GL	315-500	315	400	500	4	7	14	23	21	13	14	11
	315-600	315	400	600	5	8	16	25	19	14	15	12
	315-900	315	400	900	7	11	18	28	21	17	18	16
	315-1000	315	400	1000	8	12	19	28	22	18	19	16

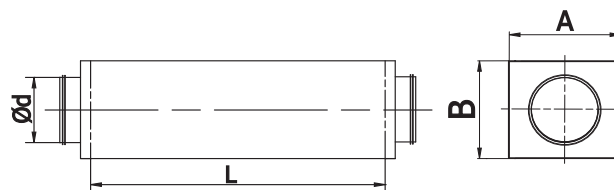
Acoustic silencers

SQLL-25

[Download Wentyle](#)
[Download AlnorCAM](#)
[Buy via B2B](#)



Dimensions



Description

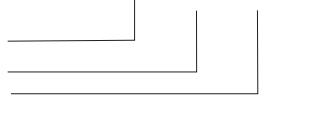
The SQLL acoustic silencers are made from a rectangular steel duct composing its external housing and an internal perforated insertion. The inside of the silencer is filled with mineral wool, 25 mm thick. As a standard the silencers are offered with the SPIRAL® system sealing. Silencers up to 400 diameter are produced with a 50 mm thickness slotted lever.

Example identification

Product code:

SQLL - 25 - aaa - bbb

type
insulation
Ød
L



description	pressure drop [Pa] for air velocity [m/s]				
	2	4	8	10	12
SQLL-25-100-600	0,10	0,38	1,54	2,40	3,46
SQLL-25-100-900	0,12	0,48	1,92	3,00	4,32
SQLL-25-100-1200	0,17	0,67	2,69	4,20	6,05
SQLL-25-125-600	0,08	0,32	1,28	2,00	2,88
SQLL-25-125-900	0,12	0,48	1,92	3,00	4,32
SQLL-25-125-1200	0,17	0,67	2,69	4,20	6,05
SQLL-25-160-600	0,07	0,28	1,12	1,75	2,51
SQLL-25-160-900	0,10	0,38	1,54	2,40	3,46
SQLL-25-160-1200	0,14	0,58	2,30	3,60	5,18
SQLL-25-200-600	0,05	0,22	0,88	1,37	1,98
SQLL-25-200-900	0,07	0,29	1,15	1,80	2,59
SQLL-25-200-1200	0,12	0,48	1,92	3,00	4,32
SQLL-25-250-600	0,03	0,13	0,51	0,80	1,15
SQLL-25-250-900	0,05	0,19	0,77	1,20	1,73
SQLL-25-250-1200	0,07	0,29	1,15	1,80	2,59
SQLL-25-315-600	0,02	0,10	0,38	0,60	0,86
SQLL-25-315-900	0,04	0,14	0,58	0,90	1,30
SQLL-25-315-1200	0,05	0,19	0,77	1,20	1,73
SQLL-25-400-900	0,86	3,46	13,82	21,60	31,10
SQLL-25-450-900	0,22	0,89	3,57	5,58	8,04
SQLL-25-500-900	1,13	4,51	18,05	28,20	40,61
SQLL-25-630-900	0,60	2,40	9,60	15,00	21,60
SQLL-25-400-1200	0,24	0,94	3,76	5,88	8,47
SQLL-25-450-1200	0,23	0,91	3,65	5,70	8,21
SQLL-25-500-1200	0,22	0,89	3,57	5,58	8,04
SQLL-25-630-1200	0,20	0,82	3,26	5,10	7,34

Acoustic silencers

SQLL-25

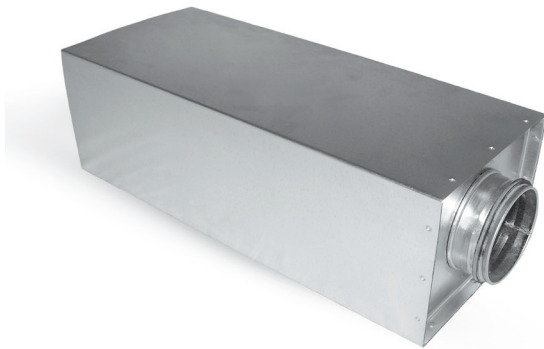
[Download Wentyle](#)
[Download AlnorCAM](#)
[Buy via B2B](#)

Ød, [mm]	A [mm]	B [mm]	L [mm]	attenuation [dB] for frequency [Hz]								weight [kg]
				125	250	500	1000	2000	4000	8000		
100	150	150	600	4	4	12	20	25	21	13	3,2	
100	150	150	900	7	6	18	31	37	32	19	4,6	
100	150	150	1200	9	8	24	41	49	43	25	5,9	
125	175	175	600	4	4	12	20	24	20	12	3,6	
125	175	175	900	6	6	18	30	35	31	18	5,1	
125	175	175	1200	8	8	24	40	47	41	24	6,6	
160	210	210	600	4	4	11	19	21	19	11	4,6	
160	210	210	900	6	6	17	28	32	28	17	6,4	
160	210	210	1200	8	7	23	38	43	37	22	8,2	
200	250	250	600	3	4	11	18	18	16	10	5,9	
200	250	250	900	5	5	16	26	28	24	15	8,3	
200	250	250	1200	7	7	21	35	37	32	19	10,7	
250	300	300	600	2	3	10	16	15	12	8	7,3	
250	300	300	900	4	5	14	23	23	18	11	10,0	
250	300	300	1200	5	6	19	31	31	24	15	12,7	
315	365	365	600	1	3	8	12	12	8	4	9,2	
315	365	365	900	2	5	12	18	18	12	6	10,8	
315	365	365	1200	2	6	16	24	24	16	8	12,4	
400	450	450	600	-	-	-	-	-	-	-	11,4	
400	450	450	900	10	15	25	35	31	24	22	15,5	
400	450	450	1200	12	17	29	43	39	27	25	19,5	
450	500	500	600	-	-	-	-	-	-	-	13,5	
450	500	500	900	10	13	23	33	30	23	21	19,5	
450	500	500	1200	11	16	27	41	37	35	24	22,5	
500	550	550	600	-	-	-	-	-	-	-	14,0	
500	550	550	900	9	13	23	32	28	22	20	19,8	
500	550	550	1200	10	16	27	40	35	25	23	24,7	
630	680	680	600	-	-	-	-	-	-	-	30,5	
630	680	680	900	7	10	19	28	22	19	16	37,5	
630	680	680	1200	9	13	23	36	30	21	19	46,5	

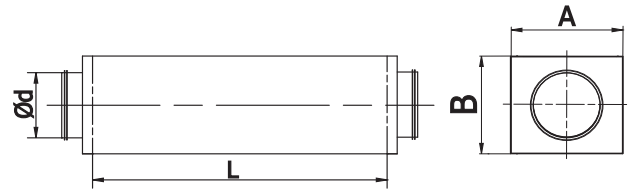
Acoustic silencers

SQLL-50

[Download Wentyle](#)
[Download AlnorCAM](#)
[Buy via B2B](#)



Dimensions



Description

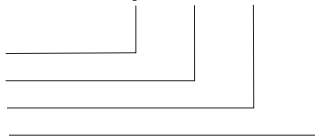
SQLL acoustic silencers are made of a square steel duct section which forms the external casing and a perforated insert. The center of the damper is filled with sound absorbing mineral wool, 50 mm thick. Silencers up to 400 diameter are produced with a 50 mm thickness slotted lever.

Example identification

Product code:

SQLL - 50 - aaa - bbb

type
 insulation
 Ød
 L



Ød nom [mm]	A [mm]	B [mm]	L [mm]	weight [kg]
100	210	160	300	1,95
100	210	160	500	2,55
100	210	160	600	2,95
100	210	160	900	4,15
100	210	160	1000	4,55
125	240	180	300	2,10
125	240	180	500	2,95
125	240	180	600	3,55
125	240	180	900	4,45
125	240	180	1000	5,15
160	270	220	300	2,42
160	270	220	500	3,70
160	270	220	600	4,2
160	270	220	900	5,80
160	270	220	1000	6,40
200	330	250	300	3,50
200	330	250	500	4,60
200	330	250	600	5,80
200	330	250	900	7,90
200	330	250	1000	8,90
250	380	310	300	3,80
250	380	310	500	5,40
250	380	310	600	6,30
250	380	310	900	8,80
250	380	310	1000	9,40
315	450	370	300	4,90
315	450	370	500	6,90
315	450	370	600	8,00
315	450	370	900	10,90
315	450	370	1000	13,50

Acoustic silencers

SQLL-50

[Download Wentyle](#)
[Download AlnorCAM](#)
[Buy via B2B](#)

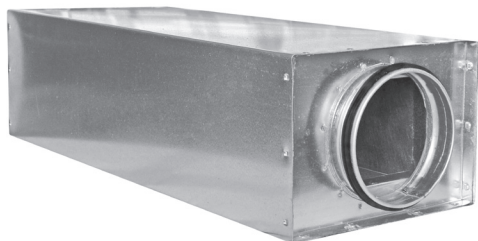
Description

$\varnothing d$ nom [mm]	A [mm]	B [mm]	L [mm]	weight [kg]
400	530	460	300	6,50
400	530	460	500	8,50
400	530	460	600	12,00
400	530	460	900	14,50
400	530	460	1000	15,00
450	580	510	300	9,50
450	580	510	500	11,00
450	580	510	600	15,50
450	580	510	900	18,00
450	580	510	1000	20,00
500	630	560	300	8,50
500	630	560	500	12,00
500	630	560	600	16,00
500	630	560	900	20,00
500	630	560	1000	23,00
630	760	690	300	16,00
630	760	690	500	17,50
630	760	690	600	19,50
630	760	690	900	26,00
630	760	690	1000	29,00

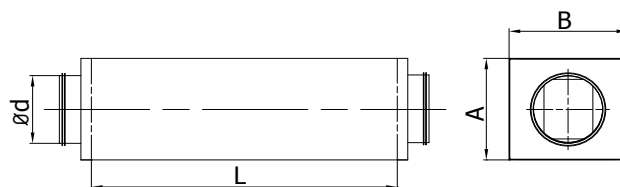
Acoustic silencers

SQQL-30

[Download Wentyle](#)
[Download AlnorCAM](#)
[Buy via B2B](#)



Dimensions



Description

SQQL-30 Acoustic silencers are made of a square steel duct section which forms the external casing. The center of the silencer is filled with sound absorbing mineral wool, 30 mm thick.

Example identification

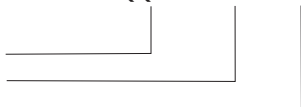
Product code:

SQQL-30 - aaa - bbb

type

A

B



$\varnothing d$ nom [mm]	A [mm]	B [mm]	L [mm]	weight [kg]
100	150	150	600	3,2
100	150	150	900	4,6
100	150	150	1200	5,9
125	175	175	600	3,6
125	175	175	900	5,1
125	175	175	1200	6,6
160	210	210	600	4,6
160	210	210	900	6,4
160	210	210	1200	8,2
200	250	250	600	5,9
200	250	250	900	8,3
200	250	250	1200	10,7
250	300	300	600	7,3
250	300	300	900	10,0
250	300	300	1200	12,7
315	365	365	600	9,2
315	365	365	900	10,8
315	365	365	1200	12,4
400	450	450	600	11,4
400	450	450	900	15,5
400	450	450	1200	19,5
450	500	500	600	13,5
450	500	500	900	19,5
450	500	500	1200	22,5
500	550	550	600	14,0
500	550	550	900	19,8
500	550	550	1200	24,7
630	680	680	600	30,5
630	680	680	900	46,5
630	680	680	1200	37,5

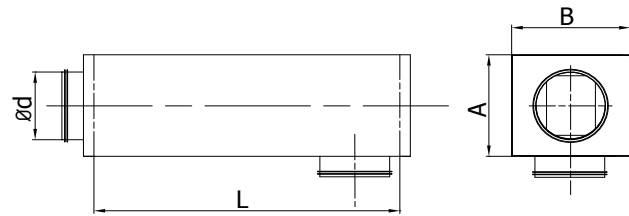
Acoustic silencers

SQQL-B-30

[Download Wentyle](#)
[Download AlnorCAM](#)
[Buy via B2B](#)



Dimensions



Description

SQQL-B-30 silencers are made of a square steel duct section which forms the external casing. SQQL-B-30 silencers have one side connection on one of the walls. The center of the silencer is filled with sound absorbing mineral wool, 30 mm thick.

Example identification

Product code: **SQQL-B-30 - aaa - bbb**

type
A
B



$\varnothing d$ nom [mm]	A [mm]	B [mm]	L [mm]	weight [kg]
100	150	150	600	3,2
100	150	150	900	4,6
100	150	150	1200	5,9
125	175	175	600	3,6
125	175	175	900	5,1
125	175	175	1200	6,6
160	210	210	600	4,6
160	210	210	900	6,4
160	210	210	1200	8,2
200	250	250	600	5,9
200	250	250	900	8,3
200	250	250	1200	10,7
250	300	300	600	7,3
250	300	300	900	10,0
250	300	300	1200	12,7
315	365	365	600	9,2
315	365	365	900	10,8
315	365	365	1200	12,4
400	450	450	600	11,4
400	450	450	900	15,5
400	450	450	1200	19,5
450	500	500	600	13,5
450	500	500	900	19,5
450	500	500	1200	22,5
500	550	550	600	14,0
500	550	550	900	19,8
500	550	550	1200	24,7
630	680	680	600	30,5
630	680	680	900	46,5
630	680	680	1200	37,5

Attenuating bends

BSIL

[Download Wentyle](#)
[Download AlnorCAM](#)
[Buy via B2B](#)

**Description**

BSIL attenuating bends are designed for ventilation systems where straight silencers, such as SIL, cannot be used due to restricted space or other requirements.

The silencer consists of two combined bends. The inner bend is made of perforated sheet metal. The space between the outer coating and the perforated tube is filled with sound-absorbing material. The perforated tube is insulated with fabric to prevent the sound-absorbing material from being sucked into the duct.

The standard silencers measuring $\varnothing 315$ mm in diameter are supplied with SPIRAL®system couplings. From diameter $\varnothing 355$ mm the silencers are supplied with two SPIRAL®system (NSL) couplings.

BSIL silencers with a 50mm thick insulation are available in the following diameters:

$\varnothing 125 - 160 - 200 - 250 - 315$.

The silencers with a 100mm thick insulation are available in the following diameters:

$\varnothing 125 - 160 - 200 - 250 - 315 - 400 - 500 - 630$.

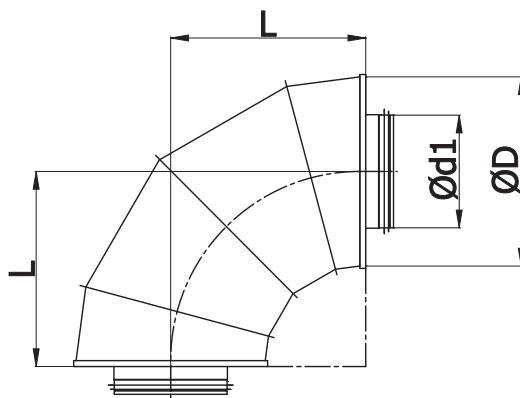
Silencers are made entirely of galvanised sheet metal. The attenuation level is measured in accordance with GLSM guidelines.

Patented.

Example identification

Product code: **BSIL - aa - bbb**

type _____
 insulation 50/100 _____
 $\varnothing d_1$ _____

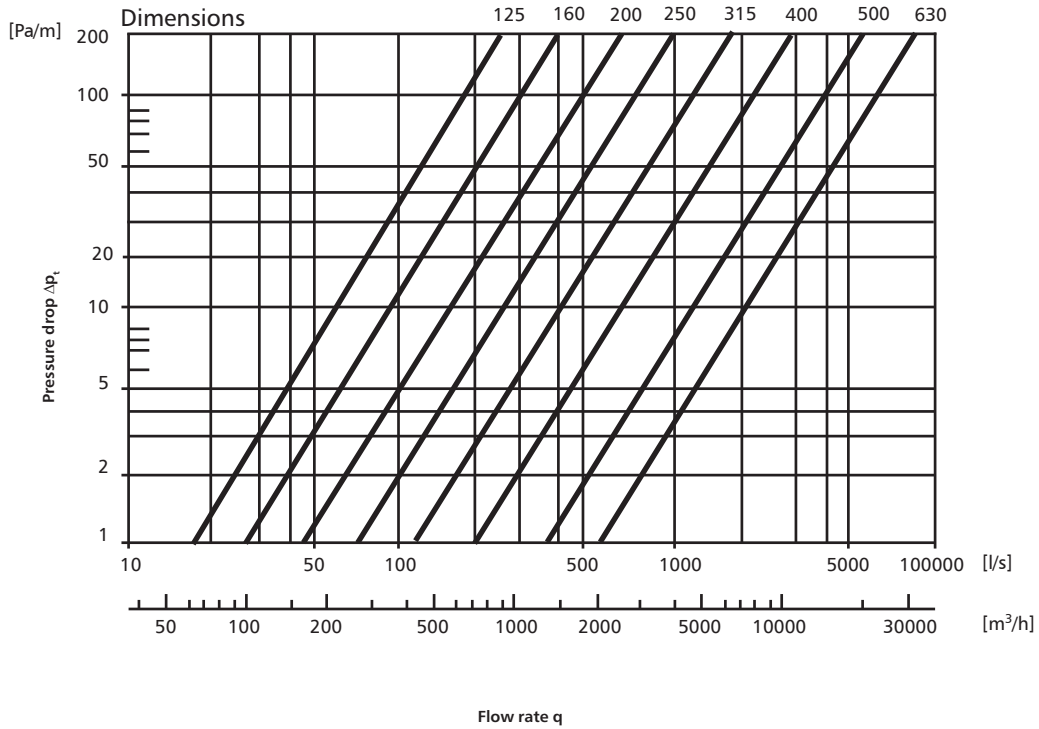
Dimensions**BSIL-50 - 50 mm thickness insulation**

$\varnothing d_1$ rated [mm]	L [mm]	D rated [mm]	attenuation [dB] for frequency [Hz]								weight [kg]
			125	250	500	1000	2000	4000	8000		
125	200	224	2	6	14	29	30	31	24	4	
160	240	260	3	6	14	26	34	30	25	6	
200	305	315	3	8	20	26	32	30	25	10	
250	370	355	2	6	17	29	28	24	22	11	
315	370	450	3	7	13	15	15	14	12	18	

BSIL-100 - 100 mm thickness insulation

$\varnothing d_1$ rated [mm]	L [mm]	D rated [mm]	attenuation [dB] for frequency [Hz]								weight [kg]
			125	250	500	1000	2000	4000	8000		
125	260	315	6	13	22	25	35	39	33	9	
160	280	355	7	14	18	26	38	33	25	11	
200	325	400	6	15	22	29	34	32	27	15	
250	370	450	4	11	16	27	28	26	22	20	
315	375	500	4	11	15	18	17	15	14	21	
400	420	600	5	9	14	14	15	14	12	30	
500	485	710	5	13	19	14	13	12	10	42	
630	610	800	6	14	17	13	12	12	11	62	

Technical Data



Flexible silencers

SLEFL

[Download Wentyle](#)
[Download AlnorCAM](#)
[Buy via B2B](#)



Description

The SLEFL acoustic silencer is made of the Alnor Flex perforated duct. Applied insulation is 25 mm thick and is shielded with the ALUDUCT AD-L housing reinforced with spirally coiled steel wire. The silencer connection is made by means of metal flanges acting as a nipple. They are available in two length versions: 600 and 1200 mm. Optionally other lengths of the silencer are available as well as application of muff connections.

Range of temperature: -20°C up to + 140°C
Thermal insulation of mineral wool: Lambda = 0,034 W/m x k in 24°C

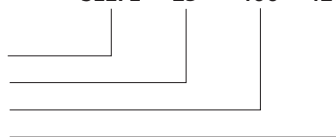
Pressure loss:
 According to enclosed diagram

Fire resistance:
 The silencers are made of non-flammable materials.

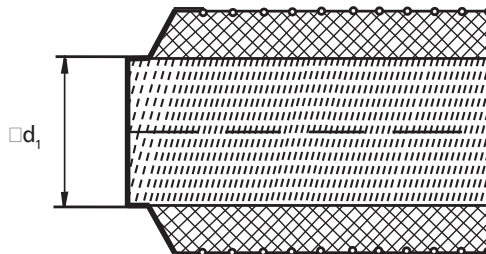
Example identification

Product code: SLEFL- 25 - 100 - 1200

type
 insulation
 diameter
 length



Dimensions



Ød, nom [mm]	L [mm]	Noise suppression [dB] for frequency [Hz]							
		125	250	500	1000	2000	4000	8000	
80	600	4	8	16	27	34	35	19	
100	600	4	8	14	23	27	25	14	
125	600	2	7	14	21	26	20	12	
160	600	2	5	12	17	24	17	11	
200	600	1	4	10	16	20	14	11	
250	600	1	4	8	14	16	12	10	
315	600	1	3	6	12	13	10	10	

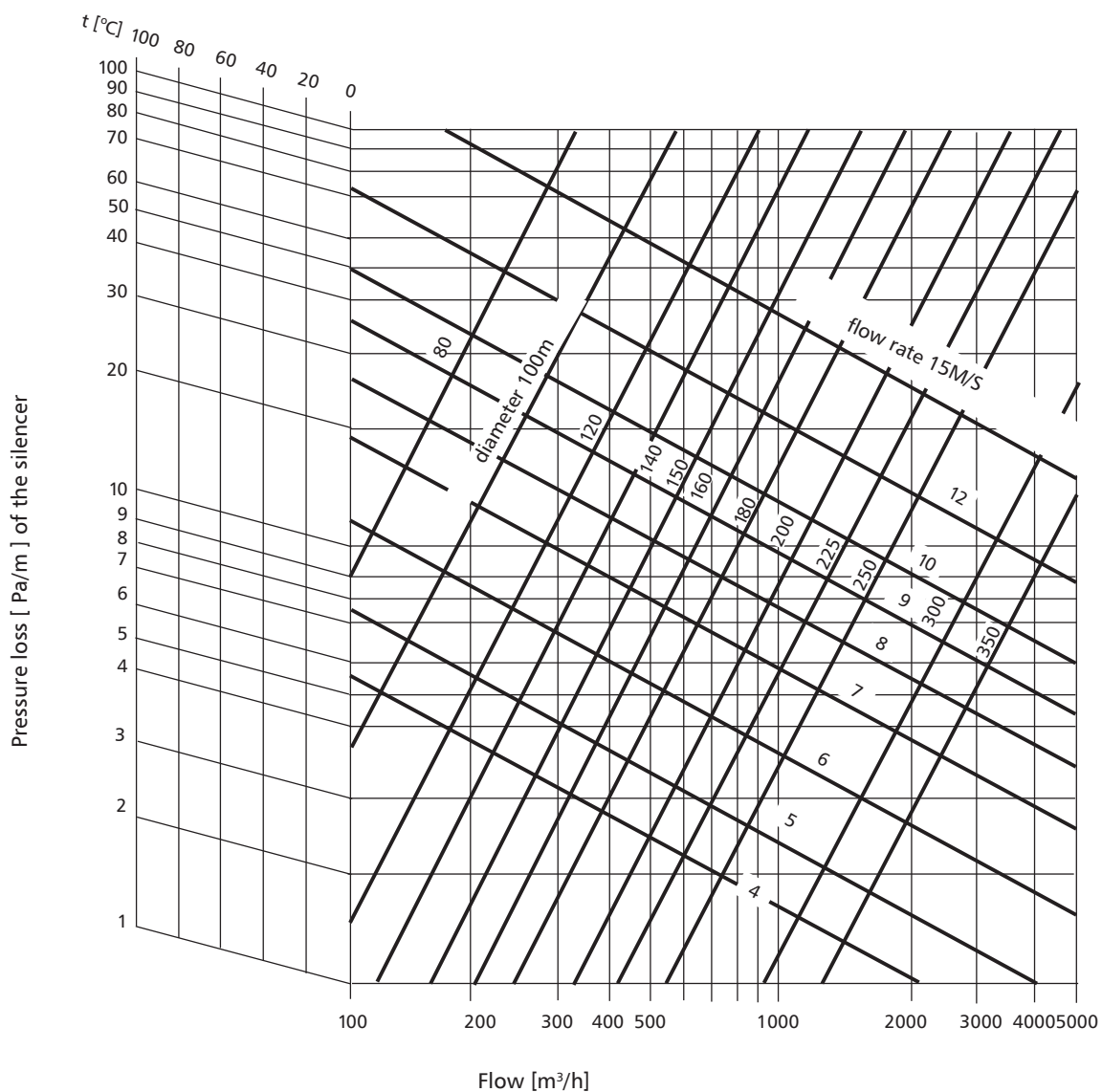
Ød, nom [mm]	L [mm]	Noise suppression [dB] for frequency [Hz]							
		125	250	500	1000	2000	4000	8000	
80	1200	9	16	28	46	53	46	25	
100	1200	8	13	25	40	50	40	21	
125	1200	7	12	23	39	47	32	18	
160	1200	4	8	21	37	40	22	14	
200	1200	4	8	20	31	32	20	14	
250	1200	2	6	15	27	25	15	13	
315	1200	2	6	12	17	14	11	10	

Flexible silencers **SLEFL**

[Download Wentyle](#)
[Download AlnorCAM](#)
[Buy via B2B](#)

Technical Data

Pressure loss of the SLEFL flexible silencers



Pressure loss of silencers made of metal pipes.

Silencer length = 1,0 m

1 Pa = 0,01 mbar = ca. 0,1 mm WG

Flexible silencers SLEAL

[Download Wentyle](#)
[Download AlnorCAM](#)
[Buy via B2B](#)



Description

The SLEAL acoustic silencer is made of the ALUDUCT perforated duct. Applied insulation is 25 mm thick and is shielded with the ALUDUCT AD-L 45 microns thick housing reinforced with steel wire. The silencer connection is made by means of metal flanges acting as a nipple. They are available in two length versions: 500 and 1000 mm.

Optionally other lengths of the silencer are available as well as application of muff connections.

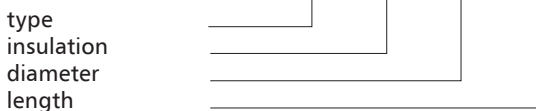
Range of temperature: -20°C up to +140°C

Thermal insulation of mineral wool:
Lambda = 0,034 W/m x k in 24°C

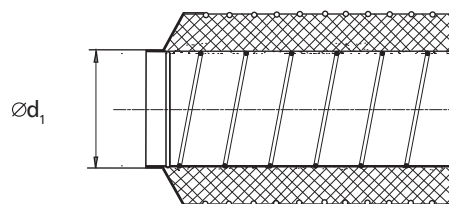
Acoustic insulation:
according to enclosed diagram

Fire resistance:
The silencers are made of non-flammable materials.

Example identification
Product code: SLEAL- 25 - 100 - 1000



Dimensions



$\varnothing d_1$ nom [mm]	L [mm]
80	500, 1000
100	500, 1000
125	500, 1000
160	500, 1000
200	500, 1000
250	500, 1000
315	500, 1000

Technical Data

Diagram 1: Noise suppression
Thickness of acoustic insulation – 25 mm
Length of the duct – 1000 mm

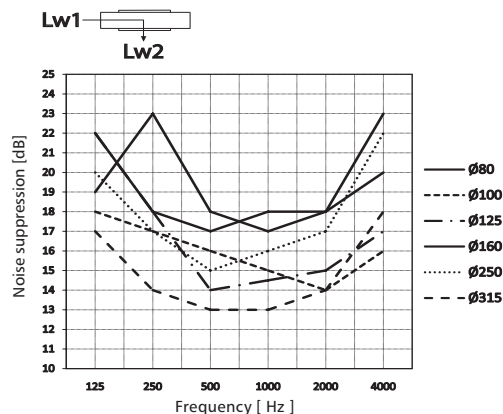
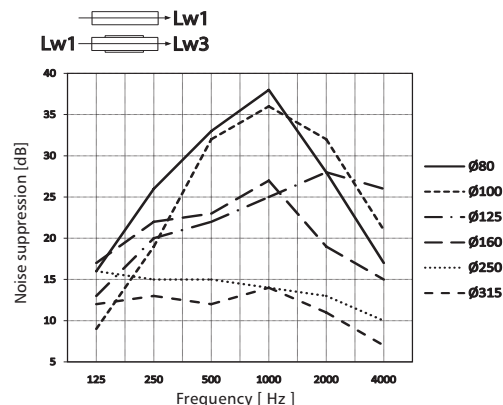


Diagram 2: Noise suppression
Thickness of acoustic insulation – 25 mm
Length of the duct – 1000 mm



Technical Data

Pressure loss of the SLEAL flexible silencers

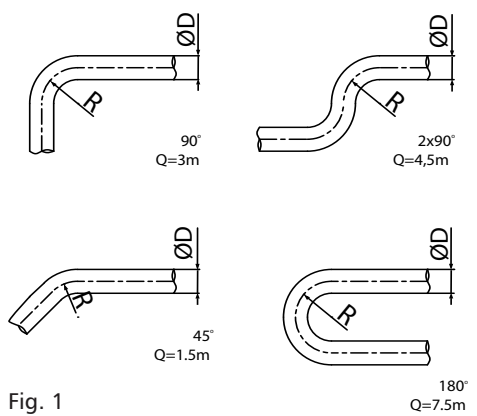
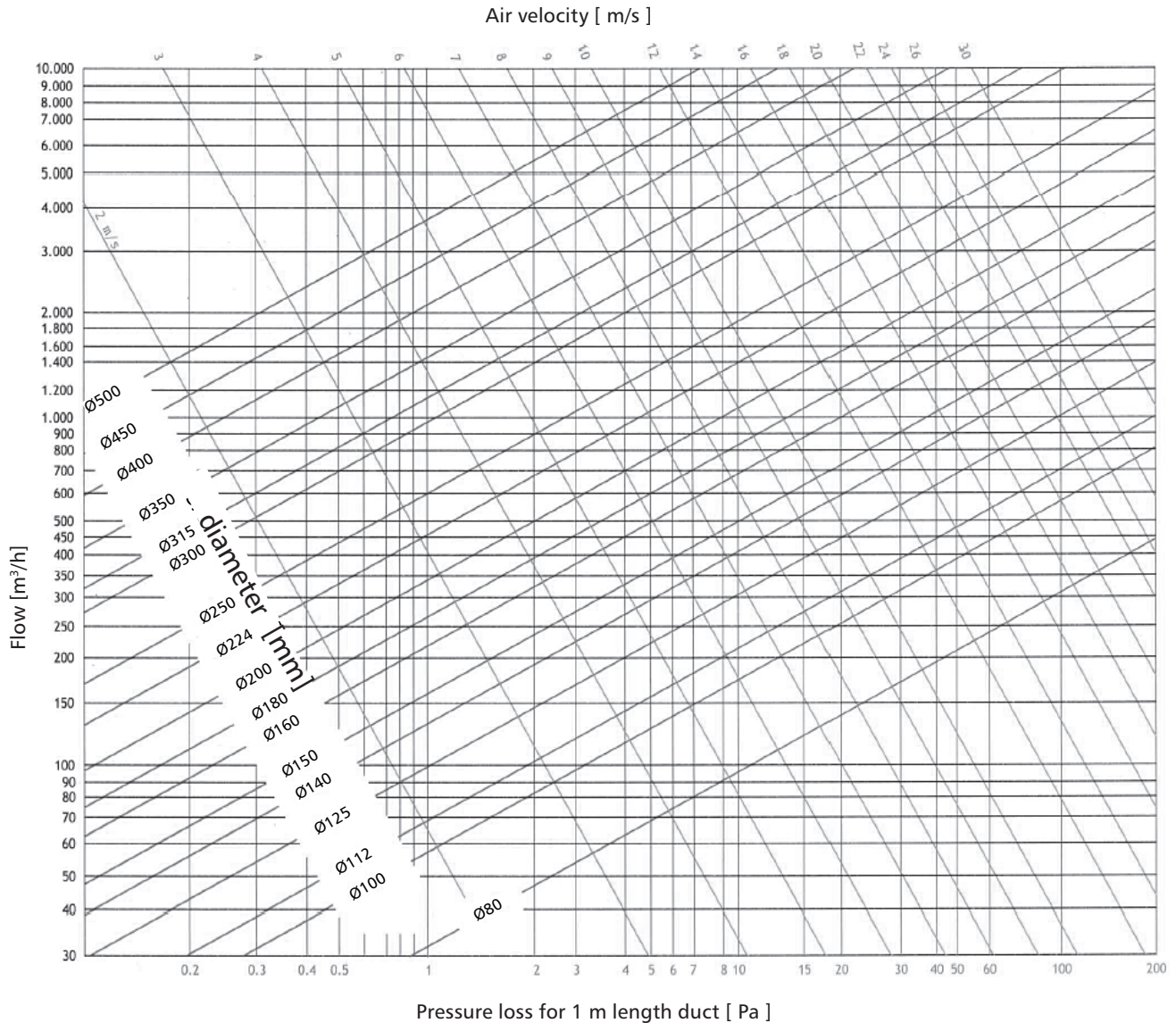


Fig. 1

Example:

$Z = Q \times (D/300)$ Z - equivalent length of the duct [m]
Q - length [m] (Rysunek 1)
D - duct diameter [mm]

Data:
Air velocity = 5m/s
Air velocity = 200mm
Elbow 90°
Duct length = 1m

Searched:
Pressure loss = ?

Calculation:
Pressure loss for 1 m length = 3 Pa (Diagram 1)
Q=3m (Figure 1)
 $Z = 3 \times (200/300) = 1.99m$
Pressure loss = $(1.99 + 1) \times 3 \text{ Pa/m} = 8.97Pa$

Temperature	-20°C	-0°C	+20°C	+40°C	+60°C	+80°C	+100°C
Correction factor	1.158	1.073	1.000	0.936	0.880	0.830	0.785

Flexible silencers SLESD

[Download Wentyle](#)
[Download AlnorCAM](#)
[Buy via B2B](#)



Description

The SLESD acoustic silencer is made of the ALUDUCT AD-3 perforated insertion. Applied insulation is 25 mm thick and is covered with a casing made of aluminium and polyester. The silencer connection is made by means of metal flanges acting as a nipple. They are available in three length versions: 500, 1000 and 1500.

Optionally other lengths of the silencer are available as well as application of muff connections.

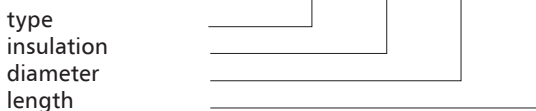
Range of temperature: -20°C up to +140°C

Thermal insulation of mineral wool:
Lambda = 0,034 W/m x k in 24°C

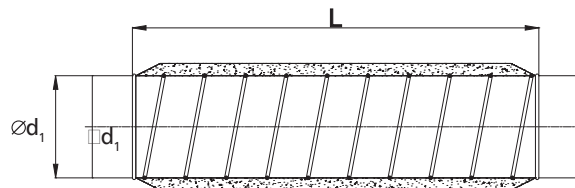
Acoustic insulation:
according to enclosed diagram

Fire resistance:
The silencers are made of non-flammable materials.

Example identification
Product code: SLESD- 25 - 100 - 1000



Dimensions



Ød ₁ nom [mm]	L [mm]
80	500, 1000
100	500, 1000
125	500, 1000
160	500, 1000
200	500, 1000
250	500, 1000
315	500, 1000

Technical Data

Diagram 1: Noise suppression
Thickness of acoustic insulation – 25 mm
Length of the duct – 1000 mm

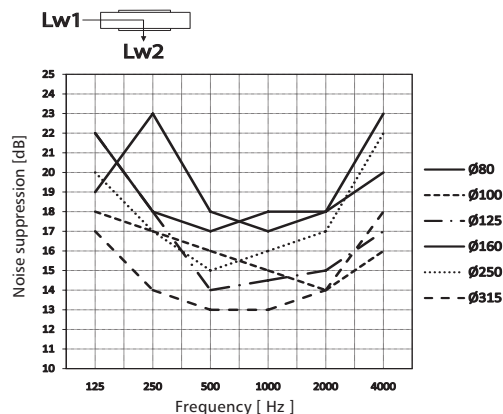
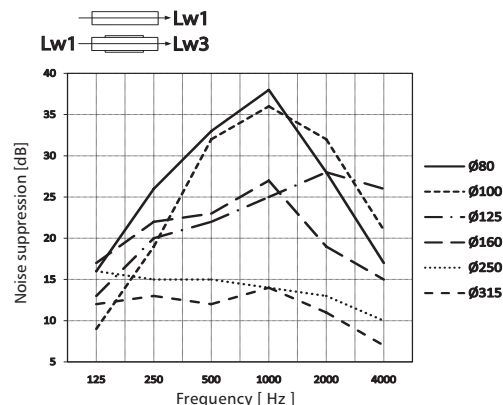


Diagram 2: Noise suppression
Thickness of acoustic insulation – 25 mm
Length of the duct – 1000 mm



Technical Data

Pressure loss of the SLESD flexible silencers

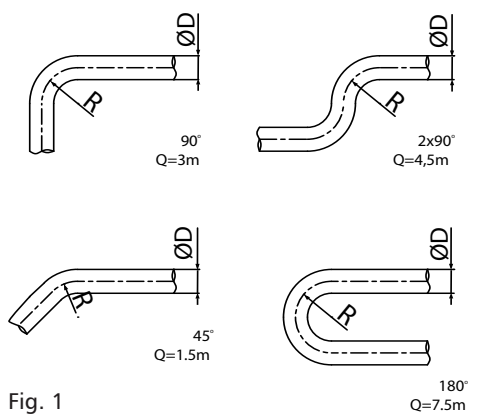
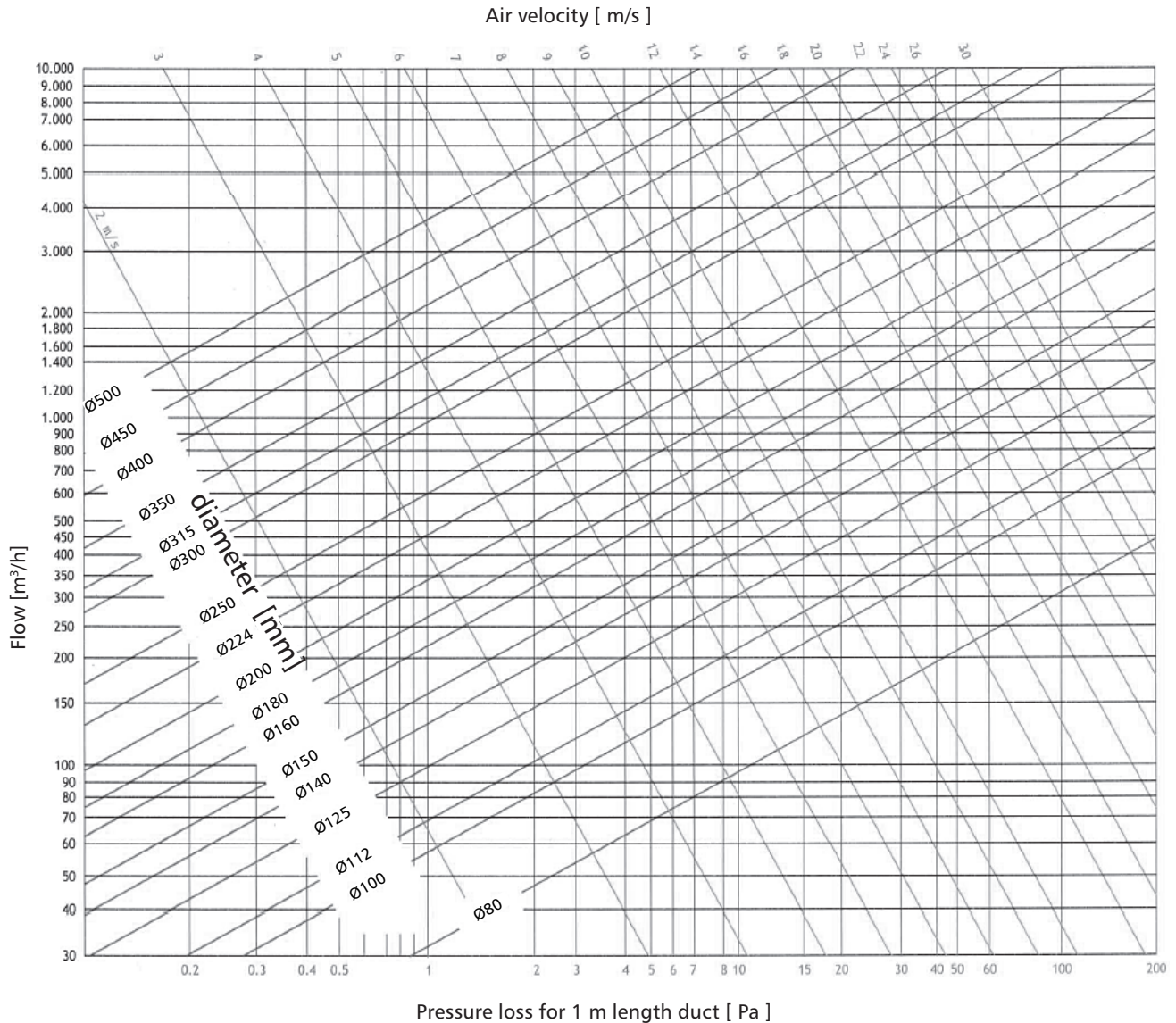


Fig. 1

Example:

$Z = Q \times (D/300)$ Z - equivalent length of the duct [m]
Q - length [m] (Rysunek 1)
D - duct diameter [mm]

Data:
Air velocity = 5m/s
Air velocity = 200mm
Elbow 90°
Duct length = 1m

Searched:
Pressure loss = ?

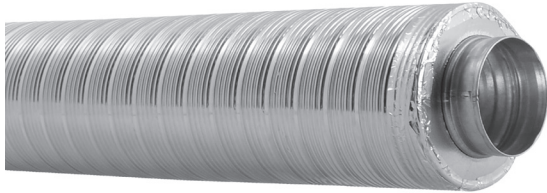
Calculation:
Pressure loss for 1 m length = 3 Pa (Diagram 1)
Q=3m (Figure 1)
 $Z = 3 \times (200/300) = 1.99m$
Pressure loss = $(1.99 + 1) \times 3 \text{ Pa/m} = 8.97Pa$

Temperature	-20°C	-0°C	+20°C	+40°C	+60°C	+80°C	+100°C
Correction factor	1.158	1.073	1.000	0.936	0.880	0.830	0.785

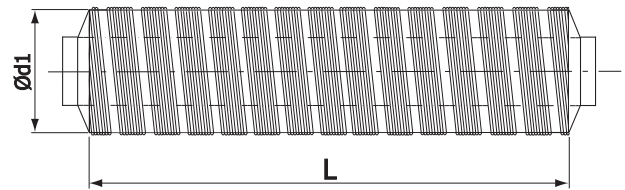
Flexible silencers

SLEAF

[Download Wentyle](#)
[Download AlnorCAM](#)
[Buy via B2B](#)



Dimensions



Description

SLEAF flexible acoustic silencer is made of two AF-AL duct sections. Thickness of used insulation layer is 50 mm. On both ends of the damper, nipple duct reducers are used. SLEAF dampers are available in two lengths: 500 mm and 1000 mm.

It is possible to order dampers with: EPDM rubber washers, with flange couplings of various length.

Temperature range: From - 20°C to + 140°C

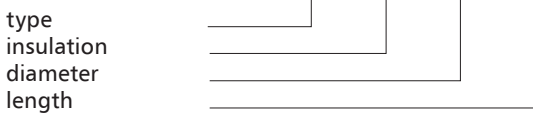
Thermal mineral wool insulation:
 Lambda = 0,034 W/m x k at 24°C

Acoustic insulation:
 As per the attached diagram.

Fire retardancy:
 Dampers are made of inflammable materials.

Example identification

Product code: **SLEAF - 25 - 100 - 1000**

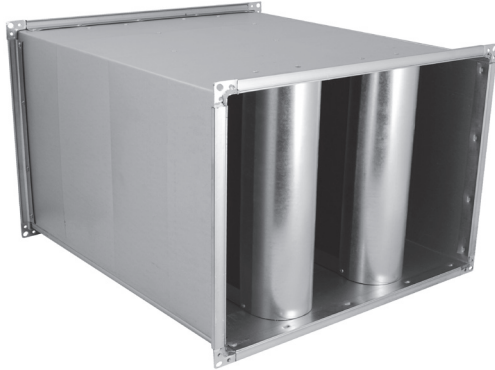


$\varnothing d$ nom [mm]	A [mm]
100	500
100	1000
125	500
125	1000
160	500
160	1000
200	500
200	1000
250	500
250	1000
315	500
315	1000
355	500
355	1000

Noise silencer

SLC/SRC

[Download Wentyle](#)
[Download AlnorCAM](#)
[Buy via B2B](#)



Description

Rectangular duct silencers are intended for noise attenuation in ventilation and air-conditioning systems. Most often they are placed between a fan and a supply or exhaust air duct, and before air diffusers. The silencer is made of a housing with baffles inside. The housing is made of galvanised sheet metal, has mounting frames with sheet metal joining profiles on its ends, and is stiffened with transverse sheet corrugation. The baffles consist of a galvanised sheet metal frame and a sound-absorbing insert. The sound-absorbing insert is a combination of non-combustible mineral wool panels, and its external surface is covered with a special abrasion resistant fabric, which protects mineral wool.

ROCKWOOL panels covered with a black glass fibre veil, with coating that can support air flow rates of 2m/s, as well as industrial ROCKWOOL panels are used.

The maximum temperature of heat carrier is 250°C. The product is non-combustible.

For greater dimensions a or b, the baffles are supplied in combined form.

Depending on their design, there are two types of the baffles: A – absorptive baffles with all their surface covered with fabric. This type of baffles is used predominantly for low and medium frequencies.

B – absorptive/resonator baffles, which are similar to the absorptive baffles, but the sound-absorbing insert on both sides of the baffle is screened across half the baffle surface with galvanised sheet metal

These baffles are used mainly for medium and high frequencies. Distance s between the baffles is 40-100mm. Care should be taken when handling, storing and assembling silencers on site so as not to damage the surface of baffles. Rectangular silencers are placed in ventilation systems with vertical baffles. The allowable flow rate should be taken into account when selecting the type of silencer, depending on stream flow and the silencer's own noise.

Example identification

Product code:	SLC	100	4	0800	0400	0500
Baffle type L						
Baffle type R						
Material						
Baffle thickness 100						
Baffle thickness 200						
Number of baffles						
n						
a						
b						
L						

Example identification

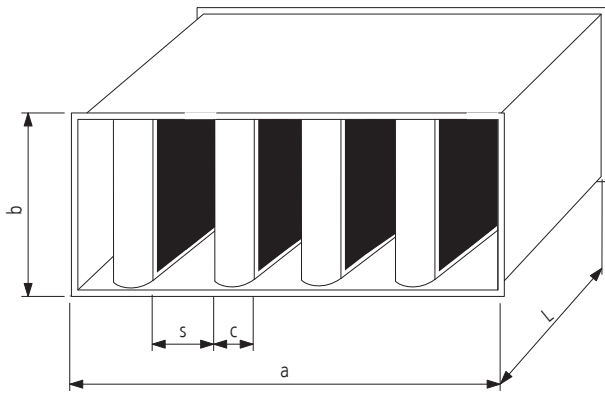
Silencer with a 100mm thick type A baffle, number of baffles 4

SLC-100-4-0800-0400-0500

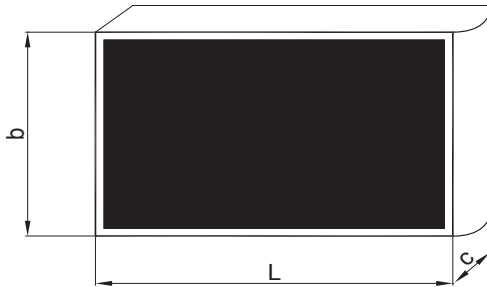
Noise silencer **SLC/SRC**

[Download Wentyle](#)
[Download AlnorCAM](#)
[Buy via B2B](#)

Dimensions



Baffle type L
 $c = 100 \text{ lub } 200$



Baffle type R
 $c = 100 \text{ lub } 200$

