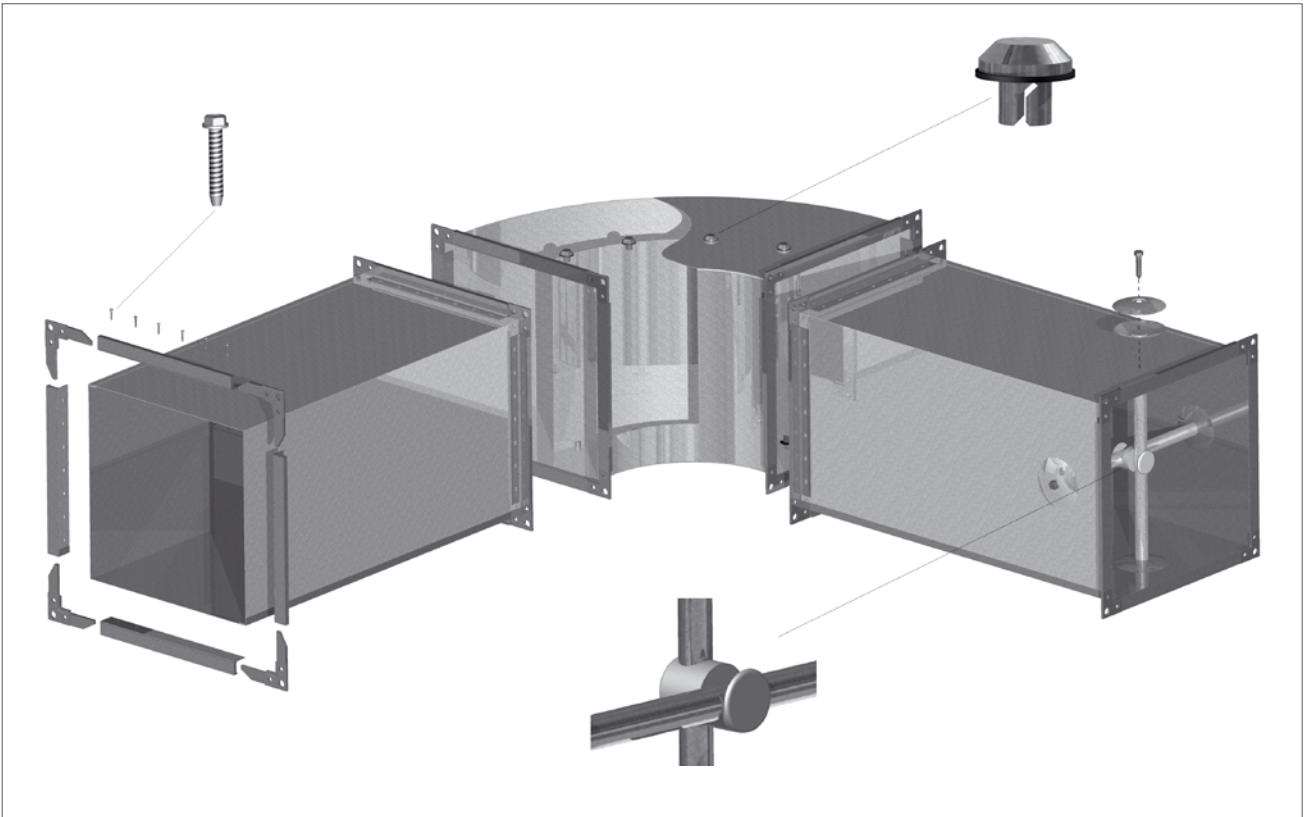


# **Prefabricated Ducts**

Producent zastrzega sobie prawo do dokonywania zmian w wymiarach i danych technicznych produktów ze względu na ciągłe ich doskonalenie

# About the System

[Download Wentyle](#)  
[Download AlnorCAM](#)  
[Buy via B2B](#)



## About the System

The prefabricated components help install and modify ventilation ducts. They are all compliant with applicable industry standards that are followed by most manufacturers.

## Dimensions

All the values are based on the tables and information provided in a product's catalogue datasheet.

## Installation Guide

Depending on the system and the type of components, it may become necessary to use advanced sheet metal processing machines.

## Benefits of Use

Since the components complement each other, they can be quickly assembled on site. It is significant then that the time needed to fabricate or modify ventilation ducts can be extended and all sizes be available.

## Labelling

ALNOR products are furnished with the construction industry's B sign and product codes according to their technical specifications contained in this catalogue.



# Side Corners for Rectangular Ducts

# NQ

[Download Wentyle](#)

[Download AlnorCAM](#)

[Buy via B2B](#)



## Description

NQ galvanised side corners are used to join PQ20, 30 and 40 channels and thus create an end cover for connecting two rectangular ducts.

The side corners can be made of acid-proof material or aluminium.

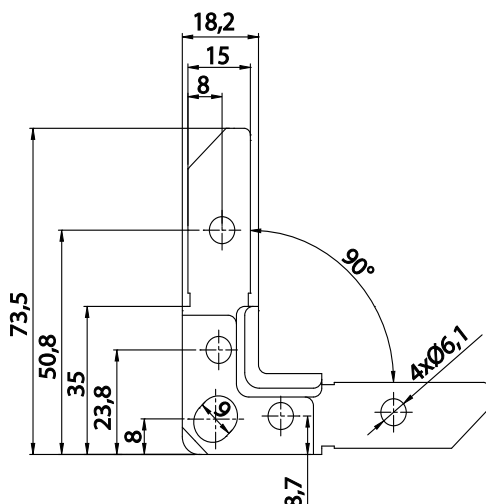
### Example identification

Product code: **NQ-20-C**

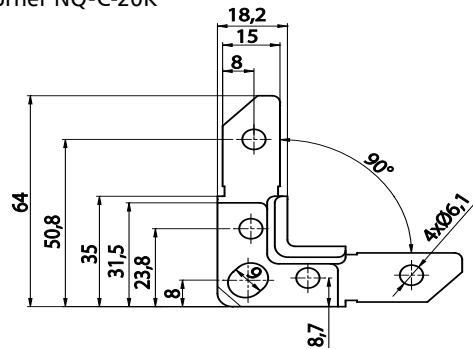
type \_\_\_\_\_  
material \_\_\_\_\_

## Dimensions

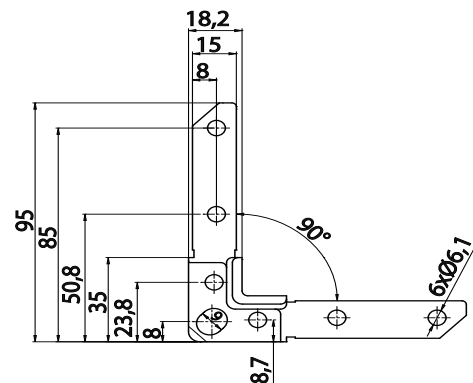
Side Corner NQ-C-20



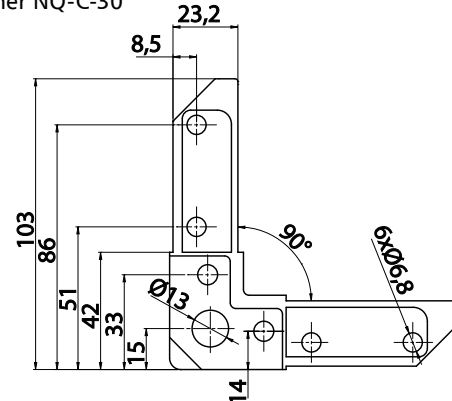
Side Corner NQ-C-20K



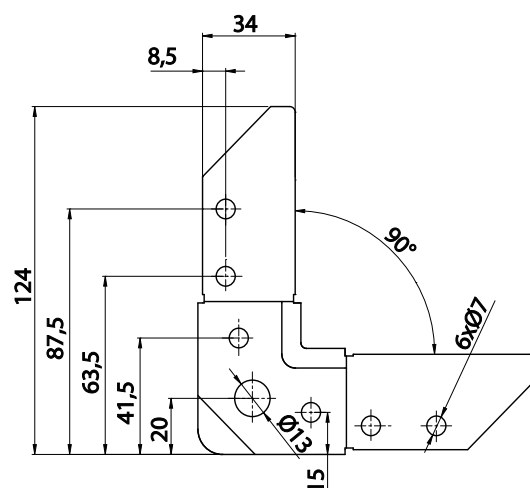
Side Corner NQ-C-20L



Side Corner NQ-C-30



Side Corner NQ-C-40



# Side Corners for Rectangular Ducts

## NQ-SH

[Download Wentyle](#)  
[Download AlnorCAM](#)  
[Buy via B2B](#)



### Description

NQ-SH galvanized duct corners are used to connect frame profiles with similar dimensions, to create a connecting frame for two square ducts.

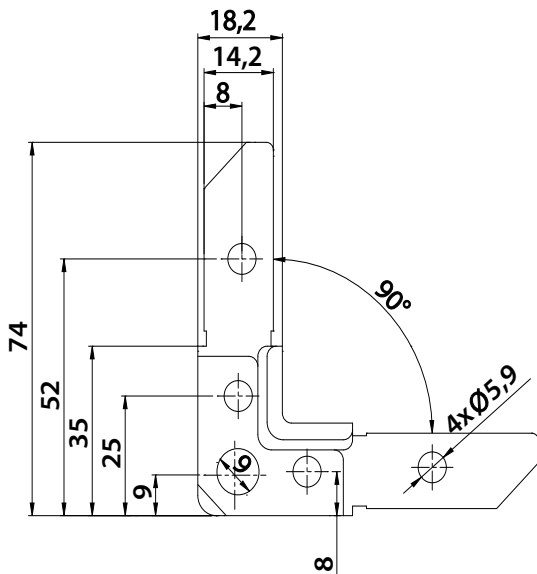
#### Example identification

Product code: **NQ-20-SH**

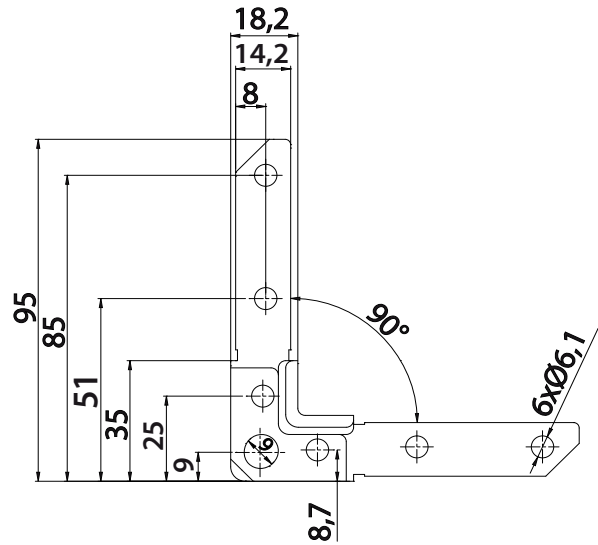
type \_\_\_\_\_

### Dimensions

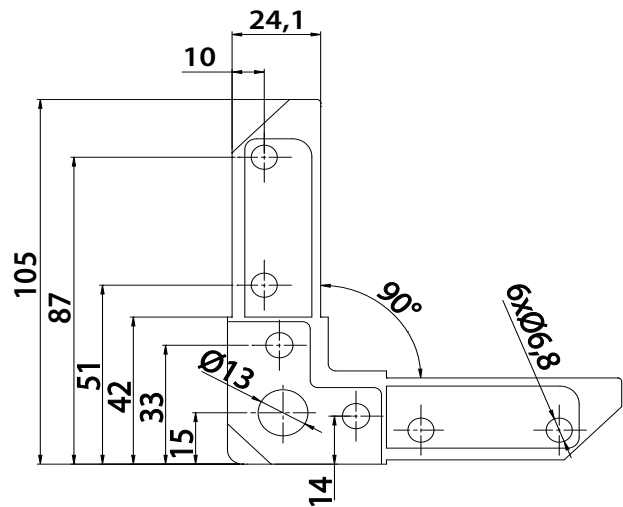
Side Corner NQ-20-SH



Side Corner NQ-20L-SH



Side Corner NQ-30-SH



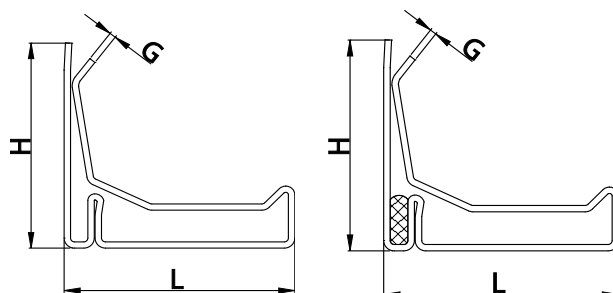
# Rectangular duct profile

# PQ

[Download Wentyle](#)  
[Download AlnorCAM](#)  
[Buy via B2B](#)



## Dimensions



Profil PQ

Profil PQ-SIL z uszczelnieniem

## Description

The PQ profile is made of galvanized steel sheet and is used for connecting rectangular ventilation ducts. It is mounted directly on the end of a duct and a fitting.

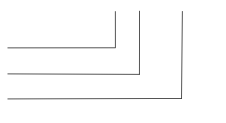
Depending on dimensions of a duct and air pressure inside a duct three dimensions of the profile may be used. The aluminium and acid-resistant steel profiles are always produced with a sealing specially designed for ventilation ducts. A range of working temperatures for a sealing is -30°C up to +100°C. Maximal momentary temperature to which the sealing may be subjected is +200°C. The sealing material is resistant to ageing, has a good adherence to a base, good mechanical stability and makes a good anti-corrosive protection.

**Packing:** 5 m long sections packed in 500 meters bundles, and 3 m long sections packed in 300 meters.

### Example identification

Product code: **PQ-C-20-ECO-SIL**

material  
 dimension  
 version  
 sealing



pressure [Pa]	dimension of „a” or „b”				
	< 500 [mm]	500-1000 [mm]	1001-1600 [mm]	1601-2500 [mm]	2501 [mm]
200	PQ 20	PQ 20	PQ 30	PQ 30	PQ 40
400	PQ 20	PQ 20	PQ 30	PQ 30	PQ 40
600	PQ 20	PQ 20	PQ 30	PQ 30	PQ 40
800	PQ 20	PQ 20	PQ 30	PQ 30	PQ 40
1000	PQ 20	PQ 20	PQ 30	PQ 30	PQ 40
1200	PQ 20	PQ 30	PQ 30	PQ 40	PQ 40
1500	PQ 20	PQ 30	PQ 30	PQ 40	PQ 40

type	height H [mm]	widht L [mm]	thickness G [mm]
PQ-C-20	25	20	0,7
PQ-C-30	25	30	0,8
PQ-C-40	30	40	0,9
PQ-C-20-ECO	25	20	0,6
PQ-C-30-ECO	25	30	0,7
PQ-C-40-ECO	30	40	0,8
PQ-C-20-SIL	25	20	0,7
PQ-C-30-SIL	25	30	0,8
PQ-C-40-SIL	30	40	0,9
PQ-C-20-ECO-SIL	25	20	0,6
PQ-C-30-ECO-SIL	25	30	0,7
PQ-C-40-ECO-SIL	30	40	0,8
PQ-K-20-SIL*	25	20	0,6
PQ-K-30-SIL*	25	30	0,6
PQ-K-40-SIL*	30	40	0,7

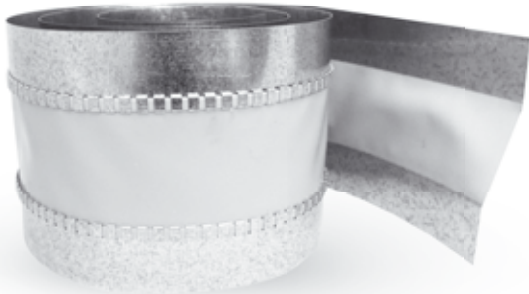
\* delivery in 1.4301 brand according to the EN 10088 standard

PQ-A-20-SIL**	25	20	0,7
PQ-A-30-SIL**	25	30	0,8
PQ-A-40-SIL**	30	40	0,9

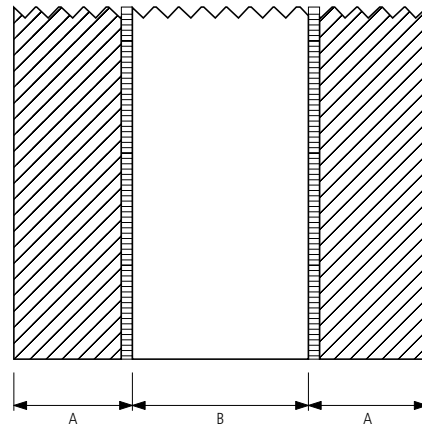
\*\* delivery in 1050A brand according to the PN-EN 573-3 standard

# Balancing Tape AMT

[Download Wentyle](#)  
[Download AlnorCAM](#)  
[Buy via B2B](#)



## Dimensions



## Description

The AMT balancing tape is used to fabricate round or rectangular dampers. They are intended to prevent vibration and noise transmission across ductwork. Most often they are installed in equipment that causes strongest vibrations and noise.

### Example identification

Product code: **AMT-35-60**

type \_\_\_\_\_

### Galvanisation – type of metal, PVC – type of fabric

type	fabric width A [mm]	fabric width B [mm]	temperature resistance [°C]
AMT-35-60-35	35	60	-30/+80
AMT-45-60-45	45	60	-30/+80
AMT-45-75-45	45	75	-30/+80
AMT-70-100-70	70	100	-30/+80

### Stainless steel - type of metal, PVC – type of fabric

type	fabric width A [mm]	fabric width B [mm]	temperature resistance [°C]
AMT-KWS-35-60-35	35	60	-30/+80
AMT-KWS-45-60-45	45	60	-30/+80
AMT-KWS-45-75-45	45	75	-30/+80
AMT-KWS-70-100-70	70	100	-30/+80

### Galvanisation – type of metal, silicone – type of fabric

type	fabric width A [mm]	fabric width B [mm]	temperature resistance [°C]
AMT-HI-T-35-60-35	35	60	-50/+260
AMT-HI-T-45-60-45	45	60	-50/+260
AMT-HI-T-45-75-45	45	75	-50/+260
AMT-HI-T-70-100-70	70	100	-50/+260

### Galvanisation - type of metal, poliuretán - type of fabric

type	fabric width A [mm]	fabric width B [mm]	temperature resistance [°C]
AMT-PU-35-60-35	35	60	-30/+200*
AMT-PU-45-60-45	45	60	-30/+200*
AMT-PU-45-75-45	45	75	-30/+200*
AMT-PU-70-100-70	70	100	-30/+200*

### Stainless steel - type of metal, poliuretán - type of fabric

type	fabric width A [mm]	fabric width B [mm]	temperature resistance [°C]
AMT-K-PU-35-60-35	35	60	-30/+200*
AMT-K-PU-45-60-45	45	60	-30/+200*
AMT-K-PU-45-75-45	45	75	-30/+200*
AMT-K-PU-70-100-70	70	100	-30/+200*

\* in the case of intermittent operation 400°C until 2h



## Description

PRQ guides are intended for installing turning vanes in rectangular fittings to direct the air flow. They are made of galvanised steel with rubber gasket. They are used for the installation of sheet metal with a thickness from 0.4 to 1.1mm.

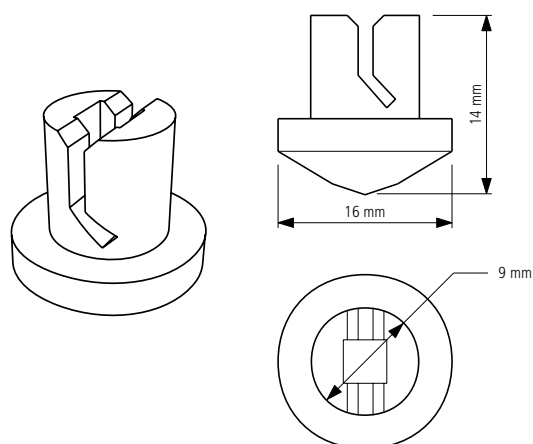
### Example identification

Product code: **PRQ**

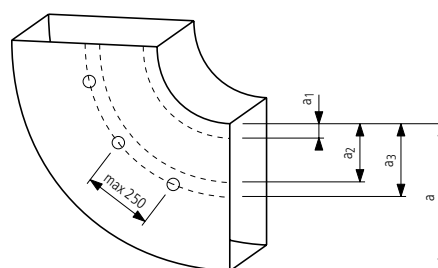
type \_\_\_\_\_

Unlike the guides, the turning vanes are integrated with the fittings, and they are not available as separate products.

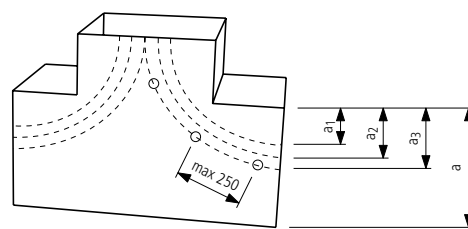
## Dimensions



## Installation diagram



Bends layout of turning vanes



T-piece layout of turning vanes

duct width [mm]	number of vanes [pcs]	Distances between turning vanes		
		$a_1$	$a_2$	$a_3$
$> 400 \leq 800$	1	$a/3$	-	-
$> 800 \leq 1600$	2	$a/4$	$a/2$	-
$> 1600 \leq 2000$	3	$a/8$	$a/3$	$a/2$

# Guide Terminals for Rectangular Fittings

## PRQ-R

[Download Wentyle](#)  
[Download AlnorCAM](#)  
[Buy via B2B](#)



### Description

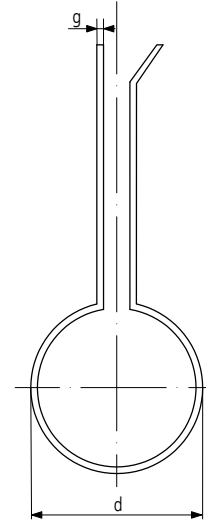
The guide tube terminal for rectangular fittings is fitted to the front of the guide by stiffening it against air pressure.

#### Example identification

Product code: PRQ-R

type \_\_\_\_\_

### Dimensions



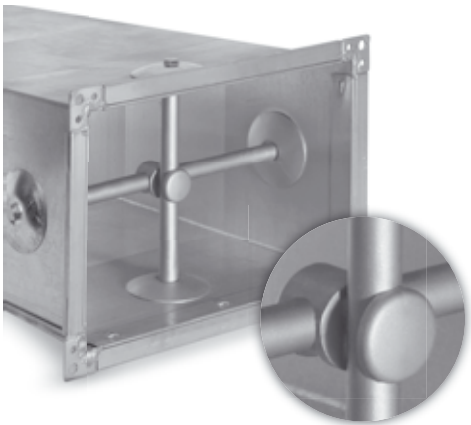
type	tube diameter [mm]	material	turning vane thickness [mm]
PRQ-R	1/2"	galvanised steel	0.5 - 1,5



# Duct Baffles

# WKK, WKK-OCY

[Download Wentyle](#)  
[Download AlnorCAM](#)  
[Buy via B2B](#)

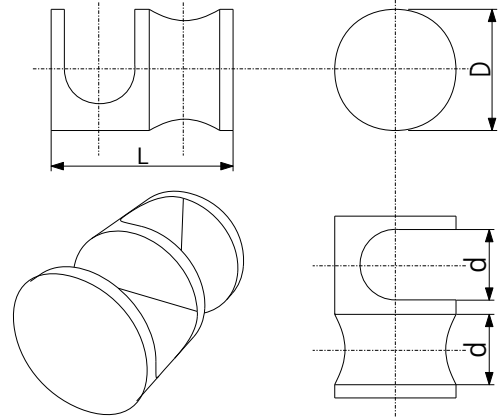


WKK

WKK-OCY



## Dimensions



type	L [mm]	D [mm]	d [cal]	d [mm]	material
WKK	45	30	3/8	16	PVC

## Description

The WKK and WKK-OCY cross baffle is used to stiffen rectangular ducts with large cross-sections. It serves as a connector between crossing pipes measuring 3/8" or 1/2" in diameter.

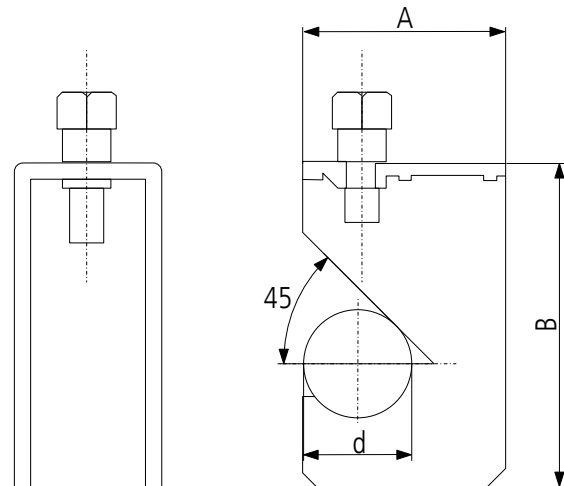
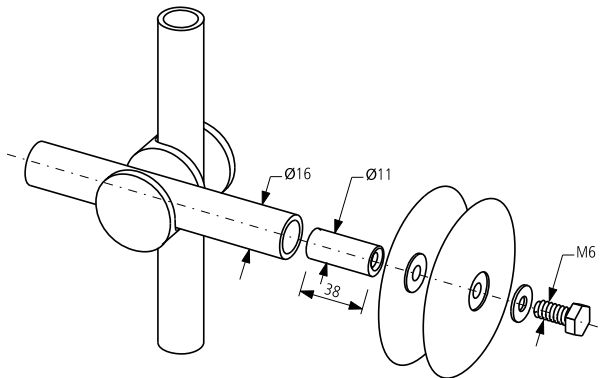
### Example identification

Product code:

WKK

type \_\_\_\_\_

## Installation diagram



type	thickness [mm]	d [cal]	d [mm]	A [mm]	B [mm]
WKK-OCY-3-8	3	3/8	16	35	64
WKK-OCY-1-2	3	1/2	21	40	70

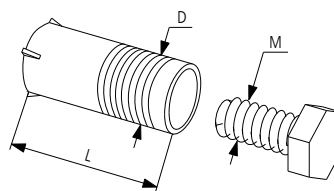
# Duct Baffles

## RURA, WKD

[Download Wentyle](#)  
[Download AlnorCAM](#)  
[Buy via B2B](#)



### Dimensions



dybel rozporowy WKD

type	D [mm]	L [mm]	M [mm]
WKD	11	38	6

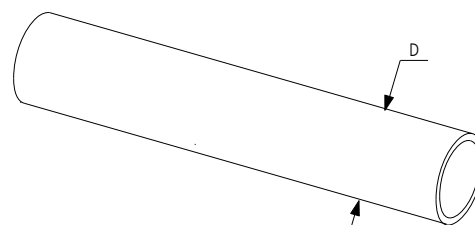
### Description

Galvanized pipe RURA and bolts WKD create a set of elements for the reinforcement of large rectangular ducts. The frequency and method of attachment depends on the dimensions items.

#### Example identification

Product code: \_\_\_\_\_ WKD

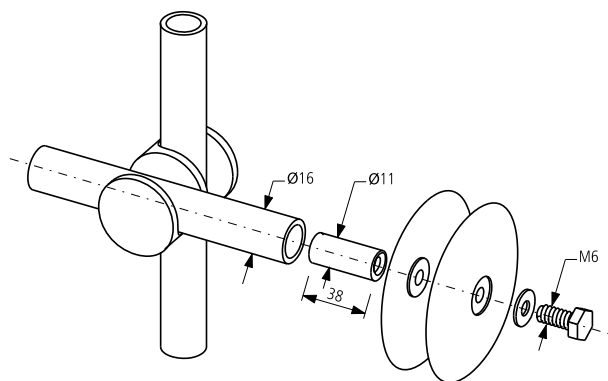
typeE \_\_\_\_\_



RURA

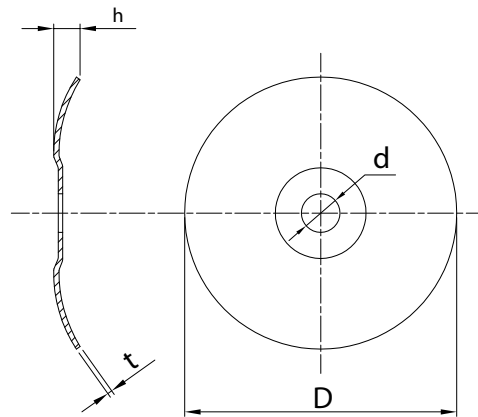
type	D [cal]	D [mm]	aplication
RURA OC. 3/8"	3/8	16	duct strengthen
RURA OC. 3/4"	3/4	26	for the intake roof $d_{max} = 630$
RURA OC. 1"	1	33	for the intake roof $d_{min} = 710$
RURA KW. 3/8"	3/8	16	duct strengthen
RURA AL. 3/8"	3/8	16	duct strengthen
RURA AL. 3/4"	3/4	26	for the intake roof $d_{max} = 630$
RURA CZ. 3/8"	3/8	16	duct strengthen

### Installation diagram





## Dimensions



type	d [mm]	D [mm]	h [mm]	t [mm]
WKT	8,6	75	5	0,7
WKT-60	8,6	60	5	0,8

## Description

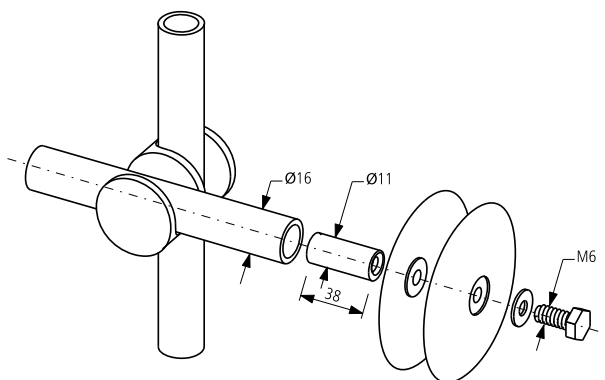
The WKR washer is used for stiffening large rectangular ducts to eliminate their vibrations and deformations. It is made of 0,8 - 1,0mm thick galvanised steel sheet with a shallow or deep nut rib.

### Example identification

Product code: **WKT-85**

type \_\_\_\_\_

## Installation diagram



# Flanges FLS

[Download Wentyle](#)  
[Download AlnorCAM](#)  
[Buy via B2B](#)



## Description

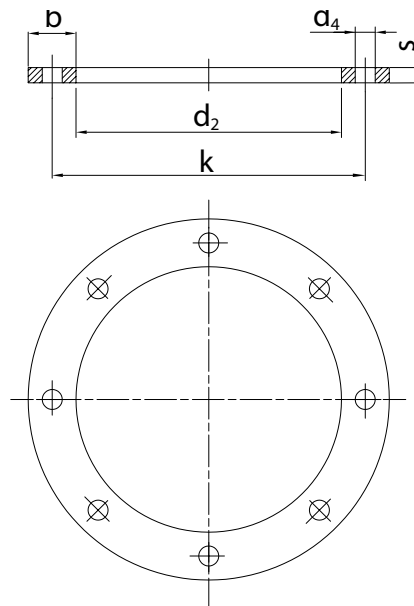
FLS galvanised steel flanges are most often used for the fabrication of lead-ins, ait intakes and roof ejectors. In addition, they can be used for connecting round ducts and fittings with flanges.

### Example identification

Product code: FLS - 160

type \_\_\_\_\_  
 Ød \_\_\_\_\_

## Dimensions



Ød nom	Ød <sub>2</sub> [mm]	bxs [mm]	kØ <sub>±0,5</sub> [mm]	Ød <sub>4</sub> ±0,5 [mm]	number of holes	weight [kg]
80	82	25x5	112	9,5	4	0,18
100	102	25x5	132	9,5	4	0,21
125	127	25x5	157	9,5	4	0,26
140	142	25x5	172	9,5	6	0,41
150	152	25x5	185	9,5	6	0,43
160	162	25x5	192	9,5	6	0,46
180	182	25x5	212	9,5	6	0,51
200	203	25x5	233	9,5	6	0,56
224	227	25x5	257	9,5	6	0,62
250	253	25x5	283	9,5	6	0,69
280	283	30x5	317	9,5	8	0,93
300	303	30x5	339	9,5	8	0,98
315	318	30x5	352	9,5	8	1,03
355	358	30x5	392	9,5	8	1,15
400	404	30x5	438	9,5	8	1,28
450	454	30x5	488	9,5	8	1,43
500	504	30x5	538	9,5	8	1,58
560	564	35x5	600	9,5	12	2,07
630	634	35x5	670	9,5	12	2,31
710	714	35x5	750	9,5	12	2,58
800	804	35x5	840	9,5	16	2,90
900	904	35x5	940	9,5	16	3,24
1000	1005	35x5	1041	9,5	16	3,59
1120	1125	40x5	1169	9,5	24	5,74
1250	1255	40x5	1299	9,5	24	6,38

\* dimensions according to DIN 24154 series 1



## Description

Steel self-tapping screw for quick fastening of L, Z and T type suspensions to sheet metal. They are also suitable for joining round ducts with fittings.

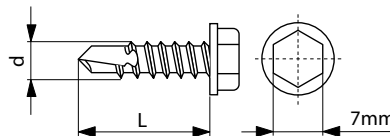
The surface is galvanised.

### Example identification

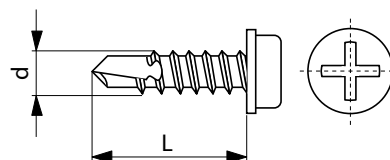
Product code: **WGO13-KL**

type \_\_\_\_\_

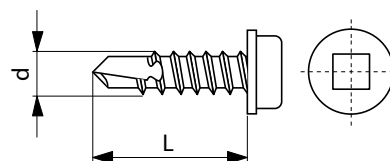
## Dimensions



code	Ød [mm]	L [mm]	cap
WGO09-KL	4,2	9	head
WGO13-KL	4,2	13	head
WGO16-KL	4,2	16	head
WGO19-KL	4,2	19	head
WGO25-KL	4,2	25	head



code	Ød [mm]	L [mm]	cap
WGO09-KZ	4,2	9	Philips
WGO13-KZ	4,2	13	Philips
WGO16-KZ	4,2	16	Philips
WGO19-KZ	4,2	19	Philips
WGO25-KZ	4,2	25	Philips



code	Ød [mm]	L [mm]	cap
WGO09-IB	4,2	9	Allen
WGO13-IB	4,2	13	Allen
WGO16-IB	4,2	16	Allen
WGO19-IB	4,2	19	Allen
WGO25-IB	4,2	25	Allen



**Description**

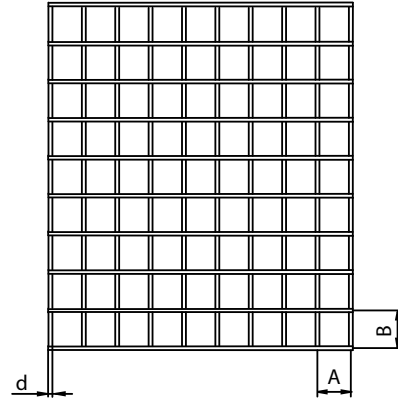
The SIA 12,7-12,7 net is manufactured of 1 mm dia. galvanized steel wire. In ventilation systems the net is used among others in roof and wall intake grills as a protection against external access. The net is offered in a 1000 mm high and 30 running meters long roll.

**Example identification**

Product code: **SIA 12,7-12,7**

type \_\_\_\_\_

**Dimensions**



type	A [mm]		B [mm]	d [mm]
SIA-1,05-1,05	12,7	12,7	1,05	galvanized steel
SIA-K-1,05-1,05	12,7	12,7	1,05	stainless steel 1.4301
SIA-10-10-316L	10,0	10,0	1,05	stainless steel 1.4404

# Damper Mechanism KIT-DS

[Download Wentyle](#)  
[Download AlnorCAM](#)  
[Buy via B2B](#)



## Description

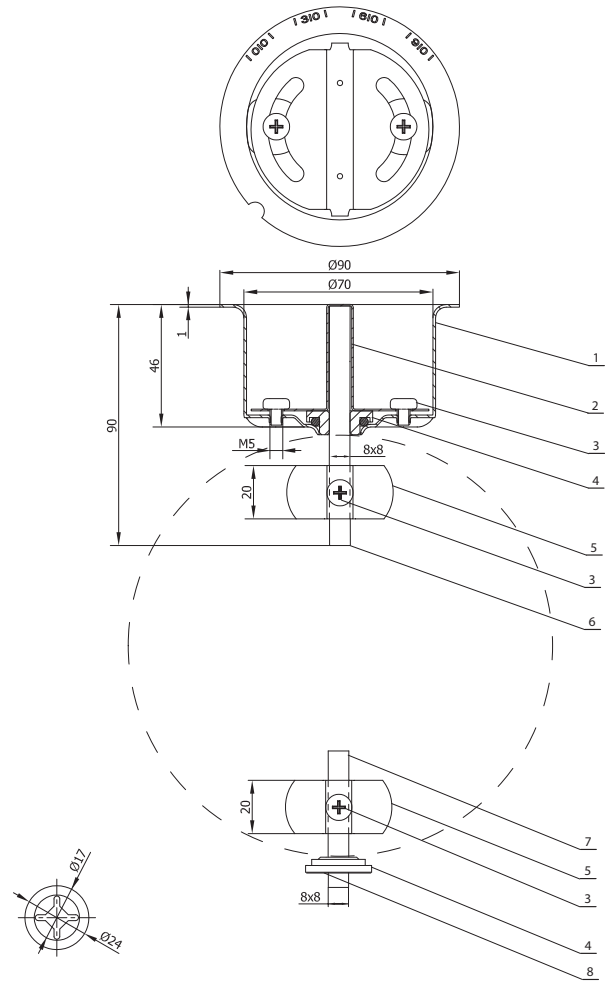
The KIT-DS damper mechanism is made of galvanised sheet metal. It is used for dampers measuring from 80 to 630mm. The KIT-DS fits under the rod of square section with dimensions of 8x8mm.

### Example identification

Product code: **KIT-DS**

type \_\_\_\_\_

## Dimensions



type	use of diameters	material
KIT-DS	80 - 630 mm	galvanised steel

numer	kod	opis	ilość [szt.]
1	KIT-DS-BDY	Housing	1
2	KIT-DS-REG	Regulator	1
3	KIT-DS-SRS-5-5	Screw M5x5	4
4	KIT-DS-TUL-USZ	bearing with seal	2
5	KIT-DS-UCB	Clamp	2
6	KIT-DS-PRET-L	Rod long 8x8	1
7	KIT-DS-PRET-S	Rod short 8x8	1
8	KIT-DS-STW	Pad	1

# Damper Mechanism KIT-DSKS

[Download Wentyle](#)  
[Download AlnorCAM](#)  
[Buy via B2B](#)



## Description

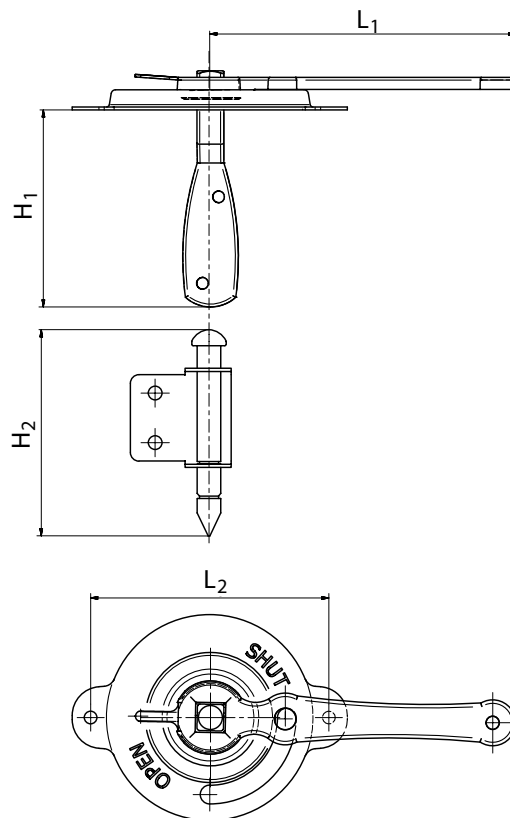
The KIT-DSKS damper mechanism is made of galvanised sheet metal. The KIT-DSKS fits under the rod of square section with dimensions of 8x8mm. It is used for dampers measuring from 80 to 315mm.

### Example identification

Product code: **KIT-DSKS-145**

type \_\_\_\_\_

## Dimensions

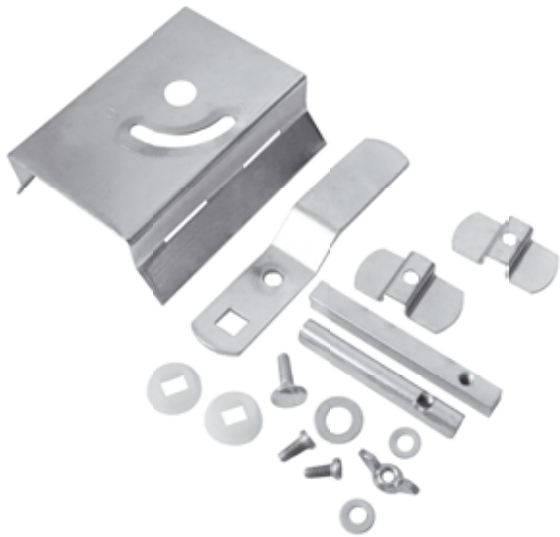


typ	dla średnic	$L_1$ [mm]	$L_2$ [mm]	$H_1$ [mm]	$H_2$ [mm]
KIT-DSKS-145	80 - 160	68	74	52	58
KIT-DSKS-195	150 - 315	106	78	74	82



Damper Mechanisms

# KIT-DSKKS-0/KIT-DSKKS-1



## Description

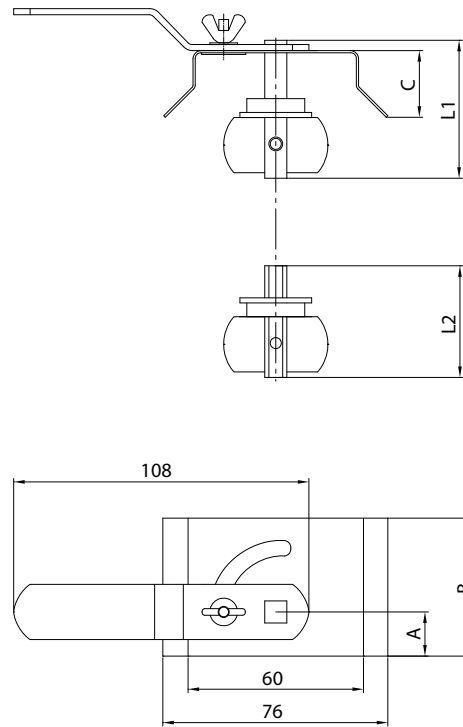
The KIT-DSKKS-0 and KIT-DSKKS-1 damper mechanisms are made of galvanised sheet metal. Dampers are used for dampers measuring from 80 to 250 mm.

### Example identification

Product code: **KIT-DSKKS-1**

type \_\_\_\_\_

## Dimensions



type	range of diameters	L <sub>1</sub> [mm]	L <sub>2</sub> [mm]	A [mm]	B [mm]	C [mm]
KIT-DSKKS-0	80-315	50	40	15	50	27
KIT-DSKKS-1	80-315	70	60	33	90	30

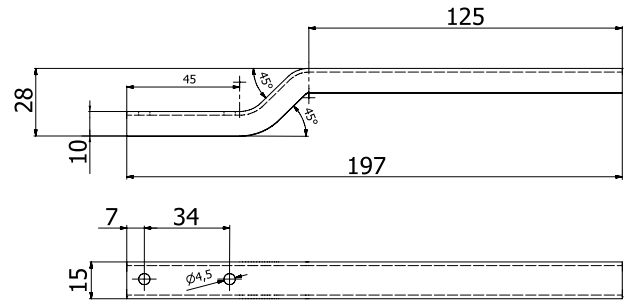
# Handle To Damper Mechanisms

## KIT-DS-H

[Download Wentyle](#)  
[Download AlnorCAM](#)  
[Buy via B2B](#)



### Dimensions



### Description

Handle DS-KIT-H is designed for mounting on the mechanism of KIT-DS. It facilitates manual opening and closing damper. Handle KIT-DS-H is made of galvanized steel and it is particularly recommended for dampers with diameters from 400mm

#### Example identification

Product code: **KIT-DS-H**

type \_\_\_\_\_

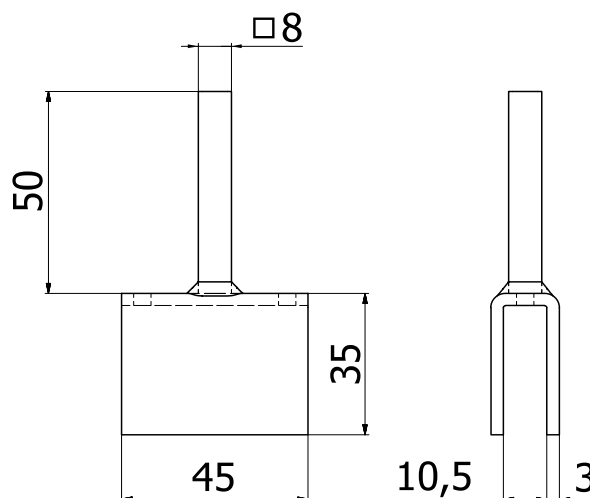
# Damper Mechanism

## KIT-DS-M

[Download Wentyle](#)  
[Download AlnorCAM](#)  
[Buy via B2B](#)



### Dimensions



### Description

Overlay KIT-DS-M is designed for mounting on the KIT-DS mechanism. It facilitates mounting the actuator on damper without having to rework.

KIT-DS-M is made of galvanized steel and fit to most actuators available in the offer Alnor

#### Note:

KIT-DS-M does not fit the actuator: SM24, SM230, NF24A, NF230A, SF24A, SF230A.

#### Example identification

Product code: **KIT-DS-M**

type \_\_\_\_\_

# Damper mechanism KIT-DS-PVC

[Download Wentyle](#)  
[Download AlnorCAM](#)  
[Buy via B2B](#)



## Description

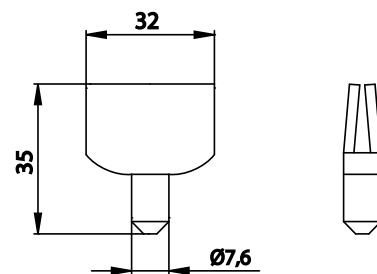
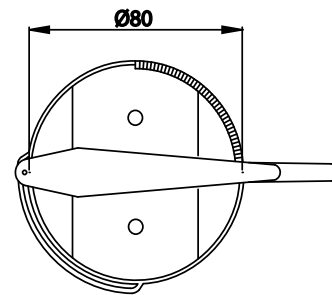
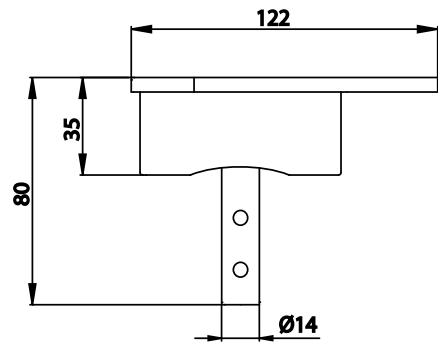
The KIT-DS-PVC damper mechanism is designed for installation in round dampers. It is totally made of plastics. It can be easily and quickly mounted to the damper by means of screws. The KIT -DS-PVC mechanism enables selecting and fixing a desired range within 0° up to 90°.

### Example identification

Product code: **KIT-DS-PVC**

type \_\_\_\_\_

## Dimensions



type	range of diameters	material
KIT-DS-PVC	80 - 315 mm	PVC

# Damper mechanism

## **KIT-DS-CV**

[Download Wentyle](#)  
[Download AlnorCAM](#)  
[Buy via B2B](#)



### **Description**

KIT-DS-CV damper mechanism is made of galvanized sheet with PVC plastic components.

KIT-DS-CV mechanism construction allows to use 50mm thick layer of insulation.

Damper blade angle is visible on the handle in the 0° to 90° range.

Damper blade may be locked in place with a screw

KIT-DS-CV damper mechanism is easily adapted for use with Belimo servomotors. In such a case, the ordered servomotor must be adapted to the 8x8 mm square rod.

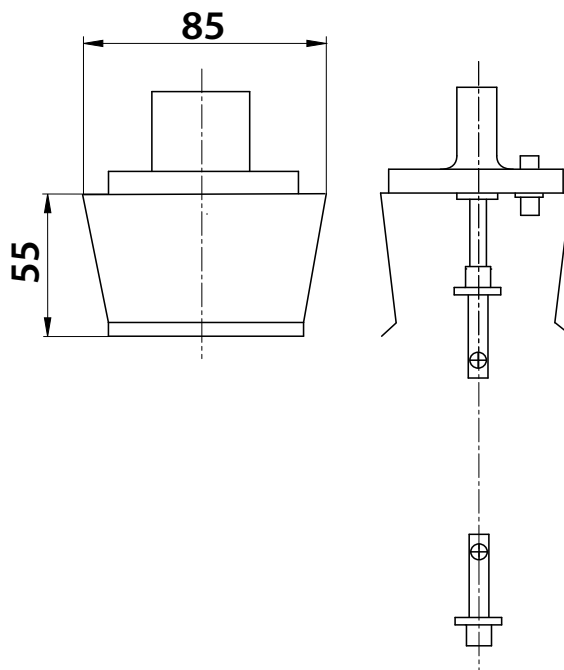
It can be used with damper sizes from 80 to 400 mm

### **Example identification**

Product code: **KIT-DS-CV**

typ \_\_\_\_\_

### **Dimensions**



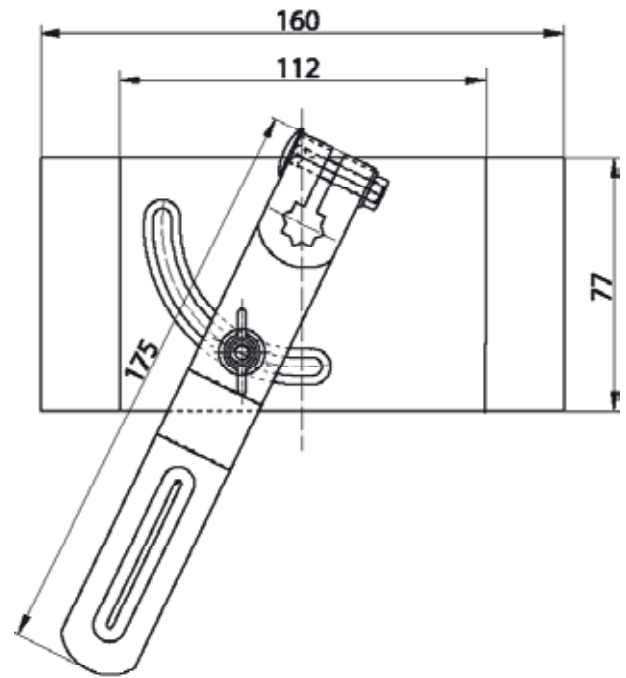
# Damper Mechanism

## KKS-2

[Download Wentyle](#)  
[Download AlnorCAM](#)  
[Buy via B2B](#)



### Dimensions



### Description

The KKS-2 damper mechanism is made of galvanised sheet metal. It is used for dampers measuring from 315 to 800mm and multi-blade dampers. The KKS-2 fits under the rod of square section with dimensions of 10x10mm.

#### Example identification

Product code: **KKS-2**

type \_\_\_\_\_

type	A [mm]	B [mm]	C [mm]	L [mm]	application
KKS-2	112	160	77	175	DSQW

# Rod Drawn **PRET**

[Download Wentyle](#)  
[Download AlnorCAM](#)  
[Buy via B2B](#)



## Dimensions



## Description

Rod drawn square is used to produce damper mechanism. Commercial rod length is 6mb.

The table below shows dimensions which are needed for proper submission damper with one mechanism.

### Example identification

Product code: **PRET10-10**

type \_\_\_\_\_

code	AxA [mm]	L [mm]	aplication
PRET8-8	8x8	150	round dampers, mechanism KIT-DSKS, KIT-DS
PRET10-10	10x10	100	damper DSQW, mechanism KKS-2
PRET12-12	12x12	100	damper DSQW-A

Prefabricated Steel Air Intake/Launcher Accessories

**CSQ-PREF/WSQ-PREF**

[Download Wentyle](#)  
[Download AlnorCAM](#)  
[Buy via B2B](#)



**Description**

Prefabricated steel air intake/launcher accessories enable individual submitting them in accordance with the necessary dimensions. Intake needed to build SIA-12-12, 7 and screws WGO.

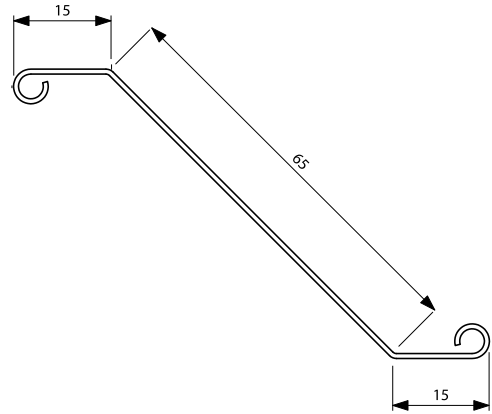
**Example identification**

Product code: **OPPC**

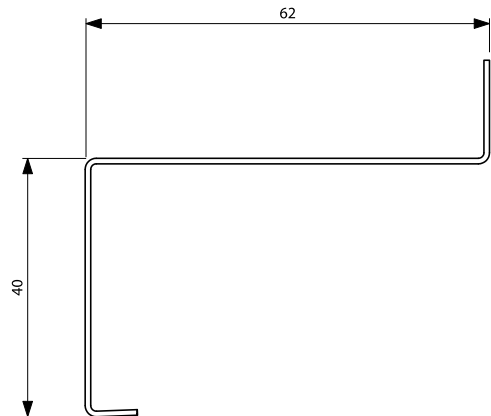
type \_\_\_\_\_

**Dimensions**

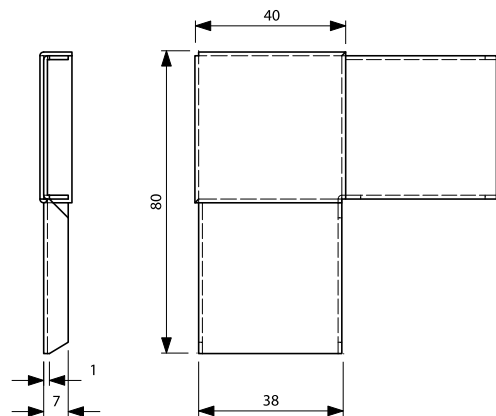
**QPPC**  
galvanised air intake/launcher blade - commercial length



**QPRC**  
air intake/launcher guiding side wall - commercial length 5m



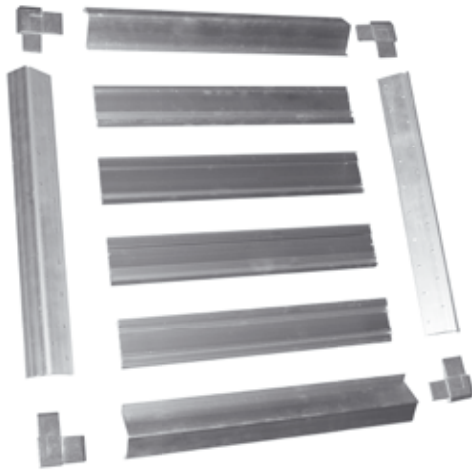
**QNT**  
air intake/launcher side corner





# Prefabricated Aluminium Air Intake/Launcher Accessories

## CSQ-A-PREF/WSQ-A-PREF



### Description

Prefabricated aluminium air intake accessories enable individual submitting them in accordance with the necessary dimensions. Intake needed to build SIA-12-12, 7 and screws WGO.

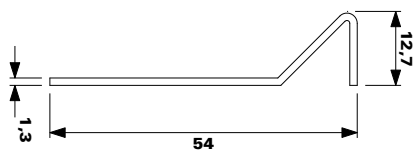
#### Example identification

Product code: **QCSZ-BA**

type \_\_\_\_\_

#### QCLO-CH

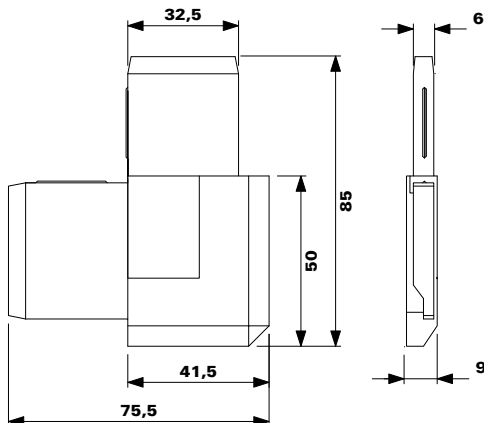
Eaves strip intake/launcher. It is used in case of unusual dimensions of intake/launchers such as 530x530.



#### QCNA-GR-2 - right-hand

#### QCNA-GR-1 - left-hand

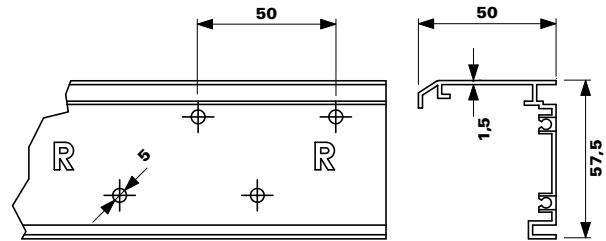
Corner of the intake / aluminum launcher



### Dimensions

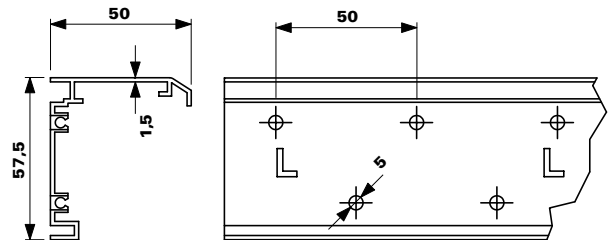
#### QCSP-SD

Right-hand guiding side wall - commercial length 5m



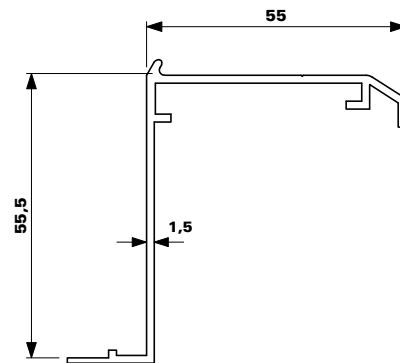
#### QCSP-SS

Left side wall leading - commercial length 5m



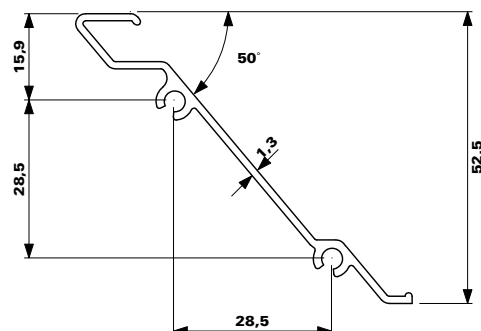
#### QCSZ-BA

Closing air intake/launcher side wall - commercial length 5m. Applied on the top and bottom intake.



#### QCPA-PA

aluminium air intake/launcher blade - commercial length 5m



# Prefabricated acid-resistant air intake/ejector elements **CSQ-K-PREF/WSQ-K-PREF**



## Description

Prefabricated acid-resistant wall mounted air intake/ejector elements CSQ-K-PREF and WSQ-K-PREF allow to make your own installations according to the desired dimensions. Additionally, the SCQ-K air intake requires a SIA-KW-20-10 mesh and WGO bolts.

### Example identification

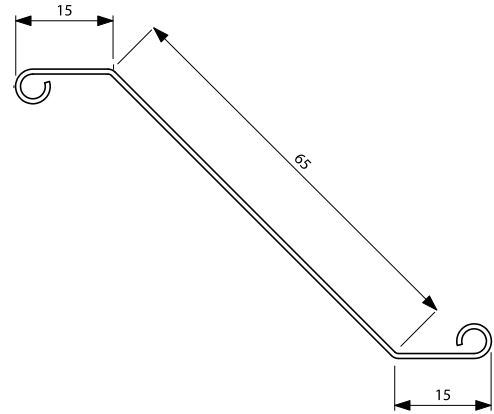
Product code: **QPPC-K**

typ \_\_\_\_\_

## Dimensions

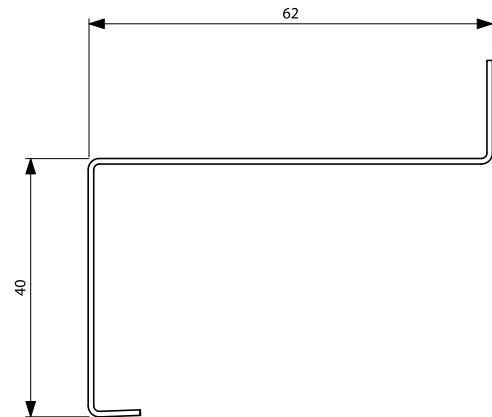
### QPPC-K

1.4016 acid-proof steel sheet edge for air intake/ejector - trading unit length 2,5 rm



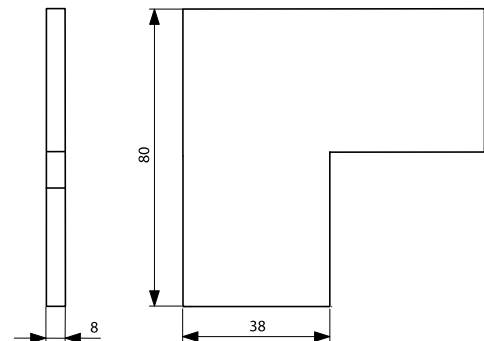
### QPRC-K

1.4016 acid-proof steel sheet leading side wall for air intake/ejector - trading unit length 2,5 rm

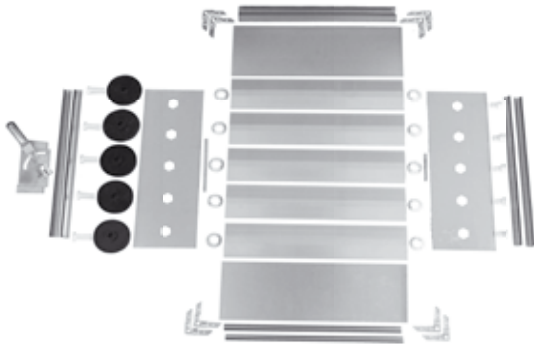


### QNT-K

1.4016 acid-proof air-intake/ejector corner



# DSQW-PREF



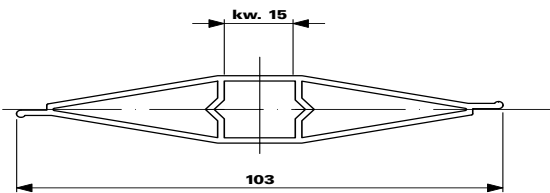
## Description

Prefabricated steel multi blade damper accessories enable individual submitting them in accordance with the necessary dimensions.

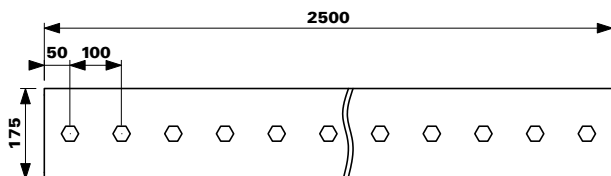
Example identification  
 Product code: **QPA**  
 type \_\_\_\_\_

\* Products are not available on the German market

**QPA**  
 Aluminium duct of the galvanised damper - commercial length 5m



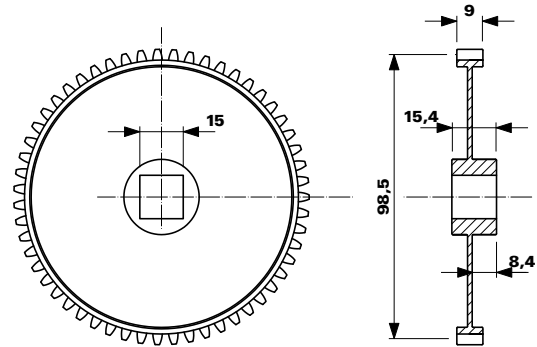
**QSB**  
 Galvanised steel damper side wall.- commercial length 2,5m



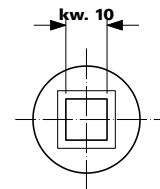
\* Products are not available on the German market

## Dimensions

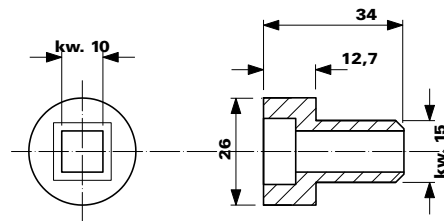
**QKZ**  
 PVC gear



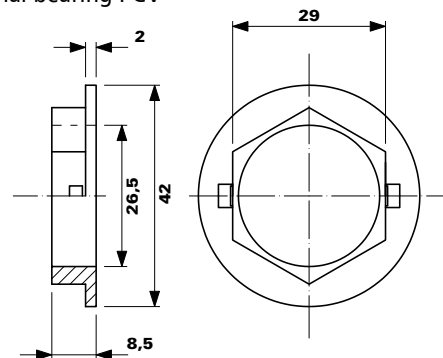
**QOTD**  
 Long plastic axle



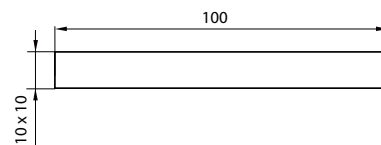
**QOTK**  
 Short plastic axle



**QPL-8**  
 hexagonal bearing PCV

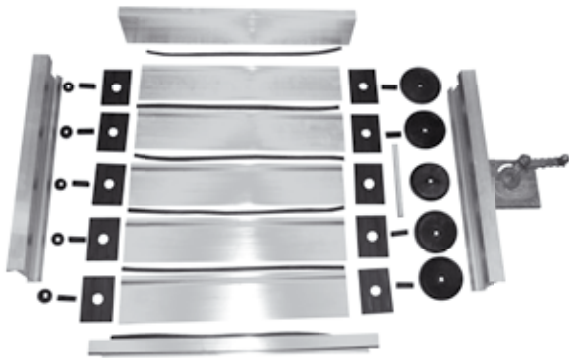


**Pret10-10**  
 Rod 10x10



Prefabricated Aluminium Multi-Blade Damper Accessories

# DSQW-A-PREF



## Description

Prefabricated aluminium multi blade damper accessories enable individual submitting them in accordance with the necessary dimensions.

### Example identification

Product code: **QDPR10**

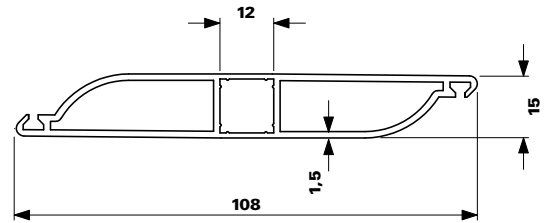
type \_\_\_\_\_

*\* Products are not available on the German market*

## Dimensions

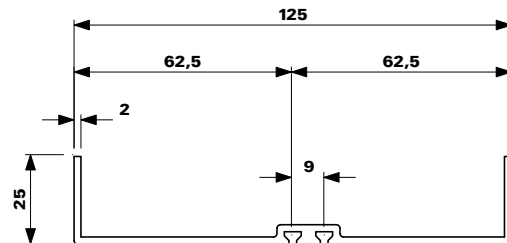
### QDPR10

Damper aluminium profile - commercial length 5m. For each profile is required gasket QDUŁ12.



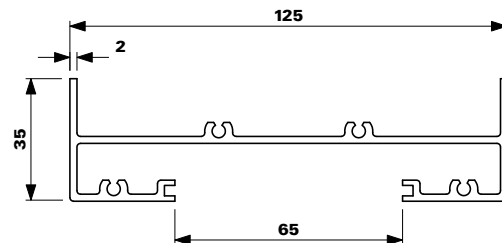
### QDSZ11

Closing side wall - commercial length 5m. For each closing side wall is required gasket QDUŁ12.



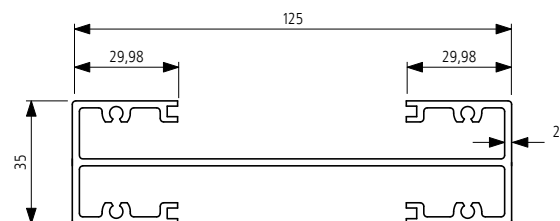
### QDSP12

Guiding side wall - commercial length 5m



### QDSD13

Split damper wall - commercial length 5m. Split damper wall should be used for dimension A ≥ 1400mm.

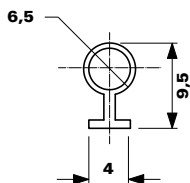


# DSQW-A-PREF

## Dimensions

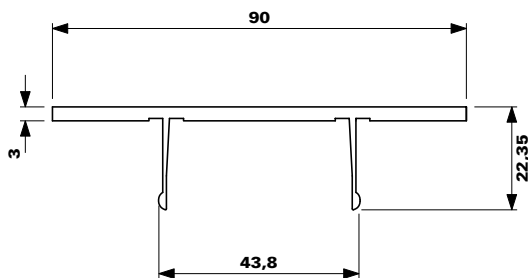
### QDUŁ12

Rubber washer for QDPR10-L edge and QDSZ11-L wall



### QDPM580

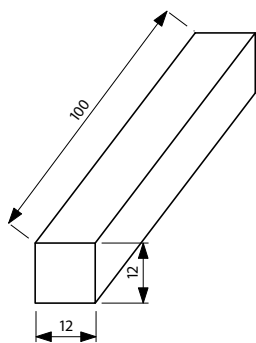
Aluminum servomotor base Installed to QDSP12-L side wall.  
Required length: 150-200mm depending on servomotor type



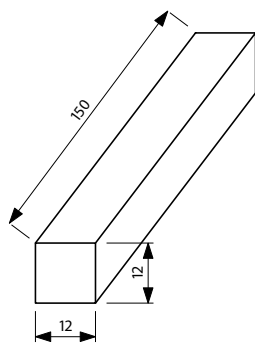
Drawn bar 12 x 12 mm

PRET-A-12-12-100

PRET-A-12-12-150



handheld mechanism



for actuator

## Dimensions

### QDZK06

Spacer Required for atypical damper dimensions, for example 530 x 530



### QDMPS93

Damper mechanism



### QDCPS93

Full set of components made of polyamide and fiberglass, includes the following items:

- one cogwheel
- one bearing bushing
- two mandrels
- left and right sleeve joints



Prefabricated elements for multiblade dampers  
aluminum light dampers

# DSQW-A-PREF



## Description

Prefabricated light aluminium multi blade damper accessories enable individual submitting them in accordance with the necessary dimensions.

### Example identification

Product code: **QDPR10-L**

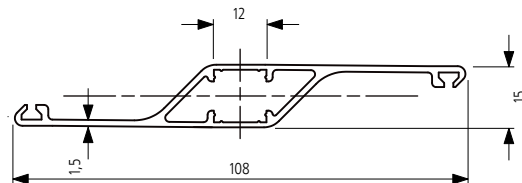
type \_\_\_\_\_

*\* Products are not available on the German market*

## Dimensions

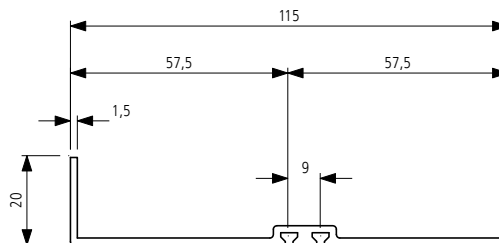
### QDPR10-L

Damper aluminium profile - commercial length 6m.  
For each profile is required gasket QDUŁ12-L.



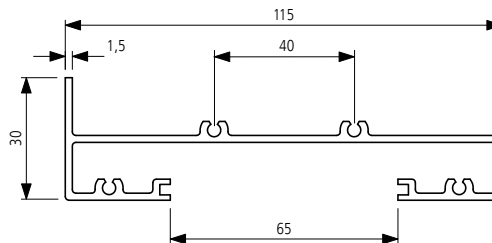
### QDSZ11-L

Closing side wall - commercial length 6m. For each closing side wall is required gasket QDUŁ12-L.



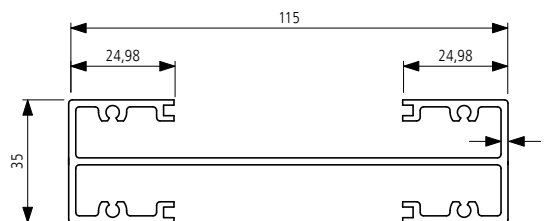
### QDSP12-L

Guiding side wall - commercial length 6m



### QDSD13-L

Split damper wall - commercial length 5m. Split damper wall should be used for dimension A ≥ 1400mm.



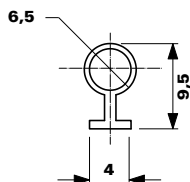
Prefabricated elements for multiblade dampers  
aluminum light dampers

# DSQW-A-PREF

## Dimensions

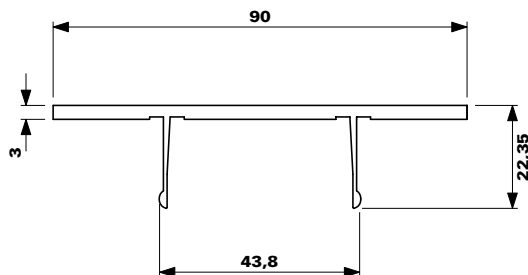
### QDUŁ12

Rubber washer for QDPR10-L edge and QDSZ11-L wall



### QDPMS80

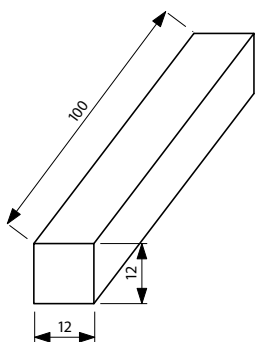
Aluminum servomotor base Installed to QDSP12-L side wall.  
Required length: 150-200mm depending on servomotor type



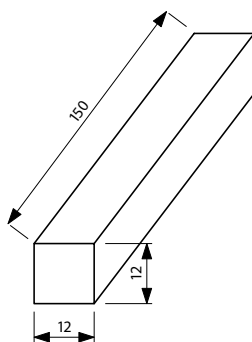
Drawn bar 12 x 12 mm

PRET-A-12-12-100

PRET-A-12-12-150



for manual mechanism



for servomotor

## Dimensions

### QDZK06

Spacer Required for atypical damper dimensions, for example 530 x 530



### QDMPS93-L

Damper mechanism

### QDCPS93

Full set of components made of polyamide and fiberglass, includes the following items:

- one cogwheel
- one bearing bushing
- two mandrels
- left and right sleeve joints



Prefabricated elements for multiblade dampers  
self closing aluminum dampers

# DSQOW-A-PREF



## Description

Prefabricated elements for self closing DSQOW-A multiblade damper allow to install them on your own, tailoring them to the required dimensions.

### Example identification

Product code: **QDPS080**

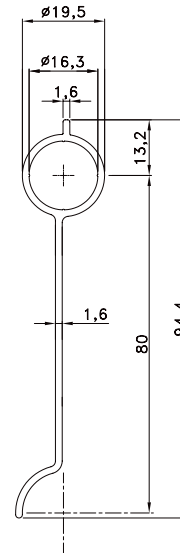
type \_\_\_\_\_

*\* Products are not available on the German market*

## Dimensions

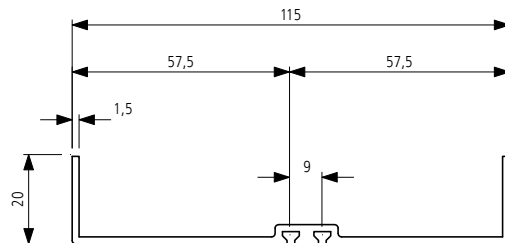
### QDPS080

Damper aluminum profile - trading unit length 5m.



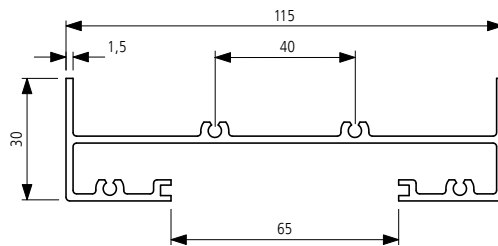
### QDSZ11-L

Upper-lower shutoff wall - trading unit length 6m  
QDU12-L washer is required for each wall.



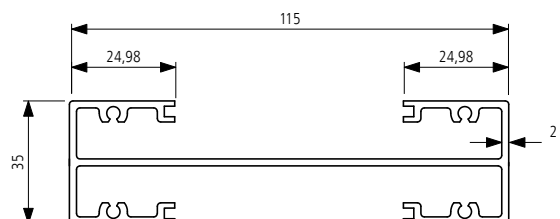
### QDSP12-L

Leading side wall - trading unit length 6m



### QDSD13-L

Sectional damper wall - trading unit length 6m The sectional damper wall should be used with  $A \geq 1400$ mm pieces.





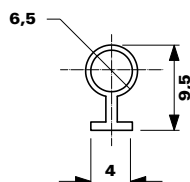
Prefabricated elements for multiblade dampers  
self closing aluminum dampers

# DSQOW-A-PREF

## Dimensions

### QDUŁ12

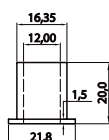
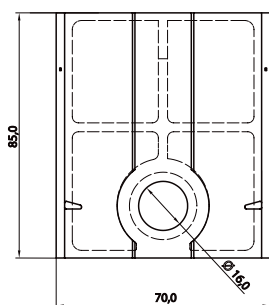
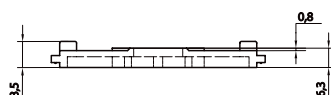
Rubber washer for QDSZ11 wall



### QDCPS200

Full set of components is made of polyamide and fiberglass,  
it includes the following items:

- one bushing
- one sleeve joint



# Ventilation ducts devices

## NI-AKB-70

[Download Wentyle](#)  
[Download AlnorCAM](#)  
[Buy via B2B](#)



### Description

Manual riveter NI-AKB-70 is designed for connecting ventilation frames with ventilation ducts. It is especially applicable for assembling ventilation ducts when it is necessary to cut the ducts into parts of desired lengths.

The riveter is equipped with a manual mechanism which causes moving of a punch in a head, what makes an overpress. Small dimensions of the head enable easy making of connections even in places of difficult access.

#### Technical data:

- controlling: manual
- weight: 7kg

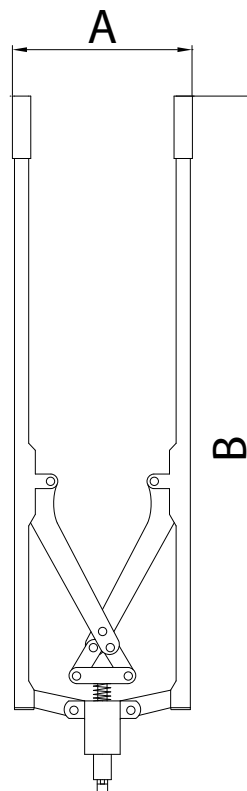
material	max.branch thickness [mm]	max. material thickness [mm]
galvanized steel	0,7	2,1
stainless steel	0,5	1,5
aluminium	1,0	3,0

#### Example identification

Product code: **NI-AKB-70**

type

### Dimensions



code	A [mm]	B [mm]
NI-AKB-70	380	980