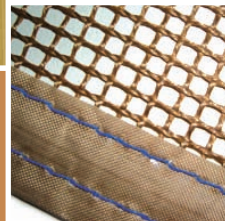
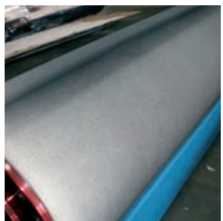




Thank you for celebrating  
our 200th Anniversary in 2011 with us !



- Sammying process
- Setting out process
- Ironing & Embossing process

**DOZZFUS MULLER**

TECHNOLOGY FOR FASHION

*Since 1811*

# Spare parts for sammying and setting out machines

Our high quality products are specially recommended for the following machines : BAUCE, ESCOMAR, CM, TRE

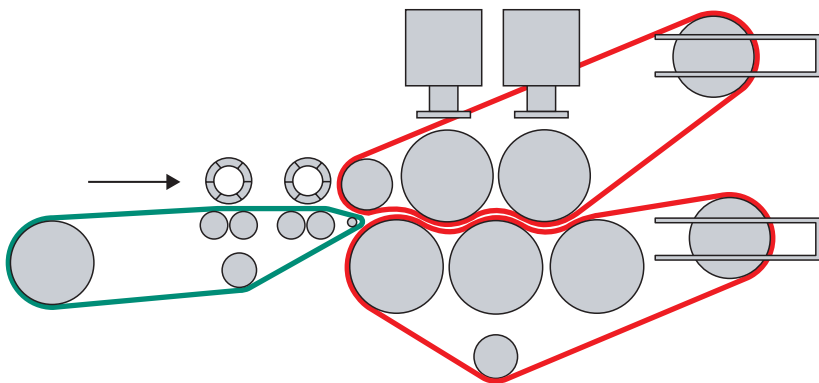
## FELTS FOR THROUGH FEED SAMMYING PROCESS (3, 5 or 6 cylinders machines)

Type of leather	Production	Type of machine	Process	Recommended felt	Characteristics				
					Composition	Weight (g/m <sup>2</sup> )	Thickness (mm)	Water permeability l/h/ 10cm <sup>2</sup> (under 2 bars of water pressure)	Lifetime
Cow, Buffalo, Calf, Pig, Goat, Sheep, Reptile	Automotive, upholstery	5-6 cylinders machines for heavy sammying	Wet blue, vegetal tanning, greasy hides	ESCO S 95	100% synthetic	9500	18	350	+++++
	Shoes, garments, bags	3 cylinders machines	Wet blue tanning	ESCO M 85	30% wool - 70% synthetic	8500	17	330	+++
			Wet blue, vegetal tanning, greasy hides	ESCO S 85	100% synthetic			300	++++
			Wet blue tanning	ESCO M 75	30% wool - 70% synthetic	7500	15	400	++
			Wet blue, vegetal tanning, greasy hides	ESCO S 75	100% synthetic			370	+++



- Better & Homogeneous skin drying
- Immediate drying effect
- Easy felt degreasing (accentuated lifespan)

- All our felts are available in black color ("N" quality)
- Homogeneous density of around 500
- Easy guiding

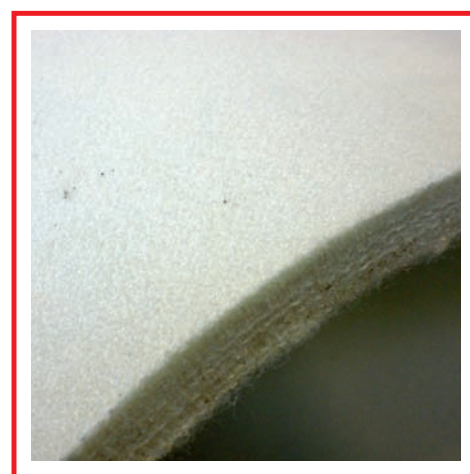
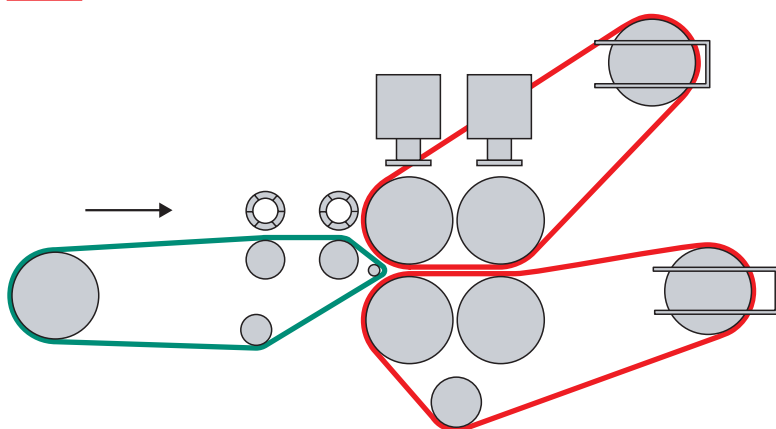


## FELTS FOR CONTINUOUS SETTING OUT PROCESS (4 cylinders machines)

Type of leather	Production	Process	Recommended felt	Characteristics				
				Composition	Weight (g/m <sup>2</sup> )	Thickness (mm)	Water permeability l/h/ 10cm <sup>2</sup> (under 2 bars of water pressure)	Lifetime
All types	Automotive, upholstery shoes, gloves, bags, garments	After dyeing	SETO S 85	100% synthetic	8500	17	300	++++



- Surface : special finishing for easy sliding
- Homogeneous density of around 500

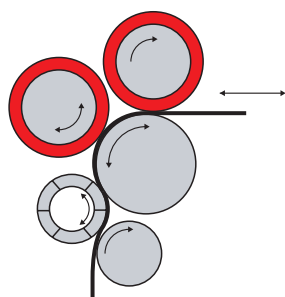


## SLEEVES FOR DISCONTINUOUS SETTING OUT PROCESS / FINISHING

Type of leather	Production	Fitting	Process	Recommended felt	Characteristics				
					Composition	Weight (g/m <sup>2</sup> )	Thickness (mm)	Water permeability l/h/ 10cm <sup>2</sup> (under 2 bars of water pressure)	Lifetime
Cow, Buffalo, Calf, Pig	Shoes, automotive, upholstery	Loose	Wet blue tanning	SAMO M 80	30% wool - 70% synthetic	8000	16	280	+++
			Vegetal tanning, greasy hides, after dyeing	SAMO S 80	100% synthetic			270	++++
Sensitive leather Ex : Goat, Sheep	Gloves, bags, garments	Adjusted	Wet blue tanning	SAMO W 60 A	100% wool	4800 to 9600	10 to 20	depending upon the quality	++
		Tight	Wet blue tanning	SAMO W 60 T	100% wool			depending upon the quality	++



- Excellent dimensional stability
- Homogeneous density of around 500



# Spare parts for ironing & embossing machines

Our high quality products are specially recommended for the following tannery machines : BERGI, ROTOPRESS, MOSTARDINI, ROTOPIA, SHANGHAI SUNHOME, NANTONG SIRUI, ÖZDERSAN, SVIT, TB, 3H, ...

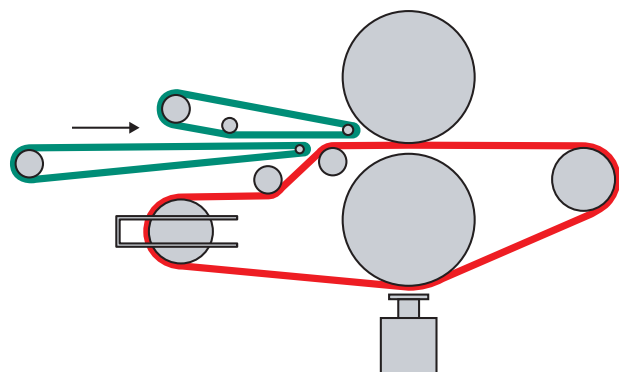
## FELTS FOR CONTINUOUS IRONING & EMBOSsing PROCESS

Production	Process	Type of leather	Working parameters (approx. data)		Recommended felt	Characteristics				
			Pressure (bars)	Temp. (ref : 140°C)		Composition	Weight (g/m <sup>2</sup> )	Thickness (mm)	Density	Lifetime
Automotive, upholstery	Heavy Embossing	Heavy and thick leather Ex : Cow, Buffalo	up to 240	< 140°C	EMBO M 82	50% wool - 50% synthetic + anti-static fibres	8200	13	600	++++
	Ironing / Embossing	Cow, Pig, Calf	up to 150	> 140°C	EMBO S 75	100% synthetic + anti-static fibres	7500	13	600	++++
			up to 150	< 140°C	EMBO M 70	50% wool - 50% synthetic + anti-static fibres	7000		550	+++
Shoes, bag, garments	Ironing / Embossing	Sensitive leather Ex : Goat, Sheep	up to 150	< 140°C	EMBO W 72	100% wool	7200	12	600	+++
	Ironing	Cow, Pig, Calf	under 50	< 140°C	EMBO M 55	50% wool - 50% synthetic + anti-static fibres	5500	11	500	++++



- Special surface finishing for anti-fold effect
- Anti-static
- Light / Strong embossing

- Perfect guidability and dimensional stability
- Broken needle pieces are removed
- Non marking joint



## FELT PADS FOR EMBOSsing PRESSES

Production	Type of leather	Process	Recommended felt	Characteristics			
				Density	Thickness (mm)	Composition	Finishing
Shoes, automotive, garments, upholstery, bags	Cow, Pig, Calf	Heavy embossing	PADO W 140	700	20	100% wool	washed and carbonised wool
		Mid embossing	PADO W 100	550			
		Soft embossing	PADO W 60	300			



- Delivered with chamfer with 45° bevelled edges
- Available in different thicknesses and sizes
- The PADO W 100 is kept in stock for standard sizes 1370 x 1000 x 20 mm and 1370 x 660 x 20 mm

