



Designer Manufacturer

MOBINOX



Stainless steel mobile housing for computer equipment

Designed to hold, organise and protect IT workstations or various configurations of labelling machinery

Characteristics:

- Mechanically welded assembly;
- Structure made from stainless steel 304 composed of four vertical uprights to adjust shelf heights;
- Connections: Two standard cable glands (7 to 13 mm) to feed cables.

Upper section:

- Curved support tube 30 mm diameter, to take (on option): a MONITOR MOUNT, a PISTOL MOUNT, or an IP 65 WATERPROOF LCD SCREEN ENCLOSURE;
- Stainless steel worktop designed for a keyboard and mouse;
- Handling: 1 front handle welded to the structure.

Lower section:

- Encased by 10 mm thick composite panels compatible with WiFi and RF transmissions;
- One front door mounted on three polyamide hinges allowing access to the computer equipment;
- Door closed with two compression latches;
- 19 mm thick pull-out PVC shelf mounted on stainless steel triple extension rails designed for a printer or a labelling machine;
- Capable of handling several height-adjustable shelves for printers and/or labelling machines;
- Lower stainless steel shelf designed to take an optional cabinet providing an autonomous power supply (batteries, converters, chargers, etc.) on two polyethylene (PE) profiles;
- Ground contact: 4 x 100 mm diameter PE wheels with stainless steel structure and plate, including 2 pivoting braked wheels and 2 fixed wheels.

Advantages:

- Mobility and ergonomy
- Protection and guaranteed sealing
- Optimised productivity

Available in steel version: MOBICAR



MOBINOX DIMENSIONS (mm):

Outer dimensions

W 560 x D 625 x H 1 430 (support tube included)

W 560 x D 625 x H 1040 (from floor to worktop level)

Inner dimensions

W 460 x D 540 x H 880

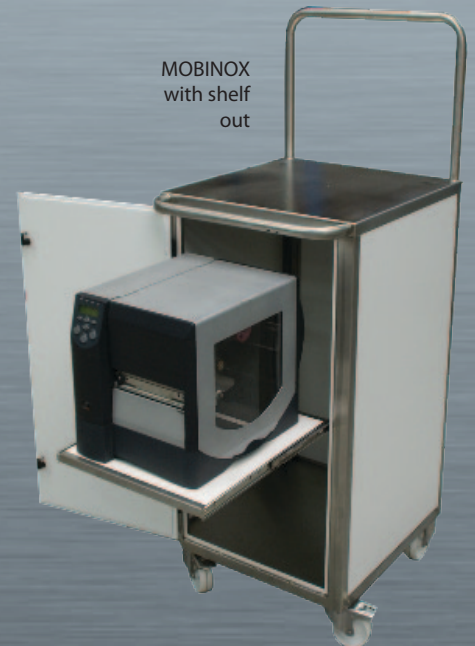
MOBINOX with Option IP 65 WATERPROOF LCD SCREEN ENCLOSURE and ENERGY CABINET option



MOBINOX with Option IP 65 WATERPROOF LCD SCREEN ENCLOSURE and TAV L 24 option



MOBINOX with shelf out



REALISATIONS

Fixed and mobile workstations

DESCRIPTION OF OPTIONS

The perfect food grade solution for protected, mobile, computer equipment



Option IP 65 WATERPROOF LCD SCREEN ENCLOSURE

- Protects flat screens against humidity, cold, splashes, etc.
- 10 mm thick composite walls;
- Smooth surface, two sealed ventilation inlets;
- Attached to the curved support tube with two omegas;
- Screen access by the handle on the cover on the top of the cabinet.



Option KDL

- Opening cable gland system to feed cables without having to remove the connectors;
- The cable gland consists of two sections which hold the cables in the seals;
- Generally fitted to one of the side walls, and guaranteeing a leaktight seal.



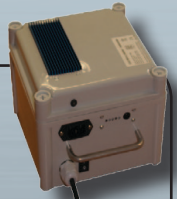
AGM Battery



ENERGY CABINET option

- Available with AGM (acid-free) and LITHIUM-IRON (Li-Fe) batteries;
- Single, perfectly insulated and ventilated housing;
- Houses batteries and all peripherals (converters, chargers, etc.);
- Provides power to multiple consumers (PC, printer, terminal, monitor, etc.) from its multi-voltage outputs (5 - 24 V DC and/or 230 V AC);
- Batteries certified for all types of transport: air, land and sea;
- Modular, scalable cabinet: plug-in, interchangeable converter boards depending on individual requirements

Battery
lithium iron



LABEL SLOT option

- TAV: Inspection port in unbreakable polycarbonate Available in two sizes:
 - TAV L 12: W 220 x H 100 mm;
 - TAV L 24: W 220 x H 190 mm;



Slot
model
TAV L 24

Additional options:

- Locks;
- Writing desk;
- Additional fixed or sliding shelf;
- Monitor mount;
- etc.