

VDI-Werkzeughalter

VDI-Tool holders



■ Inhalt:

- | Werkzeughalter DIN 69880
- | Stangengreifer
- | Mitlaufende Zentrierspitzen
- | Räumwerkzeughalter
- | Pendelhalter
- | Werkstückanschläge
- | Prüfdorne
- | Reduzierbuchsen, Kugelspritzdüsen, O-Ringe
- | Schutzstopfen

■ Content:

- | Tool holders DIN 69880
- | Bar pullers
- | Revolving tailstock centres
- | Broach tool holders
- | Floating chucks
- | Work piece stops
- | Test arbors
- | Reduction sleeves, ball spray nozzles, O-rings
- | Protective plugs

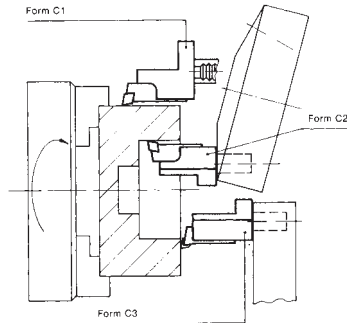


VDI-Halter

VDI-Tool holders

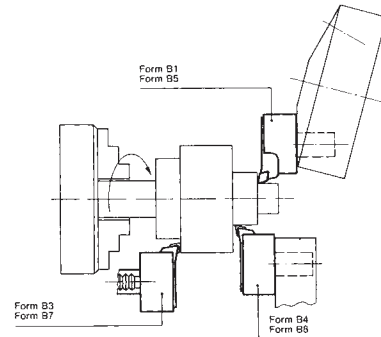
Einsatz von Axial-Werkzeughaltern bei linker Spindeldrehrichtung

Application of axial tool holders with left-hand spindle rotation



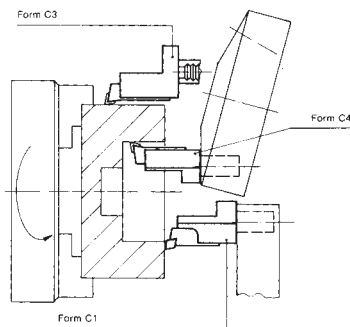
Einsatz von Radial-Werkzeughaltern bei linker Spindeldrehrichtung

Application of radial tool holders with left-hand spindle rotation



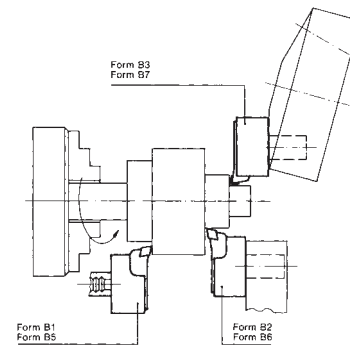
Einsatz von Axial-Werkzeughaltern bei rechter Spindeldrehrichtung

Application of axial tool holders with right-hand spindle rotation



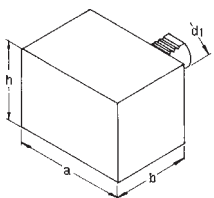
Einsatz von Radial-Werkzeughaltern bei rechter Spindeldrehrichtung

Application of radial tool holders with right-hand spindle rotation



Typ A1, Werkzeughalter-Rohling, rechteckig*

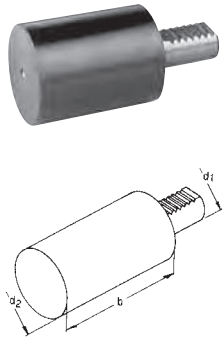
Type A1, rectangular soft blank*



d1 mm	a mm	h mm	b mm	Art.-Nr./ Order no	EUR
16	78	44	44	47-A1-16-44	48,90
20	100	60	65	47-A1-20-65	57,20
25	100	60	75	47-A1-25-75	61,40
30	130	76	85	47-A1-30-85	80,10
40	151	96	100	47-A1-40-100	119,50
50	160	120	125	47-A1-50-125	150,80
60	165	125	160	47-A1-60-160	186,20

* Material 42 CRMo 4

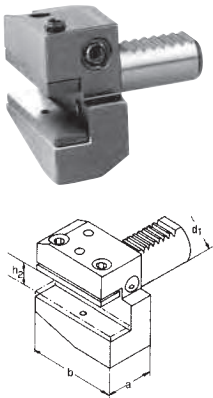
Typ A2, Werkzeughalter-Rohling, rund*
Type A2, round soft blank*



d1 mm	d2 mm	b mm		Art.-Nr./ Order no	EUR
16	40	60	●	47-A2-16-60	29,60
20	50	70	●	47-A2-20-70	35,20
25	58	80	●	47-A2-25-80	33,80
30	68	100	●	47-A2-30-100	36,90
30	68	240	●	47-A2-30-240	56,70
40	83	120	●	47-A2-40-120	45,80
40	83	320	●	47-A2-40-320	80,30
50	98	135	●	47-A2-50-135	67,50
50	98	400	●	47-A2-50-400	144,70
60	123	150	●	47-A2-60-150	107,80
60	123	480	●	47-A2-60-480	325,20

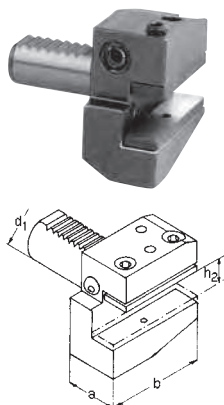
* Material: 42 CrMo 4

Typ B1, Radial-Werkzeughalter, rechts, kurz
Type B1, radial tool holder, right-hand, short



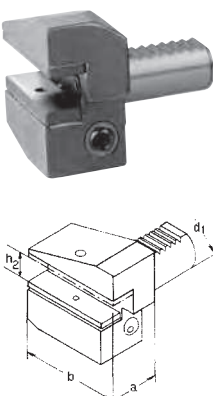
d1 mm	h2 mm	a mm	b mm		Art.-Nr./ Order no	EUR
16	10/12	24	42	●	47-B1-16-12	51,50
20	12/16	30	55	●	47-B1-20-16	51,50
25	12/16	30	55	●	47-B1-25-16	51,80
30	16/20	40	70	●	47-B1-30-20	54,60
40	20/25	44	85	●	47-B1-40-25	62,10
50	25/32	55	100	●	47-B1-50-32	84,00
60	25/32	60	125	●	47-B1-60-32	140,40

Typ B2, Radial-Werkzeughalter, links, kurz
Type B2, radial tool holder, left-hand, short



d1 mm	h2 mm	a mm	b mm		Art.-Nr./ Order no	EUR
16	10/12	24	42	●	47-B2-16-12	51,80
20	12/16	30	55	●	47-B2-20-16	51,80
25	12/16	30	55	●	47-B2-25-16	51,80
30	16/20	40	70	●	47-B2-30-20	54,60
40	20/25	44	85	●	47-B2-40-25	62,10
50	25/32	55	100	●	47-B2-50-32	84,70
60	25/32	60	125	●	47-B2-60-32	140,40

Typ B3, Radial-Werkzeughalter, überkopf, rechts, kurz
Type B3, radial tool holder, inverted, right-hand, short

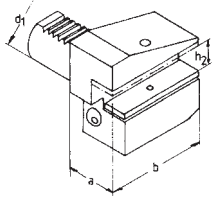


d1 mm	h2 mm	a mm	b mm		Art.-Nr./ Order no	EUR
16	10/12	24	42	●	47-B3-16-12	51,10
20	12/16	30	55	●	47-B3-20-16	51,30
25	12/16	30	55	●	47-B3-25-16	55,10
30	16/20	40	70	●	47-B3-30-20	57,80
40	20/25	44	85	●	47-B3-40-25	66,60
50	25/32	55	100	●	47-B3-50-32	86,70
60	25/32	60	125	●	47-B3-60-32	140,40



VDI-Halter

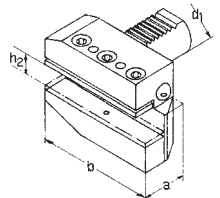
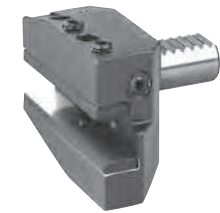
VDI-Tool holders



Typ B4, Radial-Werkzeughalter, überkopf, links, kurz

Type B4, radial tool holder, inverted, left-hand, short

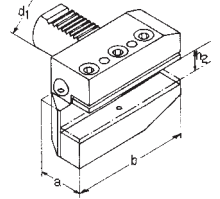
d1 mm	h2 mm	a mm	b mm		Art.-Nr./ Order no	EUR
16	10/12	24	42	●	47-B4-16-12	51,10
20	12/16	30	55	●	47-B4-20-16	52,50
25	12/16	30	55	●	47-B4-25-16	65,80
30	16/20	40	70	●	47-B4-30-20	56,70
40	20/25	44	85	●	47-B4-40-25	68,00
50	25/32	55	100	●	47-B4-50-32	88,10
60	25/32	60	125	●	47-B4-60-32	140,40



Typ B5, Radial-Werkzeughalter, rechts, lang

Type B5, radial tool holder, right-hand, long

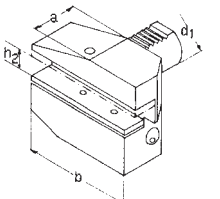
d1 mm	h2 mm	a mm	b mm		Art.-Nr./ Order no	EUR
16	10/12	24	58	●	47-B5-16-12	65,90
20	12/16	30	75	●	47-B5-20-16	68,30
25	12/16	30	75	●	47-B5-25-16	77,00
30	16/20	40	100	●	47-B5-30-20	87,10
40	20/25	44	118	●	47-B5-40-25	100,90
50	25/32	55	130	●	47-B5-50-32	122,70
60	25/32	60	145	●	47-B5-60-32	151,90



Typ B6, Radial-Werkzeughalter, links, lang

Type B6, radial tool holder, left-hand, long

d1 mm	h2 mm	a mm	b mm		Art.-Nr./ Order no	EUR
16	10/12	24	58	●	47-B6-16-12	65,10
20	12/16	30	75	●	47-B6-20-16	70,70
25	12/16	30	75	●	47-B6-25-16	77,50
30	16/20	40	100	●	47-B6-30-20	86,60
40	20/25	44	118	●	47-B6-40-25	100,90
50	25/32	55	130	●	47-B6-50-32	122,70
60	25/32	60	145	●	47-B6-60-32	151,10



Typ B7, Radial-Werkzeughalter, überkopf, rechts, lang

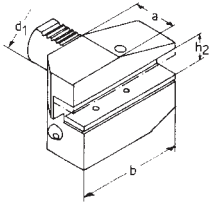
Type B7, radial tool holder, inverted, right-hand, long

d1 mm	h2 mm	a mm	b mm		Art.-Nr./ Order no	EUR
16	10/12	24	58	●	47-B7-16-12	66,00
20	12/16	30	75	●	47-B7-20-16	71,20
25	12/16	30	75	●	47-B7-25-16	76,60
30	16/20	40	100	●	47-B7-30-20	87,10
40	20/25	44	118	●	47-B7-40-25	100,90
50	25/32	55	130	●	47-B7-50-32	122,70
60	25/32	60	145	●	47-B7-60-32	145,70



VDI-Halter

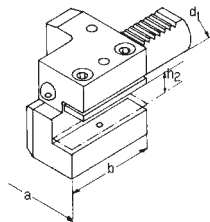
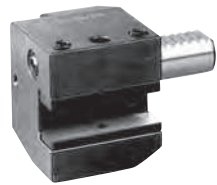
VDI-Tool holders



Typ B8, Radial-Werkzeughalter, überkopf, links, lang

Type B8, radial tool holder, inverted, left-hand, long

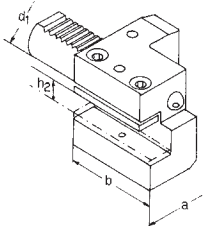
d1 mm	h2 mm	a mm	b mm		Art.-Nr./ Order no	EUR
16	10/12	24	58	●	47-B8-16-12	64,80
20	12/16	30	75	●	47-B8-20-16	70,30
25	12/16	30	75	●	47-B8-25-16	69,10
30	16/20	40	100	●	47-B8-30-20	86,20
40	20/25	44	118	●	47-B8-40-25	100,90
50	25/32	55	130	●	47-B8-50-32	122,70
60	25/32	60	145	●	47-B8-60-32	162,00



Typ C1, Axial-Werkzeughalter, rechts

Type C1, axial tool holder, right-hand

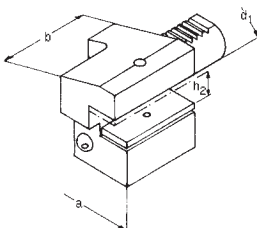
d1 mm	h2 mm	b mm	a mm		Art.-Nr./ Order no	EUR
16	10/12	44	43	●	47-C1-16-12	57,20
20	12/16	50	52	●	47-C1-20-16	60,30
25	12/16	55	58	●	47-C1-25-16	60,30
30	16/20	70	76	●	47-C1-30-20	61,40
40	20/25	85	85	●	47-C1-40-25	76,10
50	25/32	100	100	●	47-C1-50-32	100,00
60	25/32	125	125	●	47-C1-60-32	150,70



Typ C2, Axial-Werkzeughalter, links

Type C2, axial tool holder, left-hand

d1 mm	h2 mm	b mm	a mm		Art.-Nr./ Order no	EUR
16	10/12	44	43	●	47-C2-16-12	57,20
20	12/16	50	52	●	47-C2-20-16	60,30
25	12/16	55	58	●	47-C2-25-16	60,30
30	16/20	70	76	●	47-C2-30-20	61,40
40	20/25	85	85	●	47-C2-40-25	78,20
50	25/32	100	100	●	47-C2-50-32	103,90
60	25/32	125	125	●	47-C2-60-32	150,70



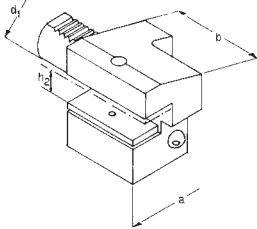
Typ C3, Axial-Werkzeughalter, überkopf, rechts

Type C3, axial tool holder, inverted, right-hand

d1 mm	h2 mm	b mm	a mm		Art.-Nr./ Order no	EUR
16	10/12	44	43	●	47-C3-16-12	57,20
20	12/16	50	52	●	47-C3-20-16	60,30
25	12/16	55	58	●	47-C3-25-16	60,30
30	16/20	70	76	●	47-C3-30-20	61,40
40	20/25	85	85	●	47-C3-40-25	78,20
50	25/32	100	100	●	47-C3-50-32	100,00
60	25/32	125	125	●	47-C3-60-32	150,70



VDI-Halter VDI-Tool holders



Typ C4, Axial-Werkzeughalter, überkopf, links Type C4, axial tool holder, inverted, left-hand

d1 mm	h2 mm	b mm	a mm		Art.-Nr./ Order no	EUR
16	10/12	44	43	●	47-C4-16-12	57,20
20	12/16	50	52	●	47-C4-20-16	60,30
25	12/16	55	58	●	47-C4-25-16	60,30
30	16/20	70	76	●	47-C4-30-20	61,40
40	20/25	85	85	●	47-C4-40-25	76,10
50	25/32	100	100	●	47-C4-50-32	103,90
60	25/32	125	125	●	47-C4-60-32	150,70



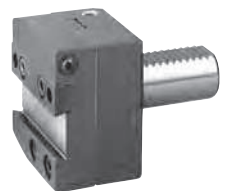
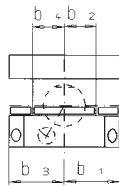
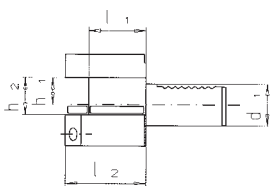
Typ D1, Vierkant-Mehrfach-Aufnahme Type D1, multiple square tool holder

d1 mm	h2 mm	b mm	a mm		Art.-Nr./ Order no	EUR
25	12/16	48	66	●	47-D1-25-16	98,80
30	16/20	60	76	●	47-D1-30-20	103,00
40	20/25	72	90	●	47-D1-40-25	114,40
50	25/32	85	105	●	47-D1-50-32	131,00



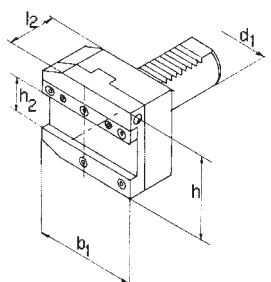
Typ D2, Vierkant-Mehrfach-Aufnahme, überkopf Type D2, multiple square tool holder, inverted

d1 mm	h1/h2 mm	b mm	a mm		Art.-Nr./ Order no	EUR
25	12/16	48	66	●	47-D2-25-16	98,80
30	16/20	60	76	●	47-D2-30-20	103,00
40	20/25	72	90	●	47-D2-40-25	114,40
50	25/32	85	105	●	47-D2-50-32	131,00



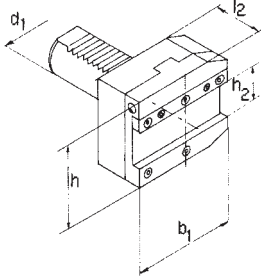
Abstechhalter, rechts Parting off tool holder, right-hand

d1 mm	b1 mm	h mm	l2 mm	h2 mm		Art.-Nr./ Order no	EUR
30	70	70	50	26	●	47-AR-3026	261,40
40	85	78	50	32	●	47-AR-4032	277,60
50	100	80	50	32	●	47-AR-5032	296,80



VDI-Halter

VDI-Tool holders



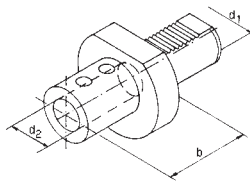
Abstechhalter, links

Parting off tool holder, left-hand

d1 mm	b1 mm	h mm	l2 mm	h2 mm	Art.-Nr./ Order no	EUR
30	70	70	50	26	47-AL-3026	261,40
40	85	78	50	32	47-AL-4032	277,60
50	100	80	50	32	47-AL-5032	296,80

Typ E1, Wendepplatten-Bohrerhalter, IK

Type E1, U-drill holder, IC



d1 mm	d2 mm	b mm	Art.-Nr./ Order no	EUR
20	16	66	47-E1-20-16	59,30
20	20	67	47-E1-20-20	59,30
20	25	71	47-E1-20-25	59,30
25	20	67	47-E1-25-20	59,30
25	25	71	47-E1-25-25	59,30
30	10	66	47-E1-30-10	62,40
30	12	66	47-E1-30-12	62,40
30	16	66	47-E1-30-16	62,40
30	20	67	47-E1-30-20	62,40
30	25	71	47-E1-30-25	62,40
30	32	75	47-E1-30-32	62,40
30	40	90	47-E1-30-40	67,50
40	10	66	47-E1-40-10	66,60
40	12	66	47-E1-40-12	66,60
40	14	66	47-E1-40-14	66,60
40	16	66	47-E1-40-16	66,60
40	20	67	47-E1-40-20	66,60
40	25	75	47-E1-40-25	66,60
40	32	75	47-E1-40-32	66,60
40	40	90	47-E1-40-40	66,60
40	50	100	47-E1-40-50	76,40
50	10	67	47-E1-50-10	83,10
50	12	67	47-E1-50-12	83,10
50	16	67	47-E1-50-16	82,20
50	20	67	47-E1-50-20	82,00
50	25	80	47-E1-50-25	82,20
50	32	80	47-E1-50-32	83,80
50	40	90	47-E1-50-40	87,30
50	50	100	47-E1-50-50	87,30
60	10	80	47-E1-60-10	114,40
60	12	80	47-E1-60-12	114,40
60	16	80	47-E1-60-16	114,40
60	20	80	47-E1-60-20	114,40
60	25	80	47-E1-60-25	114,40
60	32	80	47-E1-60-32	114,40
60	40	90	47-E1-60-40	114,40
60	50	100	47-E1-60-50	117,90

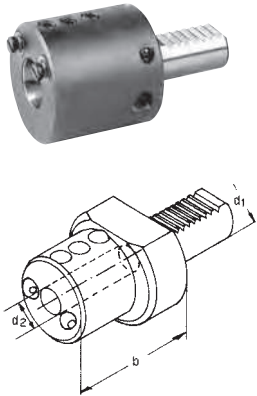
Beliebige Innendurchmesser, Zwischengrößen, Zollmaße etc.
lieferbar auf Anfrage!

Any internal diameter, intermediary bores, inch bores etc.
available upon request!



VDI-Halter

VDI-Tool holders



Typ E2, Bohrstangenhalter, IK/EK Type E2, boring bar holder, IC/EC

d1 mm	d2 mm	b mm		Art.-Nr./ Order no	EUR
16	6	44	●	47-E2-16-06	56,20
16	8	44	●	47-E2-16-08	56,20
16	10	44	●	47-E2-16-10	56,20
16	12	44	●	47-E2-16-12	56,20
16	16	44	●	47-E2-16-16	56,20
20	8	50	●	47-E2-20-08	56,20
20	10	50	●	47-E2-20-10	56,20
20	12	50	●	47-E2-20-12	56,20
20	16	50	●	47-E2-20-16	56,20
20	20	50	●	47-E2-20-20	56,20
20	25	60	●	47-E2-20-25	56,20
25	8	50	●	47-E2-25-08	59,30
25	10	50	●	47-E2-25-10	59,30
25	12	50	●	47-E2-25-12	59,30
25	16	50	●	47-E2-25-16	59,30
25	20	50	●	47-E2-25-20	59,30
25	25	60	●	47-E2-25-25	59,30
30	6	60	●	47-E2-30-06	59,30
30	8	60	●	47-E2-30-08	59,30
30	10	60	●	47-E2-30-10	59,30
30	12	60	●	47-E2-30-12	59,30
30	16	60	●	47-E2-30-16	59,30
30	20	60	●	47-E2-30-20	59,30
30	25	60	●	47-E2-30-25	59,30
30	32	75	●	47-E2-30-32	59,30
40	6	75	●	47-E2-40-06	72,80
40	8	75	●	47-E2-40-08	60,70
40	10	75	●	47-E2-40-10	58,20
40	12	75	●	47-E2-40-12	58,20
40	16	75	●	47-E2-40-16	58,20
40	20	75	●	47-E2-40-20	58,20
40	25	75	●	47-E2-40-25	58,20
40	32	75	●	47-E2-40-32	58,20
40	40	90	●	47-E2-40-40	58,20
40	50	90	●	47-E2-40-50	72,80
50	10	75	●	47-E2-50-10	87,40
50	12	90	●	47-E2-50-12	72,80
50	16	90	●	47-E2-50-16	72,80
50	20	90	●	47-E2-50-20	72,80
50	25	90	●	47-E2-50-25	72,80
50	32	90	●	47-E2-50-32	72,80
50	40	90	●	47-E2-50-40	72,80
50	50	100	●	47-E2-50-50	72,80
60	12	90	●	47-E2-60-12	137,90
60	16	90	●	47-E2-60-16	137,90
60	20	90	●	47-E2-60-20	137,90
60	25	90	●	47-E2-60-25	137,90
60	32	90	●	47-E2-60-32	137,90
60	40	90	●	47-E2-60-40	137,90
60	50	100	●	47-E2-60-50	150,10

**Beliebige Innendurchmesser, Zwischengrößen, Zollmaße etc.
lieferbar auf Anfrage!**
*Any internal diameter, intermediary bores, inch bores etc.
available upon request!*



VDI-Halter

VDI-Tool holders



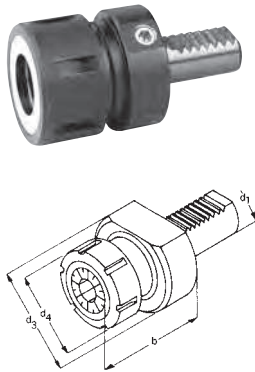
Typ E3, Spannzangenfutter OZ, für Spannzangen DIN 6388

Type E3, collet chucks OZ, for collets DIN 6388

d1 mm	OZ	d3 mm	Spannbereich/ Clamping range	b mm	Art.-Nr./ Order no	EUR
16	415 E	40	2-16	65	● 47-E3-16-16	100,20
20	415 E	50	2-16	57	● 47-E3-20-16	105,70
20	4541 E	50	4-20	62	● 47-E3-20-20	105,70
25	415 E	58	2-16	57	● 47-E3-25-16	117,70
30	462 E	68	2-25	75	● 47-E3-30-25	117,70
40	462 E	83	2-25	75	● 47-E3-40-25	122,40
40	467 E	83	4-32	90	● 47-E3-40-32	122,40
50	462 E	98	2-25	75	● 47-E3-50-25	129,80
50	467 E	98	4-32	90	● 47-E3-50-32	135,20
60	467 E	123	4-32	90	● 47-E3-60-32	151,40

Typ E4, Spannzangenfutter ER, für Spannzangen DIN 6499

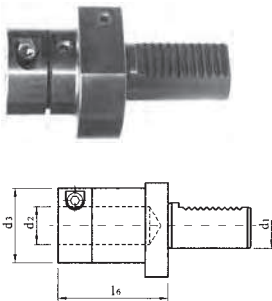
Type E4, collet chucks ER, for collets DIN 6499



d1 mm	ER	d3 mm	Spannbereich/ Clamping range	b mm	Art.-Nr./ Order no	EUR
16	ER 16	40	1-10	40	● 47-E4-16-16	85,70
16	ER 20	40	1-13	44	● 47-E4-16-20	88,40
20	ER 16	50	1-10	40	● 47-E4-20-16	89,40
20	ER 20	50	1-13	44	● 47-E4-20-20	89,40
20	ER 25	50	1-16	54	● 47-E4-20-25	89,40
25	ER 25	58	1-16	57	● 47-E4-25-25	93,00
25	ER 32	58	2-20	62	● 47-E4-25-32	93,00
30	ER 25	68	1-16	70	● 47-E4-30-25	81,60
30	ER 32	68	2-20	62	● 47-E4-30-32	81,60
30	ER 40	68	2-25	70	● 47-E4-30-40	81,60
40	ER 25	83	1-16	70	● 47-E4-40-25	94,00
40	ER 32	83	2-20	84	● 47-E4-40-32	90,30
40	ER 40	83	2-25	75	● 47-E4-40-40	89,00
50	ER 32	98	2-20	84	● 47-E4-50-32	100,80
50	ER 40	98	2-25	90	● 47-E4-50-40	107,10
60	ER 40	123	2-25	75	● 47-E4-60-40	132,30

Typ E2S, Werkzeughalter geschlitzt, schwingungsarm

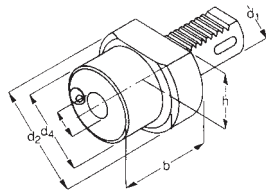
Type E2S, toolholder slotted, reduced vibration



Typ/ Type	d1 mm	d2 mm	d3 mm	l6 mm	Art.-Nr./ Order no	EUR
30 x 6	30	6	30	57	● 47-E2S-30-06	83,20
30 x 8	30	8	30	57	● 47-E2S-30-08	83,20
30 x 10	30	10	36	57	● 47-E2S-30-10	83,20
30 x 12	30	12	36	57	● 47-E2S-30-12	83,20
30 x 16	30	16	40	57	● 47-E2S-30-16	83,20
30 x 20	30	20	44	57	● 47-E2S-30-20	83,20
30 x 25	30	25	49	72	● 47-E2S-30-25	85,30
30 x 32	30	32	56	72	● 47-E2S-30-32	85,30
40 x 10	40	10	36	62	● 47-E2S-40-10	87,40
40 x 12	40	12	36	62	● 47-E2S-40-12	87,40
40 x 16	40	16	40	62	● 47-E2S-40-16	87,40
40 x 20	40	20	44	62	● 47-E2S-40-20	87,40
40 x 25	40	25	49	77	● 47-E2S-40-25	91,50
40 x 32	40	32	56	77	● 47-E2S-40-32	91,50
40 x 40	40	40	64	77	● 47-E2S-40-40	91,50
50 x 20	50	20	44	90	● 47-E2S-50-20	125,80
50 x 25	50	25	49	90	● 47-E2S-50-25	125,80
50 x 32	50	32	56	90	● 47-E2S-50-32	125,80
50 x 40	50	40	64	90	● 47-E2S-50-40	125,80



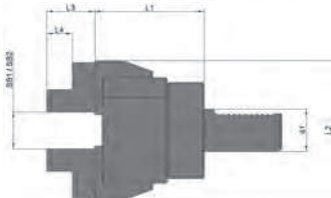
VDI-Halter VDI-Tool holders



Typ F, Morsekegelaufnahme Type F, Morse taper holder

d1 mm	MK/ MT	h mm	d2 mm	b mm	Art.-Nr./ Order no	EUR
20	1	23	50	22	47-F20-1	57,20
20	2	23	50	90	47-F20-2	66,60
25	1	25	58	22	47-F25-1	66,60
25	2	25	58	46	47-F25-2	66,60
30	1	28	68	27	47-F30-1	59,50
30	2	28	68	36	47-F30-2	59,50
30	3	28	68	66	47-F30-3	59,50
40	1	32,5	83	36	47-F40-1	64,30
40	2	32,5	83	36	47-F40-2	64,30
40	3	32,5	83	50	47-F40-3	64,30
40	4	32,5	83	80	47-F40-4	64,30
50	2	35	98	36	47-F50-2	74,90
50	3	35	98	45	47-F50-3	74,90
50	4	35	98	55	47-F50-4	74,90
50	5	35	98	68	47-F50-5	96,50
60	3	42,5	123	36	47-F60-3	99,80
60	4	42,5	123	50	47-F60-4	99,80
60	5	42,5	123	81	47-F60-5	99,80

Stangengreifer Bar puller



Stangengreifer, Typ SGF Bar puller, type SGF

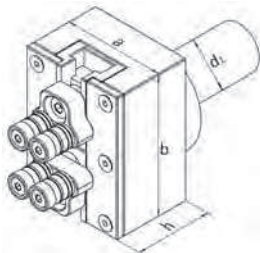
- für zwei Spannbereiche
- mit Wendebacken

- for two clamping ranges
- with reversible clamping jaws

d1 mm	Spannber. 1/ Clamp.range 1	Spannber. 2/ Clamp.range 2	L1 mm	L2 mm	L3 mm	L4 mm	Art.-Nr./ Order no	EUR
20	6-45	45-100	77	99	34	18	47-SGF20	728,40
30	6-45	45-100	77	99	34	18	47-SGF30	788,40
Zyl. 32	6-45	45-100	77	99	34	18	47-SGF32Z	820,50
40	6-56	56-110	79	111	34	18	47-SGF40	857,00
50	6-56	56-110	79	111	34	18	47-SGF50	1.199,70
Satz Ersatzbacken für Stangengreifer / Set of spare jaws for bar puller							47-SGF-B	298,50

Stangengreifer, Typ SG25 Bar puller, type SG25

**NEU
NEW**



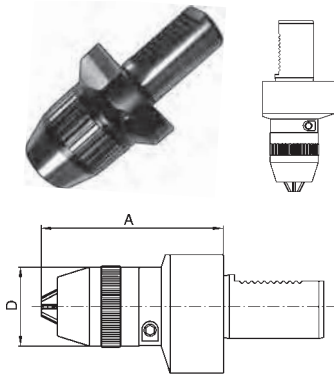
- zylindrische Aufnahme D25 mit Spannfläche
- mit diamantbeschichteten Rollen für sicheren Halt, minimiert das Risiko einer Beschädigung des Rohmaterials
- stufenlose Einstellung auf jeden Durchmesser mit Hilfe der angebrachten Skala
- großer Spannbereich, verstellbar 1-70 mm, schnelle Verstellung des neuen Spannbereichs
- kompaktes Aluminium-Leichtgehäuse, blau eloxiert
- Lieferumfang: Stangengreifer inkl. 1 Paar Spannbacken mit diamantbeschichteten Rollen, 1 Paar feste Standardbacken, Bedienschlüssel

- cylindrical mounting D25 with clamping flat
- with diamond-coated rollers for an excellent grip, minimizing the damage risk for the clamped material
- any diameter is infinitely adjustable by means of a scale
- large clamping range from 1-70 mm, fast resetting of clamping range
- light-weight aluminium body, blue anodized
- scope of delivery: bar puller including 1 pair of jaws with diamond-coated rollers, 1 pair of fixed standard jaws, maintenance and setting tools

d1	Spannbereich / Clamping range	a mm	b mm	h mm	Art.-Nr. / Order no	EUR
25	1-70	55	75	42	47-SG25-70	840,00



Kurzbohrfutter VDI Universal drill chucks VDI



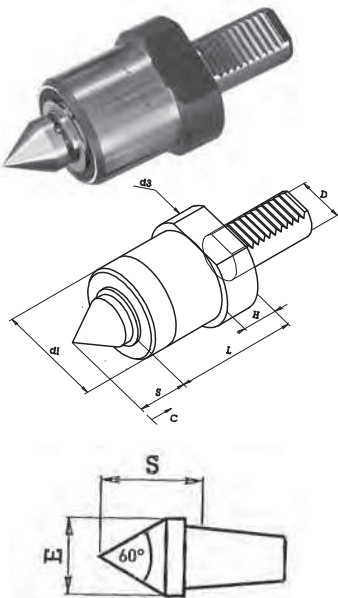
DIN 69880 (VDI), mit Kühlmitteldüsen* DIN 69880 (VDI), with coolant nozzles*

VDI	Spannweite/ Capacity mm	A mm	D mm		Art.-Nr./ Order no	EUR
16**	1-10	41	50	▶	82-341016	312,00
20**	1-10	41	50	▶	82-341020	312,00
30	1-13	87	50	●	82-341330	312,00
30	1-16	92	55	●	82-341630	336,00
40	1-13	88	50	●	82-341340	320,00
40	1-16	93	55	●	82-341640	340,00
50	1-16	101,5	55	▶	82-341650	370,00

* Lieferbar auch mit Innenkühlung / Available also with internal coolant supply

** Spannung durch den Schaft / Clamping through shank

Mitlaufende Zentrierspitze mit VDI-Schaft Revolving tailstock centre with VDI shank



Gefedert Spring-loaded

**NEU
NEW** !

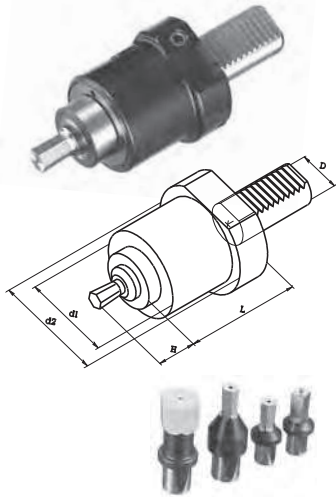
- speziell für den Einsatz auf CNC-Drehmaschinen
- mit auswechselbaren Einsätzen, Lieferung mit 1 Standardeinsatz

- especially for the use on CNC lathes
- with interchangeable inserts, delivered with 1 standard insert

VDI	d1 mm	d3 mm	L mm	H mm	S mm	Federweg/ Travelstroke max.	E mm		Art.-Nr./ Order no	EUR
30	58	68	78	20	34	2,5	28	▶	47-MZ2-30	495,70
40	58	83	80	22	34	2,5	28	▶	47-MZ2-40	512,50

Weitere auswechselbare Einsätze auf Anfrage.
Further interchangeable inserts available upon request.

Räumwerkzeughalter mit VDI-Schaft Broach tool holders with VDI shank



Räumwerkzeughalter Broach tool holder

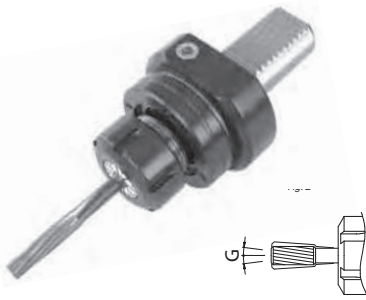
NEU
NEW !

VDI	d1 mm	d2 mm	L mm	H mm	Aufnahme/ Mounting		Art.-Nr./ Order no	EUR
30	58	68	83	25	Ø 12	▶	47-RHV-30-12	348,50
30	58	68	83	40	Ø 16	▶	47-RHV-30-16	361,50
40	58	83	83	25	Ø 12	▶	47-RHV-40-12	387,30
40	58	83	83	40	Ø 16	▶	47-RHV-40-16	387,30

Passende Räumstempel mit Vierkant, Sechskant oder Torx
auf Anfrage lieferbar.

Suitable broaching cutters with square, hexagonal or torx
upon request.

Pendelhalter mit VDI-Schaft Floating chucks with VDI shank

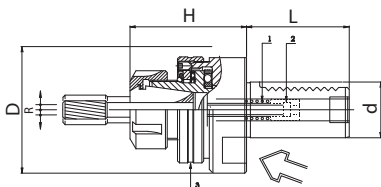


Pendelhalter mit Innenkühlung Floating chucks with internal cooling

NEU
NEW !

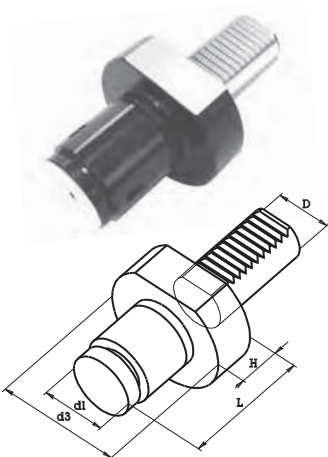
- mit einstellbarem Radialspiel
- Einstellbereiche: Freipendeln und Parallelpendeln
- Federkraft, Zentrierkraft und Freipendeln einstellbar

- with adjustable radial floating
- application: Free and parallel floating
- spring force, centering force and floating adjustable



VDI	Spannzange/ Collet	D mm	H mm	L mm	R max mm	G max mm		Art.-Nr./ Order no	EUR
30	ER 25	68	64	55	1	1,5	▶	47-PH-30-25	347,30
30	ER 32	68	72	55	1,5	1,5	▶	47-PH-30-32	387,30
40	ER 32	83	74	63	1,5	1,5	▶	47-PH-40-32	387,30
40	ER 40	83	74	63	1,5	1,5	▶	47-PH-40-40	477,60

Werkstückanschlag mit VDI-Schaft Work piece stops with VDI shank



Mitlaufender Werkstückanschlag Revolving work piece stop

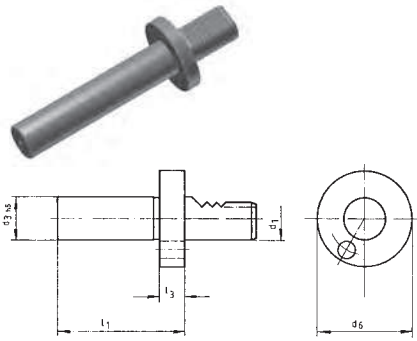
NEU
NEW !

- gefedert

- spring-loaded

VDI	d1 mm	d3 mm	L mm	H mm	Federweg/ Stroke mm		Art.-Nr./ Order no	EUR
20	35	50	58	16	3	▶	47-MW-2035	206,50
20	56	50	58	16	3	▶	47-MW-2056	222,00
30	35	68	70	20	3	▶	47-MW-3035	210,90
30	56	68	70	20	3	▶	47-MW-3056	222,00
40	44	83	78	22	3	▶	47-MW-4044	284,70
40	60	83	78	22	3	▶	47-MW-4060	290,00

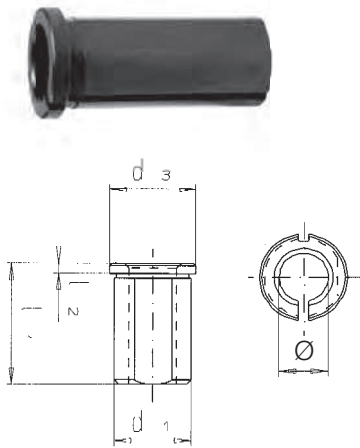
Prüfdorne Test arbors



DIN 69880 DIN 69880

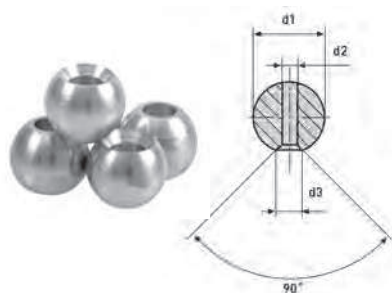
d1 mm	d3 mm	d6 mm	l1 mm	l3 mm		Art.-Nr./ Order no	EUR
16	30	40	120	15	▶	47-PD-16-30	207,90
20	40	50	150	15	▶	47-PD-20-40	226,50
25	40	58	150	15	▶	47-PD-25-40	249,00
30	40	68	200	15	●	47-PD-30-40	244,30
40	40	83	200	15	●	47-PD-40-40	258,30
50	40	98	200	15	●	47-PD-50-40	282,30
60	40	123	200	15	▶	47-PD-60-40	320,30

Zubehör für VDI-Halter Accessories for VDI-tool holders



Reduzierbuchsen RZ, geschlitzt Reduction sleeves RZ, slotted

d1 mm	Ø mm	d3 mm	l1 mm	l2 mm		Art.-Nr./ Order no	EUR
20	8-16	24	50	4	●	47-RZ-20-Ø	23,00
25	8-20	29	50	4	●	47-RZ-25-Ø	24,50
32	8-25	36	60	4	●	47-RZ-32-Ø	26,00
40	10-32	44	75	4	●	47-RZ-40-Ø	29,60
50	20-40	54	75	4	●	47-RZ-50-Ø	39,00
60	25-50	64	75	4	●	47-RZ-60-Ø	76,00



Kugelspritzdüsen Ball spray nozzles

NEU !

7

- Material: Messing

- material: brass

d1 mm	d2 mm	d3 mm	VE/Set		Art.-Nr./ Order no	EUR
8	3,5	5,5	10 Stk. / 10 pcs.	●	47-KD-8	31,80
10	5	7	10 Stk. / 10 pcs.	●	47-KD-10	31,80
14	6	9	10 Stk. / 10 pcs.	●	47-KD-14	31,80

Abgabe nur in VE à 10 Stück, Preis versteht sich für 10 Stück!
Only available in sets of 10 pieces, price refers to 10 pieces!

O-Ringe O-rings

NEU !



Für / For	VE/Set		Art.-Nr./ Order no	EUR
VDI 16	10 Stk. / 10 pcs.	●	47-OR-VDI16	4,50
VDI 20	10 Stk. / 10 pcs.	●	47-OR-VDI20	4,20
VDI 25	10 Stk. / 10 pcs.	●	47-OR-VDI25	6,40
VDI 30	10 Stk. / 10 pcs.	●	47-OR-VDI30	6,40
VDI 40	10 Stk. / 10 pcs.	●	47-OR-VDI40	8,90
VDI 50	10 Stk. / 10 pcs.	●	47-OR-VDI50	8,90
VDI 60	10 Stk. / 10 pcs.	●	47-OR-VDI60	10,50

Abgabe nur in VE à 10 Stück, Preis versteht sich für 10 Stück!
Only available in sets of 10 pieces, price refers to 10 pieces!

Lagerstandard / in stock
innerhalb weniger Tage / within a few days
auf Anfrage / on request



