

vigilantplant.®

The clear path to operational excellence

Excellence in Process Measurement



Preempt bottlenecks
Network ready



Avoid surprises
Advanced diagnostics



Reduce blind spots
Multivariable measurement



Bulletin 00A01A21-31E

vigilantplant.®
The clear path to operational excellence

YOKOGAWA 

Your Single-Source Partner for Operational Excellence

Industry leaders striving for operational excellence will benefit from a new vigilant approach to plant automation.
 Yokogawa VigilantPlant solutions help you to Measure, Control, and Optimize your processes, ensuring plant-wide integration.
 A worldwide network of committed experts supports your operations 24/7 for life-cycle optimization.

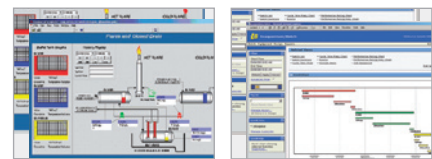
vigilantplant[®]



Optimize

Production Management

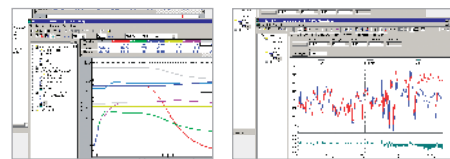
Plant Information Management



Exaquantum

Exaquantum/Batch

Advanced Process Control

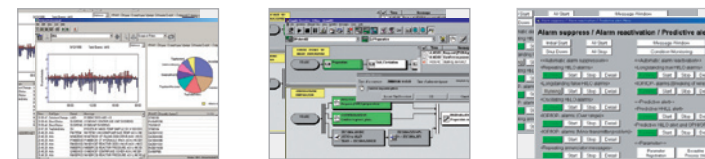


Exasmoc

Exarqe

Asset Management and Operational Efficiency

Operation Efficiency Improvement

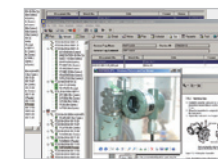


Exaplog

Exapilot

AAASuite

Integrated Plant Asset Management



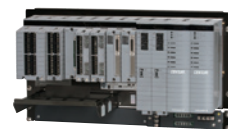
PRM: Plant Resource Manager



Control

Production and Safety Control

Integrated Production Control



CENTUM VP

Integrated Safety Control



ProSafe-RS

SCADA and Hybrid PLC/RTU

FAST/TOOLS



STARDOM

Data Acquisition and Logic Control

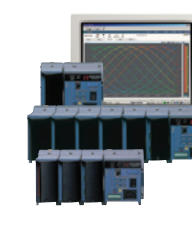
PLC/PAC



Paper and Paperless Recorder



Data Acquisition Equipment



Controller and Conditioner



Measure

Sensing and Actuation

Flow



Multivariable



Pressure



Level



Temperature



Wireless



Valve Products/ Others



Analyzer



Analysis and Quality Control

Technical Partners' Products



Flow



Multivariable



Pressure



Level



Temperature



Valve Products



Valve Products



Valve Products



Field Accessories



Field Accessories

Flow



4-wire Magnetic Flowmeter ADMAG AXF and AXW

Easy maintenance

- Diagnostic function to detect the adhesion level on the electrodes
- Replaceable electrodes structure realizes easy maintenance
- Error messages and diagnostic instructions simplify and optimize maintenance

User-oriented functionality

- Clear and versatile indications
- Infrared switches for parameters setting without opening cover
- Flexible electrical connection direction
- Multiple status alarms

High performance

- Achieves stable measurement of fluids involving high concentration slurries or low conductivity by "Enhanced Dual Frequency Excitation"
- Low conductivity (1 μ S/cm)
- High accuracy (0.35% of rate, 0.2% of rate with option)
- High speed pulse output (up to 10,000 pulses per second)

Expansion of Product Lineup

- Large size magnetic flowmeter for stable water measurement (Up to 1800mm)
- Wide range of liners and electrode materials
- A variety of process connections (incl. sanitary)



2-wire Magnetic Flowmeter ADMAG AXR

- No extra AC power supply
- Power saving (1 to 4% of typical 4-wire magnetic flowmeter)
- Achieves stable measurement, zero stability and quick response times by "Dual Frequency Excitation"
- High accuracy (0.5% of rate)
- Magnetic switches for parameters setting without opening cover
- SIL2 Safety Integrity Level (IEC 61508) certified



Vortex Flowmeter digital YEWFLO

- Universal flowmeter for Liquids, Gas and Steam
- High accuracy ($\pm 0.75\%$ of rate)
- Stable measurement of low flow by "Spectral Signal Processing"
- Many options, such as High Process Temperature Version (450°C), Cryogenic Version (-196°C), Reduced Bore Type, and Stainless Steel Housing



Differential Pressure Transmitter DPharp EJJ/EJA-E Series with Orifice Plate

- A field proven, best-selling differential pressure transmitter series featuring silicon resonant sensor
- ISO-compliant (JIS Z8762) orifice design for measuring various fluids
- The variety of orifice type and materials are available
- Nominal size: 15 to 3,000 mm (0.5 to 120 inches)



Ultrasonic Flowmeter US300 Series Fixed or Portable Type with Clamp-on Transducers

- Quick and easy setup with matched-pair flow calibrated no-zero-offset transducers
- High accuracy realized by our patented digital signal processing technology
- High tolerance against the measurement under air bubbles or entrained solids in the fluid



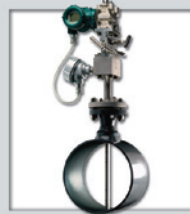
Coriolis Mass Flowmeter ROTAMASS 3 Series

- High accuracy mass flow and density meter SIL2 certified
- Measures (liquid or gas) mass flow, density, concentration and temperature
- Flow ranges between 10.5 g/h up to 600 t/h
- Insensitive to entrained gas up to 50% and more
- High performance, unaffected by pipe stress and/or vibration due to unique box in box design
- Largest wall thickness of measuring tubes in the market
- Seamless Tubes no welding for pressure rates up to 440 bar
- Self draining in vertical installation
- Wide temp. range, -200°C to +350°C with optional insulation



Variable Area Flowmeter ROTAMETER™

- Rugged and durable, all 316SS and glass designs
- Special material, Hastelloy, Monel, Titanium, PTFE Lining
- Easy to install and maintain
- Local indicator, no power required, limit switches
- Patented blocked float indication system
- HART® and Profibus PA communication
- Various hazardous area approvals, SIL2
- High temperature capability: -200°C to +370°C
- High pressure versions up to 700 bar



Averaging Pitot Tube Verabar [Product of Veris, Inc.]

- Verabar senses and averages the natural differential pressure created by the velocity profile
- Verabar measures gas, liquid and steam, and measures volumetric flow with EJA/EJX DP transmitter and mass flow with EJX910A multivariable transmitter
- Improved accuracy and turndown, superior signal stability
- Eliminates clogging of sensor ports
- Lower drag force and increased structural strength
- Lower energy costs



Compact Orifice System ORIFLOW [Product of Bopp & Reuther Messtechnik GmbH]

- Volume or mass flow measurements with EJA and EJX transmitters for gas, steam and liquid
- Modular and proven concept
- No moving parts, extremely rugged and stable
- Easy to install without impulse piping
- Available from 1/2" to 4" (standard), other sizes on request
- Conformance to ISO 5167
- Integrated temperature sensor for mass flow



Manifold and Direct Mounted Manifold [Product of Tyco Valves & Controls LP (Anderson Greenwood Instruments)]

- 3, 5-Valve manifolds for differential pressure and 2-valve in-line manifolds for gauge pressure
- Low profile for the bottom connection available
- Compact design with fewer potential leak points
- Ease of installation and large number of options
- Direct mounted manifolds are connected and supported at the differential pressure taps



Instrument Connection Systems [Product of Cameron International Corporation (TBV)]

- Pre-engineered, pre-tested, pre-fabricated modular instrument installation with EJA and EJX differential pressure and pressure transmitters
- The optimum measurement technology with proven mounting practices (close coupling) and hardware integration
- Eliminate hydrostatic error and reduce installed costs

Multivariable



Vortex Flowmeter digital YEWFLO (Multivariable Type)

- The world's first 2-wire multivariable vortex flowmeter with built in temperature sensor
- Mass flow calculation by temperature correction is available
- High accuracy ($\pm 2.0\%$ of rate)
- Superior measurement of saturated steam



Multivariable Transmitter DPharp EJJ910A

- Multivariable transmitter to measure differential pressure, static pressure and temperature and to calculate dynamically compensated mass flow
- 1.0% mass flow rate accuracy
- Dual output capability; analog 4-20 mA and pulse
- PC-based FSA120 EJJ-MV Configuration DTM supports the configuration for calculating mass flow



Smart HART® Loop Interface and Monitor [Product of Moore Industries-International, Inc.]

- "Break Out" up to three analog signals proportional to a HART® primary, second, third or fourth variables of multivariable transmitters
- High/Low process and loop diagnostic alarms
- Sets up as a primary or secondary master, or in "Listen" mode
- Large, 5-digit display
- Isolated output channels

Indicator.....



Fieldbus Segment Indicator FVX110

- Field indicator for FOUNDATION Fieldbus™ devices
- Switch and display up to 16 indicated values
- 32 lines x 84 columns full dot-matrix LCD with LED backlight
- Easy to scroll display with scroll knob on side of amplifier case
- High visualization with bar graph and scroll bar

Pressure.....



Differential Pressure and Pressure Transmitter DPharp EJA Series

- Ultra-high performance pressure transmitter, the flagship model of DPharp family
- Fast response 90 ms
- Contact output which can be used for pressure alarm (Optional)
- SIL2 certified by TÜV
- Light and compact design fits to direct mount
- Multi-sensing (Differential pressure and Static pressure)
- Multi-functional indicator (optional)



Differential Pressure and Pressure Transmitter DPharp EJA-E Series

- The newest line-up of DPharp pressure transmitter family
- A strong successor of field-proven, best-selling EJA series pressure transmitters
- High accuracy and excellent long term stability slashes maintenance cost
- Easy-to-use compact design
- Fast response expands the variety of application
- SIL2 certified



Rugged Pressure Transmitter [Product of GP-50 Ltd.]

- HART[®] communication, 4-20 mA loop powered
- 0-5 Through 0-100,000 PSI ranges in PSISG, PSIA, Vacuum options with 5:1 ranging
- NEMA 4X 316 SS enclosure
- Factory sealed, conduit seal not required
- FM and CSA approved explosion proof with Class I, II, III, Division I, II, Groups A, B, C, D, E, F & G



Differential Pressure Transmitter with Remote Diaphragm Seal DPharp EJA/EJA-E Series

- Ideal for measuring the levels and densities of corrosive and high temperature fluids
- Small flange size model also available



Level Transmitter DPharp EJA-E/EJA Series

- Flange-mounting, compact differential pressure transmitter
- Direct mounting to a tank
- Small flange size model also available



Remote Seals for Differential Pressure and Gauge Pressure Transmitter [Product of WIKA Alexander Wiegand GmbH & Co. KG]

- Diaphragm seal to combine with EJA and EJA series pressure and differential pressure transmitters
- Intended for corrosive, contaminated, hot or viscous pressure media
- Various process connections, wetted materials and pressure ranges are available

Wireless.....



Field Wireless System (ISA100.11a protocol)

- Pressure Transmitter DPharp EJA B Series
- Temperature Transmitter YTA510
- Multi-Input Temperature Transmitter YTMX580
- Integrated Gateway YFGW710
- Management Station YFGW410
- Media Converter YFGW610
- Access Point YFGW510

Control proof

- Quick update time of 0.5 second for EJA
- Redundant star network for control applications
- AES 128 bit security mechanism by NIST approval

Power proof

- Unique battery housing compartment and battery pack design for devices
- Battery pack design exchangeable in hazardous area and replaceable internal cells

Future proof

- IPv6-based wireless protocol for expandability of existing plant network architecture in the future
- Upper communication : Modbus/TCP&RTU, OPC

Temperature.....



Temperature Transmitter YTA110, YTA310, and YTA 320

- A highly accurate temperature transmitter with BRAIN, HART[®] or FOUNDATION[™] Fieldbus
- Sensor type is selectable from 12 Thermocouples, 6 RTDs, ohms, or DC millivolts
- Dual compartment housing for harsh environments
- Dual input bumpless change over
- Integral indicator provides both a digital readout and percent bargraph
- SIL2 certified by TÜV NORD



Temperature Transmitter YTA50 and YTA70

- A head mount temperature transmitter with HART[®] communication protocol
- Dimension conforming to DIN form B standard
- Sensor type is selectable from 12 Thermocouples, 2 RTDs, ohms, or DC millivolts
- Isolated Input/Output signals



FieldConnex[®] Temperature Multi-Input (Product of Pepperl+Fuchs GmbH)

- 8-channel for T/C, RTD, resistance and millivolt signals via FOUNDATION[™] Fieldbus H1
- For signals in any hazardous area
- Intrinsically safe, FISCO or Entity
- Pre-engineered enclosure solutions, pre-wired, certified, ready for installation
- Wire and sensor diagnostics



Thermocouple and Resistance Temperature Detector CM/CH/CP/CS/CN/RM/RH/RS/RN Series

- The sensor type and measurement range can be set according to the purpose
- Superb reliability and proven track record
- Fully compliant with IEC and JIS
- Variety of mounting hardware available



Industrial Temperature Assemblies [Product of WIKA Instruments Ltd.]

- Pt100 RTD: 3-, 4-wire, single or dual configuration
- Thermocouple: Type J, K, E, T, 2-(dual), 4-(single) wire with single or dual configuration
- Thermowell style: tapered, straight or stepped
- YTA series can be installed onto the industrial assembly or within the termination head
- Unique explosive environment approvals allow transmitters installation on-site

Valve Products.....



Valve Positioner YVP110

- High performance FOUNDATION[™] Fieldbus-enabled digital valve positioner improves valve characteristics and response
- A wealth of functions such as auto-tuning to effectively use the combined valve
- Employs a unique non-contact position sensor to achieve high precision and high reliability
- Available for both single and double acting cylinder
- The ValveNavi utility software greatly facilitates the process of setting up, tuning, and maintaining the YVP110



GE Masoneilan

- Masoneilan provides customers with the highest quality products and services through unmatched creativity and commitment to excellence
- Masoneilan products include process control valves, regulators, actuators, instruments, and associated software solutions
- Products and services are provided globally with manufacturing plants and sales offices located worldwide



FLOWSERVE'S VALTEK CONTROL VALVES

- Flowserve provides the industry's broadest portfolio of rotary and linear control valves for both general service and severe service applications, backed by the industry's largest network of company-owned service and repair centers to provide fast, on-time, and high quality support
- First in the industry with digital technology and predictive diagnostics
- The market leader in engineered-to-order control valve solutions for complex and difficult applications



Metso's Valve products

- Wide range of Neles, Jamesbury and Mapag® control, on/off and ESD valves and valve related services.
- Neles ND9000™ intelligent valve controller for control applications.
- Neles ValvGuard™ for intelligent ESD-valve partial stroke testing applications
- Neles SwitchGuard™ for intelligent high cycle on-off applications
- Available in HART®, FOUNDATION™ Fieldbus and PROFIBUS PA
- On-line diagnostics and predictive maintenance capabilities



SAMSON flow control solutions

- Sliding stem and rotary control valves, actuators, regulators and steam conditioning solutions
- Smart Series 373x positioners and ESD-valve partial stroke testing solutions
- Smart on/off valve controllers with integrated partial stroke testing
- Limit switches, solenoid valves and accessories
- HART®, FOUNDATION™ Fieldbus and PROFIBUS communications
- Integrated On-Line diagnostics for life cycle predictive maintenance and monitoring

Field Accessories



FieldConnex® Compact Power Hub (Product of Pepperl+Fuchs GmbH)

- 8-segment, redundant FOUNDATION™ Fieldbus H1 power supply, also available with 4 segments
- Redundant connectors (ALF111) suit cable no. AKB336
- Redundancy with single-channel integrity for high availability and low-cost spares holding
- Completely engineered, pre-wired cabinet installation
- Advanced physical layer diagnostics for automated commissioning, online monitoring and troubleshooting with expert system support, integrated into PRM



Liquid Analyzer FLXA21

pH/ORP SENCOM Sensor FU20F, SC25F

- 2-wire transmitter
- HART® communication
- Easier calibration and maintenance by FU20F, SC25F digital sensors



pH/ORP/Conductivity/Inductive Conductivity EXA450 Series PH450G / SC450G / ISC450G

- Unique HMI(Human Machine Interface) with menu structure and high resolution graphical display with touch screen
- Process data trending up to 2 weeks
- Interactive display with choice out of 6 languages



Conductivity/Dissolved Oxygen EXA402 Series DC402G / DO402G

- 4-wire converter
- Event logbook in software
- Four configurable contact outputs



FieldConnex® Fieldbus Junction Boxes (Product of Pepperl+Fuchs GmbH)

- Delivered installation including accessories ready with short lead times
- Connections and explosion protection for all hazardous areas. Junction box certified as an unit.
- Intelligent fieldbus: diagnostic-enabled device couplers for superior plant availability
- Segment Protectors® for ensuring continual segment availability even on field device short circuit. Can have contact bounce protection, jabber protection integrated.
- Fieldbarrier® to interface FISCO and Entity FOUNDATION™ Fieldbus field devices mounted in hazardous areas. Measurement of physical layer parameters on each individual spur possible. This includes contact bounce and jabber protection.
- Enclosure leakage sensor and surge protectors with integrated diagnosis connectable.



Near Infrared Spectrometer

NR800 Fourier Transform Near-Infrared Analyzer

- Real-time monitoring of multi-components
- High resolution
- Up to 4 multi-stream channels with no wearing parts
- Stability and Reliability

Others



Optical Fiber Sensing

Distributed Temperature Sensor DTSX200

- Monitoring temperature on Optical Fiber up to 6km
- Measuring Temperature : -200 to +800 deg.C (Depending on Optical Fiber Sensor)
- Easy to integrate in process control system
- Best Outdoor. solution (Wide Operating Temperature: -45 to +65 deg.C) (Compact and Low power consumption: 10W) (Outdoor housing with Solar Panels/Batteries/Wireless communication is applicable)



Gas Chromatograph

GC8000 Process Gas Chromatograph

- High-speed analysis with multi-oven structure
- Improved operation with a large touch panel display
- Broad range of application
- Stability and Reliability
- Highly sensitive TC detector
- Easy operation via Local display or network



FieldMate Versatile Device Management Wizard

- PC-based field device management tool
- Multi-vendor, multi-protocol support BRAIN, FOUNDATION™ Fieldbus H1, HART®, PROFIBUS and ISA100.11a
- Automatic device data acquisition upon connection to a device or a segment (Segment Viewer)
- Easy acquisition and diagnosis of device status (Device Viewer)
- Categorization, sorting and filtering (History)
- Multi-parameter set-up (Parameter Manager)



Tunable Diode Laser Spectroscopy Analyzer

TruePeak TDLS 200

- In situ analysis
- Interference free
- Rapid measurement (As fast as 2 seconds)
- Process pressure up to 2 MPa
- Process temperature up to 1500 °C
- Optical measurement – no sensor contact with process
- Flexible installation options
- Aggressive applications – high particulate, corrosives, and more



Hand-held Terminal for BRAIN Communication BT200

- Easy to use for setting, changing, displaying, and printing out parameters
- A large display (21 characters by 8 lines) eases setup and alteration procedures
- Self-diagnostics function ensures proper operation of the instruments
- Other features include security code protection, low battery voltage alarm, and automatic power-off



Oxygen Analyzer

Direct In Situ Zirconia Oxygen Analyzer ZR402G / ZR22G, S / ZR202G, S

- Long-life and high-reliability Zirconia sensor
- LCD touch-screen for ease of operation
- The integrated type consisted of probe and converter, to reduce wiring, piping, and installation costs
- Explosion-proof approval
- Remote maintenance using HART® communication

Analyzer



Liquid Analyzer FLXA21 pH/ORP/Conductivity/Inductive Conductivity/Dissolved Oxygen

- 2-wire transmitter
- Menu structure and graphical display with touch screen and 12 languages.
- Redundant system configuration is possible with connecting two sensors.
- One or two sensor modules can be installed.
- HART® communication



Oxygen Analyzer Averaging Converter AV550G

- Handles input of up to 8 oxygen detectors
- "Hot swap" of channel cards so the analyzer remains on line while maintenance is performed
- Full color touch screen for ease of operation
- Multiple display modes shows average data, single detector or all detector gas concentrations
- Remote maintenance using HART® or FOUNDATION™ Fieldbus communications



Gas Density Meter GD402/GD40

- Resistant to external vibrations
- Outstanding stability against sudden changes in gas temperature
- The multi-mode self-oscillation circuit minimizes drift caused by oil mist, dust, moisture, etc. sticking to the sensor
- Explosion-proof approval
- Easy to operate and maintain



Infrared Gas Analyzer IR200 / IR400

- Measurement of NO₂, SO₂, CO₂, CO, CH₄ and O₂
- Simultaneous measurement of up to 5 components including O₂
- Maximum range ratio of 1:25
- Modbus interface
- Easy to operate and maintain

PLC/PAC



Leading Edge Controller FA-M3V

- Ultra-fast Processing Speed
- 100,000 steps of ladder program scanned per 1ms and minimum scan time of 100µs
- Postcard-size Controller
- Compact 147(W) × 100(H) × 88(D)mm size handles 192 I/O points
- Universal I/O Range Achievable with One PLC
- Controls up to 8,192 points and contain devices of up to 856K words per system

Paper and Paperless Recorder



SMARTDAC+ GX10/GX20

- Touch Screen
- Up to 30 or 100 universal input channels
- Expands the input channels up to 500 by using GX60 (Large memory type)
- Compliant with FDA 21 CFR Part 11: login function/audit trail/electronic signature function (/AS option)
- Custom display (/CG option)
- LOG scale function (/LG option)
- SSL communication on HTTP/FTP/SMTP protocols



SMARTDAC+ GP10/GP20

- Touch Screen
- Up to 30 or 100 universal input channels
- Expands the input channels up to 500 by using GX60 (Large memory type)
- Compliant with FDA 21 CFR Part 11: login function/audit trail/electronic signature function (/AS option)
- Custom display (/CG option)
- LOG scale function (/LG option)
- SSL communication on HTTP/FTP/SMTP protocols



Paperless Videographic Recorder Daqstation DXAdvanced DX1000/DX2000

- Up to 12 or 48 Universal input channels
- Connects to DAQMASTER MW100 via Modbus/TCP for up to 240 external channels
- Standard-equipped with an Ethernet port
- Sends a variety of informative e-mail messages
- Compliant with FDA 21 CFR Part 11: login function/audit trail/electronic signature function (/AS1 option)
- Touch Screen(DX1000T/DX2000T)



Chart Recorder Intelligent Industrial Recorders µR10000/µR20000

- 100 mm high reliable recorder with 1, 2, 3, 4-pen and 6-dot models (µR10000)
- 180 mm high reliable recorder with 1, 2, 3, 4-pen and 6, 12, 18, 24-dot models (µR20000)
- Large, VFD full dot matrix display (µR10000:101 × 16, µR20000: 181 × 16)
- Displays a variety of screens for site monitoring

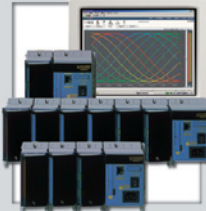
Data Acquisition & Monitoring Software



SMARTDAC+ GA10

- Connects up to 100 of Yokogawa's major data acquisition instruments or controllers
- High speed data acquisition and monitoring on up to 2000 channels
- Simply select a device to connect to and start monitoring
- A wide variety of monitor displays such as trend graphs, numerical values, alarm overviews, meters
- Data supplementing function
- Server OS support

Data Acquisition Equipment



MX100

PC-based Real Time Data Acquisition System

- Acquisition data from up to 1200 channels,300ch/100msec (When using Yokogawa's proprietary software "MXLOGGER")
- High -speed measurement of 24ch/10ms or 60ch/100ms
- Mixed use of three types of measurement intervals is enabled within the system.
- High withstand voltage:3700Vrms for one minute or 600Vrms/VDC continuous.



MW100

Web-enabled Data Acquisition System

- Stand alone type data logger equipment.
- Supports Compact Flash(CF) card for local data storage.
- Continuous data acquisition is possible on 60 channels at 100ms for approximately ten days with a 2-GB card, or for three months on 60 channels at 1s.
- Web server function for remote monitoring.
- Wide operating temperature range: -20 to 60 °C

Controller and Conditioner



Single-loop Process Controller YS1000 Series

- Uses a full dot matrix color TFT-LCD display
- Designed with a lightweight, compact case
- Graphical programming tool with program conversion function from SLC,YS100 for reduction of engineering costs
- Dual CPU and hard manual control as the control output backup function
- Ethernet (Modbus/TCP), Modbus, expansion I/O, and peer-to-peer communication



UTAdvanced Digital Indicating Controllers UT55A/UT52A/UT75A

- Advanced Control
- PID Control — 8 built-in Control Functions / Algorithms
- Ladder Sequence Control
- 2 loop control (UT75A)
- CP calculation (option/cp for UT75A)
- Simplicity
- Bright & Easy to read Active Color LCD Display
- Multiple language support
- Networking
- Ethernet (Modbus / TCP), RS485
- PROFIBUS-DP, DeviceNet, CC-Link
- Reliability
- IP56, 3 year warranty



UTAdvanced Program Controllers UP55A/UP35A

- Max Pattern Number 30(UP55A), 4(UP35A)
- Total Segments Number 300(UP55A), 40(UP35A)
- Advanced Control
- PID Control — 8 built-in Control Functions /Algorithms (Only UP55A)
- Ladder Sequence Control
- Simplicity
- Bright & Easy to read Active Color LCD Display
- Multiple Language support
- Networking
- Ethernet(Modbus/TCP), RS485
- PROFIBUS-DP, DeviceNet, CC-Link
- Reliability
- IP56, 3 year warranty



Compact Signal Conditioner JUXTA VJ Series

- Compact design for space saving
- Universal input to accept either a thermocouple, RTD or mV signal
- Second isolated current or voltage (pulse) output available
- Modbus (RS-485) communication along with analog output signal from a single unit.
- PC-based parameters setting tool available



Solar Tracking Controller - SolStation (TM) HXS10

- Built-in Solar Position Algorithm
- Excellent Environmental Performance
- Flexible, Customizable Program
- Built to Order
- High Quality and Reliable Support

Making critical plant information fully visible is just the beginning of the vigilant cycle

Seeing clearly gives you the knowledge necessary to anticipate the changes required in your process.
Knowing in advance brings you the speed and flexibility to optimize your plant in real time.
And by acting with agility, you are able to adapt to the ups and downs of your business environment.



VigilantPlant excels at bringing out the best in your plant and your people - keeping them fully aware, well informed, and ready to face the next challenge.

vigilantplant.®

The clear path to operational excellence

SEE
CLEARLY

KNOW
IN ADVANCE

ACT
WITH AGILITY

VigilantPlant is Yokogawa's automation concept for safe, reliable, and profitable plant operations. VigilantPlant aims to enable an ongoing state of Operational Excellence where plant personnel are watchful and attentive, well-informed, and ready to take actions that optimize plant and business performance.

YOKOGAWA ELECTRIC CORPORATION

World Headquarters

9-32, Nakacho 2-chome, Musashino-shi, Tokyo 180-8750, Japan
<http://www.yokogawa.com/>

YOKOGAWA CORPORATION OF AMERICA

12530 West Airport Blvd, Sugarland, Texas 77478, USA
<http://www.yokogawa.com/us/>

YOKOGAWA EUROPE B.V.

Euroweg 2, 3825 HD Amersfoort, The Netherlands
<http://www.yokogawa.com/eu/>

YOKOGAWA ENGINEERING ASIA PTE. LTD.

5 Bedok South Road, Singapore 469270, Singapore
<http://www.yokogawa.com/sg/>

YOKOGAWA CHINA CO., LTD.

3F TowerD Cartelo Crocodile Building
No.568 West Tianshan Road, Shanghai 200335, China
<http://www.yokogawa.com/cn/>

YOKOGAWA MIDDLE EAST & AFRICA B.S.C.(c)

P.O. Box 10070, Manama
Building 577, Road 2516, Busaiteen 225, Muharraq, Bahrain
<http://www.yokogawa.com/bh/>

Represented by:

Printed in Japan, 409(KP) [Ed : 11/b]

Trademarks

All brand or product names of Yokogawa Electric Corporation in this bulletin are trademarks or registered trademarks of Yokogawa Electric Corporation. All other company brand or product names in this bulletin are trademarks or registered trademarks of their respective holders.