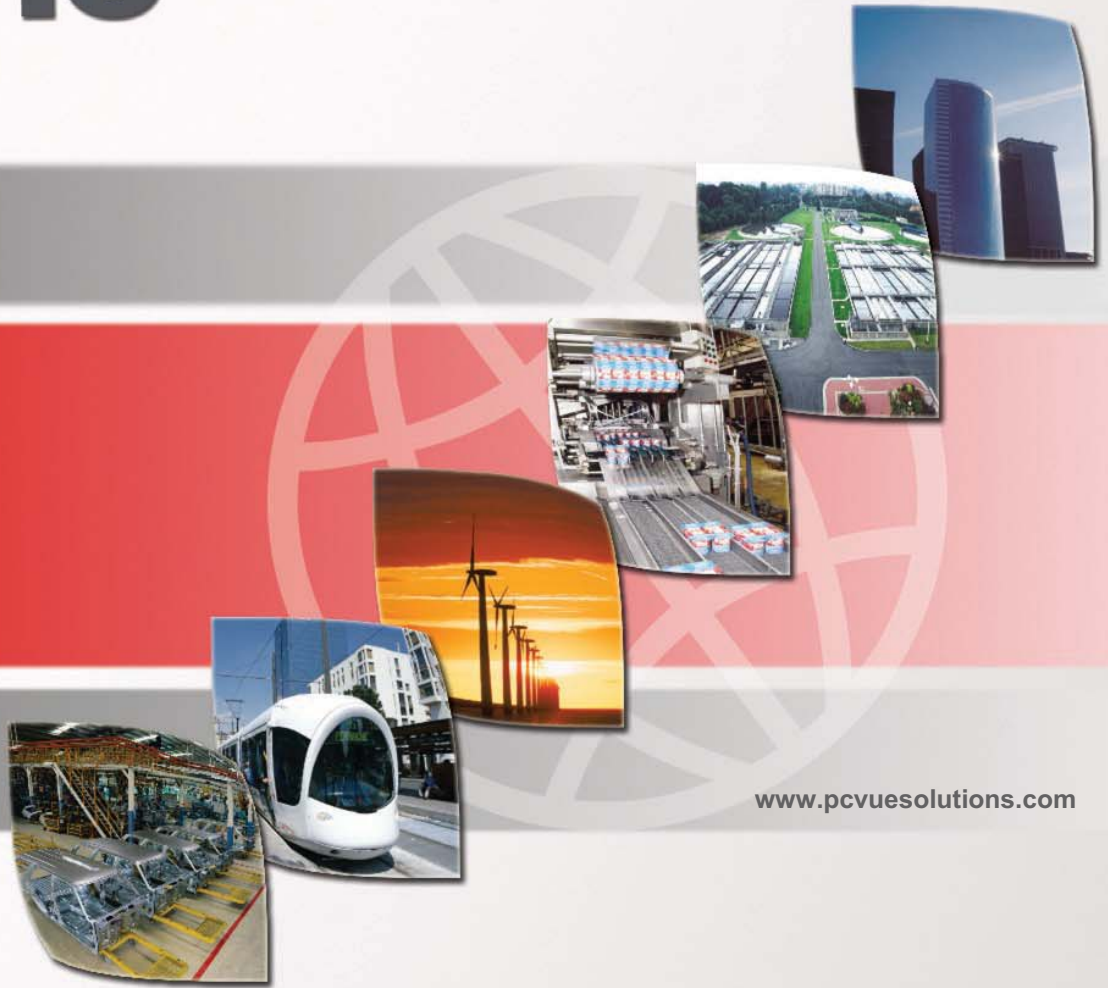


PcVue 10

News Release

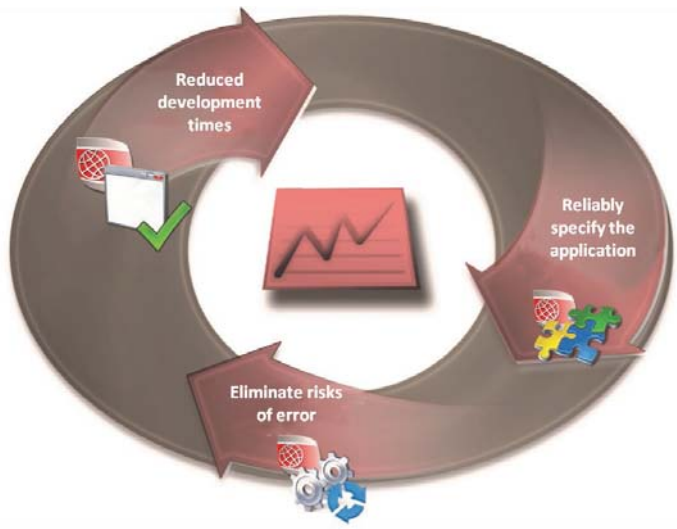


www.pcvuesolutions.com

**New environments
for managing projects
PcVue 10.0**

**Ease of Implementation &
Reduced Development Times**

The new tools of PcVue 10.0, Application Architect and Application Explorer apply to all users from applications developer to infrequent user. They enable you to minimize development effort throughout the life of the application, from design to testing and from maintenance to re-engineering.



- Application Architect** 
- Application Explorer** 
- Smart Generators** 

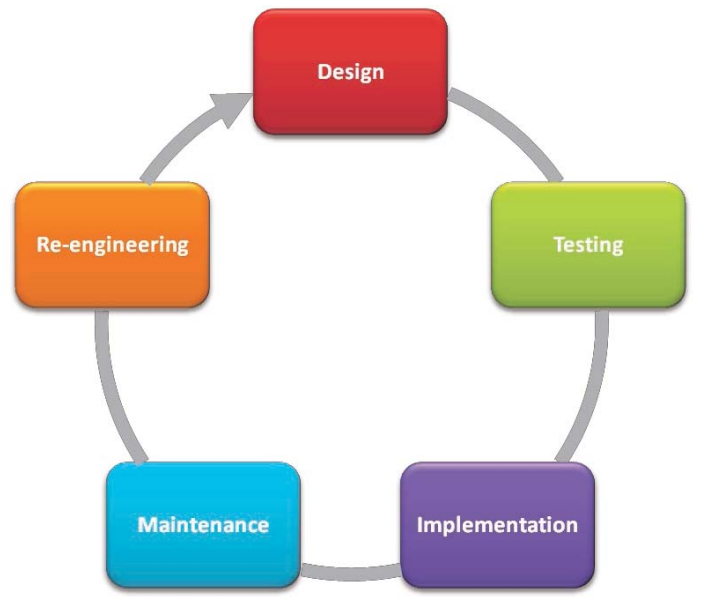


Facilitating implementation throughout the application's life cycle

From now on the total cost of ownership of a supervisory application depends not only on license costs and development time.

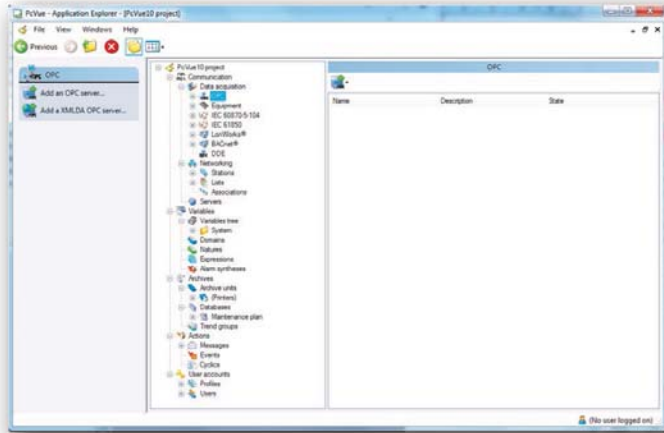
As applications evolve and new functionalities are added, the maintenance costs for development and corrections have to be taken in account.

PcVue 10.0 innovates in this regard by providing effective tools for designing applications quickly. It also includes the tools needed for efficient maintenance of your applications diagnosis, object-oriented modification and software distribution while making both the supervisory application's specification and its run-time behavior robust.





Application Explorer



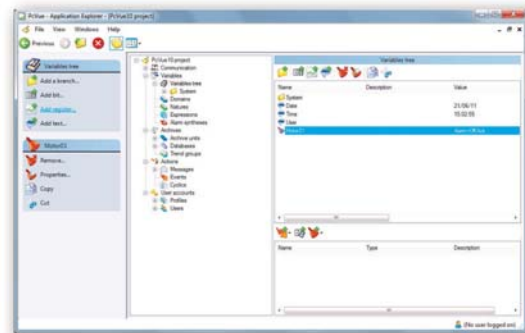
New Environment Modern, Intuitive & Powerful

Delivered for the first time with PcVue 10.0, the Application Explorer includes the functionalities for configuring a supervisory project and completely rejuvenates the controls for doing so.

It is based on the ergonomic rules for systems environments. The new dynamic, intuitive use of configuration boosts PcVue's ease of use.

- ▶ Use of tree structures and lists
- ▶ Multiple Document Interface
- ▶ Copy, Cut & Paste including sub-elements
- ▶ Intuitive navigation: previous & next
- ▶ Various display options: icons, list, details...
- ▶ Standard Windows keyboard shortcuts

An all-new interface to configure the real-time variables tree

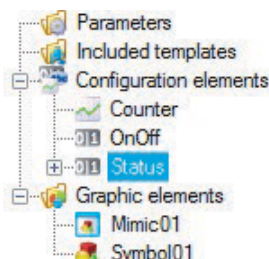


Application Architect

An Environment dedicated to Design & Object Templating

The Application Architect is a new tool that lets you use high-level facilities for templating and reuse of components.

It enables you to create reusable objects to integrate not only graphics, symbols and mimics but also all the frequent configuration elements such as variables, alarms and their associated behaviors: events, archiving, thresholds, commands, scripts etc.



Creation of high-level objects

- ▶ Templates - inheritance and aggregation
- ▶ Settings
- ▶ Topological elements
- ▶ Processes



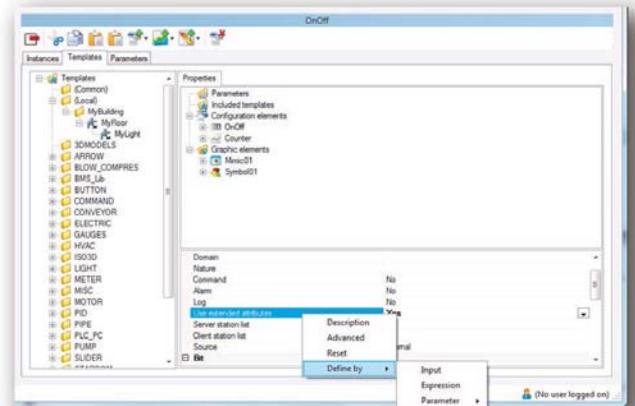
Application Architect

Build your Applications in 4 steps :

Templating, configuration, instantiation, customization

1 - Templating

- ▶ Identify the Inputs/Outputs
- ▶ Define the internal variables needed
- ▶ Identify the behaviors (trending, archiving etc.)
- ▶ Specify the graphical appearance



You can also define higher-level templates by inheritance and/or inclusion.

2 - Configuration

This step lets you identify and specify the differences between the processes of a template in three ways:

- ▶ Manual entry
- ▶ Expression: by calculation
- ▶ Values of preset parameters



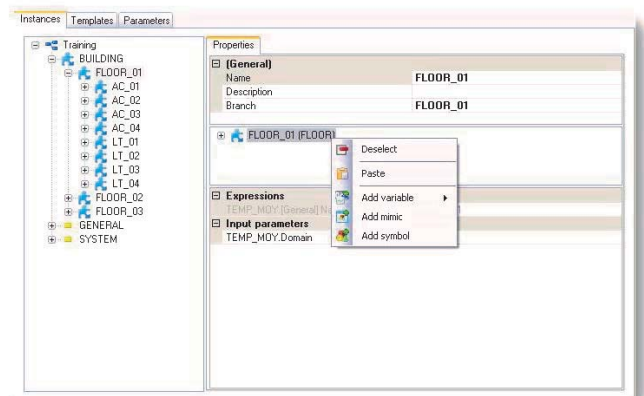
3 - Instantiation

- ▶ Specifying the process structure
- ▶ Representing physical objects as facilities (motor, conveyor, production line, fan, pump, air treatment center, floor etc.)
- ▶ Entering values for particular variables

4 - Customization

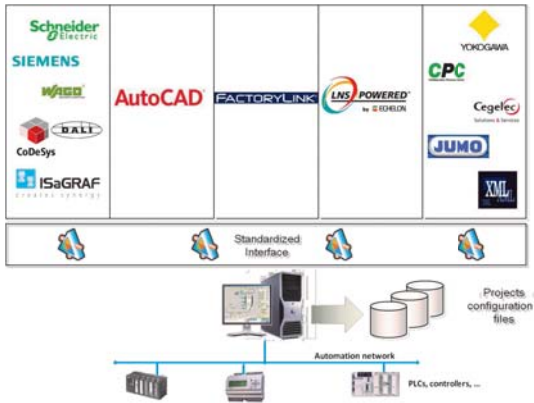
▶ A component may be very similar to another without justifying a supplementary template, so the Application Architect enables you to customize processes to take account of their particular features.

▶ Templating is sometimes not applicable nor useful across the whole application, so the Application Explorer and the Smart Generators can be used together on a project.



Smart Generators

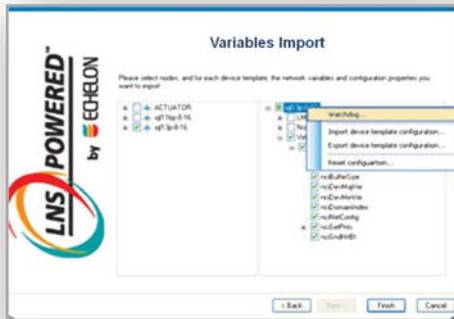
Capitalize on your Configuration Methods with PcVue 10.0's Smart Generators



The Smart Generators enable you to generate an application automatically and to import from external sources. These are improved again with PcVue 10.0 by adding import functionalities for LNS[®], Siemens STEP7[®], Yokogawa[®] Stardom[®] and almost entire FactoryLink[™] projects

Smart Generator Yokogawa[®] STARDOM[®]

The new Smart Generator for Yokogawa[®] STARDOM FCN and FCJ devices.



Smart Generator for LNS[®]

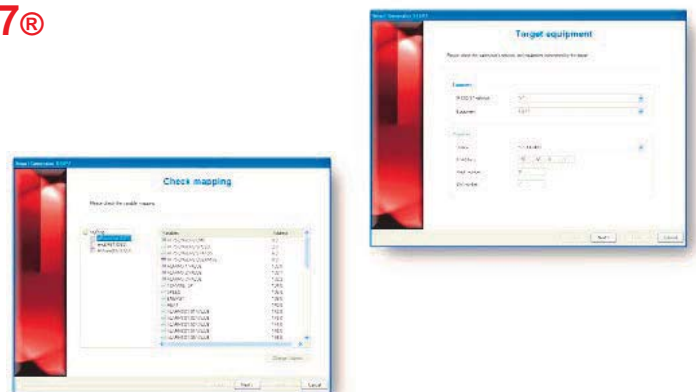
Lets you browse the LNS database and select the variables to be imported. It also automatically synchronizes changes between the LNS[®] database and PcVue.

In this way, the Smart Generator helps to reduce the risk of errors and to capitalize on your configuration methods.

Smart Generator for Siemens STEP 7[®]

Enables you to automate the configuration of PcVue's communication objects and variables derived from the STEP 7[®] project.

You can also automatically synchronize changes in the STEP 7[®] project's database with PcVue.



New communication drivers

Energy & Building

The essential protocols available with PcVue 10.0



Energy management with IEC 61850 & IEC 60870-5-104

PcVue 10.0 is based on the international standards established by the energy sector.

These standards offer high-level functionality (data types, complex exchange mechanisms) and are adopted by most of the main players in the energy sector.

► **IEC 61850:** Native to PcVue 10.0, this standard defines the whole range of objects needed to manage a substation, using their various attributes. The engineering rules are also defined. In particular, the file formats are standardized to ensure interoperability in terms of configuration (configuration data exchange).

The use of a native protocol lets you benefit from all of the information from facilities that adhere to this standard.

► **IEC 60870-5-104:** This protocol is used in the contexts of hydroelectric facilities, electrical substations, building management systems, industrial sites, railways etc. It integrates data and complex services for double commands, encoding for the position of a cut-out switch, short & long pulses and time stamping at source.



Building Management with BACnet®

Version 10.0 of PcVue includes new functionalities for BACnet®:

- **Support of BACnet® Broadcast Management Devices (BBMD):** Gateways for connecting with facilities on sub-networks
- **Support of Foreign Data Tables (FDT):** Address tables to support routing (with interpretation of the BACnet® content)
- **Offline browsing** of EDE formatted files for specifying a configuration of BACnet® facilities

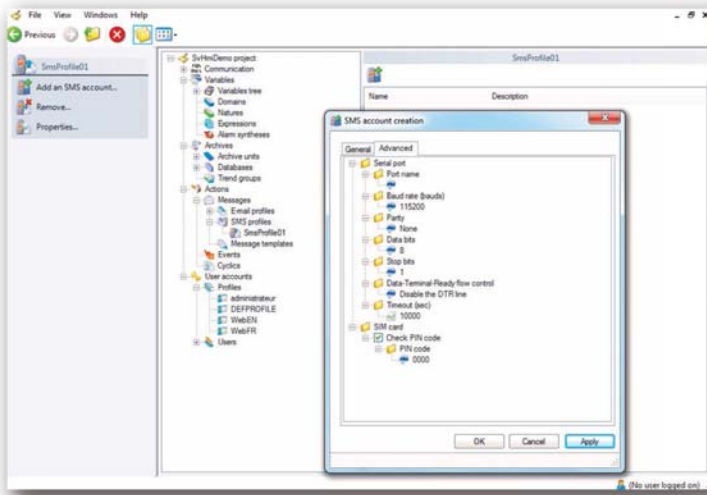
New Ethernet Drivers

- **Moxa:** A protocol for communication with Moxa facilities, based on the Modbus/TCP driver
- **General Electric GE Series 90:** A new client driver SRTP (Secure Real-time Transport Protocol) using Ethernet. It supports communication with GE Series 90 PLCs

Anticipate, Distribute, Manage

Native Integration of texting/SMS

PcVue 10.0 incorporates a basic facility for text messaging (also known as "SMS") to enhance your alert management, transmit process information or just to distribute your alarms.



- ▶ Central configuration of the devices
- ▶ Defining levels of priorities
- ▶ Options to enhance templates of fixed & modifiable parameters for messages, as well as substitute characters to suit the application (for the values of variables at the time a message is composed)
- ▶ Automatic mailing of messages on appearance of an alarm, an event or any other defined action

Graphical Interface

Mimic Controls

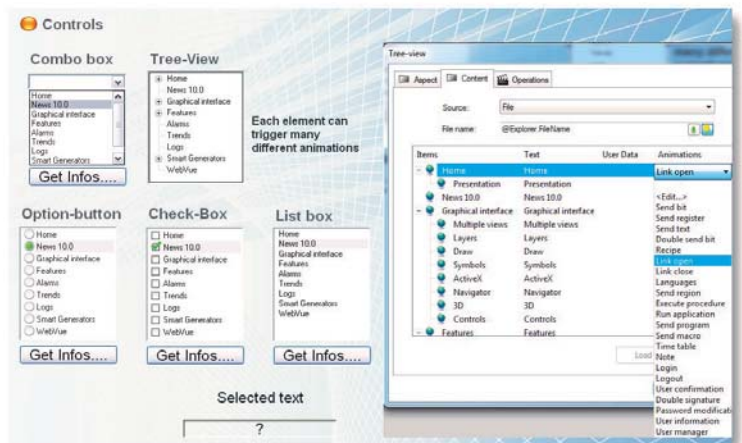
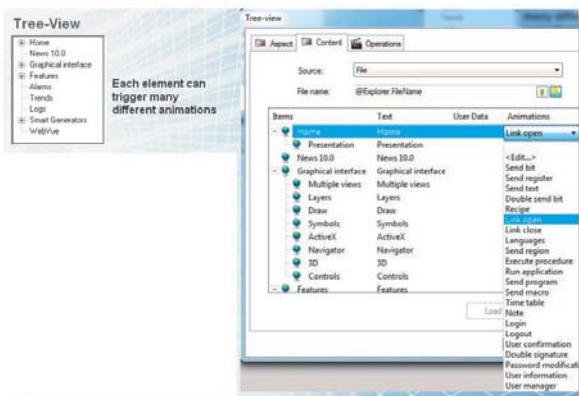
Even simpler

To facilitate navigation in mimics and/or to set up graphical interfaces that meet current standards, PcVue 10.0 includes these new form controls:

- ▶ Check box list
- ▶ Combo box list
- ▶ Scrolling list
- ▶ Option button list
- ▶ Tree view list



The setting up and use of these controls requires no scripting and is compatible with the WebVue light client.



Including the latest technologies

Windows 2008 Server[®], R2

Windows 7[®], VMWare[®]

PcVue 10.0 is compatible with the latest technologies



► **PcVue**

- Development
- Full clients
- Light clients



► **Server**

- Communication servers
- Historical servers
- Web servers
- Project templates



► **Virtualization**

- Client stations
- Light clients, Smartphones, etc.
- Server station

Optimization & Improvements

Historical Data Server New architecture

Version 10.0 of PcVue lets you set up HDS Server architectures with a single active server.

- Multiple redundant HDS servers can perform archiving to a single variables tree, in single writer / multiple readers mode
- A single SQL server is required, which keeps down the costs of installation and maintenance

WebVue Optimized performance and new functionalities

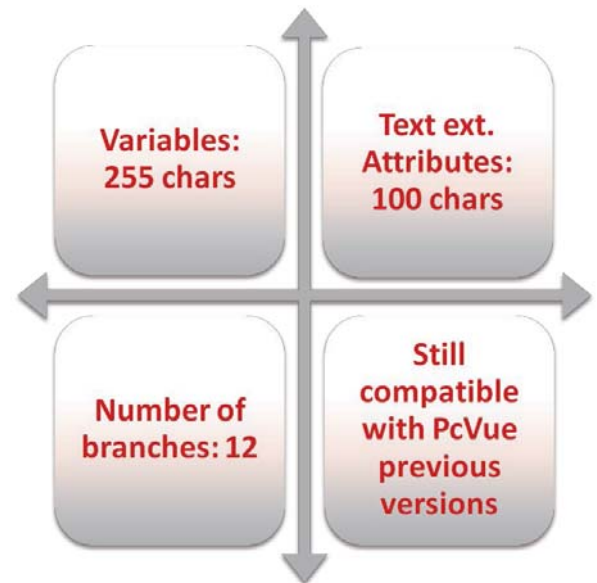
- To optimize access to information and to facilitate running of the application, WebVue offers filtering of data according to user login
- Support of populations in WebVue
- Improvement of WebVue performance through better cache management
- Auto-adaptation of WebVue mimics to the screen resolution of the remote station

Optimization & Improvements

Pushing back the limits of Configuration

PcVue 10.0 lets you take the configuration process farther

- ▶ The structure of the real-time variables tree has up to 12 branches
- ▶ Up to 255 characters for the name of a variable
- ▶ Up to 100 characters for each attribute
- ▶ Compatibility with the projects from previous versions of PcVue



To ensure the longevity of systems through strict processes for compatibility



From the first versions of PcVue in a Windows environment to date, ARC Informatique has continually ensured:

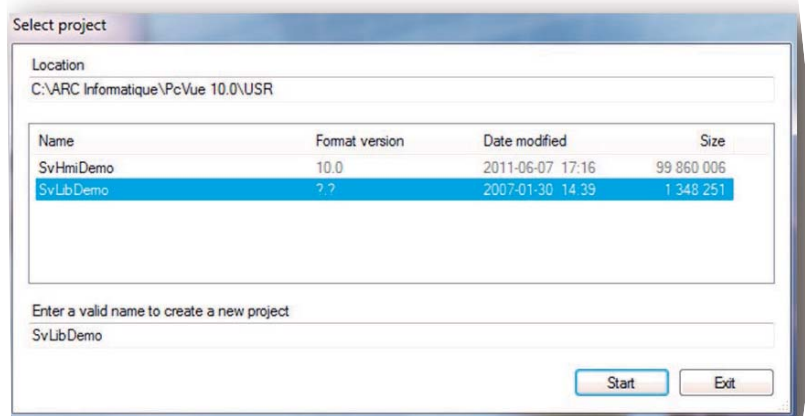
- ▶ Retention of product functionalities
- ▶ Compatibility of newly developed projects with previous versions

While using the version **PcVue 10.0**, you preserve all of your previous investments while benefiting from the latest functionalities and technologies.

Installation & Follow-up of a Version

PcVue 10.0 detects whether the project was developed with a previous version. On startup, it displays a message to confirm this.

- ▶ The dialog box for project selection gives more information, especially the version of the project's format, the most recent revision date and the total size of the project folder.
- ▶ The installation package has been completely redesigned. It is now based on Microsoft® Windows Installer technology. It supports an updating mode for minor updates without de-installation.



Established in 1981, **ARC Informatique** is a private company whose head office is at Sèvres in the Paris area. The company develops and markets industrial software. The software was originally designed for supervision of continuous and manufacturing processes, but now covers the sectors of infrastructure (tunnels, freeways), water (purification stations, potable water distribution), transportation (trams, trains, airports), building management services and also energy (production and distribution). In 2008, **ARC Informatique** launched the **PcVue Solutions** offer that comprises a range of software, hardware and services, bringing an even more closely integrated answer to these markets' needs.



Certified to ISO 9001 and ISO 14001, the company has an international presence via direct sales offices in the USA, Europe and Asia plus a network of distributors as a sales channel. **ARC Informatique** has OEM agree-

ments with Jumo, Veolia Water Division, Quantum Automation, Schneider Electric and Yokogawa that allow these companies to ship versions of the PcVue Solutions offer under their own brands. To date, over **41,000** licenses have been installed worldwide.

FRANCE - Headquarters and Paris office

ARC Informatique
2 avenue de la Cristallerie - 92310 Sèvres - France
tel + 33 1 41 14 36 00 - fax + 33 1 46 23 86 02 -
hotline +33 1 41 14 36 25 - email: arcnews@arcinfo.com
www.pcvuesolutions.com

PcVue Solutions is a suite of software and hardware for display, control, management and data analysis for industrial, building, infrastructure and utilities applications.

PcVue - HMI/SCADA software

WebVue - Web access solution

PlantVue - Stand alone HMI solution

FrontVue - Graphical user interface

Dream Report - Reporting tool

IntraVue - Industrial Ethernet diagnosis software

Alert - Industrial on call management system

Moxa - Industrial Ethernet switches

CHINA PcVue China
Room 1007#
819, Nanjing West Road
ZhongChuang Building
200041, Shanghai
tel + 86 21 5240 0496
fax + 86 21 5240 0456
email: info@pcvue.com.cn

GERMANY PcVue GmbH
Mohnweg 2 A
84079 Bruckberg
tel + 49 8765 938 435
fax + 49 8765 938 480
email: info@pcvue.de

ITALY PcVue Srl
Linate Business Park
Via Rivoltana, 35
20096 Pioletto - Mi
tel + 39 02 9267248
fax + 39 02 92165771
email: info@pcvue.it

JAPAN PcVue Japan
58, Morisue-cho
Nagoya Nakamura-ku
453-0052
tel + 81 90 2349 7701
email: sales@pcvue.jp

MALAYSIA PcVue Sdn Bhd
Unit 311, block B, Phileo
Damansara No. 9 Jln 16/11
46350 Petaling Jaya
Selangor
tel + 60 3 7957 5187
fax + 60 3 7958 8760
email: pcvuesea@pacific.net.sg
hotline: + 60 3 7957 5187

SINGAPORE PcVue Sea
371 Beach Road
#02-12 Keypoint
Singapore 199597
tel + 65 6396 9186
fax + 65 6296 0943
email: c.vilenstein@arcinfo.com

SWITZERLAND PcVue GmbH
Harzachstrasse 2b
8404 Wintherthur
tel + 41 52 682 19 38
fax + 41 52 682 19 58
email: info@pcvue.ch

UK PcVue Solutions Ltd
Regal Chambers
49/51 Bancroft, Hitchin
Hertfordshire, SG5 1LL
tel + 44 1 462 45 77 00
fax + 44 1 462 45 33 77
email: uk@arcinfo.com

USA PcVue Inc
10 Tower Office Park
Suite # 204
Woburn, MA 01801
tel + 1 781 569 0646
fax + 1 781 569 6105
email: pcvueinc@arcinfo.com

DISTRIBUTORS/RESELLERS: Argentina, Australia, Benelux, Brazil, Canada, China, Finland, Greece, India, Indonesia, Kuwait, Latvia, Lithuania, Malaysia, Morocco, Pakistan, Poland, Portugal, Russia, South Africa, Spain, Syria, Taiwan, Thailand, Tunisia, Turkey, Ukraine, United Arab Emirates, Venezuela etc.

All marks or names of products mentioned in this document are the property of their respective owners.

ARC Informatique - Headquarters and Paris office
2 avenue de la Cristallerie - 92310 Sèvres - France
tel + 33 1 41 14 36 00 - fax + 33 1 46 23 86 02
email: arcnews@arcinfo.com
www.pcvuesolutions.com